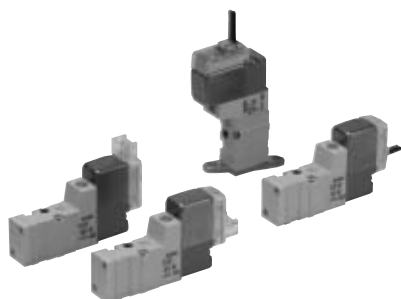
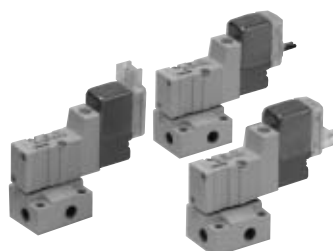


# 3 Port Pilot Operated Solenoid Valve Rubber Seal Series SYJ300



Body ported



Base mounted

## Specifications

Fluid		Air
Operating pressure range MPa	Internal pilot	0.15 to 0.7
Ambient and fluid temperature (°C)		-10 to 50 (No freezing. Refer to page 4-18-4.)
Response time ms (at 0.5 MPa) <sup>Note 1)</sup>		15 or less
Max. operating frequency (Hz)		10
Manual override (Manual operation)		Non-locking push type, push-turn locking slotted type, push-turn locking lever type
Pilot exhaust method		Individual exhaust for the pilot valve, common exhaust for the pilot and main valve
Lubrication		Not required
Mounting orientation		Unrestricted
Shock/Vibration resistance (m/s <sup>2</sup> ) <sup>Note 2)</sup>		150/30
Enclosure		Dustproof (* M8 connector conforms to IP65.)



\* Based on IEC529

Note 1) Based on dynamic performance test, JIS B 8374-1981. (Coil temperature: 20°C, at rated voltage, without surge voltage suppressor.)

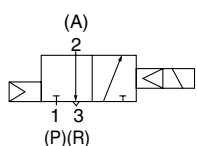
Note 2) Impact resistance: No malfunction occurred when it is tested with a drop tester in the axial direction and at the right angles to the main valve and armature in both energized and de-energized states every once for each condition. (Value in the initial state)

Vibration resistance: No malfunction occurred in one sweep test between 45 and 2000 Hz. Test was performed to axis and right angle directions of the main valve and armature when pilot signal is ON and OFF. (Value in the initial state)

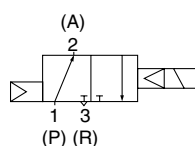
## JIS Symbol

Internal pilot

SYJ31 $\frac{2}{4}$

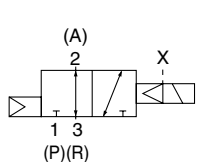


SYJ32 $\frac{2}{4}$

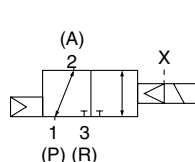


External pilot

SYJ31 $\frac{2}{4}$ R



SYJ32 $\frac{2}{4}$ R



## Solenoid Specifications

Electrical entry		Grommet (G), (H), L plug connector (L), M plug connector (M), M8 connector (W)	
Coil rated voltage (V)	DC	24, 12, 6, 5, 3	
	AC 50/60 Hz	100, 110, 200, 220	
Allowable voltage fluctuation		±10% of rated voltage	
Power consumption (W)	DC	Standard	0.35 (With indicator light: 0.4)
		With power saving circuit	0.1 (With indicator light only)
Apparent power (VA)	AC	100 V	1.4 (With indicator light: 1.5)
		110 V [115 V]	1.6 (With indicator light: 1.7) [1.7 (With indicator light: 1.8)]
		200 V	2.3 (With indicator light: 2.4)
		220 V [230 V]	2.5 (With indicator light: 2.6) [2.7 (With indicator light: 2.8)]
Surge voltage suppressor		Diode (varistor when non-polar types)	
Indicator light		LED	



\* In common between 110 VAC and 115 VAC, and between 220 VAC and 230 VAC.

\* For 115 VAC and 230 VAC, the allowable voltage is -15% to +5% of rated voltage.




**Made to Order Specifications**

(For details, refer to pages 4-4-54 to 55.)

# 3 Port Pilot Operated Solenoid Valve Rubber Seal Series SYJ300

## Flow Characteristics/Weight

Valve model		Type of actuation	Port size	Flow characteristics						Effective area (mm <sup>2</sup> )	Weight (g) <sup>Note)</sup>		
				1 → 2 (P → A)			2 → 3 (A → R)				Grommet	L/M plug connector	M8 connector
				C [dm <sup>3</sup> /(s bar)]	b	Cv	C [dm <sup>3</sup> /(s bar)]	b	Cv				
Body ported	<b>SYJ312</b>	N.C.	M3 x 0.5	—	—	—	—	—	—	0.9	32	33	37
	<b>SYJ322</b>	N.O.		—	—	—	—	—	—				
Base mounted (with sub-plate)	<b>SYJ314</b>	N.C.	M5 x 0.8	0.41	0.18	0.086	0.35	0.33	0.086	—	53 (32)	54 (33)	58 (37)
	<b>SYJ324</b>	N.O.		0.36	0.31	0.089	0.36	0.31	0.089				

 Note) Value for DC. Add 1 g for AC. ( ): Without sub-plate.

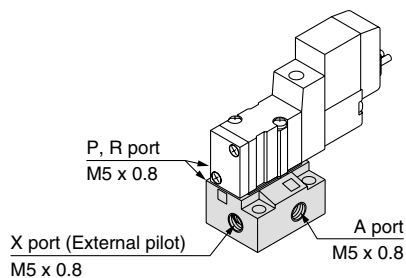
## External Pilot

### SYJ300R

Pilot valve pressure is supplied separately from the main valve pressure through the use of a separate supply port. It can be used in the vacuum (up to -100 kPa) or low pressure line with 0.15 MPa or less.

### Specifications

Applicable model	Base mounted (SYJ314R, SYJ324R)	
Operating pressure range MPa	Main pressure	-100 kPa to 0.7
	External pilot pressure	0.15 to 0.7



Note 1) For manifold base, refer to page 4-4-10.

Note 2) External pilot type body ported valves (SYJ3□2R) can only be used on the manifold.

V100

SY

**SYJ**

VK

VZ

VT

VP

VG

VP

S070

VQ

VKF

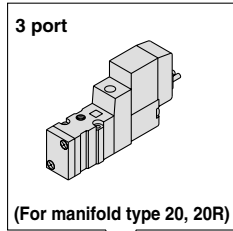
VQZ

VZ

VS

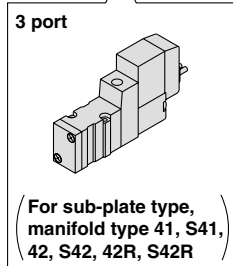
VFN

## How to Order

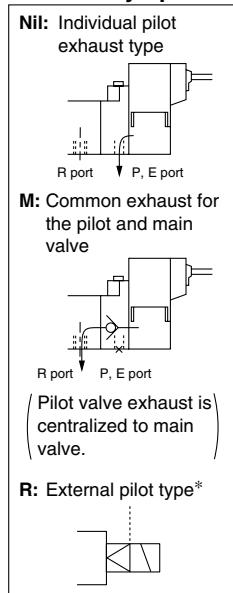


**Body ported** SYJ3 1 2 □ □ 5 M □ □ M3 □

**Base mounted** SYJ3 1 4 □ □ 5 M □ □ □ □



### Body option



\* SYJ3□2R is only for manifold use.

### Type of actuation

1	Normally closed
2	Normally open

### Rated voltage

DC	
5	24 VDC
6	12 VDC
V	6 VDC
S	5 VDC
R	3 VDC

AC (50/60 Hz)	
1	100 VAC
2	200 VAC
3	110 VAC [115 VAC]
4	220 VAC [230 VAC]

\* For type "W□", DC voltage is only available.

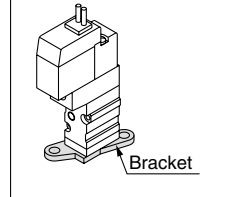
### Light/Surge voltage suppressor

Nil	Without light/surge voltage suppressor
S	With surge voltage suppressor
Z	With light/surge voltage suppressor
R	With surge voltage suppressor (Non-polar type)
U	With light/surge voltage suppressor (Non-polar type)

\* For AC voltage valves there is no "S" option. It is already built-in to the rectifier circuit.  
\* For type R, U, DC voltage is only available.  
\* Power saving circuit is only available in the "Z" type.

### Bracket

Nil: Without bracket  
F: With bracket



\* Bracket is mounted.  
\* External pilot type is not available.

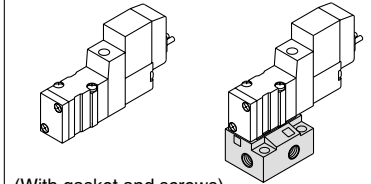
### Coil specifications

Nil	Standard
T	With power saving circuit (24, 12 VDC only)

\* Power saving circuit is not available in the case of "W□" type.

### Port size

Nil: Without sub-plate M5: M5 port With sub-plate



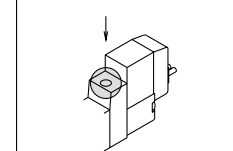
### Electrical entry

24, 12, 6, 5, 3 VDC/100, 110, 200, 220 VAC				24, 12, 6, 5, 3 VDC	
Grommet	L plug connector	M plug connector		M8 connector	
<b>G:</b> Lead wire length 300 mm	<b>L:</b> With lead wire (Length 300 mm)	<b>M:</b> With lead wire (Length 300 mm)	<b>MN:</b> Without lead wire	<b>WO:</b> Without connector cable	
<b>H:</b> Lead wire length 600 mm	<b>LN:</b> Without lead wire	<b>LO:</b> Without connector	<b>MO:</b> Without connector		

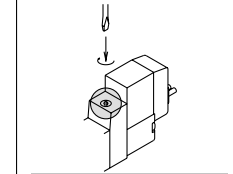
\* "LN," "MN" type: with 2 sockets.  
\* For connector cable of M8 connector, refer to page 4-4-60.

### Manual override

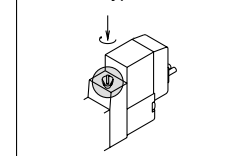
Nil: Non-locking push type



**D:** Push-turn locking slotted type



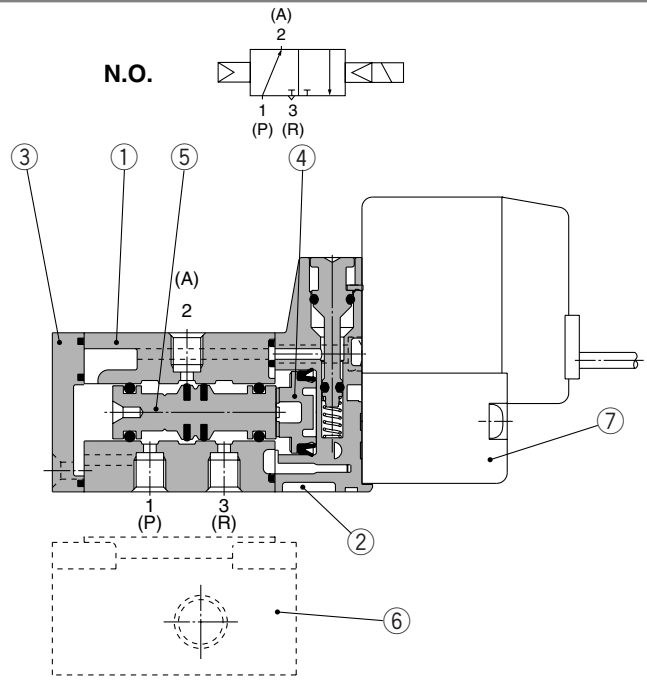
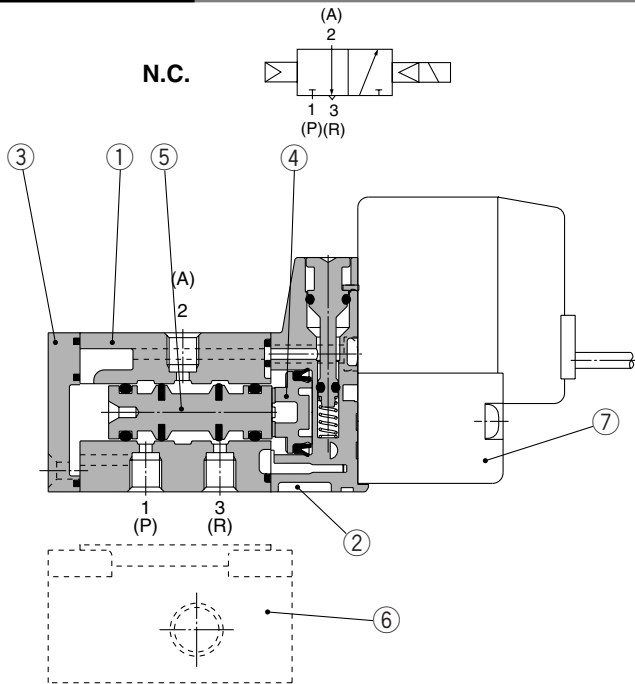
**E:** Push-turn locking lever type



Note) When placing an order for body ported solenoid valve as a single unit, mounting bolt for manifold and gasket are not attached. Order them separately, if necessary. (For details, refer to page 4-4-11.)

# 3 Port Pilot Operated Solenoid Valve Rubber Seal Series SYJ300

## Construction



### Component Parts

No.	Description	Material	Note
①	Body	Zinc die-casted	White
②	Piston plate	Resin	White
③	End cover	Resin	White
④	Piston	Resin	—
⑤	Spool valve assembly	Aluminum, HNBR	—

### Replacement Parts

No.	Description	Part no.	Note
⑥	Sub-plate	SYJ300-9-1	Zinc die-casted
⑦	Pilot valve	V111(T)-□□□□	

## How to Order Pilot Valve Assembly

V111 □ — 5 G □

### Coil specifications

Nil	Standard: DC specifications
A	Standard: AC specifications
T	With power saving circuit (24, 12 VDC only)

\* Power saving circuit is not available in the case of "W□" type.

### Rated voltage

5	24 VDC
6	12 VDC
V	6 VDC
S	5 VDC
R	3 VDC
1	100 VAC 50/60 Hz
2	200 VAC 50/60 Hz
3	110 VAC 50/60 Hz [115 VAC 50/60 Hz]
4	220 VAC 50/60 Hz [230 VAC 50/60 Hz]

\* For type "W□", DC voltage is only available.

### Electrical entry

G	Grommet, 300 mm lead wire	
H	Grommet, 600 mm lead wire	
L	L plug connector	With lead wire
LN	L plug connector	Without lead wire
LO	L plug connector	Without connector
M	M plug connector	With lead wire
MN	M plug connector	Without lead wire
MO	M plug connector	Without connector
WO	M8 connector	Without connector cable

\* For connector cable of M8 connector, refer to page 4-4-60.

### Light/Surge voltage suppressor

Nil	Without light/surge voltage suppressor
S	With surge voltage suppressor
Z	With light/surge voltage suppressor
R	With surge voltage suppressor (Non-polar type)
U	With light/surge voltage suppressor (Non-polar type)

\* For AC voltage valves there is no "S" option. It is already built-in to the rectifier circuit.  
\* For "R" and "U", DC voltage is only available.  
\* Power saving circuit is only available in the "Z" type.

## How to Order Connector Assembly for L/M Plug Connector

For DC: SY100-30-4A-□

For 100 VAC: SY100-30-1A-□

For 200 VAC: SY100-30-2A-□

For other voltages of AC: SY100-30-3A-□

Without lead wire:  
(with connector and 2 of sockets only) SY100-30-A

### Lead wire length

Nil	300 mm
6	600 mm
10	1000 mm
15	1500 mm
20	2000 mm
25	2500 mm
30	3000 mm
50	5000 mm

## How to Order M8 Connector Cable

V100-49-1-□

### Cable length

1	300 mm
2	500 mm
3	1000 mm
4	2000 mm
7	5000 mm

V100

SY

SYJ

VK

VZ

VT

VP

VG

VP

S070

VQ

VKF

VQZ

VZ

VS

VFN

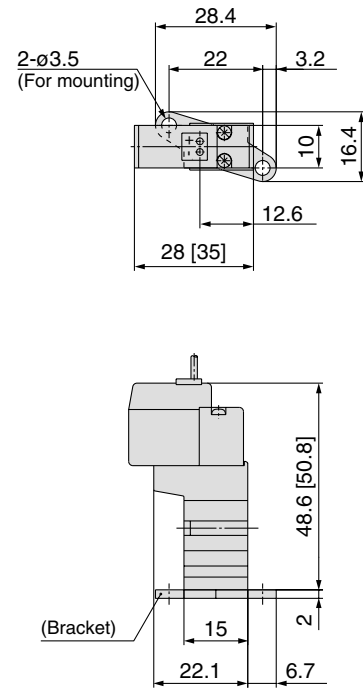
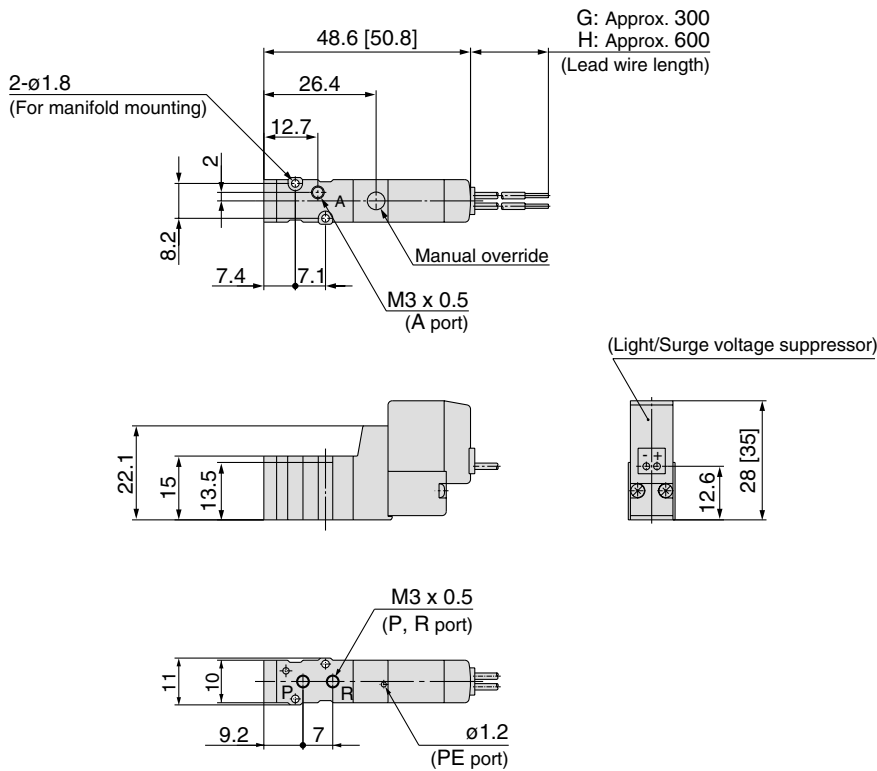
# Series SYJ300

## Body Ported



Grommet (G), (H): SYJ3□2-□<sup>G</sup>□□-M3

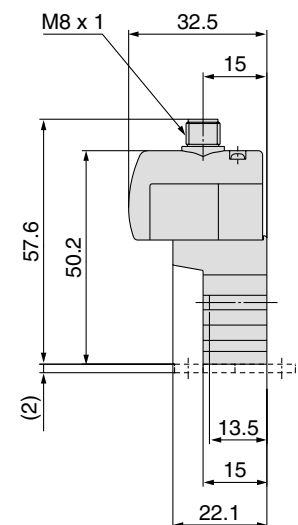
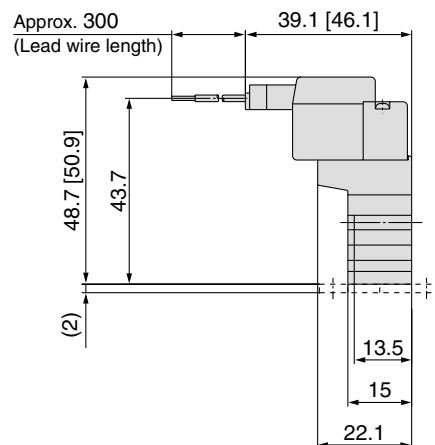
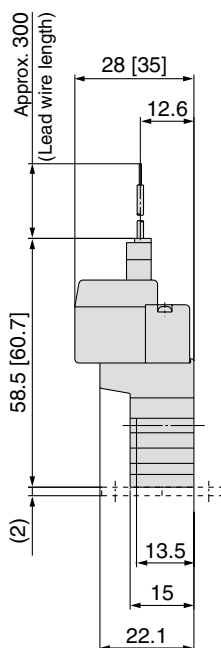
With bracket:  
SYJ3□2-□<sup>G</sup>□□-M3-F



L plug connector (L):  
SYJ3□2-□L□□-M3

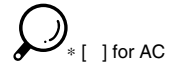
M plug connector (M):  
SYJ3□2-□M□□-M3

M8 connector (WO):  
SYJ3□2-□WO□□-M3



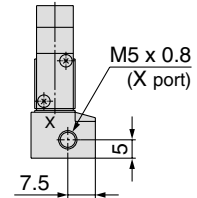
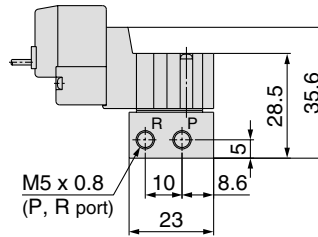
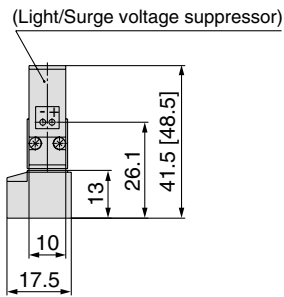
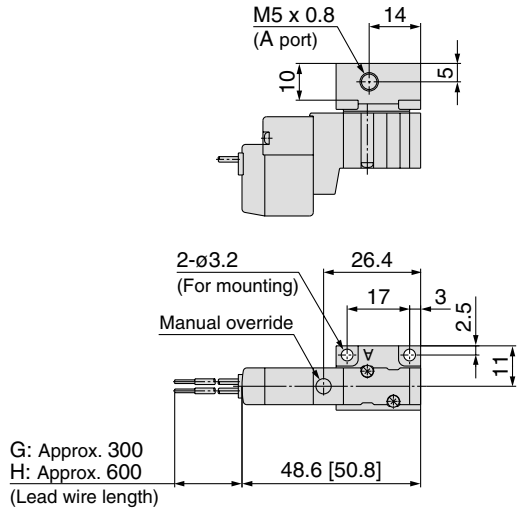
\* Refer to page 4-4-61 for dimensions with connector cable.

# 3 Port Pilot Operated Solenoid Valve Rubber Seal Series SYJ300



## Base Mounted (With sub-plate)

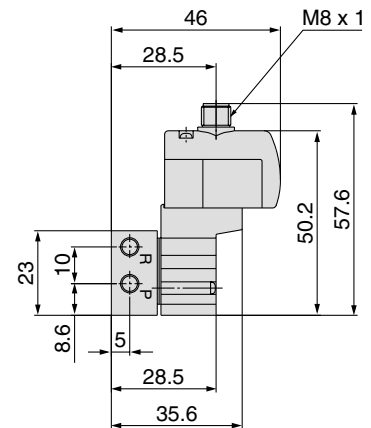
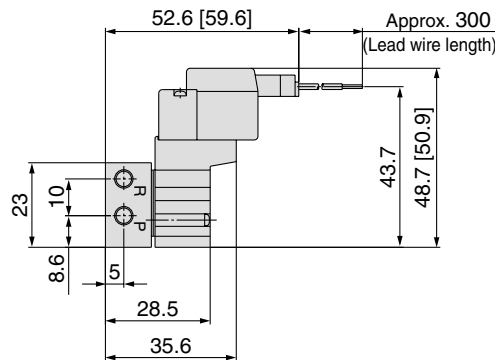
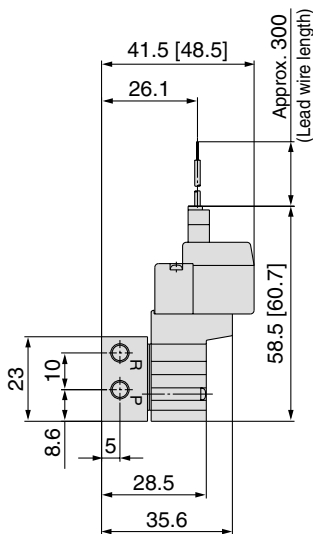
Grommet (G), (H): SYJ3□4-□□□□-M5



L plug connector (L):  
SYJ3□4-□L□□-M5

M plug connector (M):  
SYJ3□4-□M□□-M5

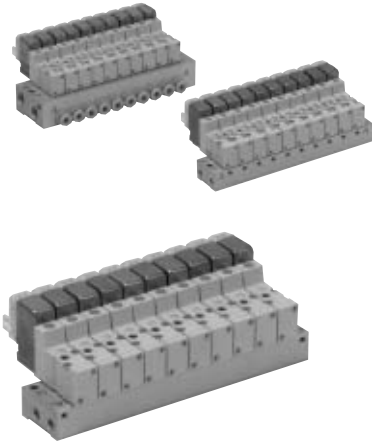
M8 connector (WO):  
SYJ3□4-□WO□□-M5



\* Refer to page 4-4-61 for dimensions with connector cable.

- V100
- SY
- SYJ**
- VK
- VZ
- VT
- VP
- VG
- VP
- S070
- VQ
- VKF
- VQZ
- VZ
- VS
- VFN

# Series SYJ300 Manifold Specifications



## Manifold Specifications

Model	For internal pilot	Type 20	Type 41, S41	Type 42, S42
	For external pilot	Type 20R	—	Type 42R, S42R
Manifold type	Single base/B mount			
P (SUP), R (EXH)	Common SUP/Common EXH			
Valve stations	2 to 20 stations			
A port Porting specifications	Location	Valve	Base	
	Direction	Top	Side	
Port size	P, R port	M5 x 0.8 1/8	M5 x 0.8	1/8
		A port	M3 x 0.5	M3 x 0.5
	X port <sup>Note)</sup>	M5 x 0.8	—	M5 x 0.8

Note) Only for external pilot

## Flow Characteristics

Manifold			Port size		Flow characteristics						Effective area (mm <sup>2</sup> )
					1 → 2 (P → A)			2 → 3 (A → R)			
1(P), 3(R) Port	2(A) Port	C [dm <sup>3</sup> /(s bar)]	b	Cv	C [dm <sup>3</sup> /(s bar)]	b	Cv				
Body ported for internal pilot	Type SS3YJ3-20 SYJ3□2	M5 x 0.8	M3 x 0.5	—	—	—	—	—	—	—	0.9
Base mounted for internal pilot	Type SS3YJ3-41 S41 SYJ3□4	M5 x 0.8	M3 x 0.5	—	—	—	—	—	—	—	1.5
	Type SS3YJ3-42-M5 SYJ3□4	1/8	M5 x 0.8	0.31	0.17	0.075	0.32	0.11	0.072	—	—
	Type SS3YJ3-42-C4 SYJ3□4	1/8	C4	0.33	0.36	0.086	0.33	0.2	0.082	—	—
	Type SS3YJ3-S42-M5 SYJ3□4	1/8	M5 x 0.8	0.32	0.3	0.079	0.33	0.35	0.086	—	—
Base mounted for external pilot	Type SS3YJ3-S42-C4 SYJ3□4	1/8	C4	0.35	0.17	0.082	0.35	0.26	0.086	—	—
	Type SS3YJ3-20R SYJ3□2R	1/8	M3 x 0.5	—	—	—	—	—	—	—	0.9
Body ported for external pilot	Type SS3YJ3-42R-M5 SYJ3□4R	1/8	M5 x 0.8	0.31	0.17	0.075	0.32	0.11	0.072	—	—
	Type SS3YJ3-42R-C4 SYJ3□4R	1/8	C4	0.33	0.36	0.086	0.33	0.20	0.082	—	—
	Type SS3YJ3-S42R-M5 SYJ3□4R	1/8	M5 x 0.8	0.32	0.30	0.079	0.33	0.35	0.086	—	—
	Type SS3YJ3-S42R-C4 SYJ3□4R	1/8	C4	0.35	0.17	0.082	0.35	0.26	0.086	—	—

Note) Value at manifold base mounted, 2 position single acting

## How to Order Manifold (Example)

Instruct by specifying the valves and blanking plate assembly to be mounted on the manifold along with the manifold base model no.

Example:

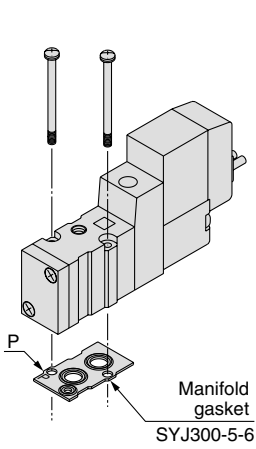
- SS3YJ3-20-03.....1 set (Manifold base)
- SS3YJ3-42R-03-C4 .....1 set (Manifold base)
- \* SYJ312-5LZ-M3.....2 sets (Valve)
- \* SYJ314R-5G.....2 sets (Valve)
- \* SYJ300-10-1A.....1 set (Blanking plate assembly)
- \* SYJ300-10-2A.....1 set (Blanking plate assembly)

↳ The asterisk denotes the symbol for assembly. Prefix it to the part nos. of the solenoid valve, etc.

# 3 Port Pilot Operated Solenoid Valve Rubber Seal Series SYJ300

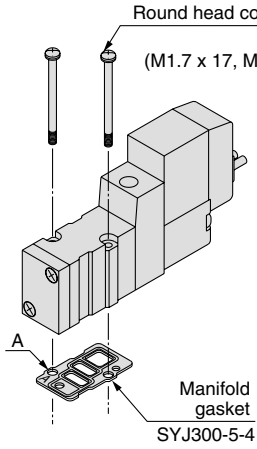
## Combinations of Solenoid Valve, Manifold Gasket and Manifold Base

### Body ported (Type SYJ3□2(R))



**Applicable base**  
SS3YJ3-20 | Manifold  
SS3YJ3-20R | base

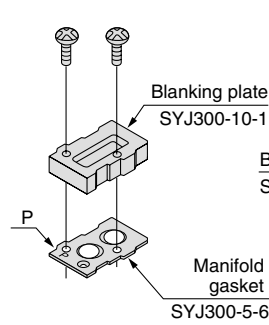
### Base mounted (Type SYJ3□4(R))



**Applicable base**  
**Sub-plate**  
SS3YJ3-41  
SS3YJ3-S41  
SS3YJ3-42  
SS3YJ3-S42  
SS3YJ3-42R  
SS3YJ3-S42R } Manifold  
base

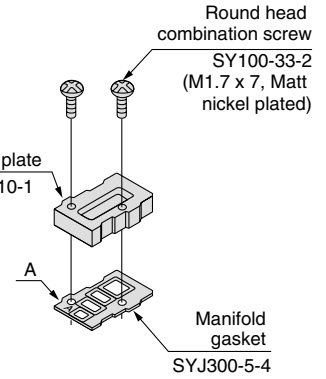
## Blanking Plate Assembly

### Part no.: SYJ300-10-1A



**Applicable base**  
SS3YJ3-20 | Manifold  
SS3YJ3-20R | base

### Part no.: SYJ300-10-2A



**Applicable base**  
**Sub-plate**  
SS3YJ3-41  
SS3YJ3-S41  
SS3YJ3-42  
SS3YJ3-S42  
SS3YJ3-42R  
SS3YJ3-S42R } Manifold  
base

### ⚠ Caution

#### Mounting Screw Tightening Torques

M1.7: 0.12 N·m

Use caution to the assembly orientation for solenoid valves, gasket, and optional parts.

V100

SY

**SYJ**

VK

VZ

VT

VP

VG

VP

S070

VQ

VKF

VQZ

VZ

VS

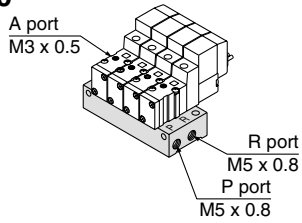
VFN



# Series SYJ300

## Manifold for Internal Pilot Type

### Type 20



#### How to Order

SS3YJ3-20-05-□

Stations	
02	2 stations
:	:
20	20 stations

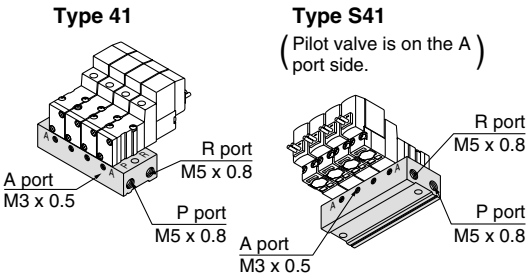
Bracket	
Nil	Without bracket
F	With bracket

**Applicable solenoid valve**  
 SYJ312-□□□□-M3  
 SYJ312M-□□□□-M3  
 SYJ322-□□□□-M3  
 SYJ322M-□□□□-M3

**Applicable blanking plate assembly**  
 SYJ300-10-1A

Note) For more than 10 stations, supply air to both sides of P port and exhaust air from both sides of R port.

### Type 41



#### How to Order

SS3YJ3-□41-05-M3

Valve mounting direction	
Nil	Pilot valve is opposite the A port side.
S	Pilot valve is on the A port side.

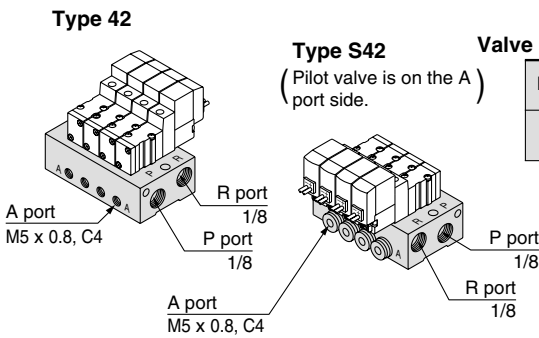
Stations	
02	2 stations
:	:
20	20 stations

**Applicable solenoid valve**  
 SYJ314-□□□□  
 SYJ314M-□□□□  
 SYJ324-□□□□  
 SYJ324M-□□□□

**Applicable blanking plate assembly**  
 SYJ300-10-2A

Note) For more than 10 stations, supply air to both sides of P port and exhaust air from both sides of R port.

### Type 42



#### How to Order

SS3YJ3-□42-05-M5-□

Valve mounting direction	
Nil	Pilot valve is opposite the A port side.
S	Pilot valve is on the A port side.

Stations	
02	2 stations
:	:
20	20 stations

A port size	
M5	M5 x 0.8
C4	ø4 One-touch fitting
N3	ø5/32" One-touch fitting

**Applicable solenoid valve**  
 SYJ314-□□□□  
 SYJ314M-□□□□  
 SYJ324-□□□□  
 SYJ324M-□□□□

**Applicable blanking plate assembly**  
 SYJ300-10-2A

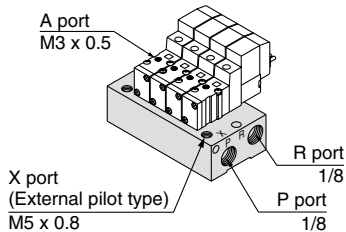
P, R port thread type	
Nil	Rc
F	G
N	NPT
T	NPTF

Note) For more than 8 stations, supply/exhaust air to/from both sides of P port and R port.

## Manifold for External Pilot Type

Pilot valve pressure is supplied separately from the main valve pressure through the use of a separate supply port. It can be used in the vacuum (up to -100 kPa) or low pressure line with 0.15 MPa or less.

### Type 20R



#### How to Order

SS3YJ3-20R-05-□

Stations	
02	2 stations
:	:
20	20 stations

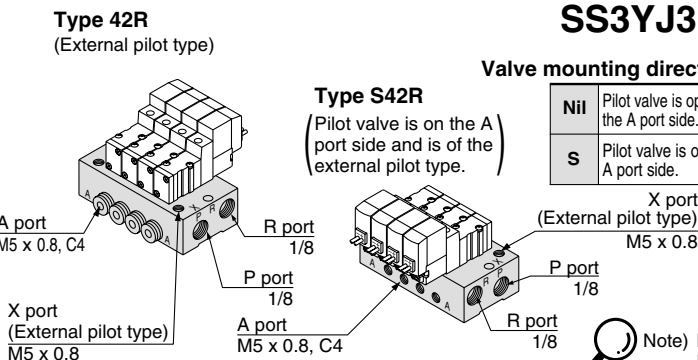
P, R port thread type	
Nil	Rc
00F	G
00N	NPT
00T	NPTF

**Applicable solenoid valve**  
 SYJ312R-□□□□  
 SYJ322R-□□□□

**Applicable blanking plate assembly**  
 SYJ300-10-1A

Note) For more than 10 stations, supply/exhaust air to/from both sides of P port and R port.

### Type 42R



#### How to Order

SS3YJ3-□42R-05-M5-□

Valve mounting direction	
Nil	Pilot valve is opposite the A port side.
S	Pilot valve is on the A port side.

Stations	
02	2 stations
:	:
20	20 stations

A port size	
M5	M5 x 0.8
C4	ø4 One-touch fitting
N3	ø5/32" One-touch fitting

**Applicable solenoid valve**  
 SYJ314R-□□□□  
 SYJ324R-□□□□

**Applicable blanking plate assembly**  
 SYJ300-10-2A

P, R port thread type	
Nil	Rc
F	G
N	NPT
T	NPTF

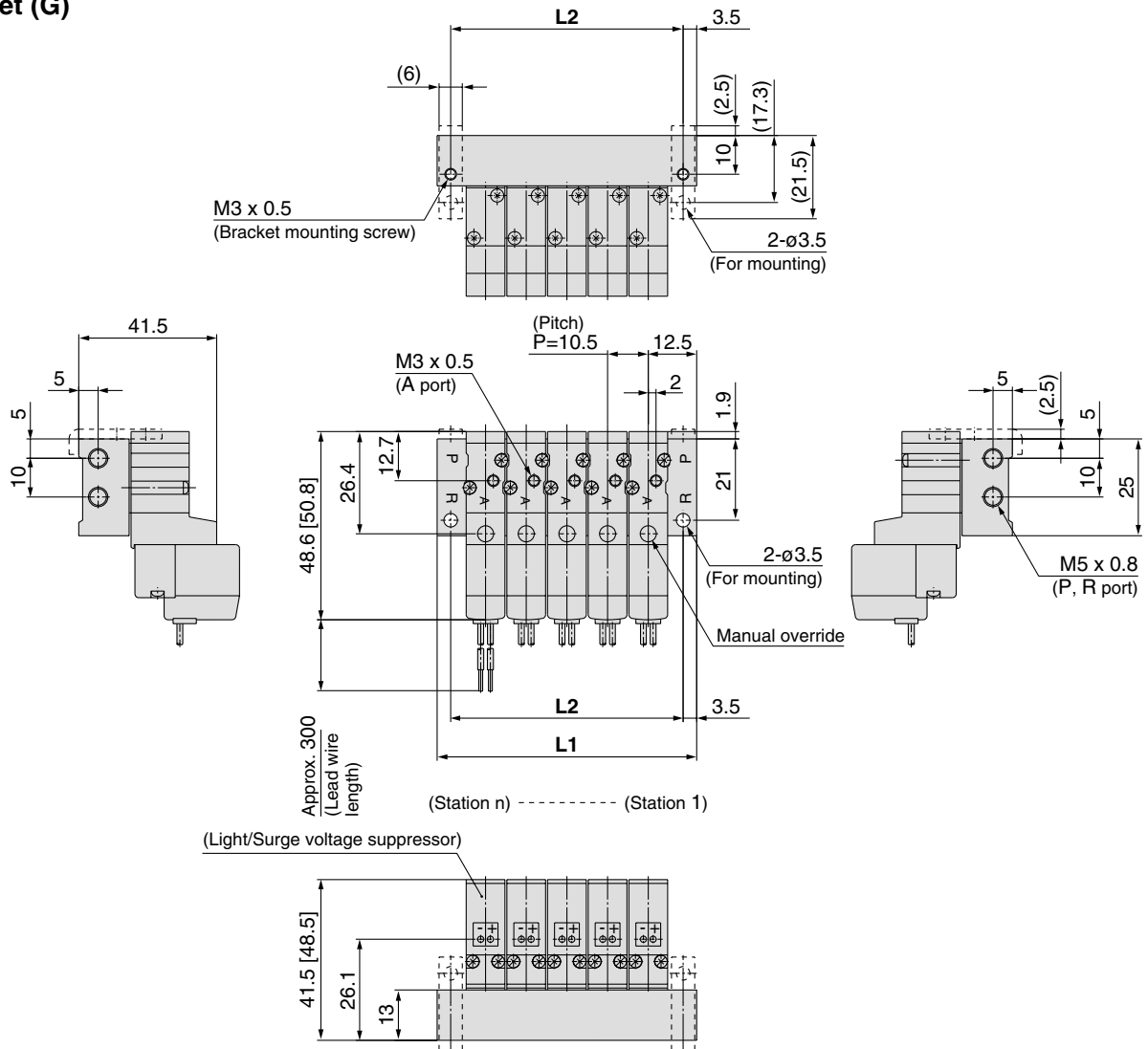
Note) For more than 8 stations, supply/exhaust air to/from both sides of P port and R port.

# 3 Port Pilot Operated Solenoid Valve Rubber Seal Series SYJ300

## Type 20 Manifold: Top Ported/SS3YJ3-20- Stations -00□ (-F)

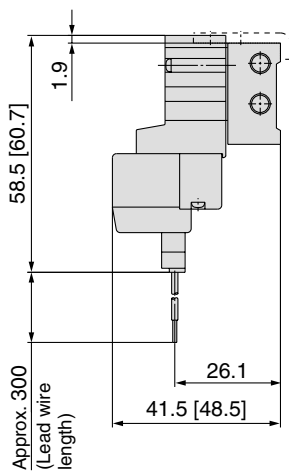


### Grommet (G)

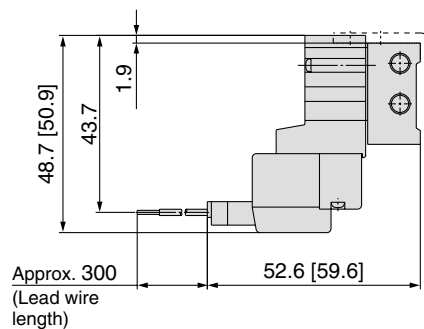


- V100
- SY
- SYJ**
- VK
- VZ
- VT
- VP
- VG
- VP
- S070
- VQ
- VKF
- VQZ
- VZ
- VS
- VFN

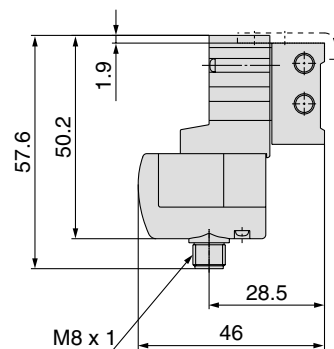
### L plug connector (L)



### M plug connector (M)



### M8 connector (WO)



\* Refer to page 4-4-61 for dimensions with connector cable.

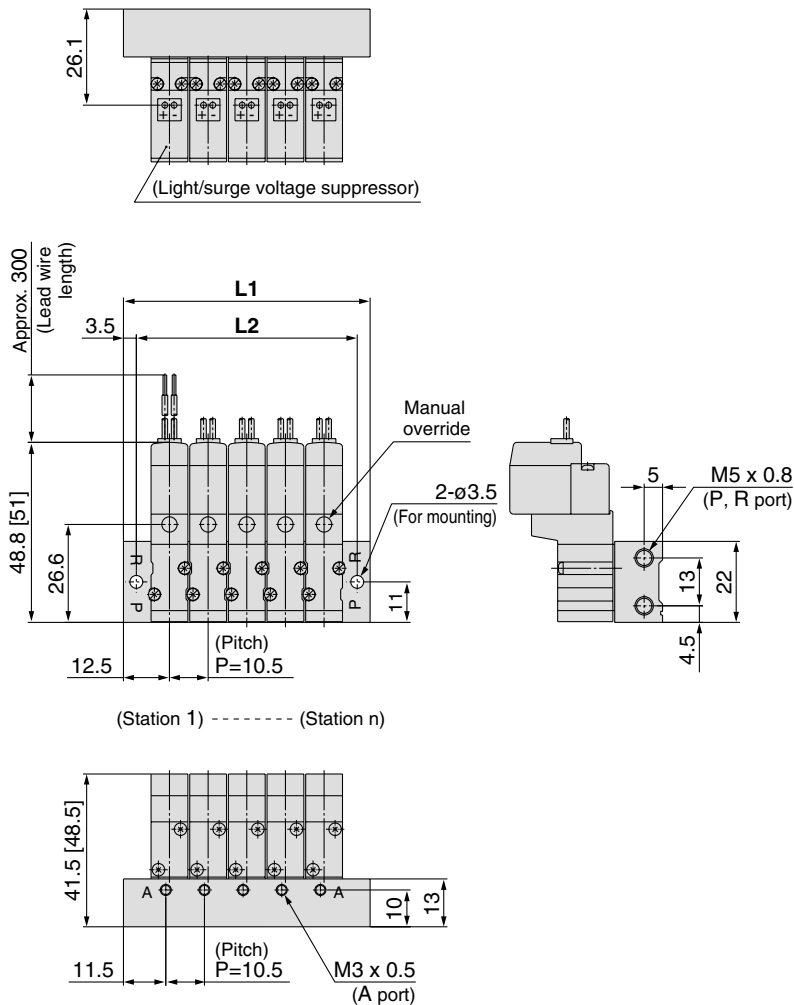
Station n	2	3	4	5	6	7	8	9	10	11	12	13	14	15	16	17	18	19	20
L1	35.5	46	56.5	67	77.5	88	98.5	109	119.5	130	140.5	151	161.5	172	182.5	193	203.5	214	224.5
L2	28.5	39	49.5	60	70.5	81	91.5	102	112.5	123	133.5	144	154.5	165	175.5	186	196.5	207	217.5

# Series SYJ300

## Type 41 Manifold: Side Ported/SS3YJ3-41- Stations -M3



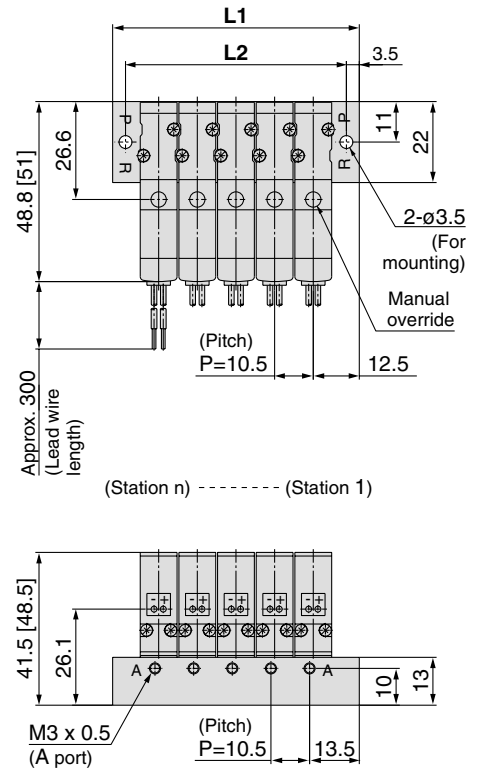
### Grommet (G)



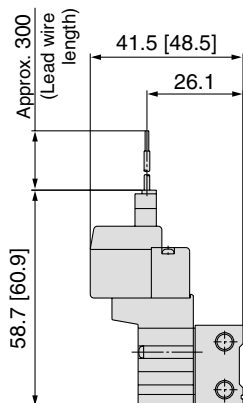
### Type 41 Manifold: Side Ported

(Pilot valve is on the A port side) /

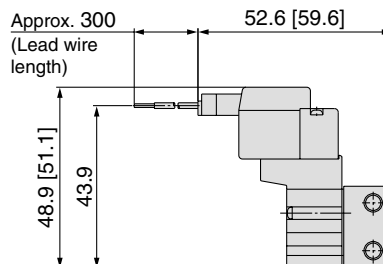
### SS3YJ3-S41- Stations -M3



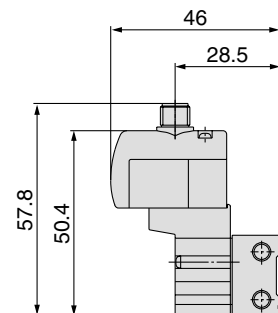
### L plug connector (L)



### M plug connector (M)



### M8 connector (WO)



\* Refer to page 4-4-61 for dimensions with connector cable.

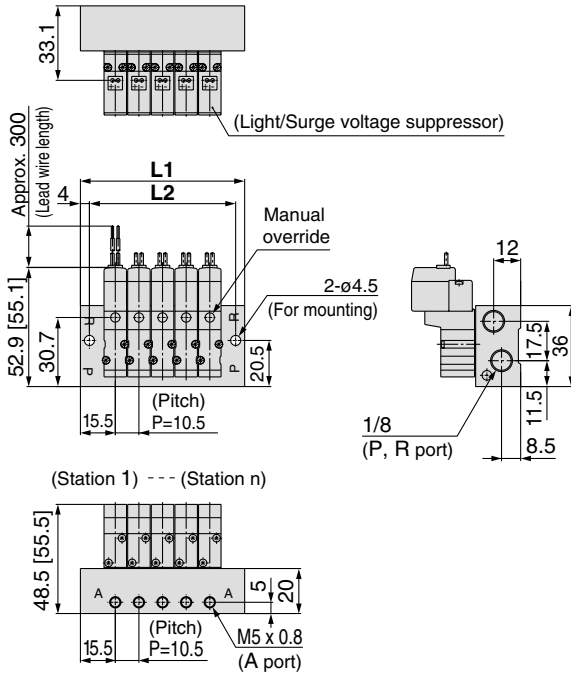
Station n	Station 2	3	4	5	6	7	8	9	10	11	12	13	14	15	16	17	18	19	Station 20
L1	35.5	46	56.5	67	77.5	88	98.5	109	119.5	130	140.5	151	161.5	172	182.5	193	203.5	214	224.5
L2	28.5	39	49.5	60	70.5	81	91.5	102	112.5	123	133.5	144	154.5	165	175.5	186	196.5	207	217.5

# 3 Port Pilot Operated Solenoid Valve Rubber Seal Series SYJ300

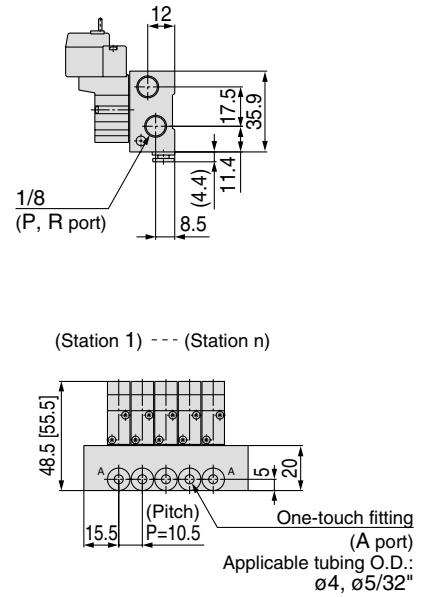
Type 42 Manifold: Side Ported/SS3YJ3-42- Stations -M5, C4 N3

\* [ ] for AC

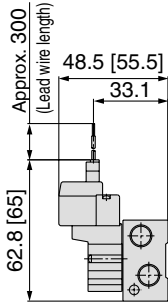
**Grommet (G)**  
For M5



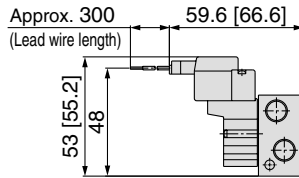
For C4 N3  (Built-in One-touch fitting)



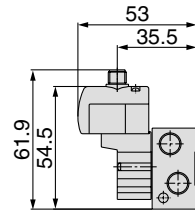
**L plug connector (L)**



**M plug connector (M)**



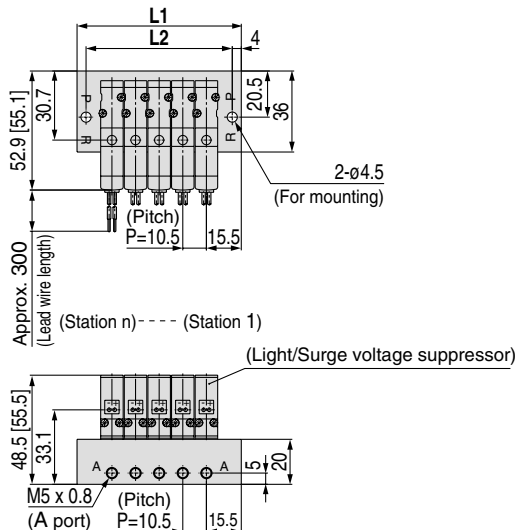
**M8 connector (WO)**



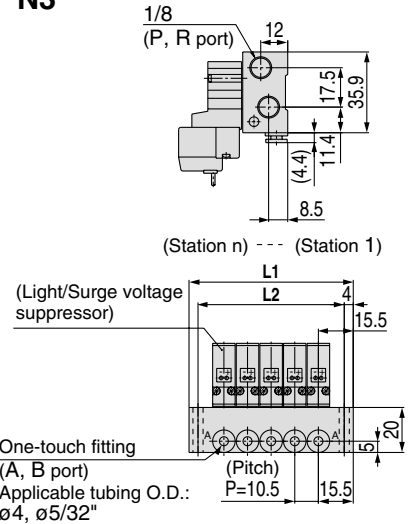
\* Refer to page 4-4-61 for dimensions with connector cable.

Type 42 Manifold: Side Ported (Pilot valve is on the A port side)/SS3YJ3-S42- Stations -M5, C4 N3

**Grommet (G)**  
For M5



For C4 N3  (Built-in One-touch fitting)



Station n	Station 2	3	4	5	6	7	8	9	10	11	12	13	14	15	16	17	18	19	Station 20
<b>L1</b>	41.5	52	62.5	73	83.5	94	104.5	115	125.5	136	146.5	157	167.5	178	188.5	199	209.5	220	230.5
<b>L2</b>	33.5	44	54.5	65	75.5	86	96.5	107	117.5	128	138.5	149	159.5	170	180.5	191	201.5	212	222.5

V100

SY

**SYJ**

VK

VZ

VT

VP

VG

VP

S070

VQ

VKF

VQZ

VZ

VS

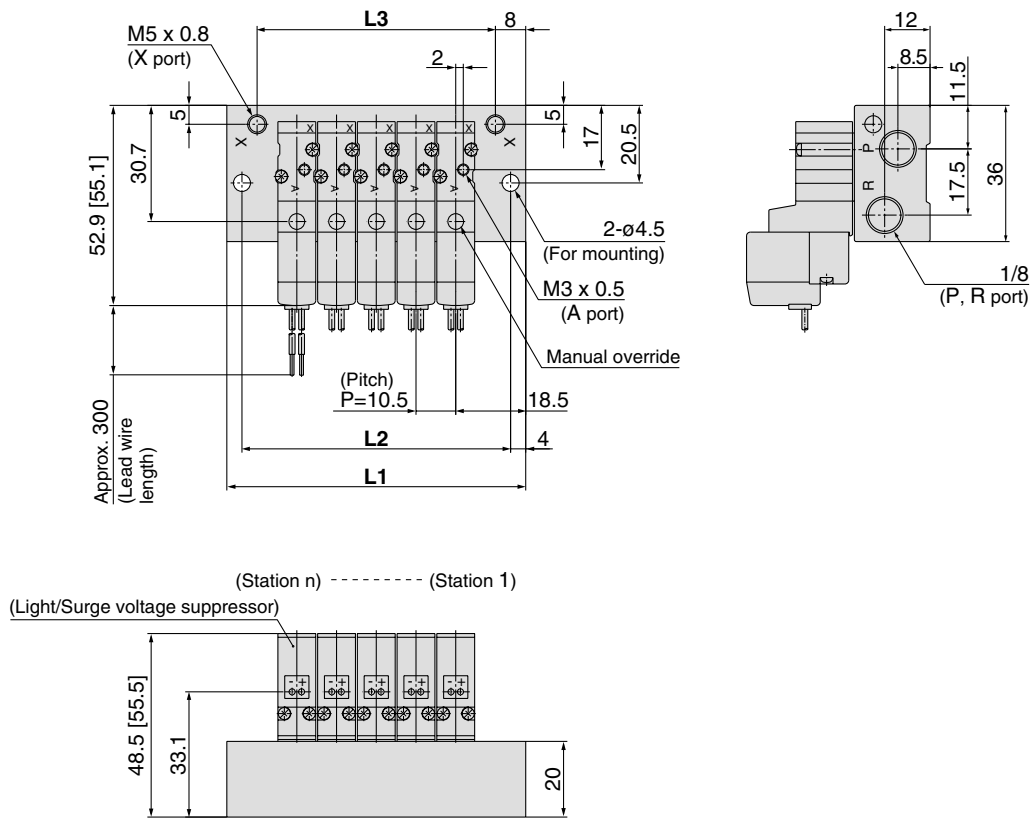
VFN

# Series SYJ300

Type 20R Manifold: Top Ported (External Pilot Type)/SS3YJ3-20R-**Stations** -00 □

\* [ ] for AC

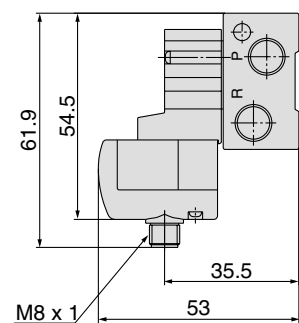
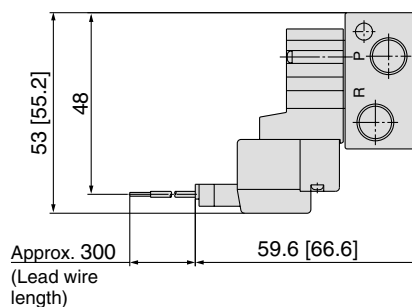
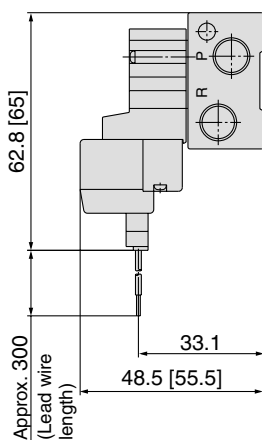
## Grommet (G)



## L plug connector (L)

## M plug connector (M)

## M8 connector (WO)



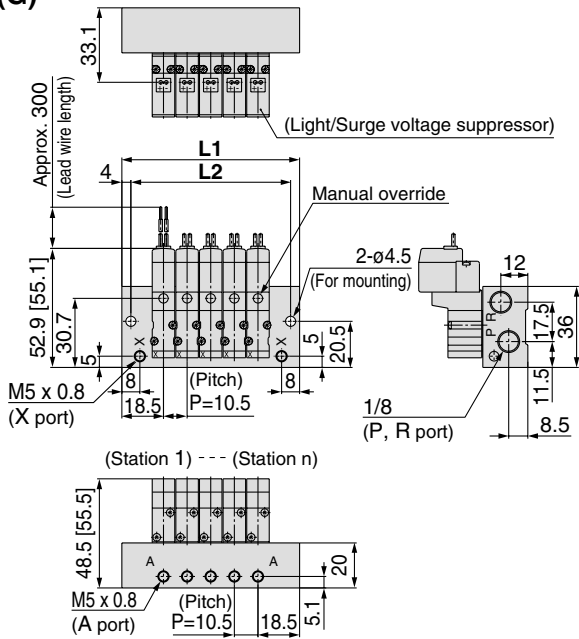
\* Refer to page 4-4-61 for dimensions with connector cable.

Station n	Station 2	3	4	5	6	7	8	9	10	11	12	13	14	15	16	17	18	19	Station 20
<b>L1</b>	47.5	58	68.5	79	89.5	100	110.5	121	131.5	142	152.5	163	173.5	184	194.5	205	215.5	226	236.5
<b>L2</b>	39.5	50	60.5	71	81.5	92	102.5	113	123.5	134	144.5	155	165.5	176	186.5	197	207.5	218	228.5
<b>L3</b>	31.5	42	52.5	63	73.5	84	94.5	105	115.5	126	136.5	147	157.5	168	178.5	189	199.5	210	220.5

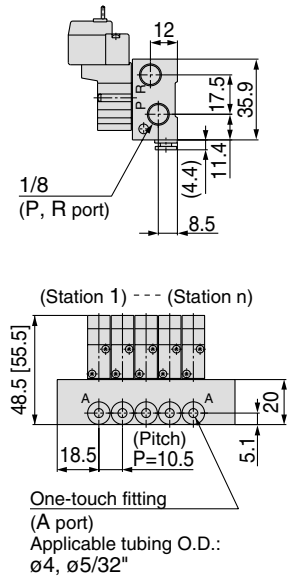
# 3 Port Pilot Operated Solenoid Valve Rubber Seal Series SYJ300

Type 42R Manifold: Side Ported (External Pilot Type)/SS3YJ3-42R- Stations -M5, C4 N3 ⊞ ⊞ \* [ ] for AC

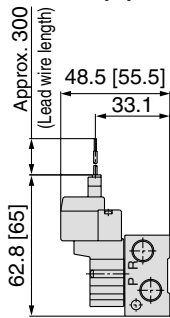
**Grommet (G)**  
For M5



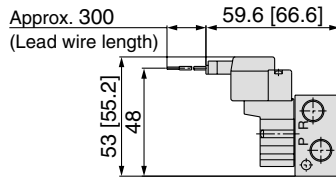
For C4 N3 ⊞ (Built-in One-touch fitting)



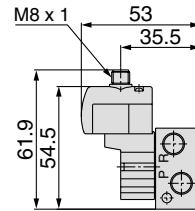
**L plug connector (L)**



**M plug connector (M)**



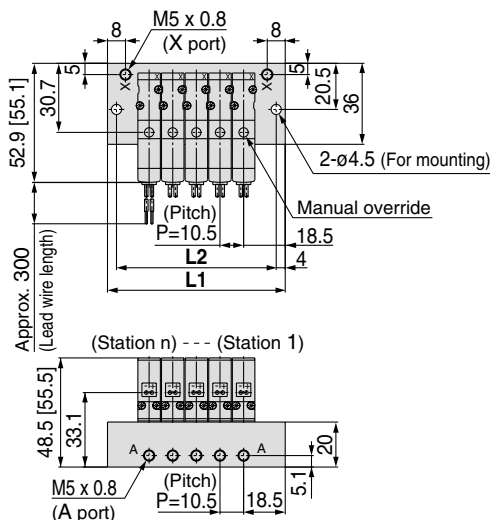
**M8 connector (WO)**



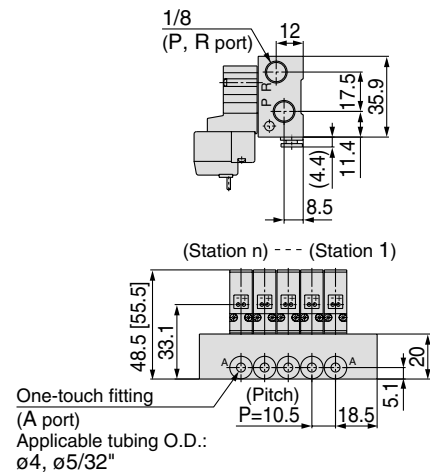
\* Refer to page 4-4-61 for dimensions with connector cable.

Type S42R Manifold: Side Ported (Pilot valve is on the A port side)/SS3YJ3-S42R- Stations -M5, C4 N3 ⊞ ⊞

**Grommet (G)**  
For M5



For C4 N3 ⊞ (Built-in One-touch fitting)



Station n	Station 2	3	4	5	6	7	8	9	10	11	12	13	14	15	16	17	18	19	Station 20
L1	47.5	58	68.5	79	89.5	100	110.5	121	131.5	142	152.5	163	173.5	184	194.5	205	215.5	226	236.5
L2	39.5	50	60.5	71	81.5	92	102.5	113	123.5	134	144.5	155	165.5	176	186.5	197	207.5	218	228.5

V100

SY

**SYJ**

VK

VZ

VT

VP

VG

VP

S070

VQ

VKF

VQZ

VZ

VS

VFN