

# 5 port solenoid valve with detent SY-X25 Series



## Manifold Flow characteristics <sup>1)</sup>

### Plug-in metal base

Series	Piping option	Port size		Valve flow-rate characteristics					
		1, 5, 3 (P, EA, EB)	4, 2 (A, B)	1→4/2 (P→A/B)			4/2→5/3 (A/B→E)		
				C [dm <sup>3</sup> /(s·bar)]	b	Q [l/min] (ANR) <sup>2)</sup>	C [dm <sup>3</sup> /(s·bar)]	b	Q [l/min] (ANR) <sup>2)</sup>
SY3000	Side ported	1/8	C6	1.1	0.19	262	1.1	0.15	256
	Bottom ported	1/8	C6	1.2	0.31	307	1.2	0.14	278
SY5000	Side ported	1/4	C8	2.6	0.28	653	2.6	0.14	603
	Bottom ported	1/4	C8	2.7	0.35	709	2.8	0.20	671
SY7000	Side ported	3/8	C10	3.8	0.27	948	4.0	0.20	958
	Bottom ported	3/8	C10	4.1	0.34	1070	4.8	0.20	1150

### Resin base

Series	Piping option	Port size		Valve flow-rate characteristics					
		1, 5, 3 (P, EA, EB)	4, 2 (A, B)	1→4/2 (P→A/B)			4/2→5/3 (A/B→E)		
				C [dm <sup>3</sup> /(s·bar)]	b	Q [l/min] (ANR) <sup>2)</sup>	C [dm <sup>3</sup> /(s·bar)]	b	Q [l/min] (ANR) <sup>2)</sup>
SY3000	Side ported	C8	C6	1.4	0.30	356	1.6	0.19	381
	Bottom ported	C8	C6	1.2	0.29	303	1.3	0.19	310
SY5000	Side ported	C10	C8	3.3	0.30	839	3.6	0.17	848
	Bottom ported	C10	C8	3.3	0.29	834	4.2	0.26	1042
SY7000	Side ported	C12	C12	6.2	0.23	1511	5.9	0.20	1413
	Bottom ported	C12	C12	6.2	0.25	1529	6.6	0.21	1590

1) The value is for manifold base with 5 stations and individually operated 2-position type.  
 2) These values have been calculated according to ISO 6358 and indicate the flow rate under standard conditions with an inlet pressure of 87 psi (0.6 MPa) (relative pressure) and a pressure drop of 14.5 psi (0.1 MPa).  
 3) These values are applicable to rubber seal type valves.

## Dimensions

Dimensions are the same as the standard product. Please refer to the catalogue CAT.EUS11-103Dd at smc.eu.

## Other SY safety specials



## Global Manufacturing, Distribution and Service Network

### Worldwide Subsidiaries

#### EUROPE

**AUSTRIA**  
SMC Pneumatik GmbH (Austria)  
**BELGIUM**  
SMC Pneumatics N.V./S.A.  
**BULGARIA**  
SMC Industrial Automation Bulgaria EOOD  
**CROATIA**  
SMC Industrijska Automatika d.o.o.  
**CZECH REPUBLIC**  
SMC Industrial Automation CZ s.r.o.  
**DENMARK**  
SMC Pneumatik A/S  
**ESTONIA**  
SMC Pneumatics Estonia  
**FINLAND**  
SMC Pneumatics Finland OY  
**FRANCE**  
SMC Pneumatique S.A.  
**GERMANY**  
SMC Pneumatik GmbH  
**GREECE**  
SMC Hellas EPE  
**HUNGARY**  
SMC Hungary Ipari Automatizálási Kft.  
**IRELAND**  
SMC Pneumatics (Ireland) Ltd.  
**ITALY**  
SMC Italia S.p.A.  
**KAZAKHSTAN**  
LLP "SMC Kazakhstan"

**LATVIA**  
SMC Pneumatics Latvia SIA  
**LITHUANIA**  
UAB "SMC Pneumatics"  
**NETHERLANDS**  
SMC Pneumatics B.V.  
**NORWAY**  
SMC Pneumatics Norway AS  
**POLAND**  
SMC Industrial Automation Polska Sp. z o.o.  
**ROMANIA**  
SMC Romania S.r.l.  
**RUSSIA**  
SMC Pneumatik LLC.  
**SLOVAKIA**  
SMC Priemyselna Automatizácia, Spol s.r.o.  
**SLOVENIA**  
SMC Industrijska Avtomatika d.o.o.  
**SPAIN / PORTUGAL**  
SMC España, S.A.  
**SWEDEN**  
SMC Pneumatics Sweden AB  
**SWITZERLAND**  
SMC Pneumatik AG  
**TURKEY**  
SMC Pnömatik Sanayi Ticaret ve Servis A.Ş.  
**UK**  
SMC Pneumatics (U.K.) Ltd.

#### ASIA / OCEANIA

**AUSTRALIA**  
SMC Pneumatics (Australia) Pty. Ltd.  
**CHINA**  
SMC (China) Co., Ltd.  
SMC Pneumatics (Guangzhou) Ltd.  
**HONG KONG**  
SMC Pneumatics (Hong kong) Ltd.  
**INDIA**  
SMC Pneumatics (India) Pvt. Ltd.  
**INDONESIA**  
PT. SMC Pneumatics Indonesia  
**JAPAN**  
SMC Corporation  
**MALAYSIA**  
SMC Pneumatics (S.E.A.) Sdn. Bhd.  
**NEW ZEALAND**  
SMC Pneumatics (N.Z.) Ltd.  
**PHILIPPINES**  
Shoketsu SMC Corporation  
**SINGAPORE**  
SMC Pneumatics (S.E.A.) Pte. Ltd.  
**SOUTH KOREA**  
SMC Pneumatics Korea Co., Ltd.  
**TAIWAN**  
SMC Pneumatics (Taiwan) Co., Ltd.  
**THAILAND**  
SMC (Thailand) Ltd.  
**UNITED ARAB EMIRATES**  
SMC Pneumatics Middle East FZE

**VIETNAM**  
SMC Pneumatics (VN) Co., Ltd.

**AFRICA**  
**SOUTH AFRICA**  
SMC Pneumatics (South Africa) Pty Ltd

#### NORTH, CENTRAL & SOUTH AMERICA

**ARGENTINA**  
SMC Argentina S.A.  
**BOLIVIA**  
SMC Pneumatics Bolivia S.R.L.  
**BRAZIL**  
SMC Pneumáticos do Brasil Ltda.  
**CANADA**  
SMC Pneumatics (Canada) Ltd.  
**CHILE**  
SMC Pneumatics (Chile) S.A.  
**COLOMBIA**  
SMC Colombia Sucursal de SMC Chile, S.A.  
**MEXICO**  
SMC Corporation (Mexico) S.A. de C.V.  
**PERU**  
SMC Corporation Peru S.A.C.  
**USA**  
SMC Corporation of America  
**VENEZUELA**  
SMC Neumatica Venezuela S.A.

## U.S. & Canadian Sales Offices

### WEST

Austin  
Dallas  
Los Angeles  
Phoenix  
Portland  
San Jose

### CENTRAL

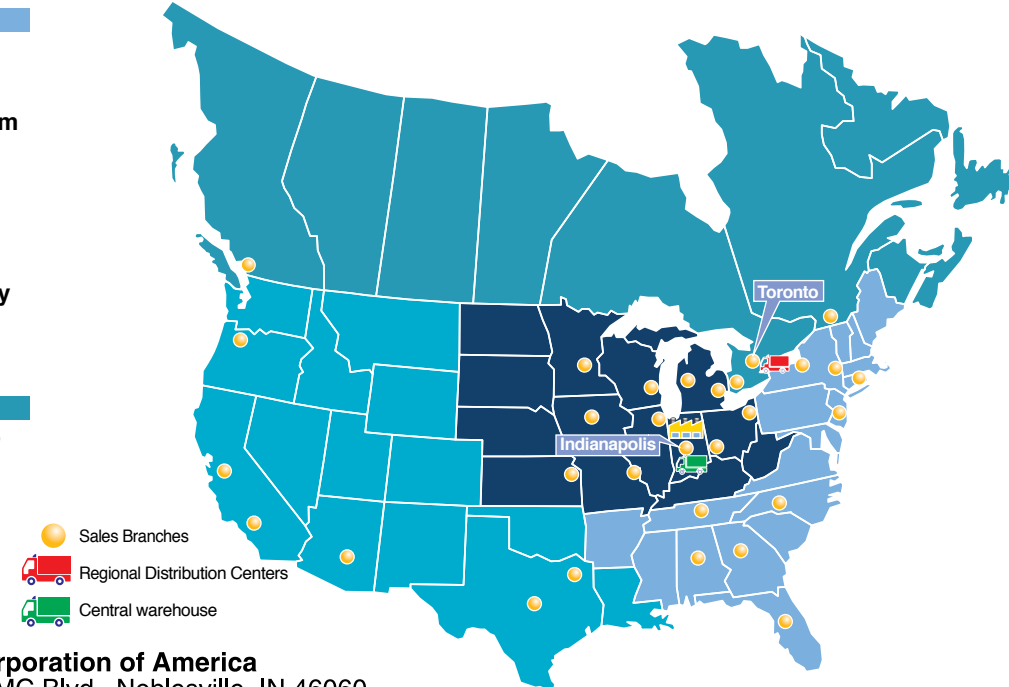
Chicago  
Cincinnati  
Cleveland  
Detroit  
Des Moines  
Grand Rapids  
Indianapolis  
Kansas City  
Milwaukee  
Minneapolis  
St. Louis

### EAST

Albany  
Atlanta  
Birmingham  
Boston  
Charlotte  
Knoxville  
Nashville  
New Jersey  
Rochester  
Tampa

### CANADA

Vancouver  
Toronto  
Windsor  
Montreal



SMC Corporation of America  
10100 SMC Blvd., Noblesville, IN 46060  
[www.smcusa.com](http://www.smcusa.com)

SMC Automation (Canada) Ltd.  
[www.smcautomation.ca](http://www.smcautomation.ca)

(800) SMC.SMC1 (762-7621)  
e-mail: [sales@smcusa.com](mailto:sales@smcusa.com)  
International inquiries: [www.smcworld.com](http://www.smcworld.com)



© 2020 SMC Corporation of America, All Rights Reserved.  
All reasonable efforts to ensure the accuracy of the information detailed in this catalog were made at the time of publishing. However, SMC can in no way warrant the information herein contained as specifications are subject to change without notice.



Automation • Controls • Process



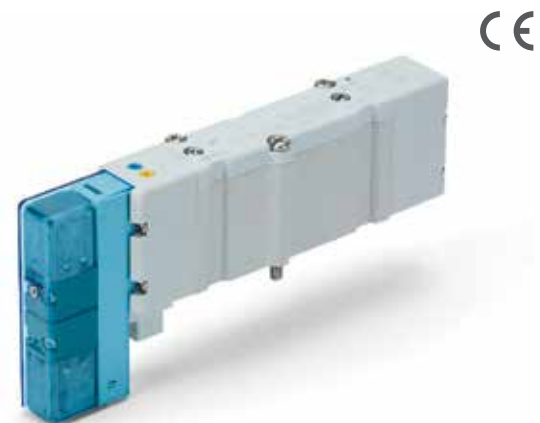
**Your safety in our focus**  
Safety related special products  
5 port solenoid valve with detent

## SY-X25 Series

# 5 port solenoid valve with detent SY-X25 Series



► We focus on machinery safety as a key part of our product development strategy. We have just developed a new version of our SY valve that will help you to satisfy your machine safety system requirements.



## Main Features

### ► A valve with detent - The concept

The SY-X25 versions contain a detent that fulfils the well-tried safety principle "safe position", according to ISO 13849-2. This means that in case of pressure loss or in the case of shock or vibration within the given limits the spool stays in its last position.

### ► Validated according to ISO 13849-2

This product is capable of meeting the relevant basic and well-tried safety principles. Please request our validation document for the details.

### ► SISTEMA library is available

SY safety valves data are integrated into SISTEMA free software tool. Download it from our website and be ready to build your safety function.

### ► Still an option of our SY, the all-purpose valve

Benefit from the high versatility this series gives you and create your own configuration, tailored to your needs.



## Applications

Because of its validated design meeting this valve can be used to implement many different types of safety function for all types of pneumatic actuators, specially for short stroke cylinders or grippers

## How to Order

Base mounted SY □ 200 □ □ - 5 □ □ 1 - □ - X25

Top ported SY □ 230 □ □ - 5 □ □ 1 - □ □ - □ - X25

### ① Valve series

3	SY3000
5	SY5000
7	SY7000

### ② Pilot type

-	Internal pilot
R	External pilot

### ③ Coil type

-	Standard
B	With power saving circuit

### ④ Light & surge suppressor

-	W/o indicator light & surge suppressor
R	W/surge suppressor (non polar)
U	W/indicator light & surge suppressor (non polar)
S	W/surge suppressor (positive common)
Z	W/indicator light & surge suppressor (positive common)
NS	W/surge suppressor (negative common)
NZ	W/indicator light & surge suppressor (negative common)

1) Only "Z" and "NZ" type is available for the product with power saving circuit.

### ⑤ Manual override

-	Non-locking push type
---	-----------------------

### ⑥ A, B port size

01	1/8"
C4	One touch fittings for Ø 4 tube
C6	One touch fittings for Ø 6 tube
C8	One touch fittings for Ø 8 tube
N3	One touch fittings for Ø 5/32" tube
N7	One touch fittings for Ø 1/4" tube
N9	One touch fittings for Ø 5/16" tube

### ⑦ Thread type

-	Rc
F	G
N	NPT
T	NPTF

### ⑧ Type of mounting screw

-	Round head combination screw
B	Hexagon socket head cap screw
K	Round head combination screw (falling-out -prevention type)
H	Hexagon socket head cap screw (falling-out -prevention type)

## Selected Part Numbers

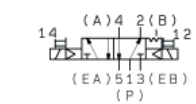
Part number	Max. flow rate [l/min]	Operating pressure range
SY3200-5U1-X25	310	14.5 to 101.5 psi (0.1 - 0.7 MPa)
SY3200R-5U1-X25	310	-14.5 to 101.5 psi (-100 kPa - 0.7 MPa)
SY5200-5U1-X25	1042	14.5 to 101.5 psi (0.1 - 0.7 MPa)
SY5200R-5U1-X25	1042	-14.5 to 101.5 psi (-100 kPa - 0.7 MPa)
SY7200-5U1-X25	1590	14.5 to 101.5 psi (0.1 - 0.7 MPa)
SY7200R-5U1-X25	1590	-14.5 to 101.5 psi (-100 kPa - 0.7 MPa)

## Valve Specifications

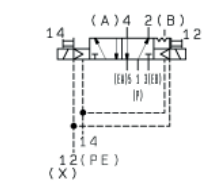
Valve type		Bistable 5 port solenoid valve with detent
Fluid		Air
Internal pilot operating pressure range	2-position double	14.5 to 101.5 psi (0.1 to 0.7 MPa)
External pilot operating pressure range	Operating pressure range	-14.5 to 101.5 psi (-100 kPa to 0.7 MPa)
	Pilot pressure range	36.3 to 101.5 psi (0.25 to 0.7 MPa)
	2-position double	
	4-position dual 3-port valve	
Ambient and fluid temperature		14 to 122°C (-10 to 50°F)
Max. operating frequency		5 Hz
Manual override		Non-locking push type
Pilot exhaust type	Internal pilot	Main/Pilot valve common exhaust
	External pilot	Pilot valve individual exhaust
Lubrication		Not required
Mounting orientation		Unrestricted
Impact/Vibration resistance (EN 60068)		150/50 m/s² (0.35 mm)
Enclosure		IP67 (based on IEC60529)
Coil rated voltage [DC]		24 VDC
Allowable voltage fluctuation		+/- 10 % of rated voltage
Power consumption	Standard	0.35 W (17 mA)
Surge voltage suppressor		Diode (Varistor for non-polar type)
Indicator light		LED
Required air quality		Min 5 µm filtering

## Symbols

### SY□200



### SY□200R



For dimensions and other details refer to general catalogue of SY-X350 series at [www.smcusa.com](http://www.smcusa.com)