

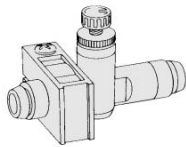
# Related Products: Holder Series **TMH**

**A holder for securing a speed controller (In-line type) with One-touch fitting.**

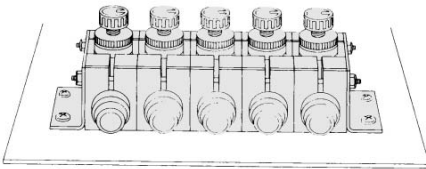
**Universal mounting**



The holder can be used to secure an individual part.

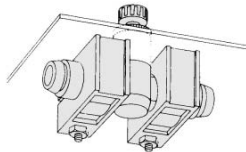


**Adaptable for the manifold application.** Note)



Note) Mounting bracket is not available. This is an application example.

**Can be mounted on the panel.**



## Specifications

|                     |               |
|---------------------|---------------|
| Ambient temperature | -20 to 60°C   |
| Material            | Polypropylene |
| Color               | White         |

Accessory: Round head Phillips screw for mounting (Black zinc chromated).

## Model

| Model       |           | Size<br>(Nominal x Height) | Piece |
|-------------|-----------|----------------------------|-------|
| Metric size | Inch size |                            |       |
| TMH-23J     | TMH-01J   | M3 x 15                    | 1     |
| TMH-04J     | TMH-03J   |                            |       |
| TMH-06J     | TMH-05    | M3 x 20                    |       |
| TMH-06      | TMH-07    | M4 x 25                    |       |
| TMH-08      | TMH-09    |                            |       |
| TMH-10      | TMH-11    | M4 x 35                    |       |
| TMH-12      | TMH-13    |                            |       |

## Correspondence of In-line Speed Controller and Holder

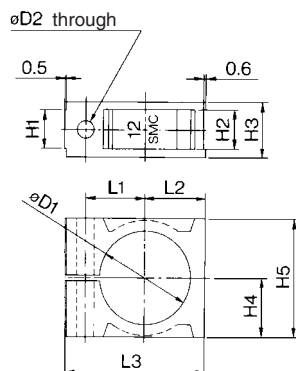
### Metric Size

| Applicable tubing size | Applicable tubing |         |         |        |        |        |
|------------------------|-------------------|---------|---------|--------|--------|--------|
|                        | 23                | 04      | 06      | 08     | 10     | 12     |
| Body size              | ø3.2              | ø4      | ø6      | ø8     | ø10    | ø12    |
| AS1001F                | TMH-23J           |         |         |        |        |        |
| AS2001F                |                   | TMH-04J | TMH-06J |        |        |        |
| AS2051F                |                   |         |         | TMH-08 |        |        |
| AS3001F                |                   |         | TMH-06  | TMH-08 |        |        |
| AS4001F                |                   |         |         |        | TMH-10 | TMH-12 |

### Inch Size

| Applicable tubing size | Applicable tubing |         |        |        |        |        |        |
|------------------------|-------------------|---------|--------|--------|--------|--------|--------|
|                        | 01                | 03      | 05     | 07     | 09     | 11     | 13     |
| Body size              | ø1/8"             | ø5/32"  | ø3/16" | ø1/4"  | ø5/16" | ø3/8"  | ø1/2"  |
| AS1001F                | TMH-01J           |         |        |        |        |        |        |
| AS2001F                |                   | TMH-03J |        |        |        |        |        |
| AS2051F                |                   |         | TMH-05 |        |        |        |        |
| AS3001F                |                   |         |        | TMH-07 |        | TMH-09 |        |
| AS4001F                |                   |         |        |        |        | TMH-11 | TMH-13 |

## Dimensions



| Model       |           | øD1  | øD2 | H1  | H2  | H3  | H4  | H5   | L1   | L2   | L3   | Symbol |
|-------------|-----------|------|-----|-----|-----|-----|-----|------|------|------|------|--------|
| Metric size | Inch size |      |     |     |     |     |     |      |      |      |      |        |
| TMH-23J     | TMH-01J   | 8.4  | 3.3 | 4.5 | 4.6 | 7.5 | 6   | 12   | 7.2  | 6.6  | 18   | 1/8J   |
| TMH-04J     | TMH-03J   | 9.3  |     |     |     |     |     |      |      |      |      | 1/32J  |
| —           | TMH-05    | 11.7 | 3.3 | 6.3 | 6.4 | 9.3 | 7.7 | 15.4 | 8.5  | 8.3  | 21   | 3/16   |
| TMH-06J     | —         | 11.6 |     |     |     |     |     |      |      |      |      | 6      |
| TMH-06      | —         | 13.1 | 4.3 | 7.1 | 7.2 | 11  | 10  | 20   | 11   | 10.6 | 26.5 | 1/4    |
| —           | TMH-07    | 13.5 |     |     |     |     |     |      |      |      |      | 8      |
| TMH-08      | TMH-09    | 15.5 | 4.3 | 9.5 | 9.6 | 14  | 14  | 28   | 14.2 | 14.6 | 34   | 5/16   |
| TMH-10      | —         | 18.8 |     |     |     |     |     |      |      |      |      | 10     |
| —           | TMH-11    | 18.2 | 4.3 | 9.5 | 9.6 | 14  | 14  | 28   | 14.2 | 14.6 | 34   | 3/8    |
| TMH-12      | —         | 21.2 |     |     |     |     |     |      |      |      |      | 12     |
| —           | TMH-13    | 22   |     |     |     |     |     |      |      |      |      | 1/2    |