

# Related Products: Multi-tube Holder Series *TM*

- Easy arrangement of tubing  
Easy tube insertion and firm fixation
- Possible to separate options depending on number of connection tubes
- Use of flame resistant resin (Equivalent to UL-94 standard V-0)



## Applicable Tubing

Tubing material	Nylon, Soft nylon, Polyurethane
Tubing O.D.	ø4, ø6, ø8, ø10, ø12

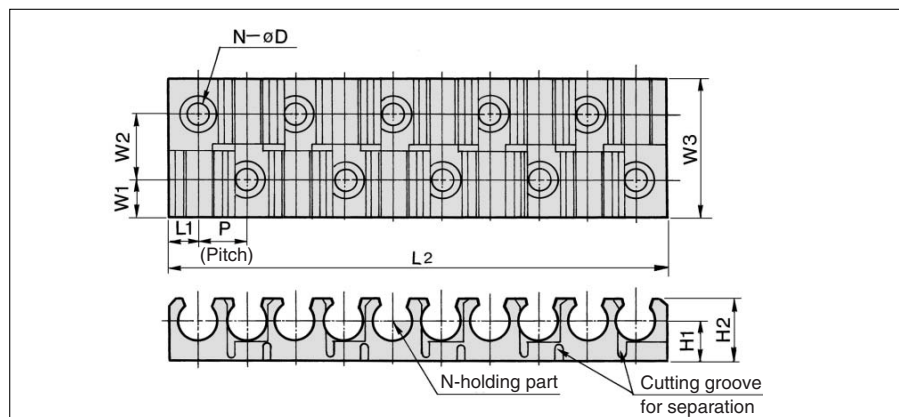
## Model

Applicable tubing O.D. (inch)	Model	No. of connecting tubes (Max.)		
		6	8	12
4	TM-04			●
6	TM-06			●
8	TM-08		●	
10	TM-10	●		
12	TM-12	●		

## Specifications

Ambient temperature	-20 to 60°C		
Material	Flame resistant polypropylene (Equivalent to UL-94 standard V-0)		
Color	Black		
Accessory	For mounting Cross recessed head countersunk tapping screw (Black zinc chromated)		
	Model	Size (Nominal x Length)	No. of tubings
	TM-04	2 x 6	4
	TM-06	2.6 x 8	
	TM-08	2.6 x 8	
	TM-10	3 x 8	
TM-12	3 x 8		

## Dimensions: Multi-tube Holder



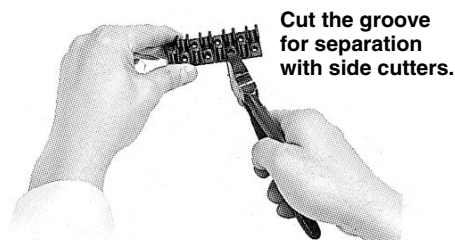
Applicable tubing O.D. (mm)	Model	N (No. of holding parts)	P	L <sub>1</sub>	L <sub>2</sub>	W <sub>1</sub>	W <sub>2</sub>	W <sub>3</sub>	H <sub>1</sub>	H <sub>2</sub>	øD	Mounting screw (Nominal x Length)
4	TM-04	12	6	3.25	72.5	4.5	8	17	5	7.5	2.2	2 x 6
6	TM-06	12	7.5	4.5	91.5	5.5	10	21	6.5	10	2.8	2.6 x 8
8	TM-08	8	9.5	5.5	77.5	6	11	23	7.5	12	2.8	2.6 x 8
10	TM-10	6	12.5	7.5	77.5	6.5	12	25	8.8	14.3	3.2	3 x 8
12	TM-12	6	15	9	93	6.5	12	25	9.8	16.3	3.2	3 x 8

## How to Use

### ⚠ Caution

1. Cut the multi-tube holder depending on number of tubes to be connected.

<Cutting method>



Cut the groove for separation with side cutters.

2. Install the multi-tube holder to the equipment with cross-recessed head, countersunk tapping screw.
3. Lay the tube across the gripper and push on the tube.
4. For removing the tubes, pull up the tubes from the gripper.