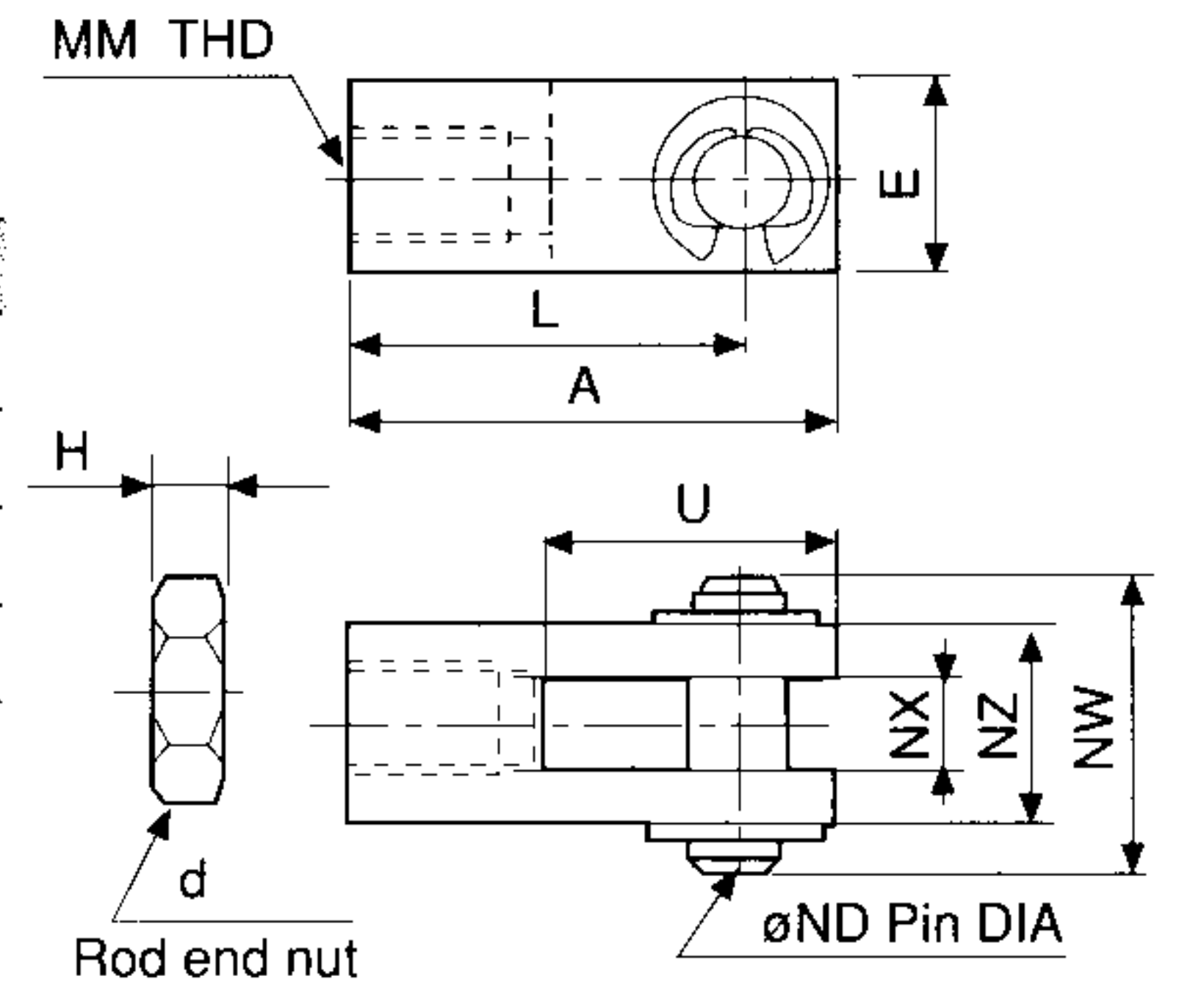


Accessories

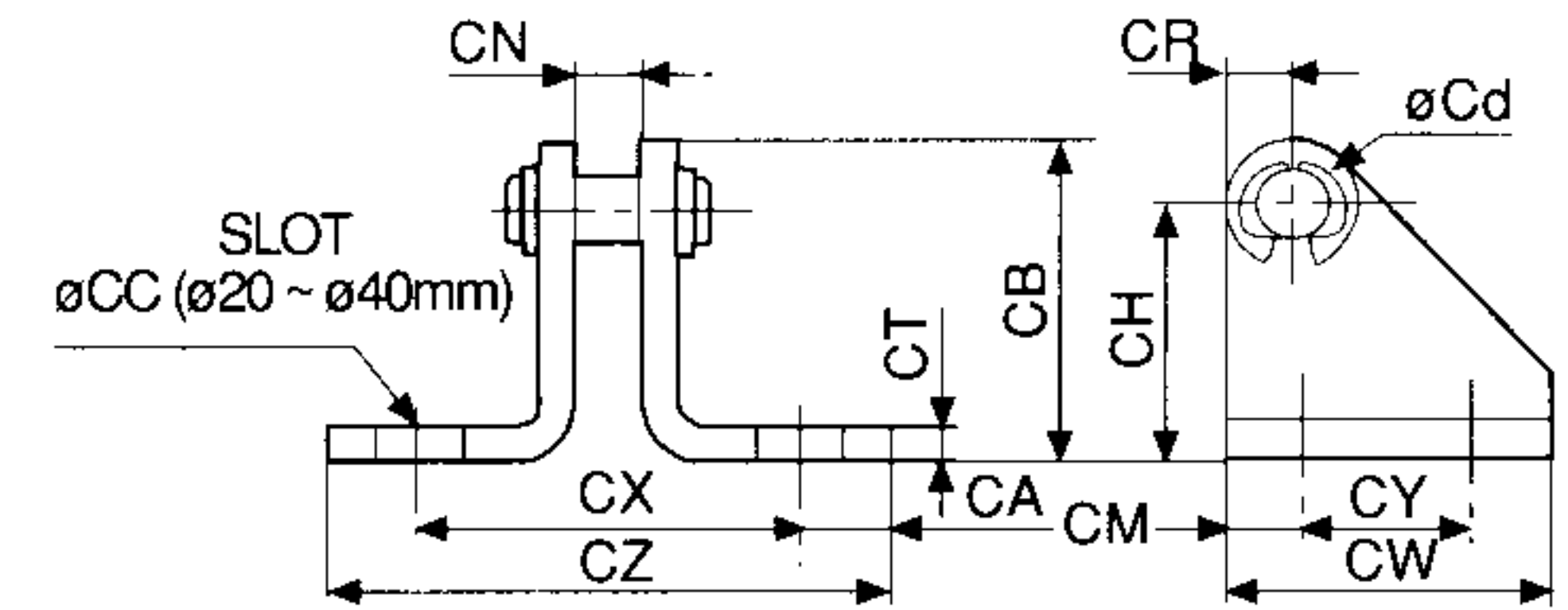
Piston Rod Clevis

Part No.	Bore mm	A	d	E	H	L	MM	ND	NX	NW	NZ	U
NY-075	20	1.19	1/4-28UNF	0.51	0.16	0.94	1/4-28UNF	0.25	0.25	0.71	0.51	0.69
NY-106	25	1.19	5/16-24UNF	0.51	0.19	0.94	5/16-24UNF	0.25	0.25	0.71	0.51	0.69
NY-125	32 • 40	1.69	7/16-20UNF	0.75	0.25	1.32	7/16-20UNF	0.38	0.38	1.02	0.75	0.94
NY-G050	50 • 63	1.69	1/2-20UNF	0.75	0.31	1.32	1/2-20UNF	0.38	0.38	1.02	0.75	0.94



Single Clevis Bracket

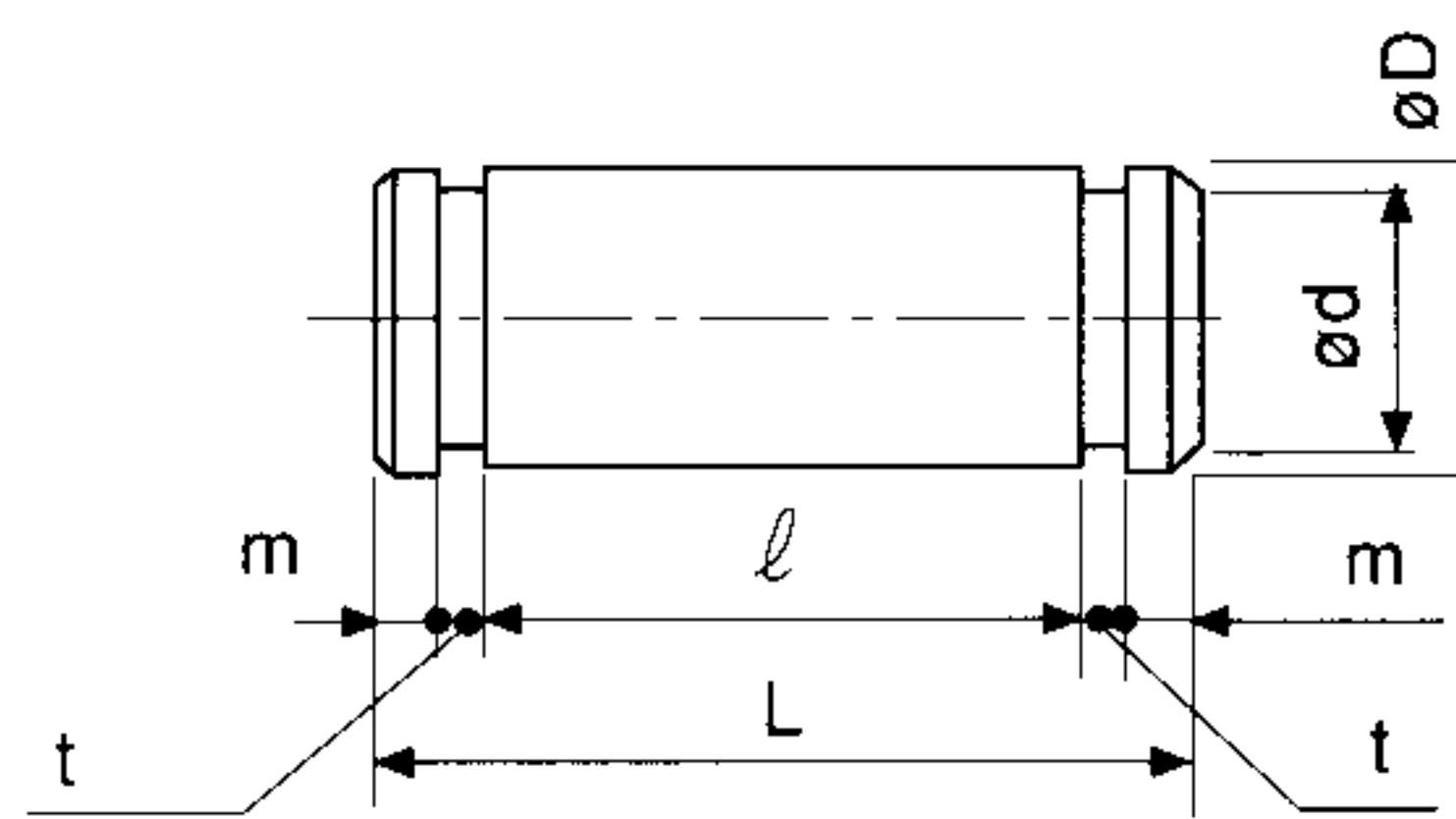
Part No.	Bore mm	CA	CB	CC	Cd	CH	CM	CN	CR	CT	CX	CW	CY	CZ
NCG-PC020	20 & 25	0.35	1.18	0.27	0.25	0.87	0.18	0.38	0.31	0.12	1.25	1.10	0.75	1.95
NCG-PC032	32	0.35	1.18	0.27	0.25	0.87	0.18	0.50	0.31	0.12	1.37	1.10	0.75	2.07
NCG-PC040	40	0.36	1.75	0.27	0.38	1.38	0.25	0.63	0.37	0.18	1.87	1.50	1.00	2.60
NCG-PC050	50	0.44	1.75	0.76	0.38	1.38	0.25	0.75	0.37	0.24	2.12	1.50	1.00	3.00
NCG-PC063	63	0.44	2.12	0.26	0.38	1.75	0.25	0.75	0.37	0.24	2.12	1.50	1.00	3.00



Note) Includes clevis pin and two retaining rings.

Single Clevis Pin

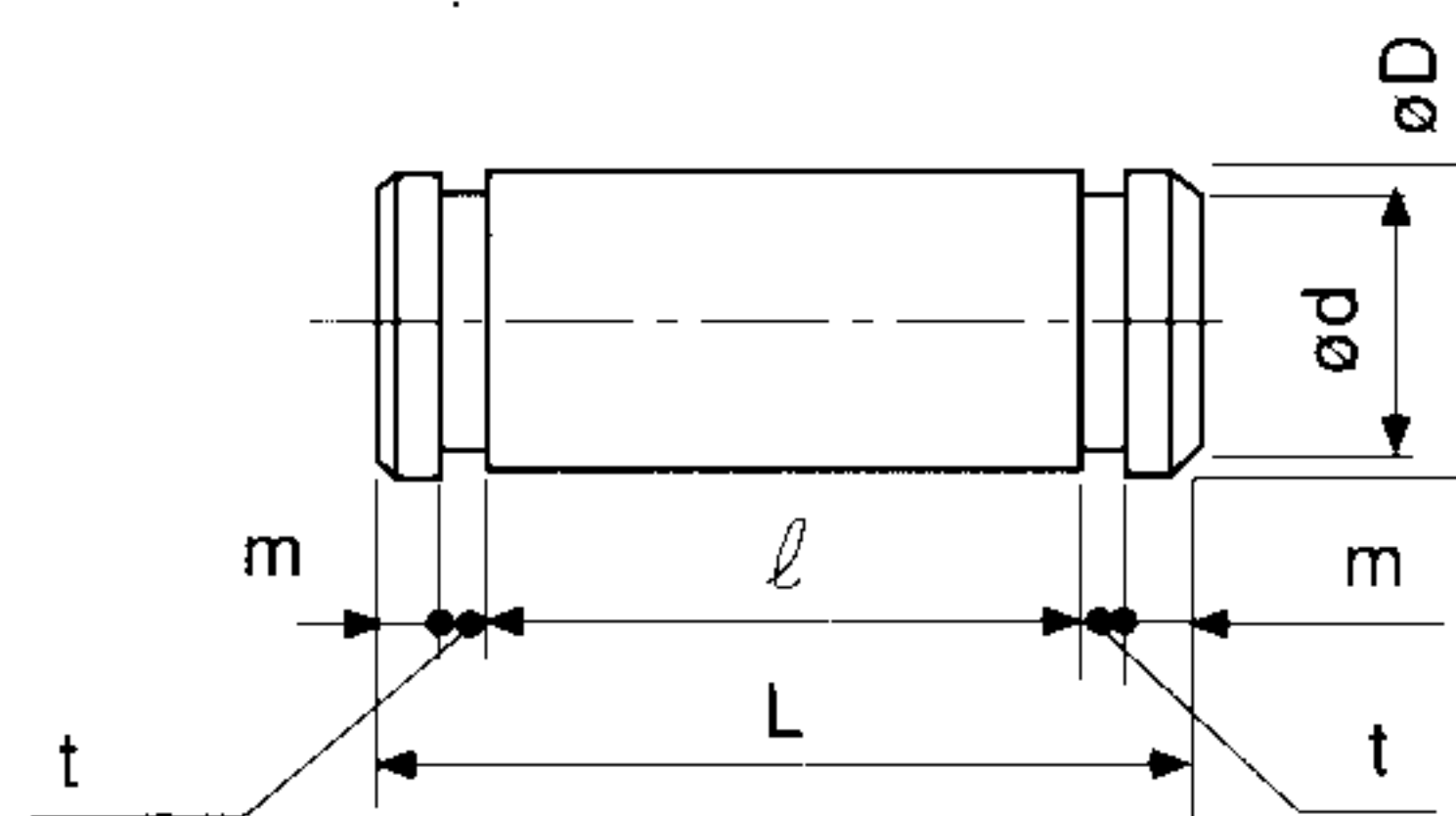
Part No.	Bore mm	øD	L	ød	ℓ	m	t
NCG-SP020	20	0.25	0.83	0.21	0.65	0.06	0.03
NCG-SP025	25	0.25	0.83	0.21	0.65	0.06	0.03
NCG-SP032	32	0.25	0.98	0.21	0.76	0.08	0.03
NCG-SP040	40	0.38	1.24	0.30	1.00	0.08	0.04
NCG-SP050	50	0.38	1.50	0.30	1.24	0.09	0.04
NCG-SP063	63	0.38	1.50	0.30	1.24	0.09	0.04



Note) Includes two retaining rings.

Double Clevis Pin

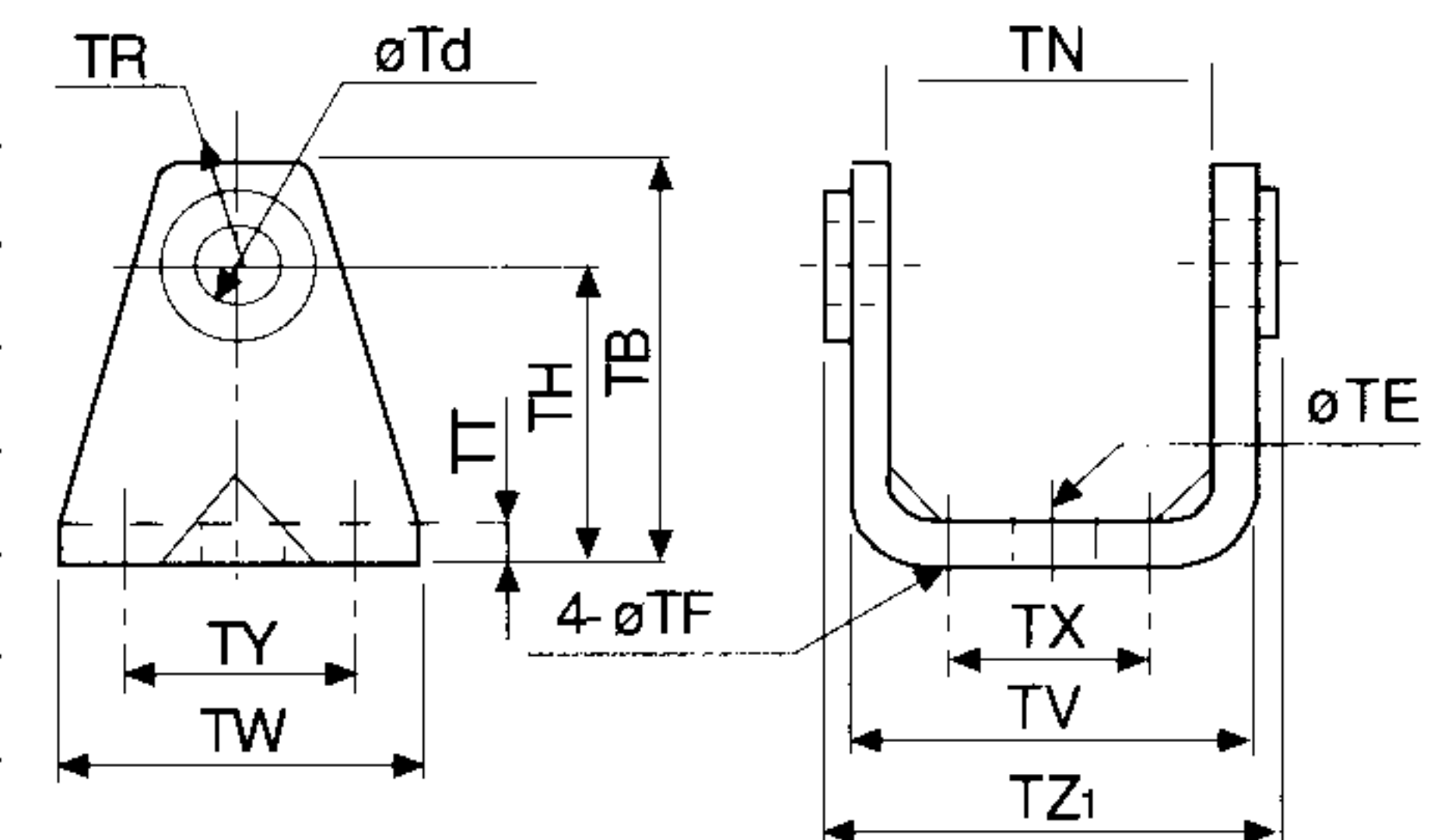
Part No.	Bore mm	øD	L	ød	ℓ	m	t
NCD-G02	20	0.315	1.71	0.30	1.52	0.06	0.04
NCD-G025	25	0.394	1.89	0.38	1.68	0.06	0.05
NCD-G03	32	0.472	2.34	0.45	2.12	0.06	0.05
NCD-G04	40	0.551	2.81	0.53	2.56	0.08	0.05
NCD-G05	50	0.630	3.38	0.60	3.13	0.08	0.05
NCD-G06	63	0.709	4.15	0.67	3.85	0.10	0.05



Note) Includes two retaining rings.

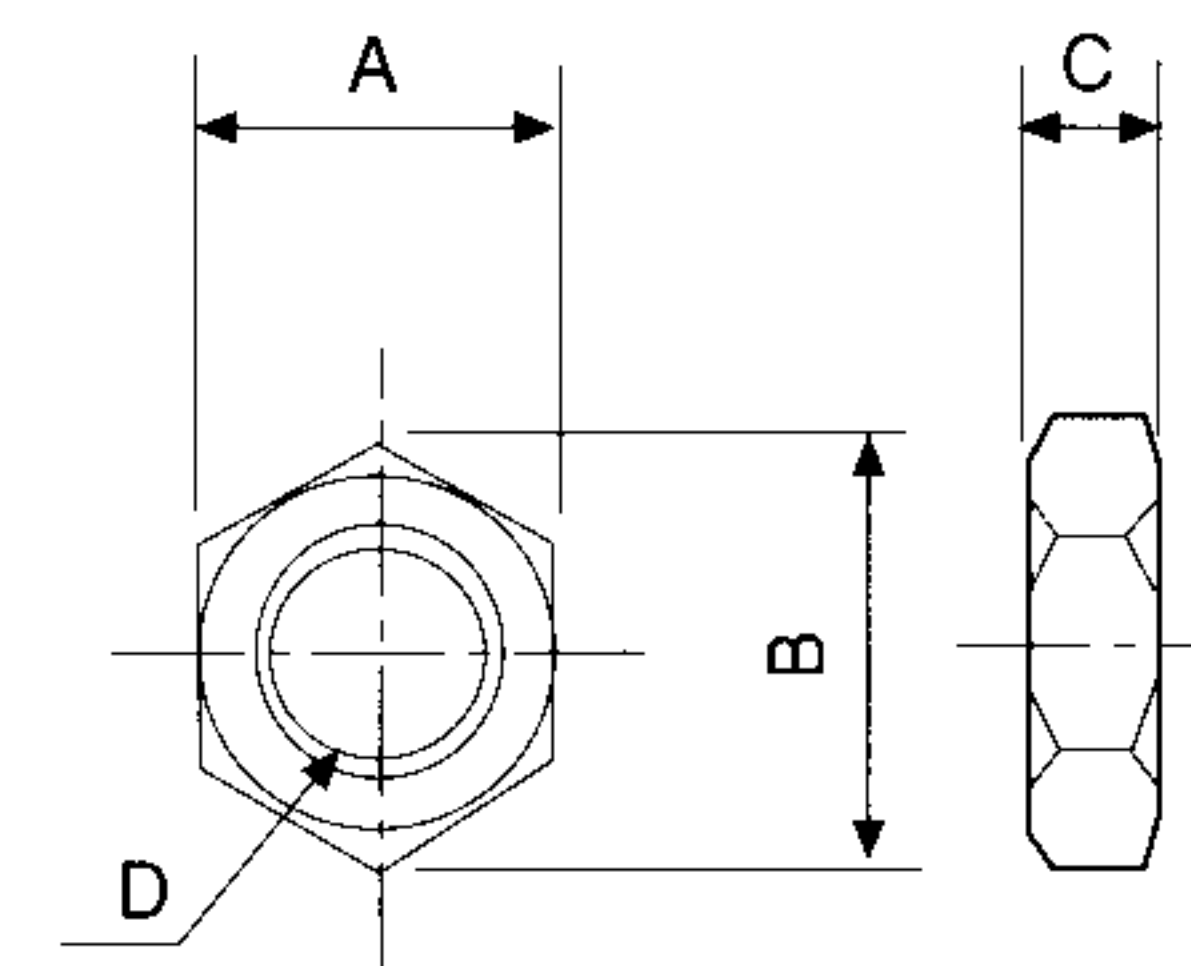
Trunnion Bracket and Double Clevis Bracket

Part No.	Bore mm	TB	øTd	øTE	øTF	TH	TN	TR	TT	TV	TW	TX	TY	TZ
NCG-P020	20	1.42	0.315	0.39	0.22	0.98	1.14	0.51	0.12	1.39	1.65	0.63	1.10	1.50
NCG-P025	25	1.69	0.394	0.39	0.22	1.18	1.30	0.59	0.12	1.55	1.65	0.79	1.10	1.65
NCG-P032	32	1.97	0.472	0.39	0.27	1.38	1.57	0.67	0.18	1.93	1.89	0.87	1.10	2.10
NCG-P040	40	2.28	0.551	0.39	0.27	1.57	1.93	0.83	0.18	2.28	2.20	1.18	1.18	2.53
NCG-P050	50	2.75	0.630	0.79	0.35	1.97	2.36	0.91	0.24	2.83	2.52	1.42	1.42	3.10
NCG-P063	63	3.23	0.709	0.79	0.43	2.36	2.91	0.98	0.31	3.54	2.91	1.81	1.81	3.80



Rod Jam Nut

Part No.	Bore mm	B	C	A	D
JM-025	20	0.50	0.16	0.44	1/4-28 UNF
JM-03	25	0.58	0.19	0.50	5/16-24 UNF
JM-045	32, 40	0.79	0.26	0.69	7/16-20 UNF
JM-05	50, 63	0.87	0.32	0.75	1/2-20 UNF



Series MB

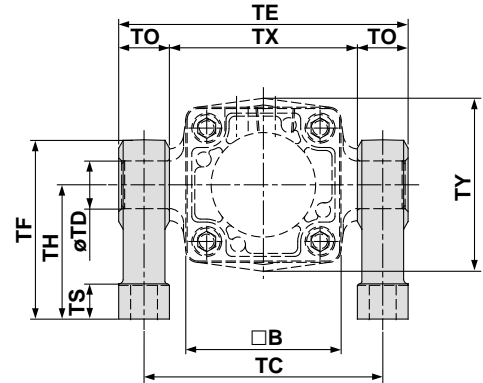
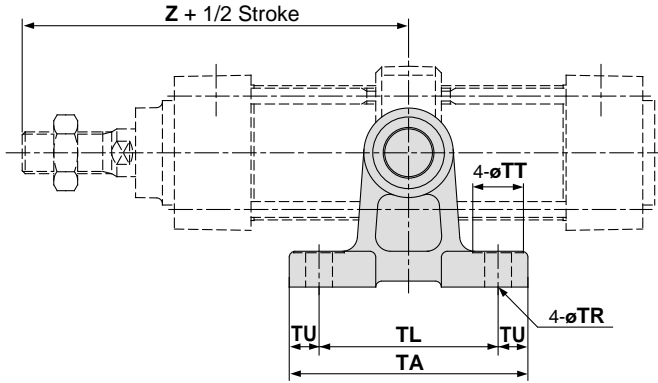
Trunnion/Double Clevis Pivot Bracket

Part No.

Cylinder model	MB□32	MB□40	MB□50	MB□63	MB□80	MB□100
Description						
Trunnion pivot bracket (1)	MB-S03	MB-S04		MB-S06		MB-S10
Double clevis pivot bracket	MB-B03		MB-B05		MB-B08	

Note 1) When ordering a trunnion pivot bracket, order 2 pcs. for 1 cylinder.

Trunnion pivot bracket



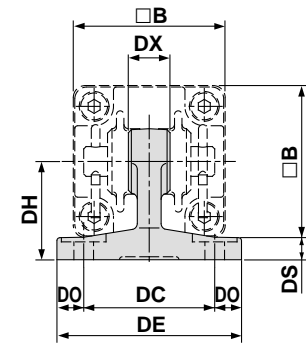
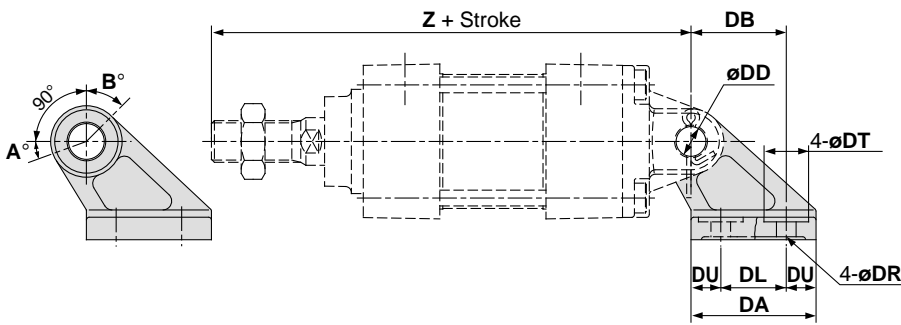
Part No.	Bore size (mm)	□B	TA	TL	TU	TC	TX	TE	TO	TR	TT	TS	TH	TF	Z**	TDH10
MB-S03	32	46	62	45	8.5	62	50	74	12	7	13	10	35	47	89	12 ^{+0.070} ₀
	40	52	80	60	10	80	63	97	17	9	17	12	45	60	93	16 ^{+0.070} ₀
MB-S04	50	65	80	60	10	92	75	109	17	9	17	12	45	60	105	16 ^{+0.070} ₀
	63	75	100	70	15	110	90	130	20	11	22	14	60	80	105	20 ^{+0.084} ₀
MB-S06	80	95	100	70	15	130	110	150	20	11	22	14	60	80	129	20 ^{+0.084} ₀
	100	114	120	90	15	158	132	184	26	13.5	24	17	75	100	129	25 ^{+0.084} ₀

(mm)

Without air cushion

Bore size (mm)	Z
32	92
40	96
50	109
63	109
80	134
100	134

Double clevis pivot bracket



Part No.	Bore size (mm)	□B	DA	DB	DL	DU	DC	DX	DE	DO	DR	DT	DS	DH	Z*	DDH10
MB-B03	32	46	42	32	22	10	44	14	62	9	6.6	15	7	33	154	10 ^{+0.058} ₀
	40	52	42	32	22	10	44	14	62	9	6.6	15	7	33	158	10 ^{+0.058} ₀
MB-B05	50	65	53	43	30	11.5	60	20	81	10.5	9	18	8	45	182	14 ^{+0.070} ₀
	63	75	53	43	30	11.5	60	20	81	10.5	9	18	8	45	182	14 ^{+0.070} ₀
MB-B08	80	95	73	64	45	14	86	30	111	12.5	11	22	10	65	228	22 ^{+0.084} ₀
	100	114	73	64	45	14	86	30	111	12.5	11	22	10	65	228	22 ^{+0.084} ₀

(mm)

Without air cushion

Bore size (mm)	Z
32	160
40	164
50	190
63	190
80	238
100	238

Rotating angle

Bore size (mm)	A°	B°	A°+B°+90°
32, 40	25°	45°	160°
50, 63	40°	60°	190°
80, 100	30°	55°	175°

* Mounting plate

Model without air cushion is designed to include rubber bumpers. The overall length is longer than the cylinder with air cushion as follows because the bumpers are attached to the both sides of the piston; ø32, ø40: +6mm, ø50, ø63: +8mm, ø80, ø100: +10mm

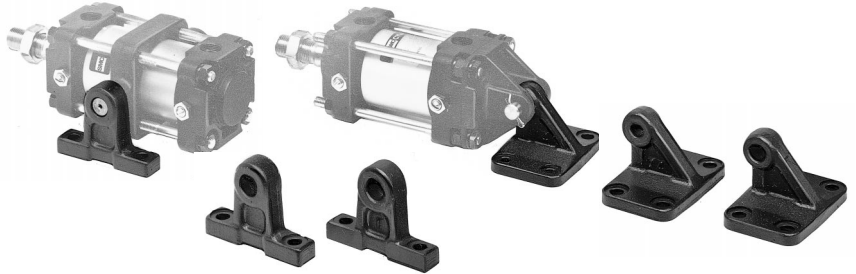
** Trunnion pivot bracket

Model without air cushion is designed to include rubber bumpers. The overall length is longer than the cylinder with air cushion as follows because the bumpers are attached to the both sides of the piston; ø32, ø40: +3mm, ø50, ø63: +4mm, ø80, ø100: +5mm

Air Cylinder/Standard: Double Acting Single Rod **Series CA1**

Trunnion, Double Clevis Pivot Bracket

• Strength is same as cylinder mounting brackets.



Applicable Series

Pivot bracket	Applicable series
Trunnion pivot bracket	CA1, CA1W, CA1WK CA1K, CA1Q, VS1, CBA1 CLA, CV3(*)
Double clevis pivot bracket	CA1, CA1K, CA1Q CBA1, CLA, CVS1(*)

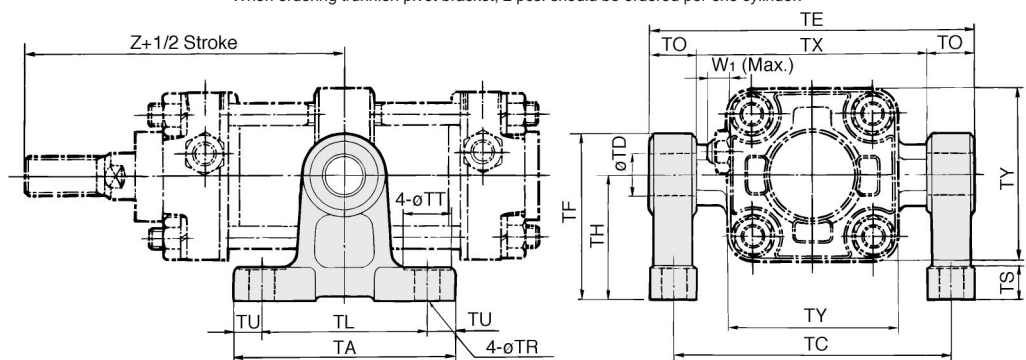
* Contact SMC on mounting.

Bracket	Bore	CA1□40	CA1□150	CA1□163	CA1□180	CA1□100
Trunnion pivot bracket		CA1-S04		CA1-S06	CA1-S08	
Double clevis pivot bracket		CA1-B04	CA1-B05	CA1-B06	CA1-B08	CA1-B10

Note) Order it separately because it is not specified in cylinder model no.
When ordering trunnion pivot bracket, 2 pcs. should be ordered per one cylinder.

Trunnion pivot bracket

Material: Casting steel
Surface treatment: Black coated
*This is reference drawing. Order trunnion pivot bracket separately.

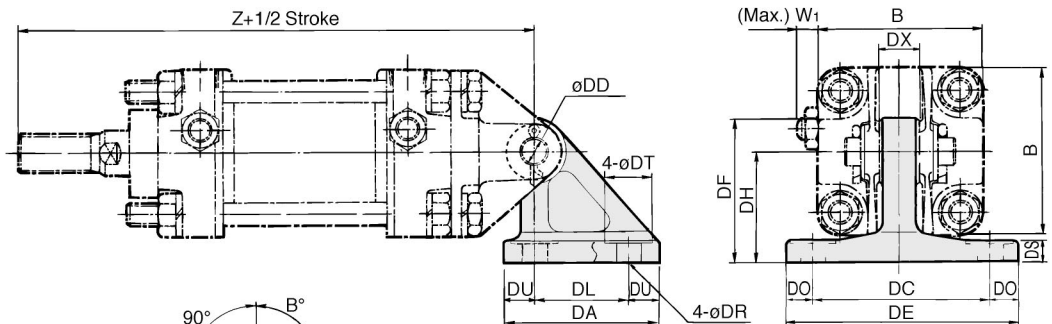


 CA1-S□...SCA10P, #1 to #3

Part No.	Bore (mm)	TA	TL	TU	TC	TX	TE	TO	TR	TT	TS	TH	TF	TY	W ₁	Z	TD-H10(hole)
CA1-S04	40	80	60	10	102	85	119	17	9	17	12	45	60	62	10	93	15 ^{+0.070} ₀
	50	80	60	10	112	95	129	17	9	17	12	45	60	74	10	103	15 ^{+0.070} ₀
CA1-S06	63	100	70	15	130	110	150	20	11	22	14	55	73	90	10	107	18 ^{+0.070} ₀
	80	120	90	15	166	140	192	26	13.5	24	17	75	100	110	12	129	25 ^{+0.084} ₀
CA1-S08	100	120	90	15	188	162	214	26	13.5	24	17	75	100	130	12	135	25 ^{+0.084} ₀

Double clevis pivot bracket


Material: Casting steel
Surface treatment: Black coated



Rotating Angle

Bore (mm)	A°	B°	A°+B°+90°
40 to 100	12°	60°	162°

Note) This is reference drawing. Order double clevis bracket separately.

 CA1-B□...SCA10P, #4 to #8

Part No.	Bore (mm)	DA	DL	DU	DC	DX	DE	DO	DR	DT	DS	DH	DF	B	W ₁	Z	DDH10(hole)
CA1-B04	40	57	35	11	65	15	85	10	9	17	8	40	52	60	10	165	10 ^{+0.058} ₀
CA1-B05	50	57	35	11	65	18	85	10	9	17	8	40	52	70	10	183	12 ^{+0.070} ₀
CA1-B06	63	67	40	13.5	80	25	105	12.5	11	22	10	50	66	85	10	196	16 ^{+0.070} ₀
CA1-B08	80	93	60	16.5	100	31.5	130	15	13.5	24	12	65	90	102	12	235	20 ^{+0.084} ₀
CA1-B10	100	93	60	16.5	100	35.5	130	15	13.5	24	12	65	90	116	12	256	25 ^{+0.084} ₀

* Pin, snap ring, etc. of double clevis and double knuckle joint are packed together.