



LOCKOUT-TAGOUT (LOTO) SOLUTION

**MANUAL SHUT-OFF VALVE IN STAINLESS STEEL
ISO 13849 VALIDATION APPLIED**



YOUR AUTOMATION PARTNER



MANUAL SHUT-OFF VALVE

Isolates supply and exhausts residual pressure

Lockout-Tagout (LoTo) is a procedure of all hazardous energy sources that supply power to a piece of equipment, machinery or systems which is used in industry and research settings. LoTo operations must be done on all equipment, machinery or system shut downs before authorized personnel can perform repairs or services on this. It requires that hazardous energy sources must be “isolated and rendered inoperative” before work is started on the equipment. Equipment and machinery shall have an Energy-Isolation-Device. These devices are put into the Off-Position to shut down the hazardous energy source. The isolated power sources (Off-Position) must be locked with a padlock if necessary.

LoTo is used across industries as a safe method of working on hazardous equipment and machinery and is mandated by law in some countries.



**Manual shut-off valve
Series VHS-X2155**

- Connection sizes: 1/4", 3/8", 1/2"
- Ventilation performance up to 1860 l/min
- Flow rate up to 2260 l/min

The benefits at a glance:

- > stainless steel
- > LoTo suitable
- > lockable
- > adaptable with FRL
- > cleanable
- > small and compact in size

Further adaptable SMC products in stainless steel



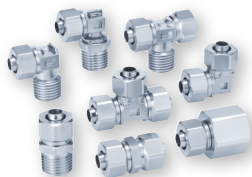
**Filter Regulator
Series AW-X2622**



**Sintered SUS Silencer
Series ES**



**One-touch Fittings
Series KQG2**



**Insert Fittings
Series KFG2**



**Clean one-touch
Fittings
Series KPG**



**S Coupler
Series KKA**

SMC Pneumatik GmbH

Boschring 13-15 • 63329 Egelsbach • Germany

Tel. +49 (0) 6103 402-0

info@smc.de

www.smc.de • www.smc.eu • www.smc-iac.com

YOUR AUTOMATION PARTNER



BE SURE TO REFER TO "CATALOG" AND "OPERATION MANUAL"
FOR F.R.L. PRECAUTIONS BEFORE HANDLING.

UNLESS OTHERWISE NOTED ALONG WITH A SEPARATE CONTRACT OR AGREEMENT WITHIN THE PRODUCT SPECIFICATIONS, THE SAFETY INSTRUCTIONS SPECIFIED IN THE PRODUCT CATALOG ARE APPLIED. PLEASE CONTACT YOUR LOCAL SMC SALES OFFICE FOR FURTHER DETAILS.

ORDER SPECIFICATION CODE

VHS 30 -
SINGLE ACTION

SYMBOL	THREAD TYPE	SYMBOL	PORT SIZE
NIL	RC	02	1/4
F	G	03	3/8
N	NPT	04	1/2

1

B	-						
C							
<table border="1"> <tr> <td>SYMBOL</td> <td>HANDLE MATERIAL</td> </tr> <tr> <td>B</td> <td>ALUMINUM</td> </tr> <tr> <td>C</td> <td>STAINLESS STEEL</td> </tr> </table>		SYMBOL	HANDLE MATERIAL	B	ALUMINUM	C	STAINLESS STEEL
SYMBOL	HANDLE MATERIAL						
B	ALUMINUM						
C	STAINLESS STEEL						

	—
SYMBOL	OPTIONS
NIL	—
S	BUILT-IN SILENCER (EXH. PORT)

	- X2155
SYMBOL	SEMI-STANDARD
NIL	-
R	FLOW DIRECTION:RIGHT TO LEFT
Z#1	psi AS UNIT DISPLAYED ON LABEL

*1) ONLY FOR NPT THREAD.

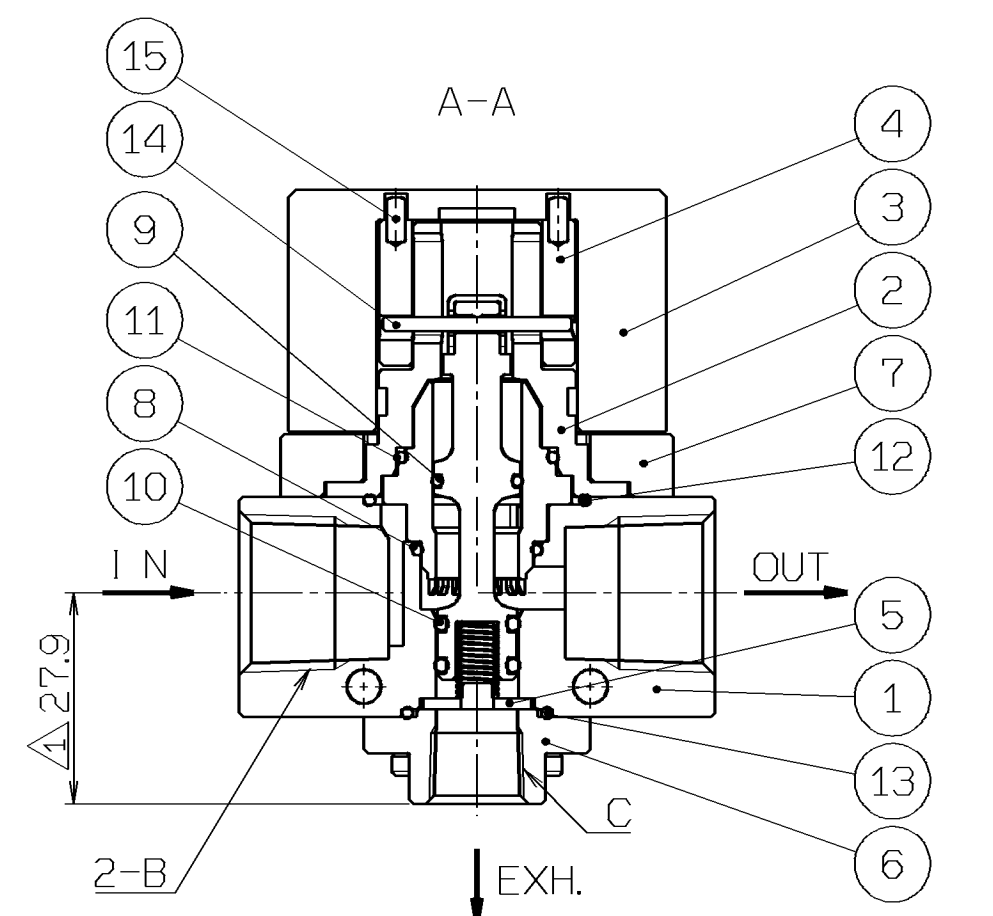
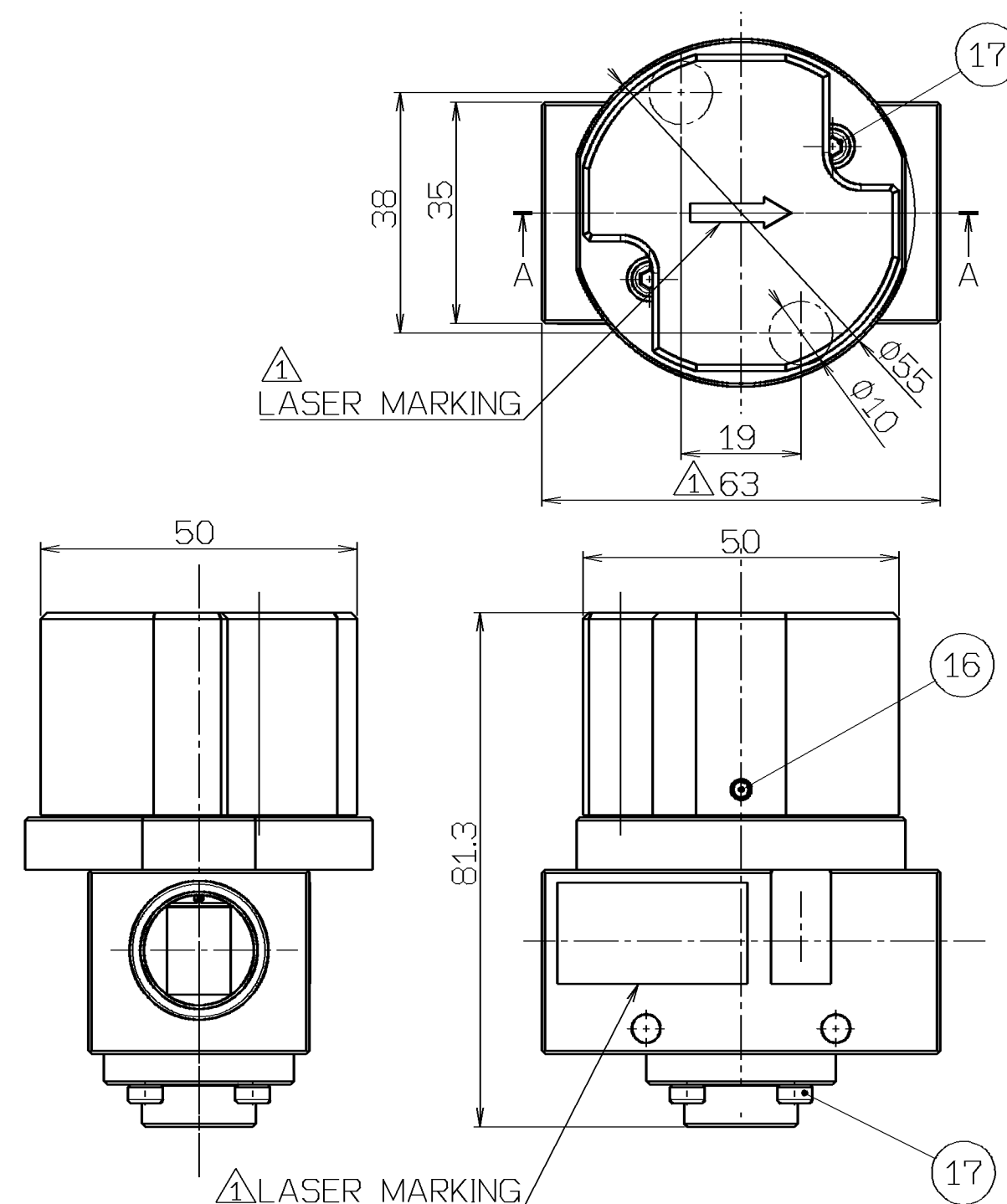
WHEN SPECIFYING MORE THAN ONE OPTION, PLEASE LIST ALPHABETICALLY.

SPECIFICATIONS

ITEM	STANDARD	
FLUID	AIR	
AMBIENT AND FLUID TEMPERATURE	° C	-5~60 (NO FREEZING)
PROOF PRESSURE	MPa	1.5
OPERATING PRESS. RANGE	MPa	0.1~1.0
HANDLE SWITCHING ANGLE	90°	

NOTE

NOTE
1. OPTION "-S" : SILENCER IS ASSEMBLED FOR SHIPPING.



WITH SILENCER(2:1)

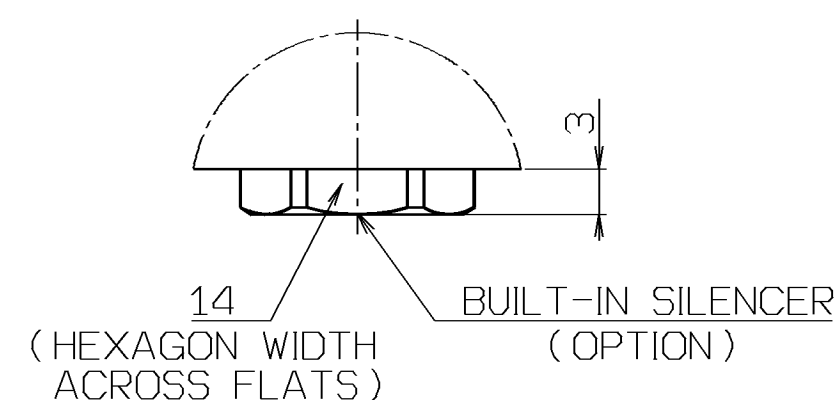


TABLE.2

MODEL NO.	③ HANDLE		
	No.	MATERIAL	TREATMENT
VHS30-(F.N)**B(-S(-R.Z)-X2155	VHS30PW-031M-X2155	ALMINIUM	CHROMATE
VHS30-(F.N)**C(-S(-R.Z)-X2155	VHS30PW-031S-X2155	STAINLESS STEEL	-

TABLE.1

	MODEL NO.	① BODY	⑥ BOTTOM BODY	PORT SIZE	
				2-B	C
	VHS30-02B.C(-S)(-R)-X2155	VHS30PW-010-02-X2155		Rc1/4	
	VHS30-03B.C(-S)(-R)-X2155	VHS30PW-010-03-X2155	VHS30PW-260-02-X2155	Rc3/8	Rc1/4
⚠	VHS30-04B.C(-S)(-R)-X2155	VHS30PW-010-04-X2155		Rc1/2	
	VHS30-F02B.C(-S)(-R)-X2155	VHS30PW-010-F02-X2155		G1/4	
	VHS30-F03B.C(-S)(-R)-X2155	VHS30PW-010-F03-X2155	VHS30PW-260-F02-X2155	G3/8	G1/4
⚠	VHS30-F04B.C(-S)(-R)-X2155	VHS30PW-010-F04-X2155		G1/2	
	VHS30-N02B.C(-S)(-R,Z)-X2155	VHS30PW-010-N02-X2155		NPT1/4	
	VHS30-N03B.C(-S)(-R,Z)-X2155	VHS30PW-010-N03-X2155	VHS30PW-260-N02-X2155	NPT3/8	NPT1/4
⚠	VHS30-N04B.C(-S)(-R,Z)-X2155	VHS30PW-010-N04-X2155		NPT1/2	

①	17	CA01110	HEXAGON SOCKET HEAD CAP SCREW	STAINLESS STEEL	8	M3x10
	16	BA00665	HEXAGON SOCKET SET SCREW LONG DOG POINT	STAINLESS STEEL	2	M3x12
	15	GB00039	PARALLEL PIN	STAINLESS STEEL	2	2.5x6
	14	VHS30PW-110-6	PARALLEL PIN	STAINLESS STEEL	1	
①	13	KA00195	"O"RING	FKM	1	20x1.5W
①	12	KA01491	"O"RING	FKM	1	27x1.5W
①	11	KA02164	SLEEVE"O"RING	FKM	1	
①	10	VHS30PW-101-2	SPOOL"O"RING B	FKM	2	
①	9	VHS30PW-090-2	SPOOL"O"RING A	FKM	1	
①	8	VHS30PW-080-2	BONNET "O"RING	FKM	1	
CFR	7	VHS30PW-270-X2155		STAINLESS STEEL	1	
	6	REFER TO TABLE.1		STAINLESS STEEL	1	
	5	VHS30PW-250-X2155		STAINLESS STEEL	1	
	4	VHS30PW-041-X2155	CAM RING	BRASS	1	
	3	REFER TO TABLE.2	HANDLE	-	1	
	2	VHS30PW-021M-X2155	BONNET	STAINLESS STEEL	1	
	1	REFER TO TABLE.1	BODY	STAINLESS STEEL	1	

ITEM		PART NO		PART NAME		MATERIAL		QTY	REMARKS
△						FINISH	-		
△		CHANGE: NOTE				PAINT	-		
△		KA00368-KA01491.53-63.29.4+27.9				MASS	-		
△		AA00055-CA01110KA00294-KA00195				PACKING	-		
△	16	ADD:04-T-RING:4PeaceLASER MARKING		2017-03-14	K.Sahashi	V#:-DMU0491			
△	-	INITIAL RELEASE		2015-11-04	K.Matsushita	-			
REV	QTY	DESCRIPTION		DATE	PREPARED	REV NO	MATERIAL	MODEL	QTY
TOLERANCES JIS B 0405				DRAWN MSuzuki		SCALE FREE		THIRD ANGLE	
RANGE (mm)		GRADE		DATE		DWG NAME			
0.5 ≤ D ≤ 3		F ± 0.1	C ± 0.2	2017-03-14		3PORT HAND VALVE			
3 < D ≤ 6		0.05 ± 0.1	0.3 ± 0.3	DESIGNED K.Sahashi		DWG NO			
6 < D ≤ 30		0.1 ± 0.2	0.5 ± 0.5	DATE 2017-03-14		① VHS30-(F,N)**B,C(-S)(-R,Z)-X2155			
30 < D ≤ 120		0.15 ± 0.3	0.8 ± 0.8	CHECKED		REVISION			
120 < D ≤ 400		0.2 ± 0.5	1.2 ± 1.2	DATE		①			
400 < D ≤ 1000		0.3 ± 0.8	2 ± 2	APPROVED T.Wada					
1000 < D ≤ 2000		0.5 ± 1.2	3 ± 3	DATE 2017-03-14					

FINISH: 表面处理 / PAINT: 塗装 / MASS: 質量
PACKING: 包装区分 / MATERIAL: 材質
MATERIAL SIZE: 材料寸法

NO.	DWG NAME
1	1
2	2
3	3
4	4
5	5
6	6
7	7
8	8
9	9
10	10
11	11
12	12
13	13
14	14
15	15
16	16
17	17
18	18
19	19
20	20
21	21
22	22
23	23
24	24
25	25
26	26
27	27
28	28
29	29
30	30
31	31
32	32
33	33
34	34
35	35
36	36
37	37
38	38
39	39
40	40
41	41
42	42
43	43
44	44
45	45
46	46
47	47
48	48
49	49
50	50
51	51
52	52
53	53
54	54
55	55
56	56
57	57
58	58
59	59
60	60
61	61
62	62
63	63
64	64
65	65
66	66
67	67
68	68
69	69
70	70
71	71
72	72
73	73
74	74
75	75
76	76
77	77
78	78
79	79
80	80
81	81
82	82
83	83
84	84
85	85
86	86
87	87
88	88
89	89
90	90
91	91
92	92
93	93
94	94
95	95
96	96
97	97
98	98
99	99
100	100

	DWG REC
--	---------

DWG ID	AC54311602
--------	------------

SMC Corporation

