

Series VQ100

How to Order Manifold

Plug Lead Unit Manifold

Applicable Solenoid Valve (Plug lead style)
 VQ1□0□-□L
 VQ1□0□-□M
 VQ1□0□-□G

Note) Normally closed and normally open style cannot be mounted on the same manifold.

VV3Q1 2 08 01N

Series

1	VQ100
---	-------

Manifold base

2	Plug lead unit
2U	Plug lead unit U type (large flow capacity) mounting base

Stations

02	2 stations
⋮	⋮
20	20 stations

Port size* and thread

—	M5, Rc(PT)1/8
01N	NPT1/8
01T	NPTF1/8
01F	G(PF)1/8

* Only thread port size 1/8 style (2U type, P/E port) has choice of thread.

How to Order Manifold Assembly

Suffix valve and option numbers for the manifold base No.

(Example)
 Plug lead unit manifold with cable (3m)
VV3Q12-05 1 set Manifold base No.
 * **VQ110-5L** 4 sets Valve No. (1st to 4th stations)
 * **VVQ100-10A-2** 1 set Blank plate part No. (5th station)

Place "*" in front of the part No. of solenoid valve which is to be mounted.

Write sequentially from the 1st station on the D side.

How to Order Valve

Series VQ Compact 3port valve

VQ1 1 0 □ - 5 L □

Actuation

1	Normally close
2	Normally open

Functions

—	Standard (1W)
H	High pressure (1.5W)
Y ⁽¹⁾	Low wattage (0.5W)
L*	Latching
N*	Negative COM
U*	Large flow capacity

*: Option
 Note) Except for latching and large flow capacity style.

Coil rated voltage

1	100V AC (50/60Hz)
2	200V AC (50/60Hz)
3	110V AC (50/60Hz)
4	220V AC (50/60Hz)
5	24V DC
6	12V DC
9	Other

Consult SMC for other voltages.

Manual override

—	Non-locking push flush style
	Latching type: Looking-push slotted style
B*	Locking slotted style

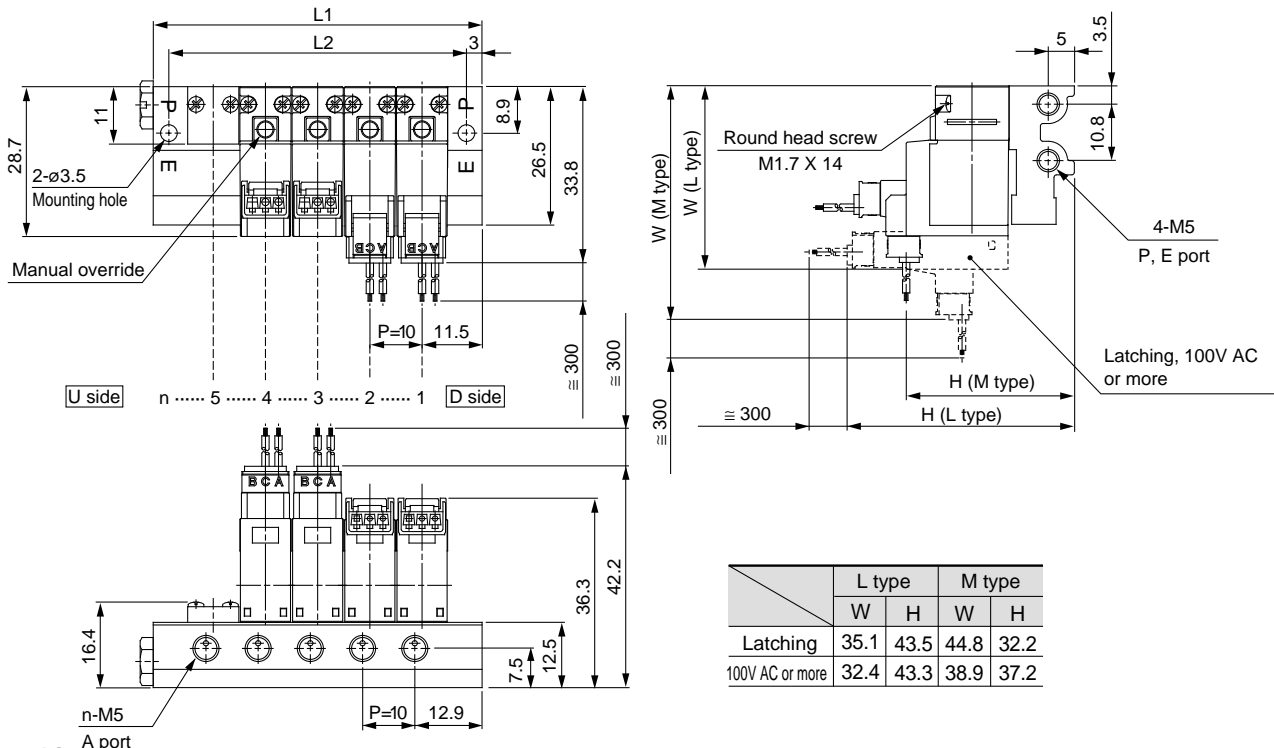
*: Option
 Note) Latching manual override: Looking-push style only.

Electrical entry

L	L plug connector, With lead wire and light/surge voltage suppresser
LO	L plug connector, Without connector, With indicator light and surge voltage suppresser
M	M plug connector, With lead wire and light/surge voltage suppresser
MO	M plug connector, Without connector, With light/surge voltage suppresser
G	Grommet

Note) Grommet: No AC and large flow capacity style.

Plug Lead Unit Manifold (VV3Q12)

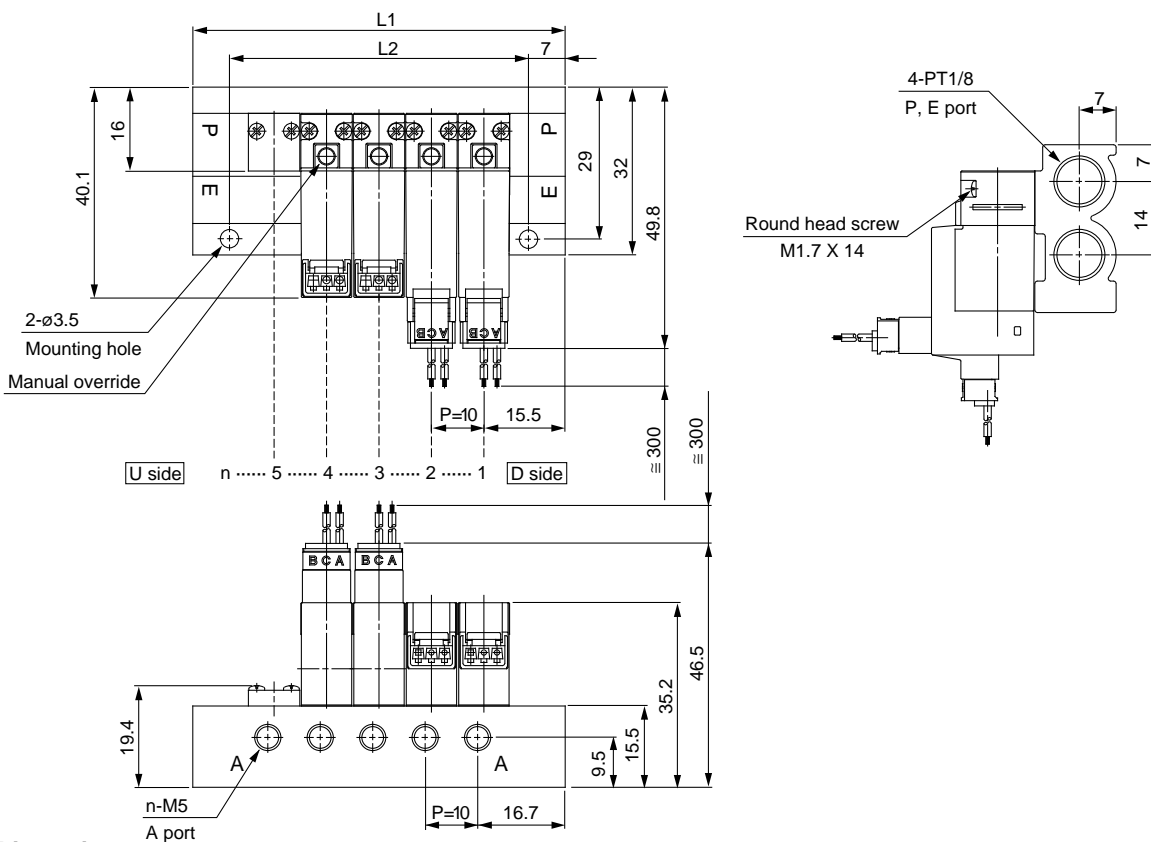


Dimensions

Equation: $L1=10n+13$ $L2=10n+7$ n: Station (Max. 20 stations)

L \ n	1	2	3	4	5	6	7	8	9	10	11	12	13	14	15	16	17	18	19	20
L1	23	33	43	53	63	73	83	93	103	113	123	133	143	153	163	173	183	193	203	213
L2	17	27	37	47	57	67	77	87	97	107	117	127	137	147	157	167	177	187	197	207

Plug Lead Unit U Type (Large Flow Capacity) Mounted Manifold (VV3Q12U)



Dimensions

Equation: $L1=10n+21$ $L2=10n+7$ n: Station (Max. 20 stations)

L \ n	1	2	3	4	5	6	7	8	9	10	11	12	13	14	15	16	17	18	19	20
L1	31	41	51	61	71	81	91	101	111	121	131	141	151	161	171	181	191	201	211	221
L2	17	27	37	47	57	67	77	87	97	107	117	127	137	147	157	167	177	187	197	207

- SY
- SYJ
- VK
- VZ
- VT
- VT
- VP
- VG
- VP

- VQ
- VQZ
- VZ
- VS