

Vacuum / Release Unit

Series VQD1000-V

How to Order

Vacuum / Release Unit

VQD1000-V 05 5

Volume of release air tank: V2

Nil	0.8 cm ³	Guideline: 1 m or shorter distanced from a work piece
L	3.2 cm ³	Guideline: 1 m or longer distanced from a work piece

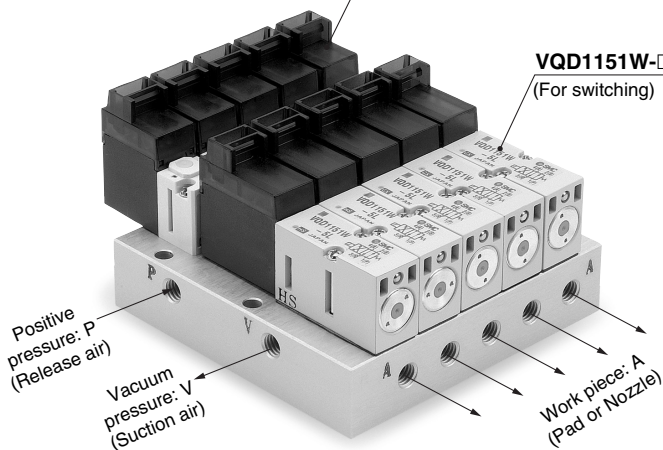
Note) Calculate according to the related formula between pressure and a release air tank on front matter 1, and select either one.

Stations

01	1 unit (1 station)
02	2 units (2 stations)
⋮	⋮
10	10 units (10 stations)

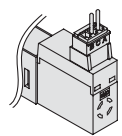
10-VQ110-□-X46
(For charging release air)

VQD1151W-□
(For switching)

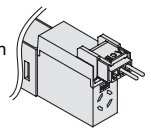


Electrical entry

Nil: L plug connector
* Standard type



M: M plug connector
* Performances in valve installation/de-installation and handling of a connector is less ensured.

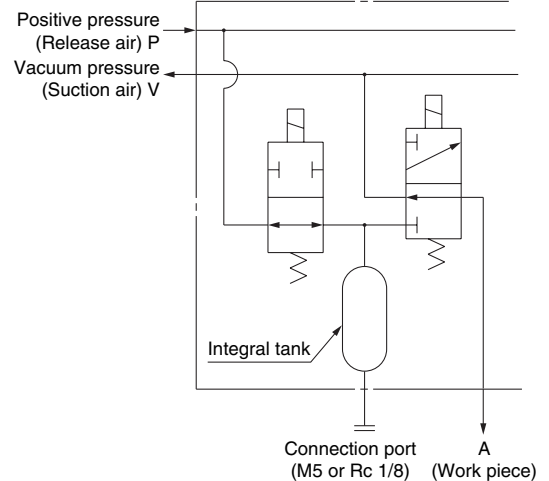


Voltage

5	24 VDC
6	12 VDC

JIS Symbol

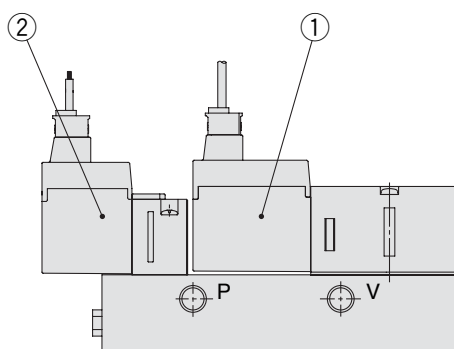
10-VQ110-□-X46 (For charging release air) VQD1151W-□ (For switching)



Specifications

Valve specifications	Valve construction		Direct operated poppet valve
	Fluid		Air, Inert gas/Low ozone resistant product
	Operating pressure range	Suction (negative pressure)	0 to -100 kPa
		Release (positive pressure)	0 to 0.7 MPa
	Response time	Suction (OFF)	2 1 msec
		Release (ON)	4 1 msec
	Suction flow rate/Sonic conductance		16 l/min/0.27 dm ³ /(s·bar)
	Manual override		Non-locking push type
	Shock/Vibration resistance		150/30 m/s ²
	Mounting position		Unrestricted
Enclosure		Dusttight	
Electric specifications	Coil rated voltage		24 VDC, 12 VDC
	Allowable rated voltage		10% of rated voltage
	Coil insulation type		Class B or equivalent
	Power consumption	VQD1151W (for switching)	3.2 W energy saving type (Inrush: 3.2 W, Holding: 2.4 W)
		10-VQ110 (for release supply)	1 W
	Electrical entry		L/M plug connector (with light/surge voltage suppressor)

Replacement Parts



① Solenoid valve for switching

VQD1151W-5 L

Voltage		Electrical entry	
5	24 VDC	L	L plug connector
6	12 VDC	M	M plug connector

② Solenoid valve for charging release air

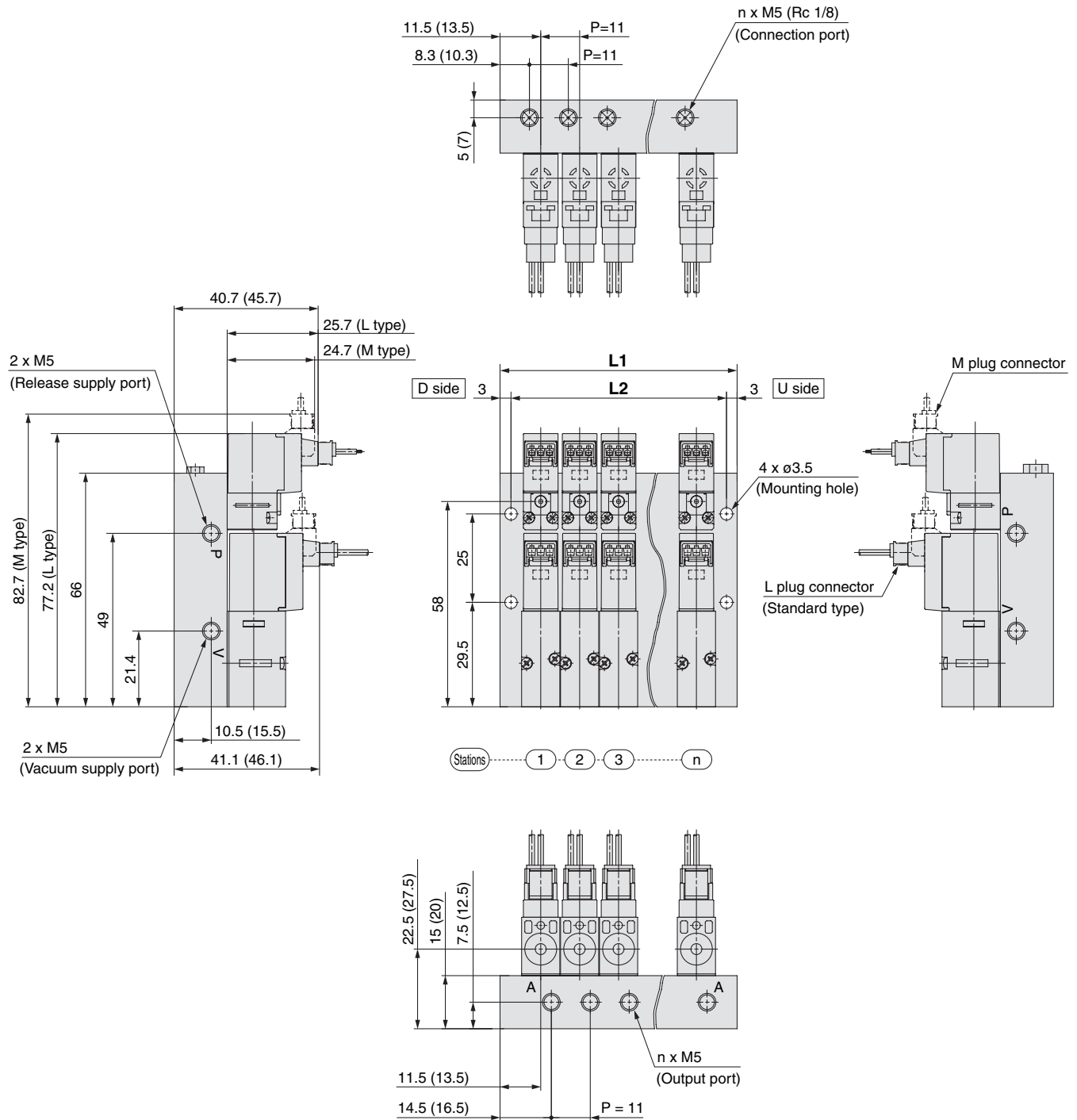
10-VQ110-5 L-X46

Voltage		Electrical entry	
5	24 VDC	L	L plug connector
6	12 VDC	M	M plug connector

Note) Product with specification on pressurizing R port.
If a standard product is used, external leakage may occur.

Series VQD1000-V

Replacement Parts



L: Dimensions (VQD1000-V-□□ / Standard type: Tank volume 0.8 cm³)

L \ n	1	2	3	4	5	6	7	8	9	10
L1	23	34	45	56	67	78	89	100	111	122
L2	17	28	39	50	61	72	83	94	105	116

Formula: L1 = 11n + 12, L2 = 11n + 6 (Max. 10 stations)

L: Dimensions (VQD1000-VL-□□ / Tank volume 3.2 cm³)

L \ n	1	2	3	4	5	6	7	8	9	10
L1	25	36	47	58	69	80	91	102	113	124
L2	19	30	41	52	63	74	85	96	107	118

Formula: L1 = 11n + 14, L2 = 11n + 8 (Max. 10 stations)

The dimensions shown in brackets indicate the VQD1000-VL-□□ / tank volume 3.2 cm³.