

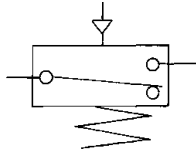
Related Products VR3200/3201

Pneumatic-Electric Relay

Pneumatic-electric relay converts pneumatic signal to electric relay.



JIS Symbol



⚠ Precautions

Be sure to read before handling.
Refer to 0-33 to 0-36 for Safety Instructions and common precautions.

Piping

⚠ Warning

① When connecting a pipe fitting to the IN port, place the wrench over the hexagon portion of the lid.
If the wrench is placed over the microswitch body, the neck of the microswitch could break.

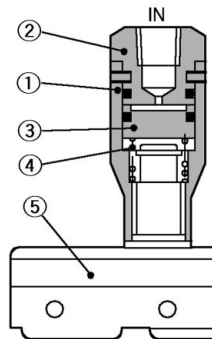
Model/Specifications

	VR3200-01	VR3201-01
Construction	—	Closed terminal (with protect case)
Weight	130g	260g
Operating pressure	0.1 to 1.0MPa	
Ambient and fluid temperature	-5 to 60°C (No freezing)	
Contacts	1ab	
Port size (Nominal size)	Rc(PT)1/8 (6A)	

Micro Switch Rating

Voltage	Non-inductive load (A)				Inductive load (A)			
	Resistance load		Light load		Inductive load		Electric motor load	
	N.C.	N.O.	N.C.	N.O.	N.C.	N.O.	N.C.	N.O.
AC125V	15	15	4	2	10	10	4	2
AC250V	15	15	3	1.5	10	10	3	1.5
DC8V	15	15	3	1.5	15	15	5	2.5
DC14V	15	15	3	1.5	10	10	5	2.5
DC30V	6	6	3	1.5	5	5	5	2.5
DC125V	0.5	0.5	0.3	0.3	0.05	0.05	0.05	0.05
DC250V	0.25	0.25	0.2	0.2	0.03	0.03	0.03	0.03

Construction



Component Parts

No.	Description	Material	Notes	No.	Description	Material	Notes
①	Body	Brass		④	Spring	Stainless steel	
②	Cap	Brass		⑤	Micro switch		Contacts 1ab
③	Piston	Polyacetal					

Dimensions

