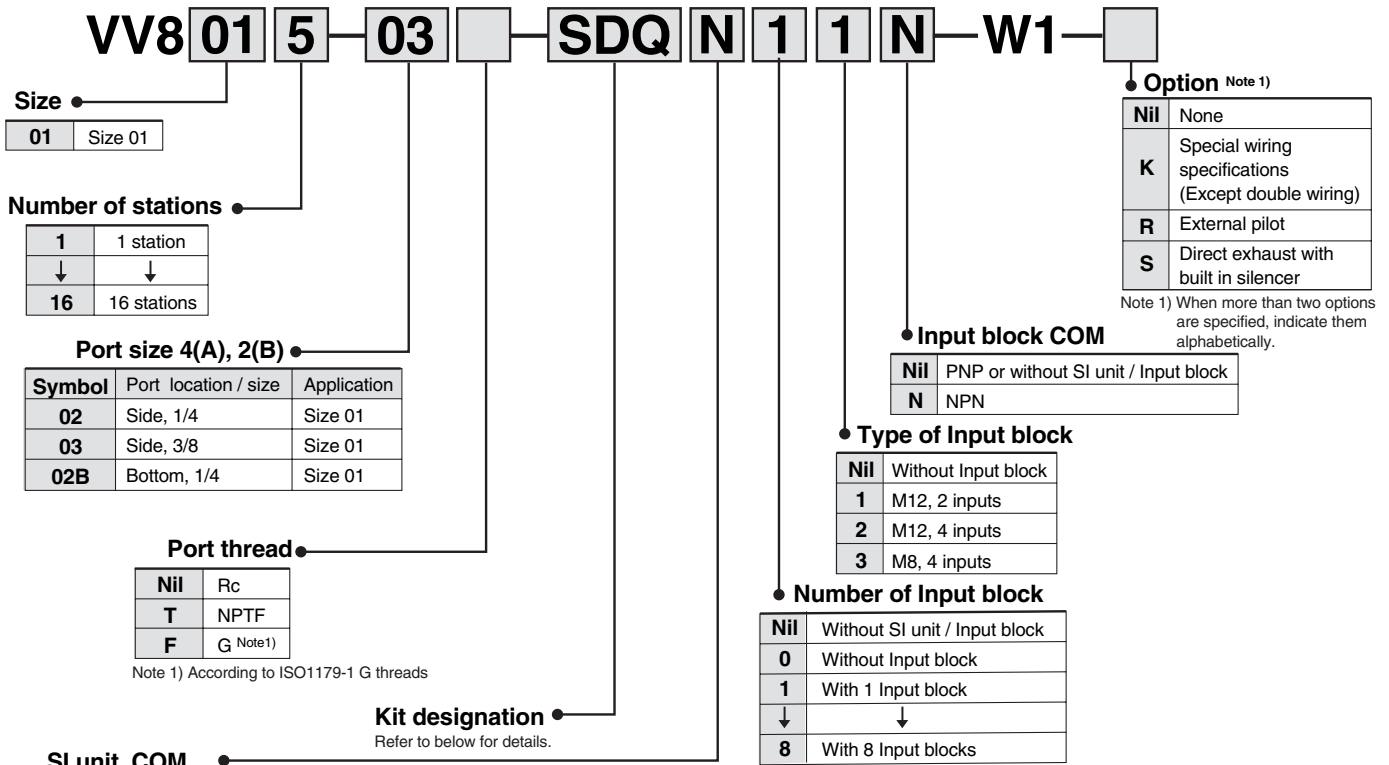


How to Order Manifold (ISO15407-2)



SI unit COM	EX250						EX500		EX126
	DeviceNet	PROFIBUS-DP	CC-Link	AS-i	CANopen	EtherNet/IP	DeviceNet EtherNet/IP PROFIBUS-DP CC-Link	Remote I/O	CC-Link
Nil +COM	—	—	○	—	—	—	○	○	○
N -COM	○	○	○	○	○	○	○	○	○

Kit designation

Kit	Kit / Cable length	Max. number of stations Note 1)	Max. number of solenoids Note1)	Applicable SI unit	
F kit	FD0	D-sub connector kit (25P) without cable	1 to 12 stations (16 stations)	24	
	FD1	D-sub connector kit (25P) with 1.5m cable			
	FD2	D-sub connector kit (25P) with 3.0m cable			
	FD3	D-sub connector kit (25P) with 5.0m cable			
P kit	PD0	Flat ribbon cable kit (26P) without cable	1 to 12 stations (16 stations)	24	
	PD1	Flat ribbon cable kit (26P) with 1.5m cable			
	PD2	Flat ribbon cable kit (26P) with 3.0m cable			
	PD3	Flat ribbon cable kit (26P) with 5.0m cable			
L kit	LD0	Lead wire kit (25 core) 0.6m lead wire	1 to 12 stations (16 stations)	24	
	LD1	Lead wire kit (25 core) 1.5m lead wire			
	LD2	Lead wire kit (25 core) 3.0m lead wire			
M kit	MD0	Multiple connector kit (26P) without cable	1 to 12 stations (16 stations)	24	
	MD1	Multiple connector kit (26P) with 1.5m cable			
	MD2	Multiple connector kit (26P) with 3.0m cable			
	MD3	Multiple connector kit (26P) with 5.0m cable			
T kit	TD0	Terminal block box kit	1 to 10 stations (16 stations)	20	
S kit	SD0	Serial kit without SI unit	1 to 12 stations (16 stations)	24	
	SDN	Serial kit for PROFIBUS-DP			
	SDQ	Serial kit for DeviceNet			
	SDQ1	Serial kit for DeviceNet			
	SDTA	AS-i, 8 in/out, 31 slave modes, 2 power supply systems			
	SDTB	AS-i, 4 in/out, 31 slave modes, 2 power supply systems	1 to 4 stations (8 stations)	8	EX250-SPR1
	SDTC	AS-i, 8 in/out, 31 slave modes, 1 power supply systems	1 to 2 stations (4 stations)	4	EX250-SDN1 Note 2)
	SDTD	AS-i, 4 in/out, 31 slave modes, 1 power supply systems	1 to 4 stations (8 stations)	8	EX250-SDN1-X102 Note 3)
	SDV	Serial kit for CC-Link	1 to 2 stations (4 stations)	4	EX250-SAS3
	SDY	Serial kit for CANopen	1 to 2 stations (4 stations)	4	EX250-SAS5
	SDA1	Serial kit for Remote I/O	1 to 12 stations (16 stations)	24	EX250-SAS7
	SDA2	Serial kit for DeviceNet, PROFIBUS-DP, CC-Link, EtherNet/IP	1 to 12 stations (16 stations)	24	EX250-SAS9
	SDVB	Serial kit for CC-Link (EX126)	1 to 12 stations (16 stations)	24	EX250-SMJ2
	SDZEN	Serial kit for EtherNet/IP	1 to 12 stations (16 stations)	24	EX250-SCA1
					EX500-Q001-X1/EX500-Q101-X1
				EX500-Q001/EX500-Q101	
				EX126D-SMJ1	
				EX250-SEN1	

Note 1) The numeral in parentheses indicates the maximum number of stations in case of special wiring specification. The maximum number of manifold stations is determined by the number of solenoids. Count 1 point for a single solenoid type and 2 points for a double solenoid type. Determine the number of stations so that the total number solenoids are not more than the maximum points. In case of special wiring specification, put the option symbol "K".

Note 2) 4 byte input / 4 byte output

Note 3) 6 byte input / 4 byte output, corresponding to status bit for valve power supply / Input power supply

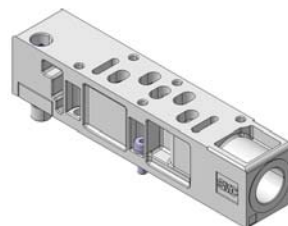
Series VSR/VSS8-4

Manifold Option

Individual SUP spacer: **VV801-P-03** 

Thread type ●

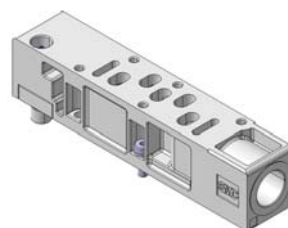
Nil	PT (Rc)
N	NPT
T	NPTF
F	G




Individual EXH spacer: **VV801-R-03** 

Thread type ●

Nil	PT (Rc)
N	NPT
T	NPTF
F	G



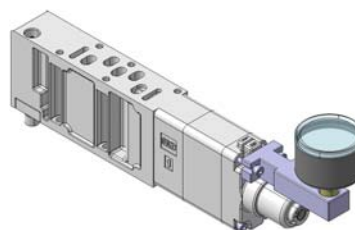
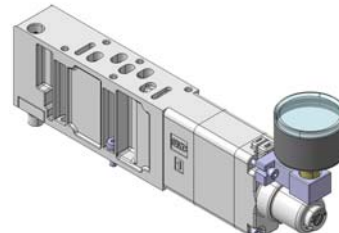
Interface regulator: **VVS8040-ARB-**  **-1-X1S**

Regulation type ●

P	P port
A	A port
B	B port

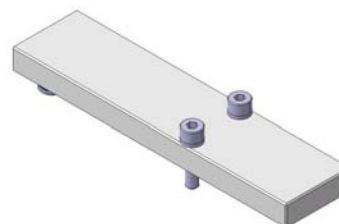
Pressure gauge adapter ●

X1S	Short
X1L	Long



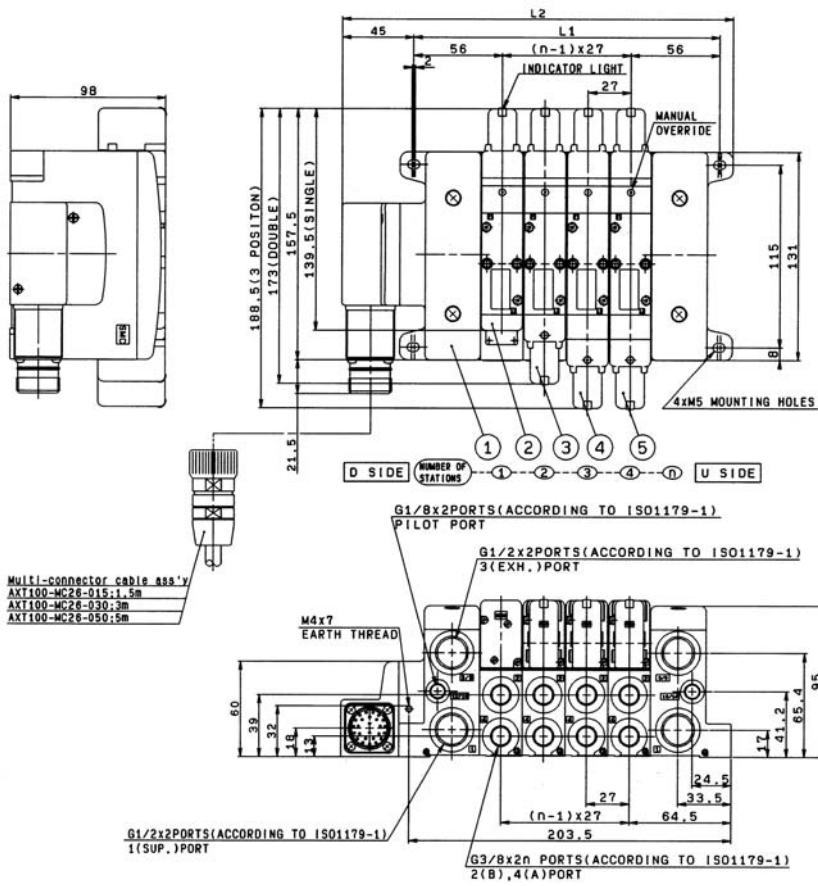
* Pressure gauge indication unit: Bar/Psi

Blanking plate: **VVS8040-11A**



Dimensions

VV801□ - □F-MDO



Series VSR/S8-4, 8-2

Dimensions

VV801□ - □F-SDGN

