

Series VCA

How to Order Manifold (VCA20)

VV2C A 2 - 02 02

For air

Series

2	Class 2
---	---------

Stations

02	2 stations
:	:
10	10 stations

OUT port size

02	1/4 (8A)
----	----------

Thread type

Nil	Rc
F	G
N	NPT
T	NPTF

Electrical entry

Nil	Grommet, Conduit, DIN
T	Conduit terminal

IN port direction

Nil	Side
A	Front

How to Order Manifold Assembly

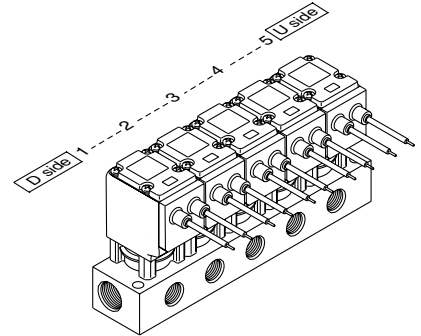
Enter the mounting valve and option part numbers under the manifold base part number.

<Ordering Example>

VV2CA2-0502 1 set Manifold part no.
 * VCA23-5G-3 5 sets Valve part no.
 (Stations 1 to 5)

"*" is the symbol for assembly. Add an "*" in front of the part numbers for solenoid valves, etc., to be mounted.

Enter together in order, counting from station 1 on the D side.



How to Order Valves (VCA20)

VC A 2 3 - 1 G - 3

For air

Series

2	Class 2
---	---------

Valve type

3	N.C. for manifold
---	-------------------

Fluid

Nil	General air
A	Dry air

Orifice size

Symbol	Orifice size (mmØ)
3	3
5	5

Manual override

Nil	None
B	Slotted locking type (tool required)

Electrical entry

G	Grommet
C	Conduit
T	Conduit terminal
TL	Conduit terminal with indicator light
D	DIN terminal
DL	DIN terminal with indicator light
DO	DIN terminal (without connector)

Voltage

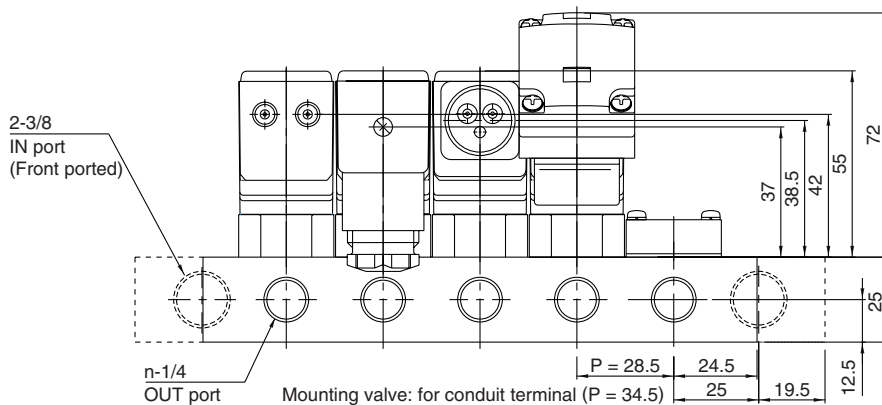
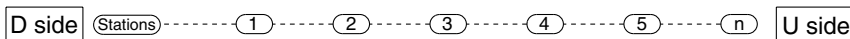
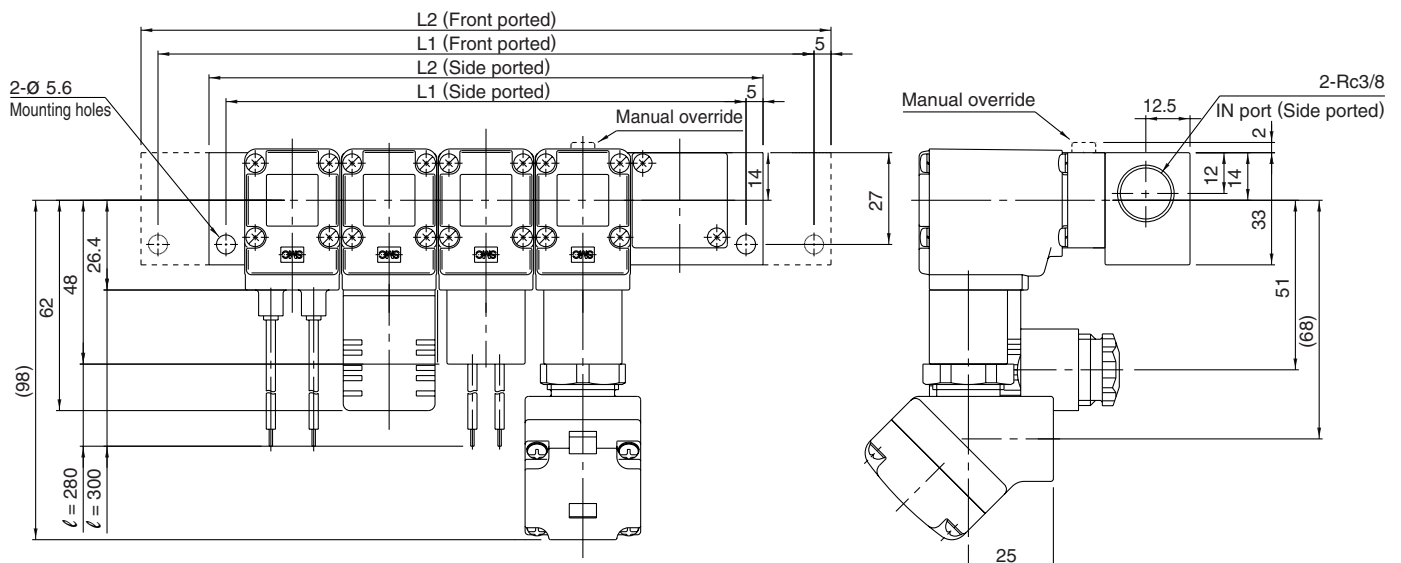
1	100 VAC
2	200 VAC
3	110 VAC
4	220 VAC
5	24 VDC
6	12 VDC
36	230 VAC

* Please consult with SMC regarding other voltages.

* All types equipped with surge voltage suppressor.

Series VCA

Dimensions: VCA20 Manifold



Side ported: L1 = n x 28.5 + 10.5 L2 = n x 28.5 + 20.5
 Front ported: L1 = n x 28.5 + 50.5 L2 = n x 28.5 + 60.5 (mm)

IN port direction	L	n	2	3	4	5	6	7	8	9	10
Side ported	L1		67.5	96	124.5	153	181.5	210	238.5	267	295.5
	L2		77.5	106	134.5	163	191.5	220	248.5	277	305.5
Front ported	L1		107.5	136	164.5	193	221.5	250	278.5	307	335.5
	L2		117.5	146	174.5	203	231.5	260	288.5	317	345.5

(When the electrical entry of a valve to be mounted is conduit terminal.)

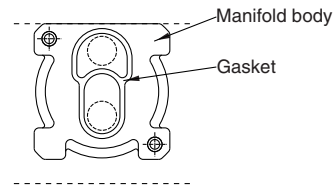
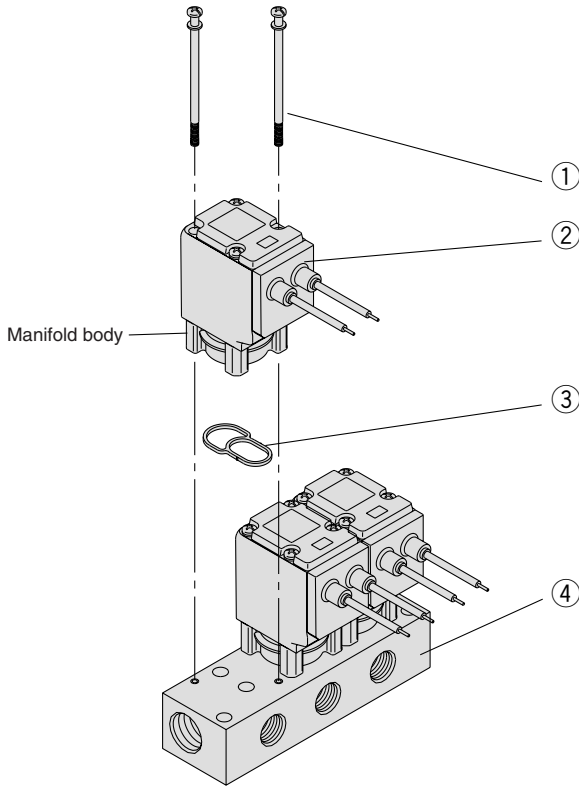
Side ported: L1 = n x 34.5 + 4.5 L2 = n x 34.5 + 14.5
 Front ported: L1 = n x 34.5 + 44.5 L2 = n x 34.5 + 54.5 (mm)

IN port direction	L	n	2	3	4	5	6	7	8	9	10
Side ported	L1		73.5	108	142.5	177	211.5	246	280.5	315	349.5
	L2		83.5	118	152.5	187	221.5	256	290.5	325	359.5
Front ported	L1		113.5	148	182.5	217	251.5	286	320.5	355	389.5
	L2		123.5	158	192.5	227	261.5	296	330.5	365	399.5

Series VCA

Manifold Exploded View

Series VCA20



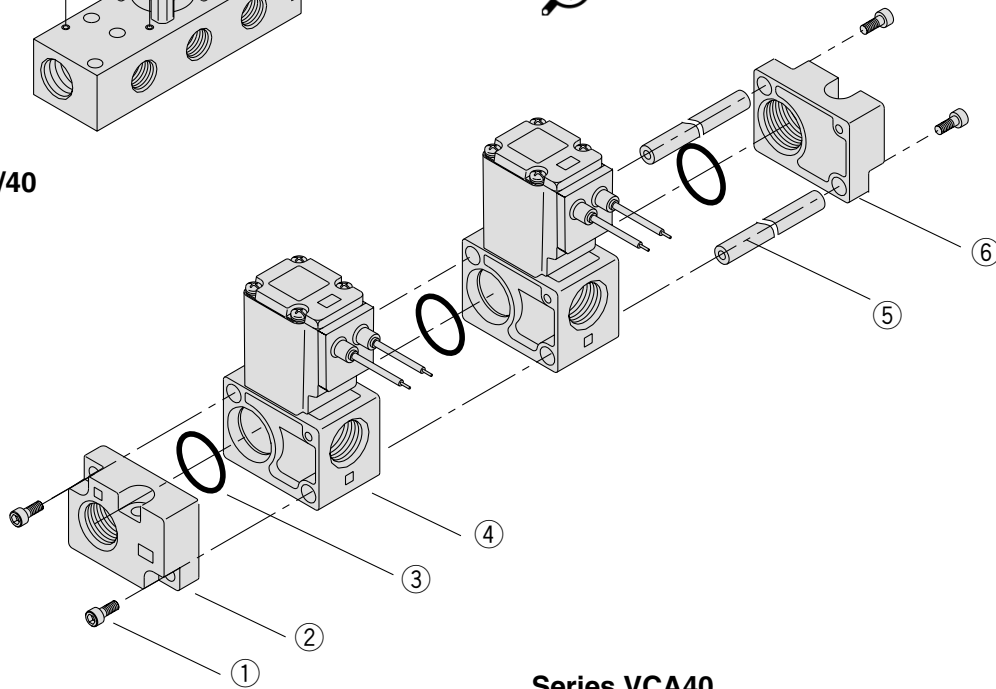
Manifold base A port side

Mounting orientation exists when mounting valves onto manifold base. Mount it as shown above.

No.	Part no.	Description	Material
①	M3 x 57	Cross-recessed head machine screw	Steel
②	VCA23□-□□□-□	Valve for manifold ⁽¹⁾	
③	VVCA20-3-1	Gasket	HNBR
④	VV2CA2-□□□-□	Manifold base	Aluminum

Note 1) Gasket ③ is included with manifold valve ②.

Series VCA30/40



Series VCA30

No.	Part no.	Description	Material
①	AXT632-69-1	Mounting screw (side port)	Steel
	AXT632-69-2	Mounting screw (front port)	
②	VVCA30-3A-04-2	End plate assembly (D side, side port)	Aluminum
	VVCA30-3A-04-1	End plate assembly (D side, front port)	
③	OR-2200-200-H	O-ring (for VCA30)	HNBR
④	VCA35□-□□□-□□	Manifold valve ⁽²⁾	
⑤	VVCA30-6-n	Tie-rod	Steel
⑥	VVCA30-4A-04-2	End plate assembly (U side, side port)	Aluminum
	VVCA30-4A-04-1	End plate assembly (U side, front port)	

Note 2) O-ring ③ is included with manifold valve ④.

Series VCA40

No.	Part no.	Description	Material
①	AXT632-69-1	Mounting screw (side port)	Steel
	AXT632-69-2	Mounting screw (front port)	
②	VVCA40-3A-06-2	End plate assembly (D side, side port)	Aluminum
	VVCA40-3A-06-1	End plate assembly (D side, front port)	
③	OR-3200-200-H	O-ring (for VCA40)	HNBR
④	VCA45□-□□□-□□	Manifold valve ⁽²⁾	
⑤	VVCA40-6-n	Tie-rod	Steel
⑥	VVCA40-4A-06-2	End plate assembly (U side, side port)	Aluminum
	VVCA40-4A-06-1	End plate assembly (U side, front port)	

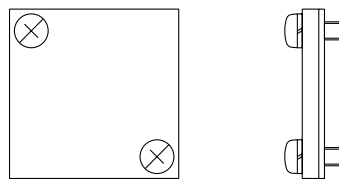
Note 2) O-ring ③ is included with manifold valve ④.

Manifold Option Parts

Blanking plate assembly (VCA20)

VVCA20 - 4A

This is used when a blanking plate is mounted on a manifold as preparation for a planned valve installation. (With gasket, 2 mounting screws)

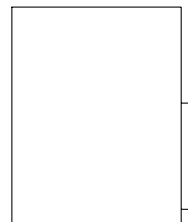


Blanking block assembly (VCA30, 40)

VVCA 3 0 - 2A - 00

3	Series VCA30
4	Series VCA40

This is used when a blanking plate is mounted on a manifold as preparation for a planned valve installation. (With O-ring)

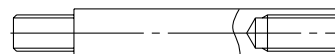


Tie-rod for additional stations (Set of 2 pcs for 1 station) (VCA30, 40)

VVCA 3 0 - 6 - 1A

3	Series VCA30
4	Series VCA40

Mounted on the tie-rod when adding one station.



VC□

VDW

VQ

VX2

VX□

VX3

VXA

VN□

LVC

LVA

LVH

LVD

LVQ

LQ

LVN

TI/
TIL

PA

PAX

PB