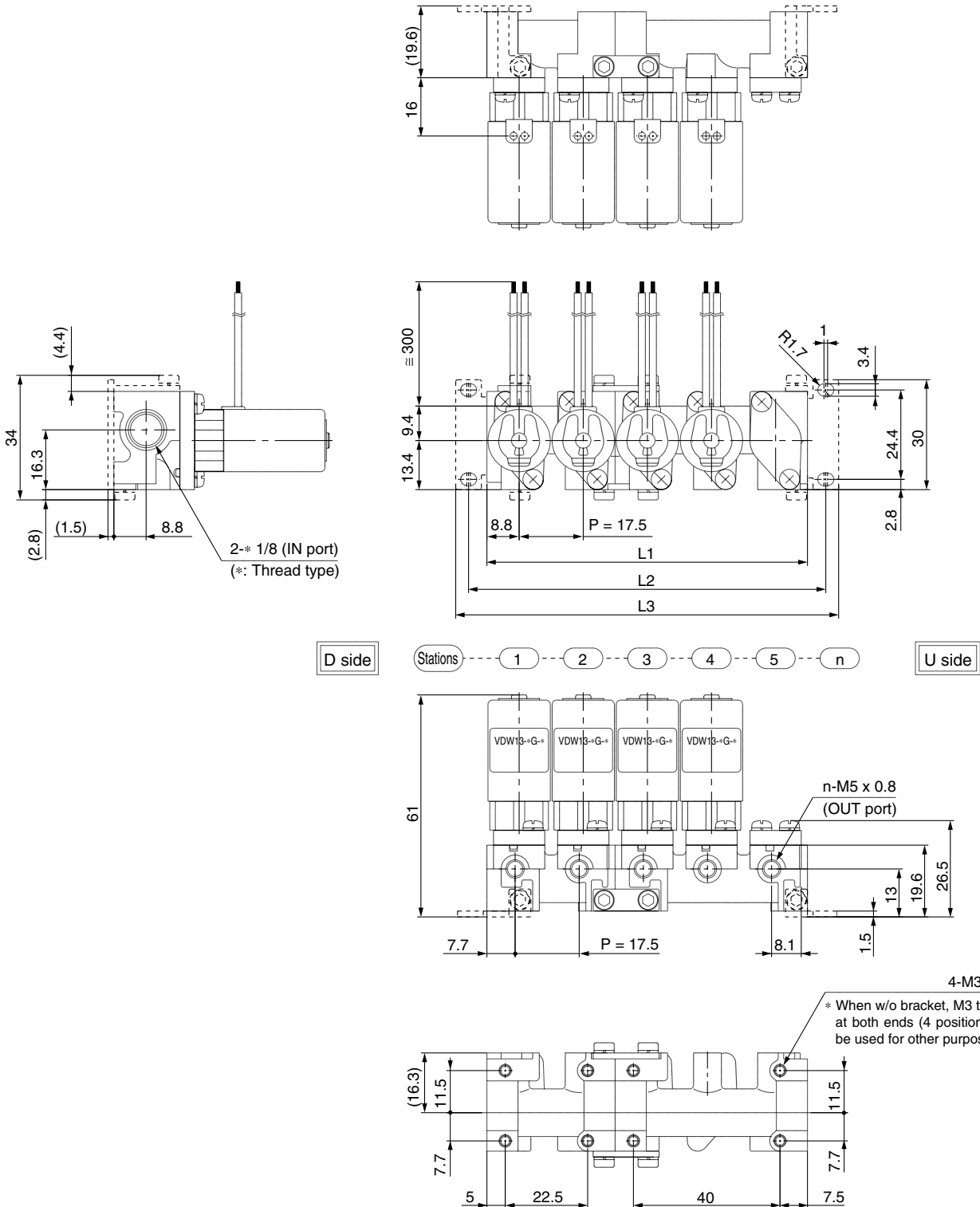


Compact Direct Operated 2 Port Solenoid Valve For Water and Air Series VDW10/20/30

Dimensions

VV2DW1



- VC
- VDW**
- VQ
- VX2
- VX3
- VXA
- VN
- LVC
- LVA
- L VH
- LVD
- LVQ
- LQ
- LVN
- TI/
TIL
- PA
- PAX
- PB

L Dimension

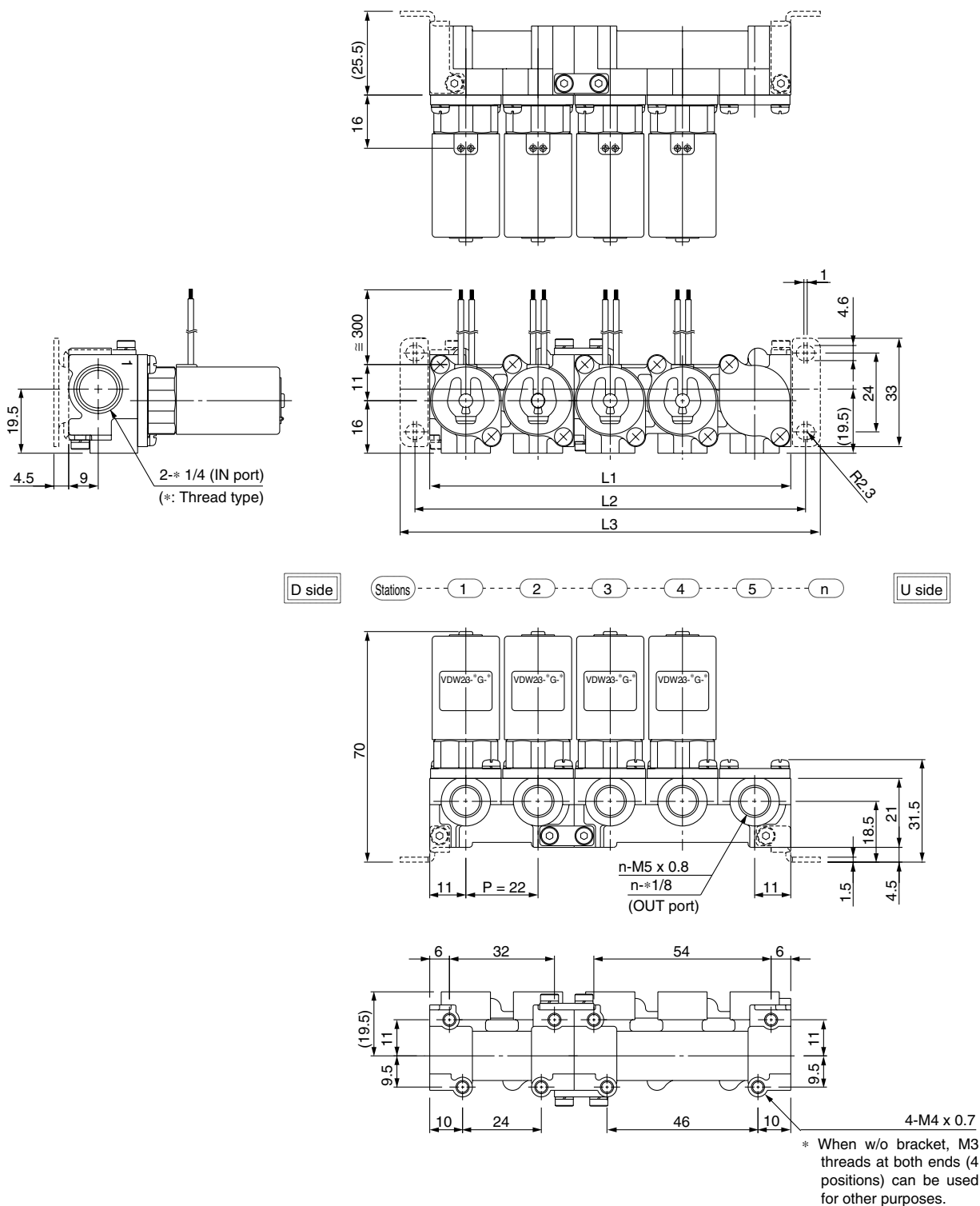
Dimension	n (stations)								
	2	3	4	5	6	7	8	9	10
L1	35	52.5	70	87.5	105	122.5	140	157.5	175
L2	45	62.5	80	97.5	115	132.5	150	167.5	185
L3	52	69.5	87	104.5	122	139.5	157	174.5	192
Manifold composition	2 stns. x 1	3 stns. x 1	2 stns. x 2	2stns. + 3stns.	3 stns. x 2	2 stns. x 2 + 3 stns.	2 stns. + 3 stns. x 2	3 stns. x 3	2 stns. x 2 + 3 stns. x 2

Note) Manifold base is consisted of the junction of 2 and 3 station bases.
Refer to pages 17-2-72/73 regarding manifold additions.

Series VDW10/20/30

Dimensions

VV2DW2



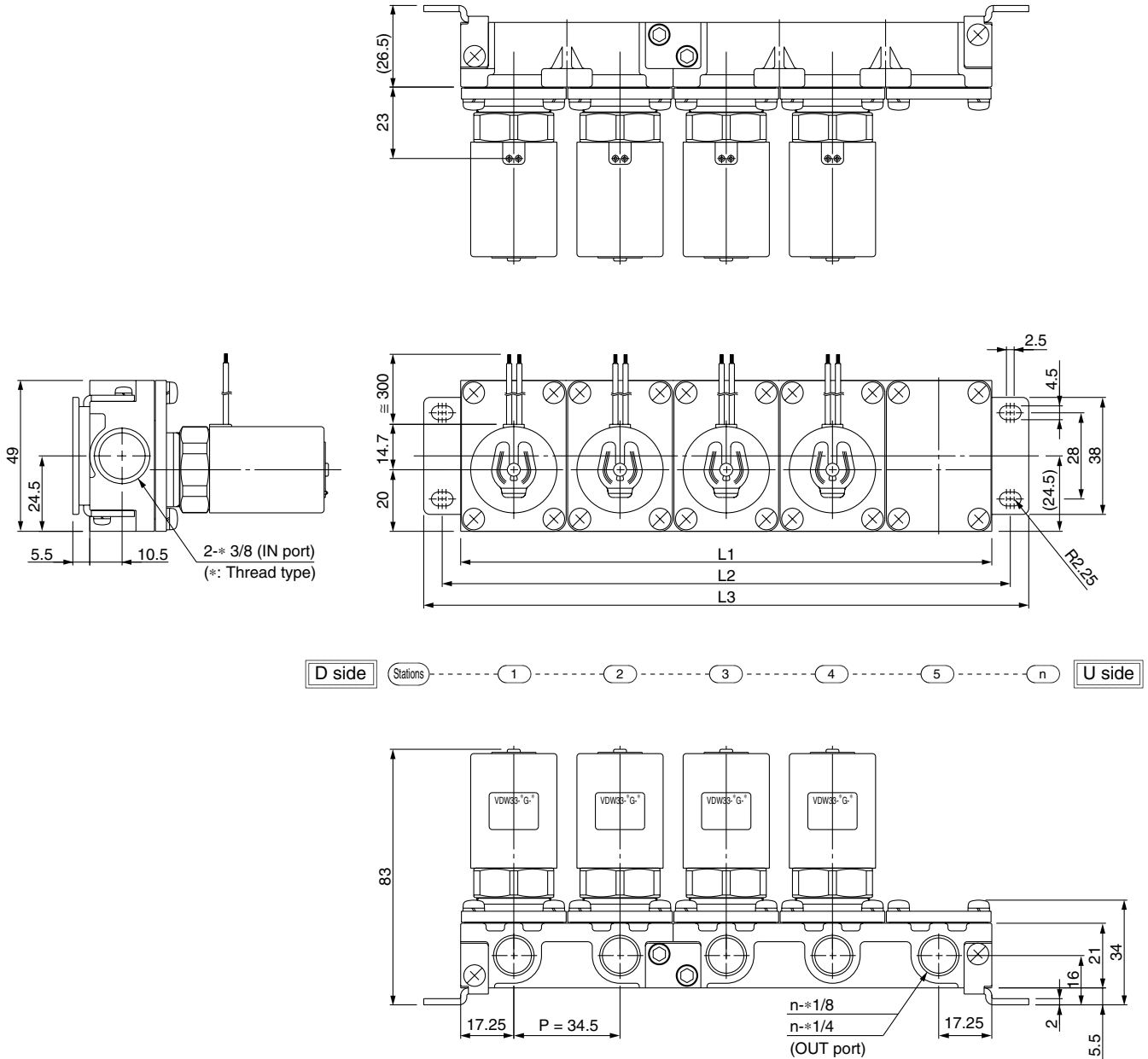
L Dimension

Dimension	n (stations)								
	2	3	4	5	6	7	8	9	10
L1	44	66	88	110	132	154	176	198	220
L2	53	75	97	119	141	163	185	207	229
L3	62	84	106	128	150	172	194	216	238
Manifold composition	2 stns. x 1	3 stns. x 1	2 stns. x 2	2 stns. + 3 stns.	3 stns. x 2	2 stns. x 2 + 3 stns.	2 stns. + 3 stns. x 2	3 stns. x 3	2 stns. x 2 + 3 stns. x 2

Note) Manifold base is consisted of the junction of 2 and 3 station bases. Refer to pages 17-2-72/73 regarding manifold additions.

Compact Direct Operated 2 Port Solenoid Valve For Water and Air Series VDW10/20/30

VV2DW3



- VC
- VDW**
- VQ
- VX2
- VX3
- VX3
- VXA
- VN
- LVC
- LVA
- L VH
- LVD
- L VQ
- LQ
- LVN
- TI/
TIL
- PA
- PAX
- PB

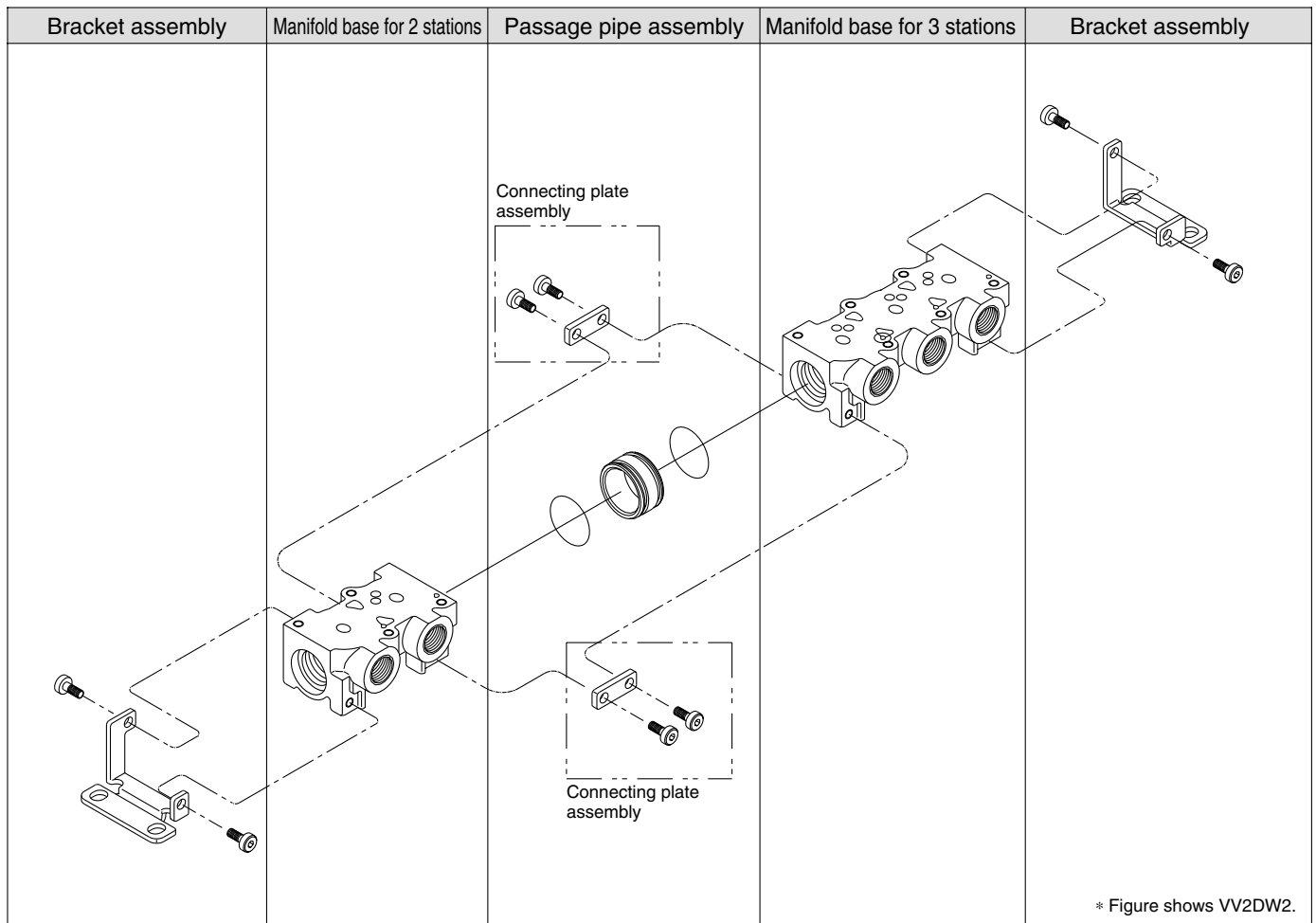
L Dimension

Dimension	n (stations)									(mm)
	2	3	4	5	6	7	8	9	10	
L1	69	103.5	138	172.5	207	241.5	276	310.5	345	
L2	81	115.5	150	184.5	219	253.5	288	322.5	357	
L3	93	127.5	162	196.5	231	265.5	300	334.5	369	
Manifold composition	2 stns. x 1	3 stns. x 1	2 stns. x 2	2stns. + 3stns.	3 stns. x 2	2 stns. x 2 + 3 stns.	2 stns. + 3 stns. x 2	3 stns. x 3	2 stns. x 2 + 3 stns. x 2	

Note) Manifold base is consisted of the junction of 2 and 3 station bases.
Refer to pages 17-2-72/73 regarding manifold additions.

Series VDW10/20/30

Manifold Exploded View



Manifold additions

1. Install a passage pipe assembly in between the manifold bases to be added.
2. Connect the respective manifold bases with a connecting plate assembly. (Tightening torque: 0.9 ± 0.1 N·m)
3. Attach brackets to the manifold bases. {when equipped with brackets} (Tightening torque: 0.9 ± 0.1 N·m)

Note) Manifold can be increased by every 2 or 3-station unit.

Order one set each of manifold base, connection plate assembly and passage pipe

Compact Direct Operated 2 Port Solenoid Valve For Water and Air Series VDW10/20/30

<Manifold base>

- Types 10, 20

VVDW **2** 0 - 2 **C** - **1** - **01** □

Series

1	10
2	20

Material

C	C37
S	SUS

Stations

1	For 2 stations
2	For 3 stations

Thread type

Nil	Rc
F	G
N	NPT

OUT port size

Symbol	Port size
M5	M5
01	1/8 (6A)

* Type 10 is M5 only.

- Type 30

VVCW20 - 2 **C** - **1** - **01** □

Material

C	C37
S	SUS

Stations

1	For 2 stations
2	For 3 stations

Thread type

Nil	Rc
F	G
N	NPT

OUT port size

Symbol	Port size
01	1/8 (6A)
02	1/4 (8A)

<Connecting plate assembly>

- Types 10, 20

VVDW **2** 0 - 4A

Series

1	10
2	20

Note) Two sets of connecting plate and mounting screws.

- Type 30

VVCW20-4A

<Passage pipe assembly>

- Types 10, 20

VVDW **2** 0 - 6A - □

Series

1	10
2	20

Material

Symbol	Pipe material	Seal material
Nil	C37	NBR
A	C37	FKM
G	Stainless steel	NBR
H	Stainless steel	FKM

- Type 30

VVCW20 - 6A - □

Material

Symbol	Pipe material	Seal material
Nil	C37	NBR
A	C37	FKM
G	Stainless steel	NBR
H	Stainless steel	FKM

<Bracket assembly>

- Types 10, 20

VVDW **2** 0 - 5A

Series

1	10
2	20

Note) Consists of a set for D and U sides.

- Type 30

VVCW20-5A

VC□

VDW

VQ

VX2

VX□

VX3

VXA

VN□

LVC

LVA

LVH

LVD

LVQ

LQ

LVN

TI/
TIL

PA

PAX

PB