

# Series VT317

# Manifold Specifications

VT317 manifold is B mount style and available both as a common exhaust and individual exhaust model.

VV317-02-051-02-A



Common exhaust

VV317-02-051-02



VV317-02-053-02

Individual exhaust

## How to Order Manifold

**VV317 - 02 - 05 1 - 02 - A**

**Base type:** 1/4

**VT317 manifold**  
\* Please indicate manifold base type, applicable manifold valve and blanking plate when ordering.

**Valve stations**

02	2 stations
:	:
20	20 stations

Max. 20

**Thread type**

Nil	Rc
F	G
N	NPT
T	NPTF

**A port size (Base piping)** 1/4

**Option**

**A** Mounting bracket \*  
\* Common exhaust type only

**Symbol**

Symbol	Passage		Porting specifications
	P	R	
1	Common	Common	Side
3	Common	Individual	Side

**Ordering example:**  
 VV317-02-051-02-A..... 1 pc. (5-station manifold base)  
 VO317-1G..... 4 pcs.  
 PVT317-53-1A..... 1 pc. (Blanking plate)

## Manifold Specifications

Manifold type	B mount			
Max. number of stations	20 stations <sup>(1)</sup>			
Applicable solenoid valve	VO317□-□□□□ <sup>(3)</sup>			
Exhaust port		Port location (Direction)/Port size		
Symbol	Type	P	A	R
1	Common <sup>(2)</sup>	Base (Side) 1/4 (3/8)	Base (Side) 1/4	Base (Side) 1/4 (3/8)
3	Individual	Base (Side) 1/4	Base (Side) 1/4	Base (Side) 1/4

Note 1) For more than 3 stations, supply air both sides of P port. The common exhaust type should exhaust from both of the R port.

Note 2) In the case of common exhaust type, R and P ports size can be Rc 3/8 by using a mounting adaptor.

Note 3) Can also be applied to Series VVT320 manifold.

## Accessory for Applicable Solenoid

Description	Part no.	Qty	Note
O-ring	P10	4	Standard type vacuum specifications type Continuous duty type
	P10F		
Hexagon socket head screw	Max. 0.7 x 20	2	

## Option

Description	Part no.
Blanking plate (With screw, O-ring)	PVT317-53-1A
Mounting bracket (With screw)	DXT010-37-4 (For common exhaust)

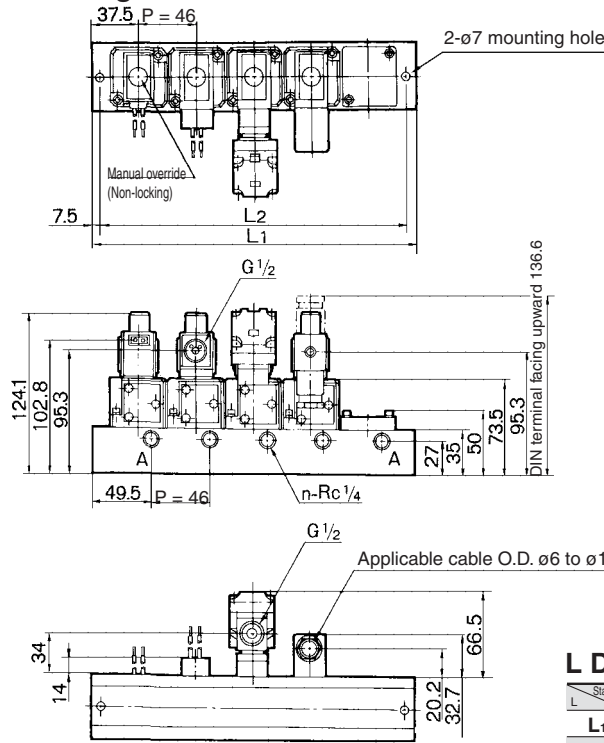
## Flow Characteristics/Weight

Valve model	Flow characteristics												Weight Grommet
	1 → 2 (P → A)			2 → 3 (A → R)			3 → 2 (R → A)			2 → 1 (A → P)			
	C [dm <sup>3</sup> /(s·bar)]	b	Cv	C [dm <sup>3</sup> /(s·bar)]	b	Cv	C [dm <sup>3</sup> /(s·bar)]	b	Cv	C [dm <sup>3</sup> /(s·bar)]	b	Cv	
VO317	2.0	0.11	0.47	2.2	0.12	0.49	2.0	0.14	0.45	2.1	0.14	0.48	0.32 kg
VO317V (Vacuum spec. type)													
VO317E (Continuous duty type)													

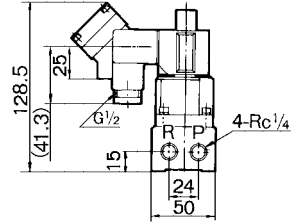
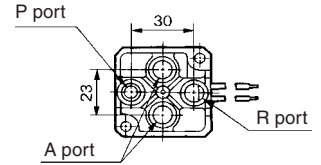
# 3 Port Direct Operated Poppet Solenoid Valve Rubber Seal Series **VT317**

**Dimensions: Common Exhaust (Interchangeable with VVT320 for mounting)**

## Without mounting bracket: VV317-02-□1-02



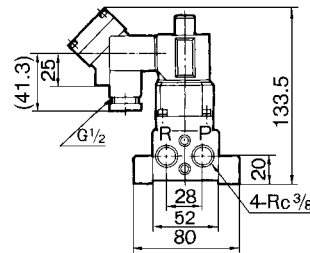
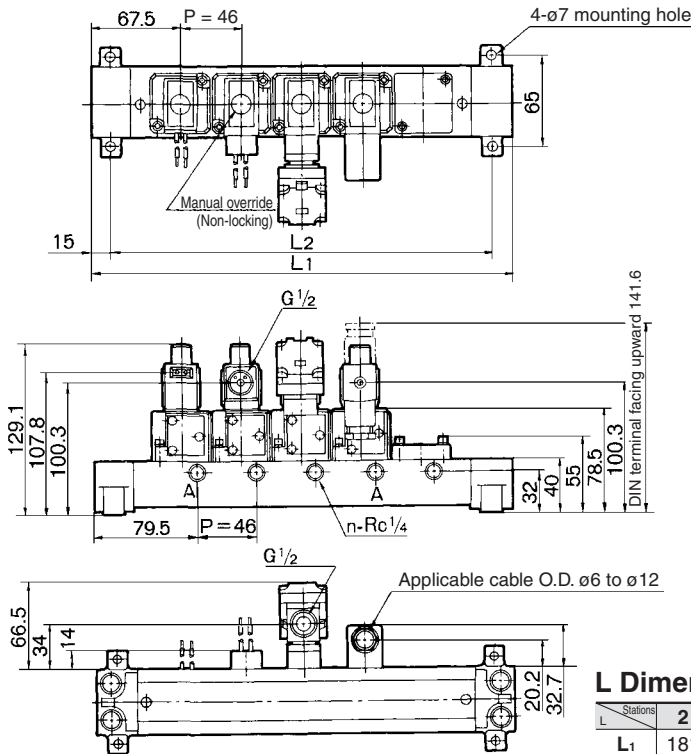
## A single valve unit port location



### L Dimension

Stations		2	3	4	5	6	7	8	9	10	Formula
L <sub>1</sub>		121	167	213	259	305	351	397	443	489	L <sub>1</sub> = 46 x n + 29
L <sub>2</sub>		106	152	198	244	290	336	382	428	474	L <sub>2</sub> = 46 x n + 14

## With mounting adaptor: VV317-02-□1-02-A



### L Dimension

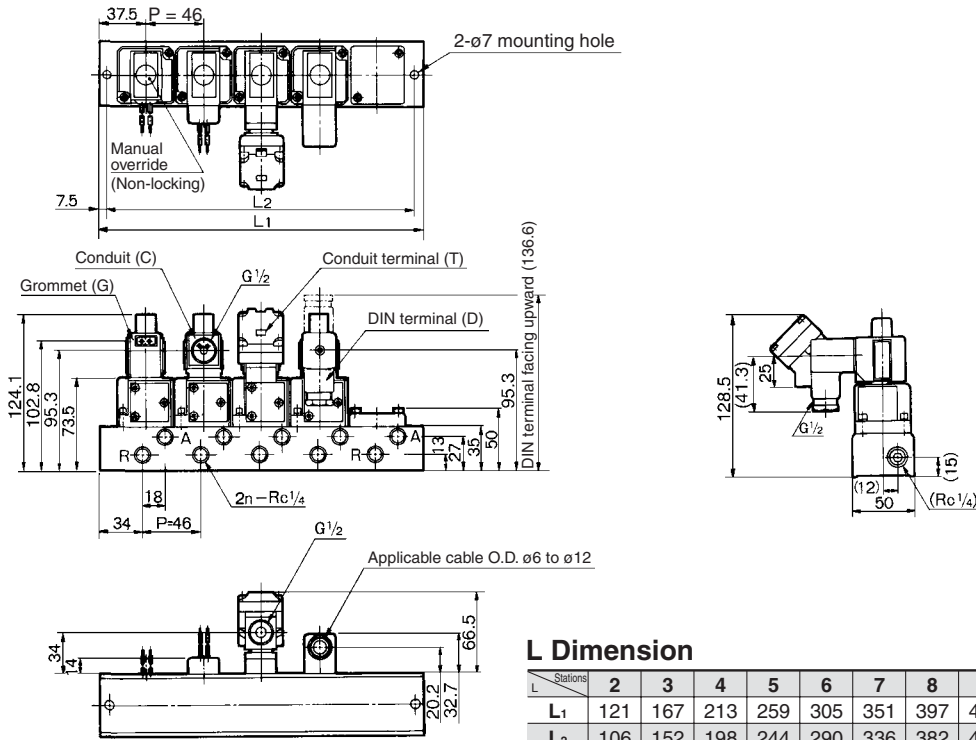
Stations		2	3	4	5	6	7	8	9	10	Formula
L <sub>1</sub>		181	227	273	319	365	411	457	503	549	L <sub>1</sub> = 46 x n + 89
L <sub>2</sub>		151	197	243	289	335	381	427	473	519	L <sub>2</sub> = 46 x n + 59

- V100
- SY
- SYJ
- VK
- VZ
- VT**
- VP
- VG
- VP
- S070
- VQ
- VKF
- VQZ
- VZ
- VS
- VFN

# Series VT317

## Dimensions: Individual Exhaust

Without mounting bracket/VV317-02-□3-02



### L Dimension

n: Stations

L Stations	2	3	4	5	6	7	8	9	10	Formula
L <sub>1</sub>	121	167	213	259	305	351	397	443	489	L <sub>1</sub> = 46 x n + 29
L <sub>2</sub>	106	152	198	244	290	336	382	428	474	L <sub>2</sub> = 46 x n + 14

## ⚠ Precautions

Be sure to read before handling. For Safety Instructions and Solenoid Valve Precautions, refer to page 4-18-2.

### Mounting

#### ⚠ Warning

- When mounting valves on the manifold base, the mounting orientation is decided. If it is mounted in the wrong direction, connected equipment may malfunction. Mount it by referring to how to switch over from N.C. to N.O. specifications.

#### ⚠ Caution

- Each valve is fixed to the manifold base with two M4 mounting screws. Tighten the screws evenly when re-mounting. Tightening torque of the mounting screw (M4): 1.4 N·m
- For mounting, tighten M4 or equivalent screws evenly into the mounting holes of the manifold base.

### Changing from N.C. to N.O.

#### ⚠ Caution

Universal porting permits convertibility N.C./N.O. by a simple 180 degree rotation. Mounting conditions for N.C. and N.O. is indicated as below figure.

Exhaust port type \ Valve	N.C.	N.O.
Common exhaust		
Individual exhaust		



\* Changing from N.C. to N.O.

This product is delivered as N.C. valve. If N.O. valve is needed, remove mounting screws of the required valve and turn the valve at 180° degrees. (Make sure that there are O-rings fixed on 4 positions of the valve surface.) Then, tighten the mounting screws to fix the valve to the manifold base.