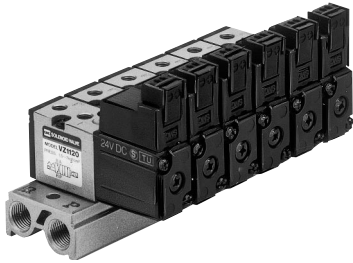


# Series VZ1000 Manifold



## Standard Manifold



### Specifications

Model		20 type
Manifold style		Single base/B mount
P (SUP), R (EXH)		Common SUP and EXH
Valve stations		2 to 20
A, B port position		Valve
Port size	P/R port	Rc (PT) 1/8
	A/B port	M5 X 0.8
Valve effective area (mm <sup>2</sup> ) (Cv) <sup>(1)</sup>	VZ1120	P→A: 0.48 (0.026), A→R: 0.85(0.047)



Note 1) Value at manifold base mounted, single operating

### How to Order Manifold Base

To order valves and blank plate assembly mounted onto the manifold, list valves and blank plate assembly with manifold base.

(Example) VV4Z1-20-031 .....1 pc. (Manifold base)  
 VZ1120-5G-M5 .....2 pcs. (Valve)  
 DXT170-25-1A .....1 pc. (Blank plate assembly)

SY  
SYJ  
SX  
VK  
VZ  
VF  
VFR  
VP7  
VP4

## Flat Cable Manifold

- One-touch wiring to consolidate connection of external wires.
  - Organized appearance
- The flat cable provides wiring on a printed circuit board to the individual valves at the manifold base, enabling the consolidation of external wiring at a touch through a 26 pin MIL connector.



### Specifications

Model		21P type
Manifold style		Single base/B mount
P (SUP), R (EXH)		Common SUP and EXH
Valve stations		3 to 12
A, B port position		Valve
Port size	P/R port	Rc (PT) 1/8
	A/ B port	M5 X 0.8
Valve effective orifice (mm <sup>2</sup> ) (Cv) <sup>(1)</sup>	VZ1120	P→A: 0.48 (0.026), A→R: 0.85 (0.047)
Applicable flat cable connector		Socket: 26 pin MIL, with strain relief (MIL-C-83503)
Internal wiring		+ COM (Contact SMC regarding - COM )
Applicable solenoid valve		VZ1120- <sup>1</sup> / <sub>6</sub> MOZ-M5
Rated voltage		100V AC 50/60Hz, 110V AC 50/60Hz, 24V DC, 12V DC



Note 1) Value at manifold base mounted, single operating

Note 2) Withstand voltage specification of wiring unit part is equivalent to JIS C0704 class 1.

### How to Order Manifold Base

To order valves, blank plate assembly and connector assembly mounted onto the manifold, list valves and blank plate assembly with manifold base.

(Example) VV4Z1-21P-07 .....1 pc. (Manifold base) DXT170-25-3A .....1 pc. (Blank plate assembly)  
 VZ1120-5MOZ-M5 .....1 pc. (Valve) DXT170-127-4A .....6 pcs. (Connector assembly)

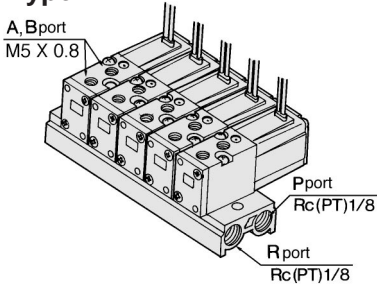
VQ  
VQ4  
VQZ  
VQD  
VZS  
VFS  
VS  
VS7

# VZ1000

## Common SUP/Common EXH

If ≥10 stations, supply air to P port and exhaust from R port on both sides of the manifold.

### 20 Type



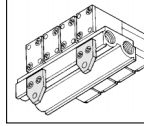
### How to Order

VV4Z1 - 20 - 05 1 - [ ]

Stations	
02	2 stations
⋮	⋮
20	20 stations

### Option

F: With foot style bracket



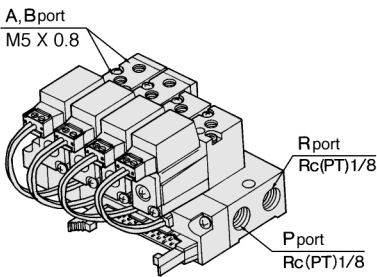
\*The bracket is not assembled.

Applicable solenoid valve

VZ1120-□<sup>G</sup><sub>M</sub>□-M5<sup>L</sup><sub>D</sub>

Applicable blank plate assembly  
DXT170-25-1A  
Individual EXH spacer assembly  
DXT170-48-1A  
Individual SUP spacer assembly  
DXT170-44-1A

### Flat Cable 21P Type



### How to Order

VV4Z1 - 21P - 05 [ ]

Stations	
03	3 stations
⋮	⋮
12	12 stations

Applicable solenoid valve

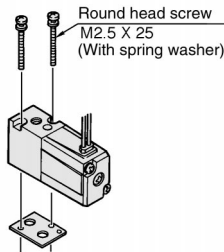
VZ1120-<sup>1</sup>/<sub>5</sub>MOZ-M5<sup>3</sup><sub>6</sub>

Applicable blank plate assembly  
DXT170-25-3A  
Applicable connector assembly  
DXT170-127-□A  
\*1: 100V AC, 3: 110V AC, 4: DC

Refer to p.1.5-7 regarding how to order applicable connector assembly.

## Options/Standard Manifold, Flat Cable Manifold

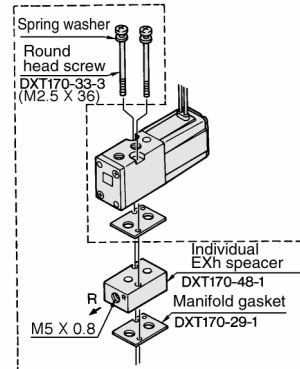
### Combinations of Solenoid Valve, Gasket and Manifold Base



Applicable base  
VV4Z1-20  
VV4Z1-21P

### Individual EXH Spacer Assembly

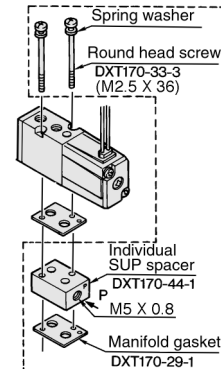
#### DXT170-48-1A



Applicable base  
VV4Z1-20

### Individual SUP Spacer Assembly

#### DXT170-44-1A

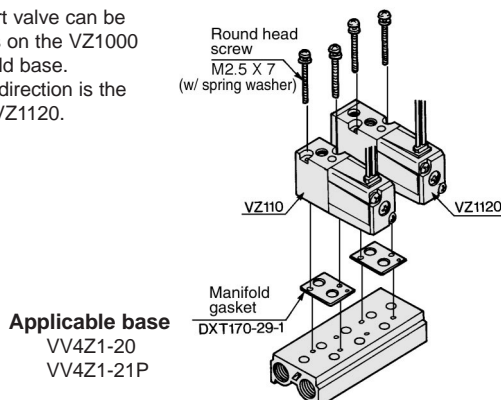


Applicable base  
VV4Z1-20

Note) Contact SMC when using Individual EXH / SUP spacer ass'y at 20P.

### Mixed Mounting of the VZ110 3 Port Valve on the VZ1000 Series Manifold Base

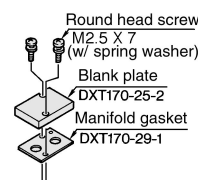
- A VZ110, 3 port valve can be mounted as is on the VZ1000 Series manifold base.
- The mounting direction is the same as the VZ1120.



Applicable base  
VV4Z1-20  
VV4Z1-21P

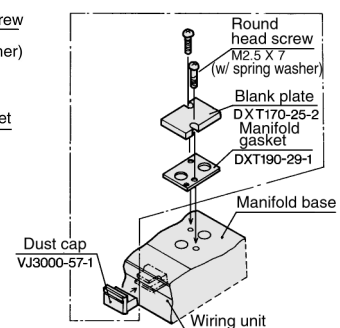
### Blank Plate Assembly

#### DXT170-25-1A

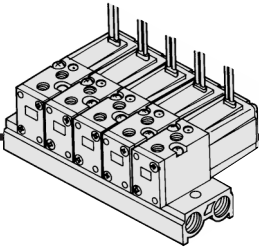


Applicable base  
VV4Z1-20

#### DXT170-25-3A



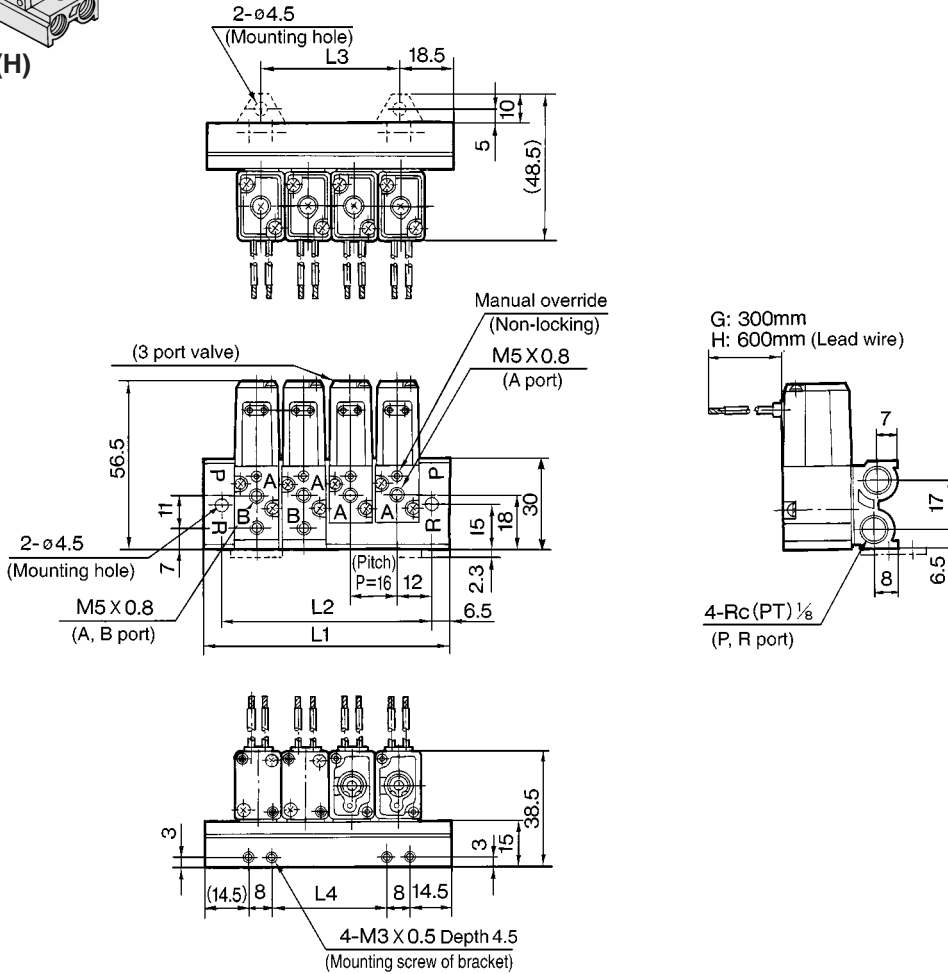
Applicable base  
VV4Z1-21P



## 20 Type Manifold

VV4Z1-20-Station 1-□

Grommet(G), (H)

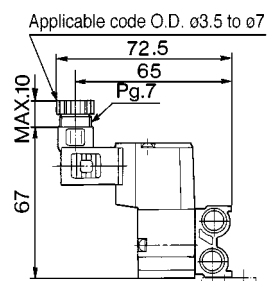
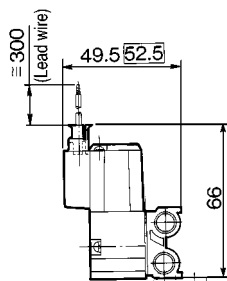
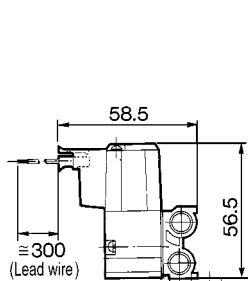


Station	2	3	4	5	6	7	8	9	10	11	12	13	14	15	16	17	18	19	20
L1	53	69	85	101	117	133	149	165	181	197	213	229	245	261	277	293	309	325	341
L2	40	56	72	88	104	120	136	152	168	184	200	216	232	248	264	280	296	312	328
L3	16	32	48	64	80	96	112	128	144	160	176	192	208	224	240	256	272	288	304
L4	8	24	40	56	72	88	104	120	136	152	168	184	200	216	232	248	264	280	296

L plug connector (L)

M plug connector (M)

DIN terminal (D)



□: With indicator light and surge voltage suppressor

20 type manifold	SV4Z1, #4
Bracket (DXT170-34-2A)	SV4Z1, (#12, #004)
Blank plate (DXT170-25-1A)	SV4Z1, (#12, #005)
Individual EXH spacer (DXT170-48-1A)	SV4Z1, (#12, #006)
Individual SUP spacer (DXT170-44-1A)	SV4Z1, (#12, #007)

SY

SYJ

SX

VK

**VZ**

VF

VFR

VP7

VP4

VQ

VQ4

VQZ

VQD

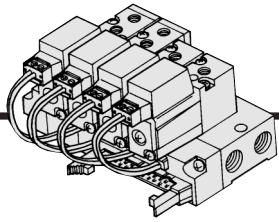
VZS

VFS

VS

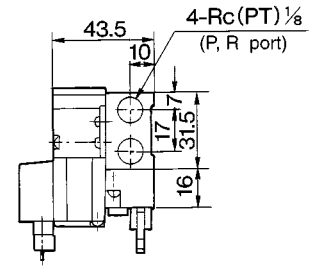
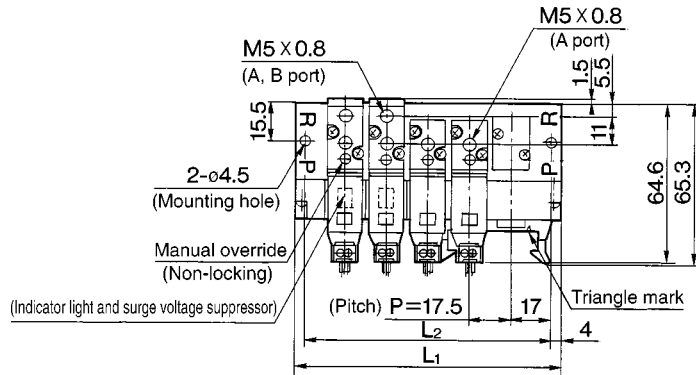
VS7

# VZ1000

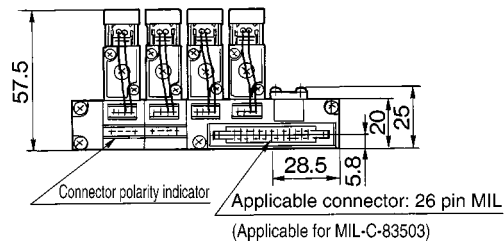


## 21P Type Flat Cable Manifold

VV4Z1-21P-Station



$n^{\text{th}}$  station.....1st station



(mm)

Station	3	4	5	6	7	8	9	10	11	12
L1	77	94.5	112	129.5	147	164.5	182	199.5	217	234.5
L2	69	86.5	104	121.5	139	156.5	174	191.5	209	226.5