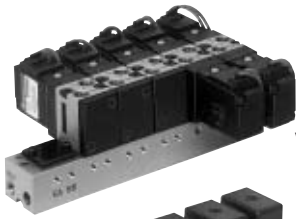
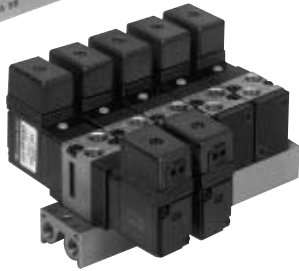


Series VF1000

Manifold Specifications



VV5F1-31



VV5F1-30

Manifold Specifications

Manifold type	B mount (Single base type)
Max. number of stations	Max. 20 stations ^(Note)

Note) For more than 8 stations, supply air to both sides of P port and exhaust air from both sides of R port.

Manifold base model	Exhaust port type	Piping/Port location			Port size			Applicable valve model
		P	R (E)	A, B	P	R (E)	A, B	
VV5F1-30	Common EXH	Side Base	Side Base	Top Valve	1/8	1/8	1/8	VF1□30 VF1□33
VV5F1-31	Individual EXH	Side Base	Side Base	Top Valve	1/8	M5	1/8	

Note 1) Supply (P port) is common.
Note 2) Direction of single solenoid: Same side of P(SUP) port.

Option

Description	Part no.	Applicable manifold model
Throttle valve	DXT154-34-1A	VV5F1-31
Silencer	AN120-M5	VV5F1-31
	AN110-01	VV5F1-30
Blanking plate assembly	DXT144-13-2A	VV5F1-30/31

How to Order Manifold

Instruct by specifying the valves and blanking plate assembly to be mounted on the manifold along with the manifold base model no.

(Example) VV5F1-30-051 1 pc. (Manifold base)

*VF1230-1G-01 2 pcs. (Valve)

*VF1130-1G-01 2 pcs. (Valve)

*DXT144-13-2A 1 pc. (Blanking plate assembly)

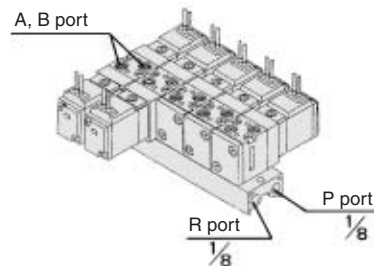
—The asterisk denotes the symbol for assembly. Prefix it to the part nos. of the solenoid valve, etc.

B Mount (Integrated type)

Common SUP/Individual EXH type

Type 30

VV5F1 - 30 - 05 1



Stations	
02	2 stations
⋮	⋮
20	20 stations

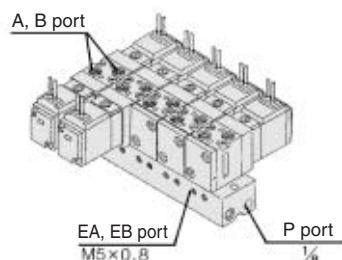
Applicable solenoid valve

VF1 $\frac{1}{2}$ 30-□□□□-□
VF1 $\frac{1}{2}$ 33-□□□□-□

Common SUP/Individual EXH type

Type 31

VV5F1 - 31 - 05 3



Stations	
02	2 stations
⋮	⋮
20	20 stations

Applicable blanking plate assembly

DXT144-13-2A

VK

VZ

VF

VFR

VP4

VZS

VFS

VS4

VQ7

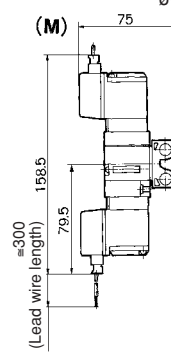
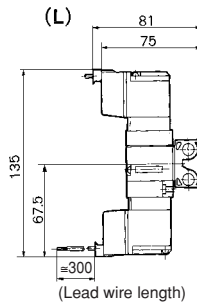
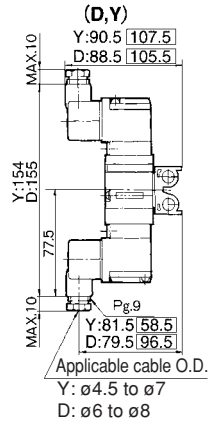
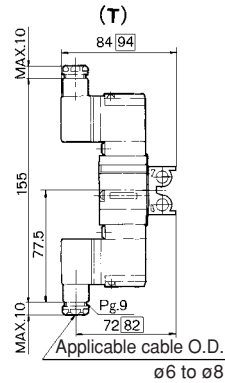
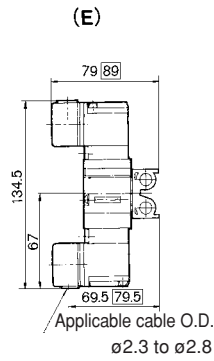
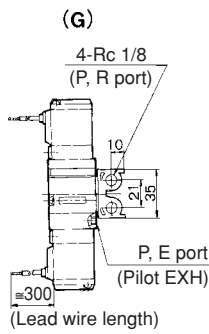
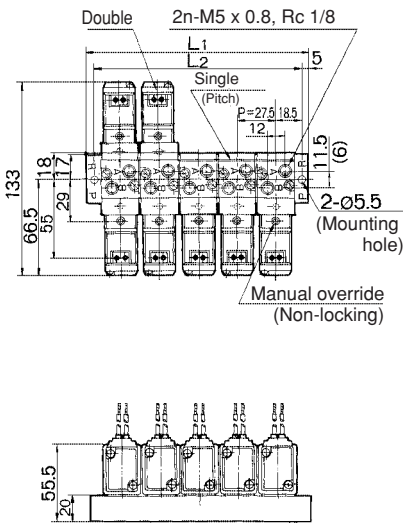
EVS

VFN

Series VF1000

Manifold

Common EXH: VV5F1-30-□□□



L Dimension

n: Stations

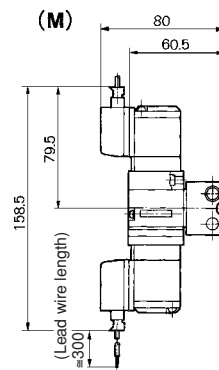
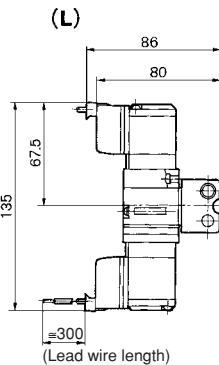
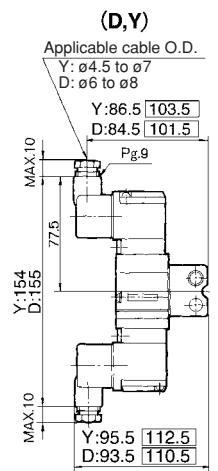
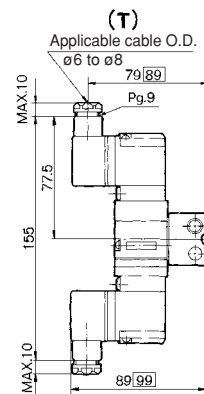
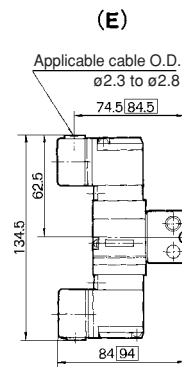
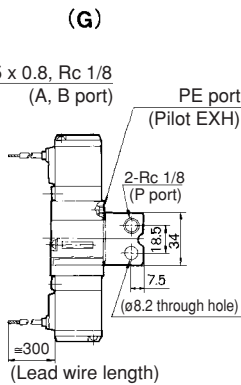
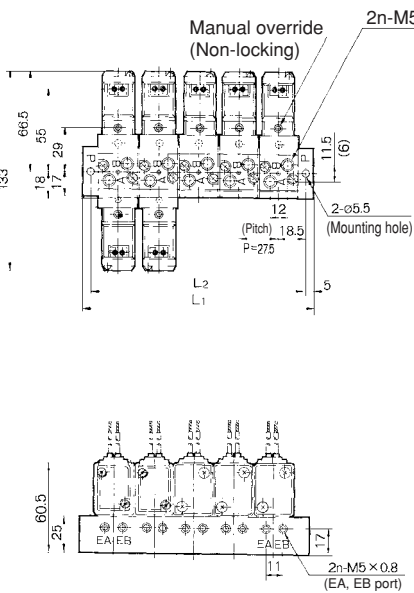
L	n	2	3	4	5	6	7	8	9	10	11	12	13	14	15	16	17	18	19	20
L ₁		74.5	102	129.5	157	184.5	212	239.5	267	294.5	322	349.5	377	404.5	432	459.5	487	514.5	542	569.5
L ₂		64.5	92	119.5	147	174.5	202	229.5	257	284.5	312	339.5	367	394.5	422	449.5	477	504.5	532	559.5



() : M5 x 0.8

□ : With light/surge voltage suppressor

Individual EXH: VV5F1-31-□□□



L Dimension

n: Stations

L	n	2	3	4	5	6	7	8	9	10	11	12	13	14	15	16	17	18	19	20
L ₁		74.5	102	129.5	157	184.5	212	239.5	267	294.5	322	349.5	377	404.5	432	459.5	487	514.5	542	569.5
L ₂		64.5	92	119.5	147	174.5	202	229.5	257	284.5	312	339.5	367	394.5	422	449.5	477	504.5	532	559.5



() : M5 x 0.8

□ : With light/surge voltage suppressor