

Energy Saving Type

Direct Operated 2 Port Solenoid Valve

Series VXE21/22/23

For Air/Water/Oil



Single Unit

Valve

Normally closed (N.C.)

Solenoid Coil

Coil: Class B

Rated Voltage

24 VDC, 12 VDC

Material

Body — Brass (C37), Stainless steel
Seal — NBR, FKM, EPDM, PTFE

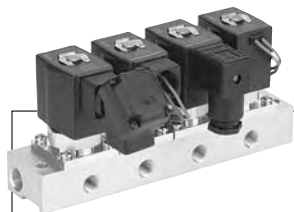
Electrical Entry

- Grommet
- Conduit
- DIN terminal
- Conduit terminal



Normally Closed (N.C.)

| Model | VXE21 | VXE22 | VXE23 | | |
|------------------|---------|-------|-------|-----|-----|
| Orifice diameter | 2mmø | ● | — | — | — |
| | 3 mmø | ● | ● | — | ● |
| | 4.5 mmø | ● | ● | — | ● |
| | 6 mmø | — | ● | — | ● |
| | 8 mmø | — | ● | — | ● |
| 10 mmø | — | ● | ● | ● | ● |
| Port size | 1/8 | 1/4 | 1/2 | 1/4 | 1/2 |
| | 1/4 | 3/8 | | 3/8 | |



Manifold

Valve

Normally closed (N.C.)

Base

Common SUP
Individual SUP (Aluminum base only)

Solenoid Coil

Coil: Class B

Rated Voltage

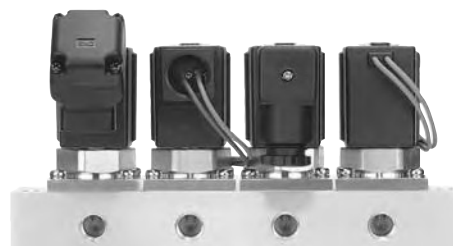
24 VDC, 12 VDC

Material

Body — Aluminum, Brass (C37),
Stainless steel
Base — Aluminum, Brass (C37),
Stainless steel
Seal — NBR, FKM, EPDM, PTFE

Electrical Entry

- Grommet
- Conduit
- DIN terminal
- Conduit terminal



Manifold

| Model | VXE21 | VXE22 | VXE23 | |
|------------------------|----------|-------|----------|---|
| Orifice dia. | 2 mmø | ● | — | — |
| | 3 mmø | ● | ● | ● |
| | 4.5 mmø | ● | ● | ● |
| | 6 mmø | — | ● | ● |
| (Common SUP) Port size | IN port | | 3/8 | |
| | OUT port | | 1/8, 1/4 | |

Series VXE21/22/23

Common Specifications

Standard Specifications

| | | |
|----------------------|-------------------------------|---|
| Valve specifications | Valve construction | Direct operated poppet |
| | Valve type | N.C. |
| | Withstand pressure | 5.0 MPa |
| | Body material | Brass (C37), Stainless steel |
| | Seal material | NBR, FKM, EPDM, PTFE |
| | Enclosure | Dusttight, Low jetproof (IP65) |
| | Environment | Location without corrosive or explosive gases |
| Coil specifications | Rated voltage | 24 VDC, 12 VDC |
| | Allowable voltage fluctuation | ±10% of rated voltage |
| | Allowable leakage voltage | 2% or less of rated voltage |
| | Coil insulation type | Class B |
| | Surge voltage suppressor | Built-in surge voltage suppressor |

Solenoid Coil Specifications

Normally Closed (N.C.)

DC Specification

| Model | Power consumption (W) (Holding) | Inrush current (A) (Inrush time: 200 ms) | | Temperature increase (C°) <small>Note</small> |
|-------|------------------------------------|--|--------|--|
| | | 24 VDC | 12 VDC | |
| VXE21 | 1.5 | 0.19 | 0.38 | 25 |
| VXE22 | 2.3 | 0.29 | 0.58 | 25 |
| VXE23 | 3 | 0.44 | 0.88 | 30 |

Note) Value for ambient temperature at 20°C and when the rated voltage is applied.

Applicable Fluid Check List / All Options (Single Unit)

VXE2 0 - - 1 -

● Option symbol

| Fluid and application | Option symbol | Seal material | Body material |
|---|-------------------------|---------------|-----------------|
| Air | Nil | NBR | Brass (C37) |
| | G | | Stainless steel |
| Medium vacuum/Non-leak/ Oil-free <small>Note 1</small> | V <small>Note 2</small> | FKM | Brass (C37) |
| | M <small>Note 2</small> | | Stainless steel |
| Water | Nil | NBR | Brass (C37) |
| | G | | Stainless steel |
| Oil <small>Note 3</small> | A | FKM | Brass (C37) |
| | H | | Stainless steel |
| High corrosive/Oil-free | L <small>Note 2</small> | FKM | Stainless steel |
| Copper-free/Fluoro-free <small>Note 4</small> | J | EPDM | Stainless steel |
| Other combination | B | PTFE | Brass (C37) |
| | C | | Stainless steel |
| | K | | Stainless steel |

Applicable Fluid Check List / All Options (Manifold)

VXE2 1 - - 1

● Option symbol ● Base symbol

| Fluid and application | Option symbol | Base symbol | Seal material | Body material |
|---|-------------------------|-------------|---------------|-----------------|
| Air | Nil | 00 | NBR | Aluminum |
| Medium vacuum/Non-leak/Oil-free <small>Note 1</small> | V <small>Note 2</small> | 00 | FKM | Aluminum |
| Water | Nil | Nil | NBR | Brass (C37) |
| | G | | | Stainless steel |
| Oil <small>Note 3</small> | A | Nil | FKM | Brass (C37) |
| | H | | | Stainless steel |
| High corrosive/Oil-free | L <small>Note 2</small> | Nil | FKM | Stainless steel |
| Non-leak/Copper-free/Oil-free <small>Note 4</small> | R | 00 | FKM | Aluminum |

Note 1) The leakage amount (10⁻⁶ Pa·m³/s) of V and M options is value when differential pressure is 0.1 MPa.

Note 2) The V, M and L options are oil-free treatment.
Note 3) The dynamic viscosity of the fluid must not exceed 50 mm²/s or less.

Note 4) The nuts (non-wetted parts) are nickel plated on the C37 material.

* If using for other fluids, please consult with SMC.

Series VXE21/22/23

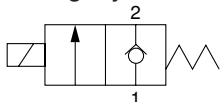
For Air /Single Unit

(Inert gas/Non-leak/Medium vacuum)

Model/Valve Specifications

N.C.

Passage symbol



Normally Closed (N.C.)

| Port size | Orifice dia. (mm) | Model | Max. operating pressure differential (MPa) | Flow characteristics | | | Max. system pressure (MPa) | Weight (g) ^(Note) |
|------------|-------------------|------------|--|-----------------------------|------|------|----------------------------|------------------------------|
| | | | | C[dm ³ /(s·bar)] | b | Cv | | |
| 1/8 (6A) | 2 | VXE2110-01 | 1.5 | 0.59 | 0.48 | 0.18 | 300 | |
| | 3 | VXE2120-01 | 0.6 | 1.2 | 0.45 | 0.33 | | |
| | 4.5 | VXE2130-01 | 0.2 | 2.3 | 0.46 | 0.61 | | |
| 1/4 (8A) | 2 | VXE2110-02 | 1.5 | 0.59 | 0.48 | 0.18 | 3.0 | |
| | | VXE2120-02 | 0.6 | 1.2 | 0.45 | 0.33 | | |
| | | VXE2220-02 | 1.5 | | | | | |
| | VXE2320-02 | 3.0 | | | | | | |
| | 4.5 | VXE2130-02 | 0.2 | 2.3 | 0.46 | 0.61 | | |
| | | VXE2230-02 | 0.35 | | | | | |
| | | VXE2330-02 | 0.9 | | | | | |
| | 6 | VXE2240-02 | 0.15 | 4.1 | 0.30 | 1.10 | | |
| | | VXE2340-02 | 0.35 | | | | | |
| | | VXE2250-02 | 0.08 | | | | | |
| | 8 | VXE2350-02 | 0.2 | 6.4 | 0.30 | 1.60 | | |
| | | VXE2260-02 | 0.03 | | | | | |
| VXE2360-02 | | 0.07 | | | | | | |
| 3/8 (10A) | 3 | VXE2220-03 | 1.5 | 1.2 | 0.45 | 0.33 | 3.0 | |
| | | VXE2320-03 | 3.0 | | | | | |
| | | VXE2230-03 | 0.35 | | | | | |
| | 4.5 | VXE2330-03 | 0.9 | 2.3 | 0.46 | 0.61 | | |
| | | VXE2240-03 | 0.15 | | | | | |
| | | VXE2340-03 | 0.35 | | | | | |
| | 6 | VXE2250-03 | 0.08 | 4.1 | 0.30 | 1.10 | | |
| | | VXE2350-03 | 0.2 | | | | | |
| | | VXE2260-03 | 0.03 | | | | | |
| 10 | VXE2360-03 | 0.07 | 11 | 0.30 | 2.20 | | | |
| | VXE2260-04 | 0.03 | | | | | | |
| | VXE2360-04 | 0.07 | | | | | | |
| 1/2 (15A) | 10 | VXE2260-04 | 0.03 | 11 | 0.30 | 2.20 | 560 | |
| | | VXE2360-04 | 0.07 | | | | 700 | |

Note) Weight of grommet type. Add 10 g for conduit, 30 g for DIN terminal, and 60 g for conduit terminal type respectively.
 • Refer to "Glossary" on page 44 for details on the max. operating pressure differential and the max. system pressure.

Fluid and Ambient Temperature

| Fluid temperature (°C) | | Ambient temperature (°C) |
|------------------------------|----------------------------|--------------------------|
| Solenoid valve option symbol | | |
| Nil, G | V, M | -20 to 60 |
| -10 ^{Note)} to 60 | -10 ^{Note)} to 60 | |

Note) Dew point temperature: -10°C or less

Valve Leakage

Internal Leakage

| Seal material | Leakage | |
|---------------|--------------------------------|---|
| | Air | Non-leak/ Medium vacuum ^{Note)} |
| NBR, FKM | 1 cm ³ /min or less | 10 ⁻⁶ Pa·m ³ /sec or less |

External Leakage

| Seal material | Leakage | |
|---------------|--------------------------------|---|
| | Air | Non-leak/ Medium vacuum ^{Note)} |
| NBR, FKM | 1 cm ³ /min or less | 10 ⁻⁶ Pa·m ³ /sec or less |

Note) Value for V and M options (Non-leak/Medium vacuum)

How to Order (Single Unit)

DC VXE 21 2 0 [] [] - 01 [] - 5 G 1 - []

Model
Refer to Table (1) shown below for availability.

Orifice diameter
Refer to Table (1) shown below for availability.

Valve/Body configuration
0 N.C. / Single unit

Solenoid valve option
Refer to Table (2) shown below for availability.

Suffix

| | |
|-----|----------|
| Nil | — |
| Z | Oil-free |

 Select Nil because the solenoid valve V, M options are oil-free treatment.

Bracket

| | |
|-----|--------------|
| Nil | None |
| B | With bracket |

 * VX021N-12A and VX022N-12A are packed in the same container as the main body.
* Refer to Table (4) if a bracket is ordered separately.

Rated voltage

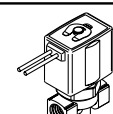
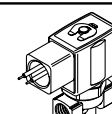
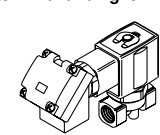
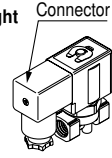
| | |
|---|--------|
| 5 | 24 VDC |
| 6 | 12 VDC |

 * Refer to Table (3) shown below for availability.
Refer to page 43 for ordering coil only.

Thread type

| | |
|-----|------|
| Nil | Rc |
| T | NPTF |
| F | G |
| N | NPT |

Electrical entry

| | |
|---|---|
| G-Grommet  | C-Conduit  |
| T - With conduit terminal TL - With conduit terminal and light  | D - DIN terminal DL - DIN terminal with light DO - For DIN terminal (without connector, with gasket) Connector  |

* Refer to Table (3) for available combinations between electrical option (L) and rated voltage.

Table (1) Model/Orifice Diameter/Port Size Normally Closed (N.C.)

| Model | Solenoid valve model (Port size) | | | Orifice symbol (diameter) | | | | | |
|-------------------------|----------------------------------|----------|----------|---------------------------|--------------|----------------|--------------|--------------|---------------|
| | VXE21 | VXE22 | VXE23 | 1 (2 mmø) | 2 (3 mmø) | 3 (4.5 mmø) | 4 (6 mmø) | 5 (8 mmø) | 6 (10 mmø) |
| Port symbol (Port size) | 01 (1/8) | — | — | ● | ● | ● | — | — | — |
| | 02 (1/4) | — | — | ● | ● | ● | — | — | — |
| | — | 02 (1/4) | 02 (1/4) | — | ● | ● | ● | ● | ● |
| | — | 03 (3/8) | 03 (3/8) | — | ● | ● | ● | ● | ● |
| — | 04 (1/2) | 04 (1/2) | — | — | — | — | — | ● | |

Table (2) Solenoid Valve Option

| Option symbol | Seal material | Body material | Note |
|---------------|---------------|-----------------|--|
| Nil | NBR | Brass (C37) | — |
| G | | Stainless steel | |
| V | FKM | Brass (C37) | Non-leak (10 ⁻⁶ Pa·m ³ /sec)/Oil-free/ Medium vacuum (0.1 Pa.abs) |
| M | | Stainless steel | |

Table (3) Rated Voltage – Electrical Option

| Rated voltage | | L (With light) |
|----------------|---------|----------------|
| Voltage symbol | Voltage | |
| 5 | 24 VDC | ● |
| 6 | 12 VDC | — |

Table (4) Bracket Part No.

| Model | Part no. |
|------------------------------------|--------------|
| VXE21 ¹ ₃ 20 | VX021N-12A |
| VXE22 ² ₄ 30 | VX022N-12A |
| VXE23 ³ ₄ 30 | |
| VXE22 ⁵ ₆ 50 | VX023N-12A-L |
| VXE23 ⁶ ₆ 50 | |

Dimensions → P. 17 (Single unit)

Model
VXE2
VXED2
VXEZ2
Specifications
Applications
For Air
For Water
For Oil
Construction
Dimensions

Series VXE21/22/23

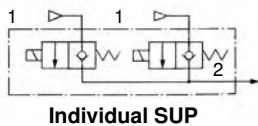
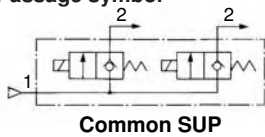
For Air /Manifold

(Inert gas/Non-leak/Medium vacuum)

Solenoid Valve for Manifold/Valve Specifications

N.C.

Passage symbol



Normally Closed (N.C.)

| Orifice dia. (mmø) | Model | Max. operating pressure differential (MPa) | Flow characteristics | | | Max. system pressure (MPa) |
|--------------------|------------|--|-----------------------------|------|------|----------------------------|
| | | | C[dm ³ /(s·bar)] | b | Cv | |
| 2 | VXE2111-00 | 1.5 | 0.59 | 0.48 | 0.18 | 3.0 |
| 3 | VXE2121-00 | 0.6 | 1.2 | 0.45 | 0.33 | |
| | VXE2221-00 | 1.5 | | | | |
| | VXE2321-00 | 3.0 | | | | |
| 4.5 | VXE2131-00 | 0.2 | 2.3 | 0.46 | 0.61 | |
| | VXE2231-00 | 0.35 | | | | |
| | VXE2331-00 | 0.9 | | | | |
| 6 | VXE2241-00 | 0.15 | 4.1 | 0.30 | 1.10 | |
| | VXE2341-00 | 0.35 | | | | |



• Refer to "Glossary" on page 44 for details on the max. operating pressure differential and the max. system pressure.

Fluid and Ambient Temperature

| Fluid temperature (°C) | | Ambient temperature (°C) |
|------------------------------|----------------------------|--------------------------|
| Solenoid valve option symbol | | |
| Nil, R | V | -20 to 60 |
| -10 ^{Note)} to 60 | -10 ^{Note)} to 60 | |



Note) Dew point temperature: -10°C or less

Valve Leakage

Internal Leakage

| Seal material | Leakage | |
|---------------|--------------------------------|---|
| | Air | Non-leak/ Medium vacuum ^{Note)} |
| NBR, FKM | 1 cm ³ /min or less | 10 ⁻⁶ Pa·m ³ /sec or less |

External Leakage

| Seal material | Leakage | |
|---------------|--------------------------------|---|
| | Air | Non-leak/ Medium vacuum ^{Note)} |
| NBR, FKM | 1 cm ³ /min or less | 10 ⁻⁶ Pa·m ³ /sec or less |



Note) Value for V and M options (Non-leak/Medium vacuum)

How to Order (Solenoid Valve for Manifold)

DC VXE 21 2 1 - 00 - 5 G 1

Model
Refer to Table (1) shown below for availability.

Orifice diameter
Refer to Table (1) shown below for availability.

Valve/Body configuration
1 N.C. (for Manifold)

Solenoid valve option
Refer to Table (2) shown below for availability.

Suffix

| | |
|-----|----------|
| Nil | — |
| Z | Oil-free |

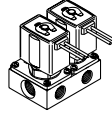
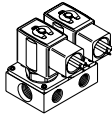
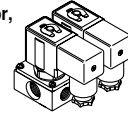
Select Nil because the solenoid valve V, R options are oil-free treatment.

Rated voltage

| | |
|---|--------|
| 5 | 24 VDC |
| 6 | 12 VDC |

* Refer to Table (3) shown below for availability.
Refer to page 43 for ordering coil only.

Electrical entry

| | |
|---|---|
| G-Grommet  | C-Conduit  |
| T -With conduit terminal TL -With conduit terminal and light | D -DIN terminal DL -DIN terminal with light DO -For DIN terminal (without connector, with gasket)  |

* Refer to Table (3) for available combinations between electrical option (L) and rated voltage.

How to Order Manifold Bases

VVX21 VVX22 VVX23 1 - 07 - 1

Port size (Individual port)

| | |
|---|-------|
| 1 | Rc1/8 |
| 2 | Rc1/4 |

* Common port sizes are all Rc3/8.

Thread type

| | |
|-----|------|
| Nil | Rc |
| T | NPTF |
| F | G |
| N | NPT |

Number of manifolds

| | |
|----|-------------|
| 02 | 2 stations |
| : | : |
| 10 | 10 stations |

Suffix

| | |
|-----|----------|
| Nil | — |
| Z | Oil-free |

Base type

| | |
|-----|----------------|
| Nil | Common SUP |
| V | Individual SUP |

Blanking plate part no.

For VXE21: VX011-001
For VXE22/23: VX011-006

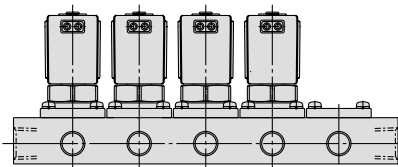
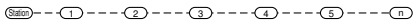
Seal material

| | |
|-----|-----|
| Nil | NBR |
| F | FKM |

How to Order Manifold Assemblies (Example)

Enter the valve and blanking plate to be mounted under the manifold base part number.

Example
VVX211-05-1 1 set "*" is the symbol for mounting.
* VXE2111-00-1G1 ... 4 sets Add an "*" in front of the part numbers
* VX011-001 1 set for solenoid valves, etc. to be mounted.



Enter the product's part number in order, counting the 1st station from the left in the manifold arrangement, when viewing the individual port in front.

Table (1) Model/Orifice Diameter

| Solenoid valve model | Orifice symbol (diameter) | | | |
|----------------------|---------------------------|-----------|-------------|-----------|
| | 1 (2 mmø) | 2 (3 mmø) | 3 (4.5 mmø) | 4 (6 mmø) |
| VXE21 | ● | ● | ● | — |
| VXE22 | — | ● | ● | ● |
| VXE23 | — | ● | ● | ● |

Table (2) Solenoid Valve Option

| Option symbol | Body/Base material | Seal material | Note |
|---------------|--------------------|---------------|--|
| Nil | Aluminum | NBR | — |
| V | | FKM | Non-leak/Medium vacuum/Oil-free |
| R | | FKM | Non-leak/Copper-free/Oil-free ^{Note)} |

Note) The nuts (non-wetted parts) are nickel plated on the C37 material.

Table (3) Rated Voltage – Electrical Option

| Rated voltage | | L (With light) |
|----------------|---------|----------------|
| Voltage symbol | Voltage | |
| 5 | 24 VDC | ● |
| 6 | 12 VDC | — |

Dimensions → P. 19 (Manifold)

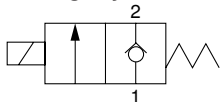
Series VXE21/22/23

For Water /Single Unit

Model/Valve Specifications

N.C.

Passage symbol



Normally Closed (N.C.)

| Port size | Orifice dia. (mmø) | Model | Max. operating pressure differential (MPa) | Flow characteristics | | Max. system pressure (MPa) | Note) Weight (g) | | | | |
|-----------|--------------------|------------|--|--------------------------------------|--------------|----------------------------|------------------|------|------|-----|-----|
| | | | | Av x 10 ⁻⁶ m ² | Cv converted | | | | | | |
| 1/8 (6A) | 2 | VXE2110-01 | 1.5 | 4.1 | 0.17 | 3.0 | 300 | | | | |
| | 3 | VXE2120-01 | 0.5 | 7.9 | 0.33 | | | | | | |
| | 4.5 | VXE2130-01 | 0.2 | 15.0 | 0.61 | | | | | | |
| 1/4 (8A) | 2 | VXE2110-02 | 1.5 | 4.1 | 0.17 | 3.0 | 470 | | | | |
| | | VXE2120-02 | 0.5 | 7.9 | 0.33 | | | | | | |
| | | VXE2220-02 | 1.5 | | | | | | | | |
| | 3 | VXE2320-02 | 3.0 | 15.0 | 0.61 | | | 300 | | | |
| | | VXE2130-02 | 0.2 | | | | | | | | |
| | | VXE2230-02 | 0.35 | | | | | | | | |
| | 4.5 | VXE2330-02 | 0.9 | 26.0 | 1.10 | | | 470 | | | |
| | | VXE2240-02 | 0.15 | | | | | | | | |
| | | VXE2340-02 | 0.3 | | | | | | | | |
| | 6 | VXE2250-02 | 0.08 | 38.0 | 1.60 | | | 620 | | | |
| | | VXE2350-02 | 0.2 | | | | | | | | |
| | | VXE2260-02 | 0.03 | | | | | | | | |
| 8 | VXE2360-02 | 0.07 | 46.0 | 1.90 | 700 | | | | | | |
| | VXE2250-02 | 0.08 | | | | | | | | | |
| | VXE2350-02 | 0.2 | | | | | | | | | |
| 3/8 (10A) | 3 | VXE2260-02 | 0.03 | 53.0 | 2.20 | 1.0 | 560 | | | | |
| | | VXE2360-02 | 0.07 | | | | | | | | |
| | | VXE2220-03 | 1.5 | | | | | | | | |
| | 4.5 | VXE2320-03 | 3.0 | | | | | 15.0 | 0.61 | 3.0 | 470 |
| | | VXE2230-03 | 0.35 | | | | | | | | |
| | | VXE2330-03 | 0.9 | | | | | | | | |
| | 6 | VXE2240-03 | 0.15 | | | | | 26.0 | 1.10 | 620 | |
| | | VXE2340-03 | 0.3 | | | | | | | | |
| | | VXE2250-03 | 0.08 | | | | | | | | |
| | 8 | VXE2350-03 | 0.2 | | | | | 38.0 | 1.60 | 700 | |
| | | VXE2260-03 | 0.03 | | | | | | | | |
| | | VXE2360-03 | 0.07 | | | | | | | | |
| 10 | VXE2260-03 | 0.03 | 53.0 | 2.20 | 1.0 | 560 | | | | | |
| | VXE2360-03 | 0.07 | | | | | | | | | |
| 1/2 (15A) | 10 | VXE2260-04 | 0.03 | 53.0 | 2.20 | 1.0 | 560 | | | | |
| | | VXE2360-04 | 0.07 | | | | | | | | |

Note) Weight of grommet type. Add 10 g for conduit, 30 g for DIN terminal, and 60 g for conduit terminal type respectively.

- Refer to "Glossary" on page 44 for details on the max. operating pressure differential and the max. system pressure.

Fluid and Ambient Temperature

| Fluid temperature (°C) | Ambient temperature (°C) |
|------------------------------|--------------------------|
| Solenoid valve option symbol | |
| Nil, G, L | -20 to 60 |
| 1 to 60 | |

Note) With no freezing

Valve Leakage

Internal Leakage

| Seal material | Leakage (Water) |
|---------------|----------------------------------|
| NBR, FKM | 0.1 cm ³ /min or less |

External Leakage

| Seal material | Leakage (Water) |
|---------------|----------------------------------|
| NBR, FKM | 0.1 cm ³ /min or less |

How to Order (Single Unit)

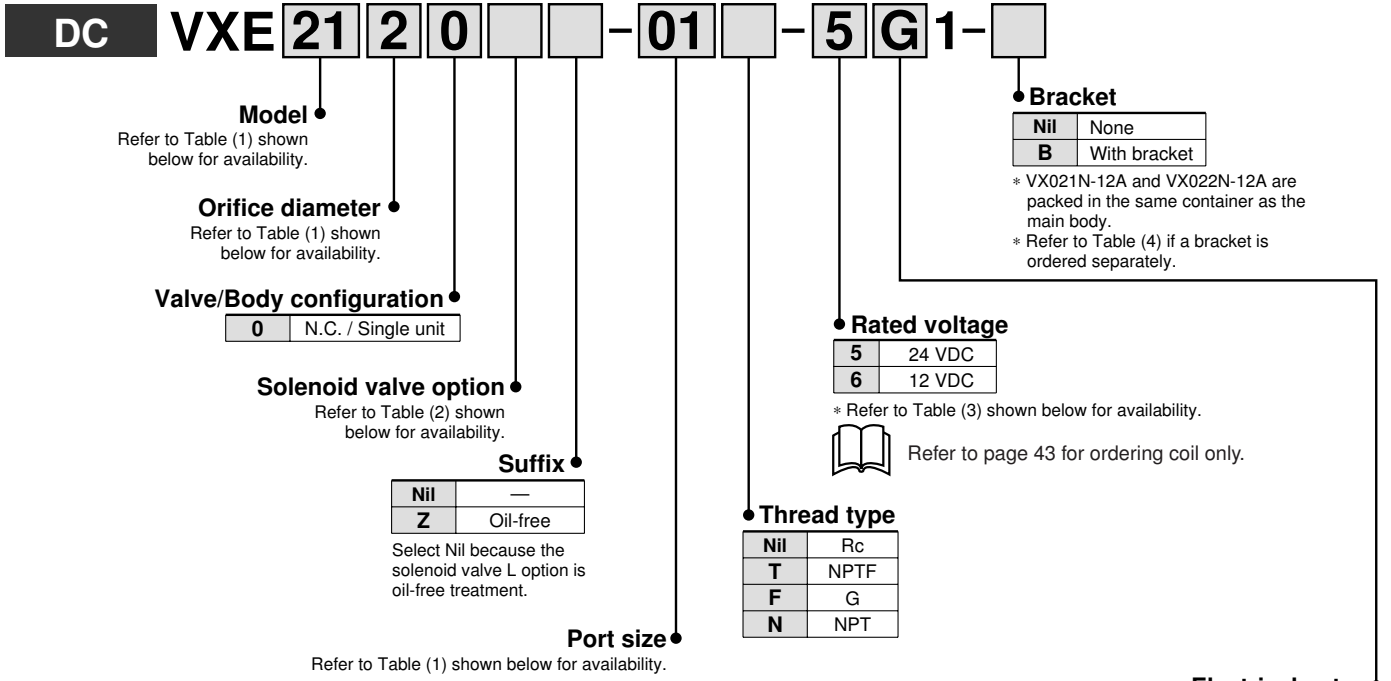


Table (1) Model/Orifice Diameter/Port Size Normally Closed (N.C.)

| Solenoid valve model (Port size) | | | Orifice symbol (diameter) | | | | | | |
|----------------------------------|----------|----------|---------------------------|--------------|--------------|----------------|--------------|--------------|---------------|
| Model | VXE21 | VXE22 | VXE23 | 1 (2 mmø) | 2 (3 mmø) | 3 (4.5 mmø) | 4 (6 mmø) | 5 (8 mmø) | 6 (10 mmø) |
| Port symbol (Port size) | 01 (1/8) | — | — | ● | ● | ● | — | — | — |
| | 02 (1/4) | — | — | ● | ● | ● | — | — | — |
| | — | 02 (1/4) | 02 (1/4) | — | ● | ● | ● | ● | ● |
| | — | 03 (3/8) | 03 (3/8) | — | ● | ● | ● | ● | ● |
| — | 04 (1/2) | 04 (1/2) | — | — | — | — | — | ● | |

Table (3) Rated Voltage – Electrical Option

| Rated voltage | | L (With light) |
|----------------|---------|----------------|
| Voltage symbol | Voltage | |
| 5 | 24 VDC | ● |
| 6 | 12 VDC | — |

Table (2) Solenoid Valve Option

| Option symbol | Seal material | Body material | Note |
|---------------|---------------|-----------------|------|
| Nil | NBR | Brass (C37) | — |
| G | FKM | Stainless steel | |
| L | FKM | Stainless steel | |

Table (4) Bracket Part No.

| Model | Part no. |
|-----------------------|--------------|
| VXE21 $\frac{1}{8}$ 0 | VX021N-12A |
| VXE22 $\frac{3}{4}$ 0 | VX022N-12A |
| VXE23 $\frac{3}{4}$ 0 | |
| VXE22 $\frac{5}{8}$ 0 | VX023N-12A-L |
| VXE23 $\frac{5}{8}$ 0 | |

Dimensions → P. 17 (Single unit)

Model
VXE2
VXED2
VXE22
Specifications
Applications
For Air
For Water
For Oil
Construction
Dimensions

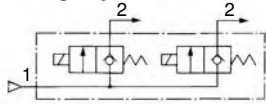
Series VXE21/22/23

For Oil /Manifold

Solenoid Valve for Manifold/Valve Specifications

N.C.

Passage symbol



Common SUP



Normally Closed (N.C.)

| Orifice dia. (mmø) | Model | Max. operating pressure differential (MPa) | Flow characteristics | | Max. system pressure (MPa) |
|--------------------|---------|--|--------------------------------------|--------------|----------------------------|
| | | | Av x 10 ⁻⁶ m ² | Cv converted | |
| 2 | VXE2111 | 1.5 | 4.1 | 0.17 | 3.0 |
| 3 | VXE2121 | 0.5 | 7.9 | 0.33 | |
| | VXE2221 | 1.5 | | | |
| 4.5 | VXE2321 | 3.0 | 15 | 0.61 | |
| | VXE2131 | 0.2 | | | |
| | VXE2231 | 0.35 | | | |
| 6 | VXE2331 | 0.9 | 26 | 1.10 | |
| | VXE2241 | 0.15 | | | |
| | VXE2341 | 0.3 | | | |



• Refer to "Glossary" on page 44 for details on the max. operating pressure differential and the max. system pressure.

Fluid and Ambient Temperature

| Fluid temperature (°C) | Ambient temperature (°C) |
|------------------------------|--------------------------|
| Solenoid valve option symbol | |
| Nil, G, L | -20 to 60 |
| 1 to 60 | |



Note) With no freezing

Valve Leakage

Internal Leakage

| Seal material | Leakage (Water) |
|---------------|----------------------------------|
| NBR, FKM | 0.1 cm ³ /min or less |

External Leakage

| Seal material | Leakage (Water) |
|---------------|----------------------------------|
| NBR, FKM | 0.1 cm ³ /min or less |

How to Order (Solenoid Valve for Manifold)

DC VXE 21 2 1 - 5 G 1

Model • Refer to Table (1) shown below for availability.

Orifice diameter • Refer to Table (1) shown below for availability.

Valve/Body configuration •
1 N.C. (for Manifold)

Solenoid valve option • Refer to Table (2)-(1) shown below for availability.

Suffix •

| | |
|-----|----------|
| Nil | — |
| Z | Oil-free |

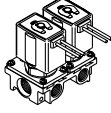
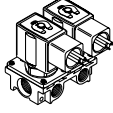
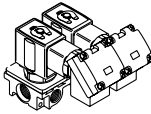
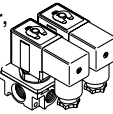
Select Nil because the solenoid valve L option is oil-free treatment.

Rated voltage •


| | |
|---|--------|
| 5 | 24 VDC |
| 6 | 12 VDC |

* Refer to Table (3) shown below for availability.

Electrical entry

| | |
|---|---|
| G-Grommet  | C-Conduit  |
| T -With conduit terminal TL -With conduit terminal and light  | D -DIN terminal DL -DIN terminal with light DO -For DIN terminal (without connector, with gasket)  |

* Refer to Table (3) for available combinations between electrical option (L) and rated voltage.

 Refer to page 43 for ordering coil only.

How to Order Manifold Bases

VVX21 VVX22 VVX23

1 C - 07 - 1

Port size (OUT port)

| | |
|---|-------|
| 1 | Rc1/8 |
| 2 | Rc1/4 |

* IN port sizes are all Rc3/8.

Manifold base

Thread type

| | |
|-----|------|
| Nil | Rc |
| T | NPTF |
| F | G |
| N | NPT |

Number of manifolds

| | |
|----|-------------|
| 02 | 2 stations |
| : | : |
| 10 | 10 stations |

Suffix

| | |
|-----|----------|
| Nil | — |
| Z | Oil-free |

Base/Seal material

* Refer to Table (2)-(2) shown below for availability.

Blanking plate part no.

For VXE21: VVX21-3A

For VXE22: VVX22-3A

For VXE23: VVX23-3A

Seal material

| | |
|-----|------|
| Nil | NBR |
| F | FKM |
| E | EPDM |

Table (1) Model/Orifice Diameter

| Solenoid valve model | Orifice symbol (diameter) | | | |
|----------------------|---------------------------|-----------|-------------|-----------|
| | 1 (2 mmø) | 2 (3 mmø) | 3 (4.5 mmø) | 4 (6 mmø) |
| VXE21 | ● | ● | ● | — |
| VXE22 | — | ● | ● | ● |
| VXE23 | — | ● | ● | ● |

Table (2) Solenoid Valve Option

| Solenoid valve option symbol (1) | Base/Seal material symbol (2) | Body/Base material | Seal material | Note |
|----------------------------------|-------------------------------|--------------------|---------------|-------------------------|
| Nil | C | Brass (C37) | NBR | — |
| G | S | Stainless steel | | |
| L | SF | Stainless steel | FKM | High corrosive/Oil-free |

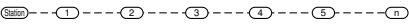
Table (3) Rated Voltage – Electrical Option

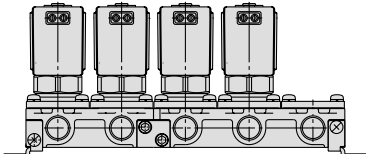
| Rated voltage | | L (With light) |
|----------------|---------|----------------|
| Voltage symbol | Voltage | |
| 5 | 24 VDC | ● |
| 6 | 12 VDC | — |

How to Order Manifold Assemblies (Example)

Enter the valve and blanking plate to be mounted under the manifold base part number.

Example
 VVX211C-05-1 1 set “*” is the symbol for mounting.
 * VXE2111-1G1 4 sets Add an “*” in front of the part numbers
 * VVX21-3A 1 set for solenoid valves, etc. to be mounted.





Enter the product's part number in order, counting the 1st station from the left in the manifold arrangement, when viewing the individual port in front.

Dimensions → P. 19 (Manifold)

Model
VXE2
VXED2
VXE22
Specifications
Applications
For Air
For Water
For Oil
Construction
Dimensions

Series VXE21/22/23

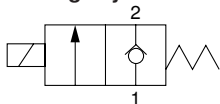
For Oil /Single Unit

⚠ When the fluid is oil.
The dynamic viscosity of the fluid must not exceed 50 mm²/s.

Model/Valve Specifications

N.C.

Passage symbol



Normally Closed (N.C.)

| Port size | Orifice dia. (mmø) | Model | Max. operating pressure differential (MPa) | Flow characteristics | | Max. system pressure (MPa) | Note) Weight (g) | |
|-----------|--------------------|------------|--|--------------------------------------|--------------|----------------------------|------------------|------|
| | | | | Av x 10 ⁻⁶ m ² | Cv converted | | | |
| 1/8 (6A) | 2 | VXE2110-01 | 1.5 | 4.1 | 0.17 | 3.0 | 300 | |
| | 3 | VXE2120-01 | 0.5 | 7.9 | 0.33 | | | |
| | 4.5 | VXE2130-01 | 0.15 | 15 | 0.61 | | | |
| 1/4 (8A) | 2 | VXE2110-02 | 1.5 | 4.1 | 0.17 | 3.0 | 470 | |
| | 3 | VXE2120-02 | 0.5 | 7.9 | 0.33 | | | 620 |
| | | VXE2220-02 | 1.2 | | | | | 300 |
| | | VXE2320-02 | 2.0 | | | 470 | | |
| | 4.5 | VXE2130-02 | 0.15 | 15 | 0.61 | 620 | | |
| | | VXE2230-02 | 0.3 | | | 470 | | |
| | | VXE2330-02 | 0.85 | | | 620 | | |
| | 6 | VXE2240-02 | 0.1 | 26 | 1.10 | 470 | | |
| | | VXE2340-02 | 0.3 | | | 620 | | |
| | 8 | VXE2250-02 | 0.08 | 38 | 1.60 | 560 | | |
| | | VXE2350-02 | 0.2 | | | 700 | | |
| | | VXE2260-02 | 0.03 | | | 46 | 1.90 | 560 |
| 10 | VXE2360-02 | 0.07 | 700 | | | | | |
| 3/8 (10A) | 3 | VXE2220-03 | 1.2 | 7.9 | 0.33 | 3.0 | 470 | |
| | | VXE2320-03 | 2.0 | | | | 620 | |
| | 4.5 | VXE2230-03 | 0.3 | 15 | 0.61 | | 470 | |
| | | VXE2330-03 | 0.85 | | | 620 | | |
| | 6 | VXE2240-03 | 0.1 | 26 | 1.10 | 470 | | |
| | | VXE2340-03 | 0.3 | | | 620 | | |
| | 8 | VXE2250-03 | 0.08 | 38 | 1.60 | 560 | | |
| | | VXE2350-03 | 0.2 | | | 700 | | |
| | 10 | VXE2260-03 | 0.03 | 53 | 2.20 | 560 | | |
| | | VXE2360-03 | 0.07 | | | 700 | | |
| | | 1/2 (15A) | VXE2260-04 | | | 0.03 | 53 | 2.20 |
| | VXE2360-04 | | 0.07 | 700 | | | | |



Note) Weight of grommet type. Add 10 g for conduit, 30 g for DIN terminal, and 60 g for conduit terminal type respectively.

- Refer to "Glossary" on page 44 for details on the max. operating pressure differential and the max. system pressure.

Fluid and Ambient Temperature

| Fluid temperature (°C) | Ambient temperature (°C) |
|------------------------------|--------------------------|
| Solenoid valve option symbol | |
| A, H | -20 to 60 |
| -5 Note) to 60 | |

Note) Dynamic viscosity: 50 mm²/s or less

Valve Leakage

Internal Leakage

| Seal material | Leakage (Oil) |
|---------------|----------------------------------|
| FKM | 0.1 cm ³ /min or less |

External Leakage

| Seal material | Leakage (Oil) |
|---------------|----------------------------------|
| FKM | 0.1 cm ³ /min or less |

How to Order (Single Unit)

DC VXE 21 2 0 A [] - 01 [] - 5 G 1 - []

Model
Refer to Table (1) shown below for availability.

Orifice diameter
Refer to Table (1) shown below for availability.

Valve/Body configuration

| | |
|---|--------------------|
| 0 | N.C. / Single unit |
|---|--------------------|

Solenoid valve option
Refer to Table (2) shown below for availability.

Suffix

| | |
|-----|----------|
| Nil | — |
| Z | Oil-free |

Bracket

| | |
|-----|--------------|
| Nil | None |
| B | With bracket |

* VX021N-12A and VX022N-12A are packed in the same container as the main body.
* Refer to Table (4) if a bracket is ordered separately.

Rated voltage

| | |
|---|--------|
| 5 | 24 VDC |
| 6 | 12 VDC |

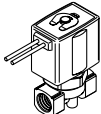
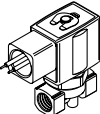
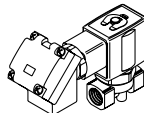
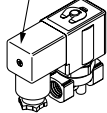
* Refer to Table (3) shown below for availability.
Refer to page 43 for ordering coil only.

Thread type

| | |
|-----|------|
| Nil | Rc |
| T | NPTF |
| F | G |
| N | NPT |

Port size
Refer to Table (1) shown below for availability.

Electrical entry

| | |
|--|---|
| G-Grommet  | C-Conduit  |
| T -With conduit terminal TL -With conduit terminal and light  | D -DIN terminal DL -DIN terminal with light DO -For DIN terminal (without connector, with gasket)  |

* Refer to Table (3) for available combinations between electrical option (L) and rated voltage.

Table (1) Model/Orifice Diameter/Port Size Normally Closed (N.C.)

| Solenoid valve model (Port size) | | | | Orifice symbol (diameter) | | | | | |
|----------------------------------|----------|----------|----------|---------------------------|--------------|----------------|--------------|--------------|---------------|
| Model | VXE21 | VXE22 | VXE23 | 1 (2 mmø) | 2 (3 mmø) | 3 (4.5 mmø) | 4 (6 mmø) | 5 (8 mmø) | 6 (10 mmø) |
| Port symbol (Port size) | 01 (1/8) | — | — | ● | ● | ● | — | — | — |
| | 02 (1/4) | — | — | ● | ● | ● | — | — | — |
| | — | 02 (1/4) | 02 (1/4) | — | ● | ● | ● | ● | ● |
| | — | 03 (3/8) | 03 (3/8) | — | ● | ● | ● | ● | ● |
| — | 04 (1/2) | 04 (1/2) | — | — | — | — | — | — | ● |

Normally Open (N.O.)

| Solenoid valve model (Port size) | | | Orifice symbol (diameter) | | | | |
|----------------------------------|----------|----------|---------------------------|--------------|--------------|----------------|--------------|
| Model | VXE21 | VXE22 | VXE23 | 1 (2 mmø) | 2 (3 mmø) | 3 (4.5 mmø) | 4 (6 mmø) |
| Port symbol (Port size) | 01 (1/8) | — | — | ● | ● | ● | — |
| | 02 (1/4) | — | — | ● | ● | ● | — |
| | — | 02 (1/4) | 02 (1/4) | — | ● | ● | ● |
| | — | 03 (3/8) | 03 (3/8) | — | ● | ● | ● |

Table (3) Rated Voltage – Electrical Option

| Rated voltage | | L (With light) |
|----------------|---------|----------------|
| Voltage symbol | Voltage | |
| 5 | 24 VDC | ● |
| 6 | 12 VDC | — |

Table (2) Solenoid Valve Option

| Option symbol | Seal material | Body material |
|---------------|---------------|-----------------|
| A | FKM | Brass (C37) |
| H | | Stainless steel |

The additives contained in oil are different depending on the type and manufacturers, so the durability of seal materials will vary. For details, please consult with SMC.

Table (4) Bracket Part No.

| Model | Part no. |
|-------------------------------------|--------------|
| VXE21 ¹ / ₈ 0 | VX021N-12A |
| VXE22 ² / ₄ 0 | VX022N-12A |
| VXE23 ² / ₄ 0 | |
| VXE22 ⁵ / ₈ 0 | VX023N-12A-L |
| VXE23 ⁵ / ₈ 0 | |

Dimensions → P. 17 (Single unit)

Model
VXE2
VXED2
VXEZ2
Specifications
Applications
For Air
For Water
For Oil
Construction
Dimensions

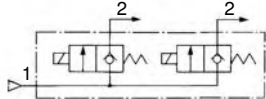
For Oil /Manifold

⚠ When the fluid is oil.
The dynamic viscosity of the fluid must not exceed 50 mm²/s.

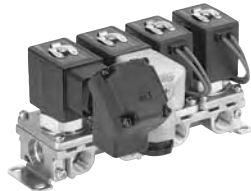
Solenoid Valve for Manifold/Valve Specifications

N.C.

Passage symbol



Common SUP



Normally Closed (N.C.)

| Orifice dia. (mmø) | Model | Max. operating pressure differential (MPa) | Flow characteristics | | Max. system pressure (MPa) |
|--------------------|---------|--|--------------------------------------|--------------|----------------------------|
| | | | Av x 10 ⁻⁶ m ² | Cv converted | |
| 2 | VXE2111 | 1.5 | 4.1 | 0.17 | 3.0 |
| 3 | VXE2121 | 0.5 | 7.9 | 0.33 | |
| | VXE2221 | 1.2 | | | |
| | VXE2321 | 2.0 | | | |
| 4.5 | VXE2131 | 0.15 | 15 | 0.61 | |
| | VXE2231 | 0.3 | | | |
| | VXE2331 | 0.85 | | | |
| 6 | VXE2241 | 0.1 | 26 | 1.10 | |
| | VXE2341 | 0.3 | | | |



• Refer to "Glossary" on page 44 for details on the max. operating pressure differential and the max. system pressure.

Fluid and Ambient Temperature

| Fluid temperature (°C) | Ambient temperature (°C) |
|------------------------------|--------------------------|
| Solenoid valve option symbol | |
| A, H | |
| -5 ^{Note)} to 60 | -20 to 60 |



Note) Dynamic viscosity: 50 mm²/s or less

Valve Leakage

Internal Leakage

| Seal material | Leakage (Oil) |
|---------------|----------------------------------|
| FKM | 0.1 cm ³ /min or less |

External Leakage

| Seal material | Leakage (Oil) |
|---------------|----------------------------------|
| FKM | 0.1 cm ³ /min or less |

How to Order (Solenoid Valve for Manifold)

DC VXE 21 2 1 A - 5 G 1

- Model**
Refer to Table (1) shown below for availability.
- Orifice diameter**
Refer to Table (1) shown below for availability.
- Valve/Body configuration**
1 N.C. (for Manifold)
- Solenoid valve option**
Refer to Table (2)-(1) shown below for availability.
- Suffix**

| | |
|-----|----------|
| Nil | — |
| Z | Oil-free |
- Rated voltage**

| | |
|---|--------|
| 5 | 24 VDC |
| 6 | 12 VDC |

* Refer to Table (3) shown below for availability.

Refer to page 43 for ordering coil only.

Electrical entry

| | |
|---|--|
| G-Grommet | C-Conduit |
| T -With conduit terminal TL -With conduit terminal and light | D -DIN terminal DL -DIN terminal with light DO -For DIN terminal (without connector, with gasket) |

How to Order Manifold Bases

VVX21 VVX22 VVX23 1 - CF - 07 - 1

- Port size (OUT port)**

| | |
|---|-------|
| 1 | Rc1/8 |
| 2 | Rc1/4 |

* IN port sizes are all Rc3/8.
- Thread type**

| | |
|-----|------|
| Nil | Rc |
| T | NPTF |
| F | G |
| N | NPT |
- Number of manifolds**

| | |
|----|-------------|
| 02 | 2 stations |
| ⋮ | ⋮ |
| 10 | 10 stations |
- Suffix**

| | |
|-----|----------|
| Nil | — |
| Z | Oil-free |
- Base/Seal material**
* Refer to Table (2)-(2) shown below for availability.
- Manifold base**
- Blanking plate part no.**
For VXE21: VVX21-3A-F
For VXE22: VVX22-3A-F
For VXE23: VVX23-3A-F
- Seal material: FKM**

Table (1) Model/Orifice Diameter

| Solenoid valve model | Orifice symbol (diameter) | | | |
|----------------------|---------------------------|-----------|-------------|-----------|
| | 1 (2 mmø) | 2 (3 mmø) | 3 (4.5 mmø) | 4 (6 mmø) |
| VXE21 | ● | ● | ● | — |
| VXE22 | — | ● | ● | ● |
| VXE23 | — | ● | ● | ● |

Table (2) Solenoid Valve Option

| Solenoid valve option symbol (1) | Base/Seal material symbol (2) | Body/Base material | Seal material |
|----------------------------------|-------------------------------|--------------------|---------------|
| A | CF | Brass (C37) | FKM |
| H | SF | Stainless steel | |

The additives contained in oil are different depending on the type and manufacturers, so the durability of seal materials will vary. For details, please consult with SMC.

Table (3) Rated Voltage – Electrical Option

| Rated voltage | | L (With light) |
|----------------|---------|----------------|
| Voltage symbol | Voltage | |
| 5 | 24 VDC | ● |
| 6 | 12 VDC | — |

How to Order Manifold Assemblies (Example)

Enter the valve and blanking plate to be mounted under the manifold base part number.

Example
 VVX211CF-05-1..... 1 set “*” is the symbol for mounting.
 * VXE2111A-1G1 4 sets Add an “*” in front of the part numbers for solenoid valves, etc. to be mounted.
 * VVX21-3A-F 1 set

Enter the product's part number in order, counting the 1st station from the left in the manifold arrangement, when viewing the individual port in front.

Dimensions → P. 19 (Manifold)

Model
VXE2
VXED2
VXE22
Specifications
Applications
For Air
For Water
For Oil
Dimensions
Construction

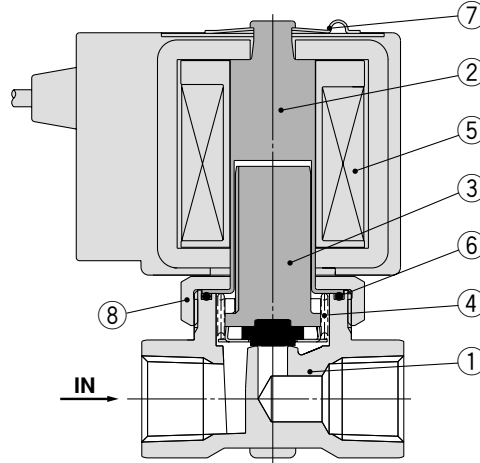
Series VXE21/22/23

For Air/Water/Oil

Construction: Single Unit

Normally closed (N.C.)

Body material: Brass (C37), Stainless steel



Component Parts

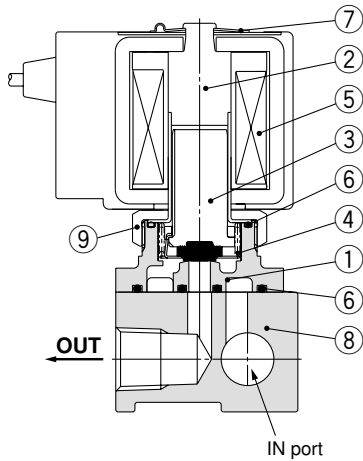
| No. | Description | Material | |
|-----|--------------------------|---|------------------------------------|
| | | Brass (C37) body specification | Stainless steel body specification |
| 1 | Body | Brass (C37) | Stainless steel |
| 2 | Tube assembly | Stainless steel | |
| 3 | Armature assembly | (NBR, FKM, EPDM, PTFE) Stainless steel, PPS | |
| 4 | Return spring | Stainless steel | |
| 5 | Solenoid coil | — | |
| 6 | O-ring | (NBR, FKM, EPDM, PTFE) | |
| 7 | Clip | SK | |
| 8 | Nut | Brass (C37) | Brass (C37), Ni plated |

The materials in parentheses are seal materials.

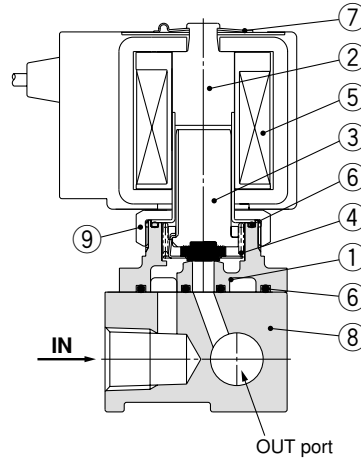
Construction: Manifold

Normally closed (N.C.)
 Base material: Aluminum
 Fluid: Air

Common SUP

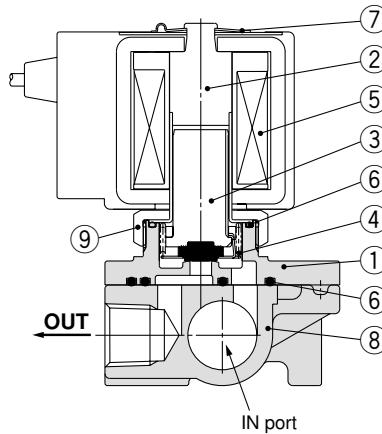


Individual SUP



Base material: Brass (C37), Stainless steel
 Fluid: Water/Oil

Common SUP



Component Parts

| No. | Description | Material | | |
|-----|-------------------|---|--------------------------------|------------------------------------|
| | | Aluminum base specification | Brass (C37) base specification | Stainless steel base specification |
| 1 | Body | Aluminum | Brass (C37) | Stainless steel |
| 2 | Tube assembly | Stainless steel | | |
| 3 | Armature assembly | (NBR, FKM, EPDM, PTFE) Stainless steel, PPS | | |
| 4 | Return spring | Stainless steel | | |
| 5 | Solenoid coil | — | | |
| 6 | O-ring | (NBR, FKM, EPDM, PTFE) | | |
| 7 | Clip | SK | | |
| 8 | Base | Aluminum | Brass (C37) | Stainless steel |
| 9 | Nut | Brass (C37) (Ni plated) | Brass (C37) | Brass (C37), Ni plated |

The materials in parentheses are seal materials.

Model

VXE2

VXED2

VXEZ2

Specifications

Applica-
tions

For Air

For Water

For Oil

Construction

Dimensions

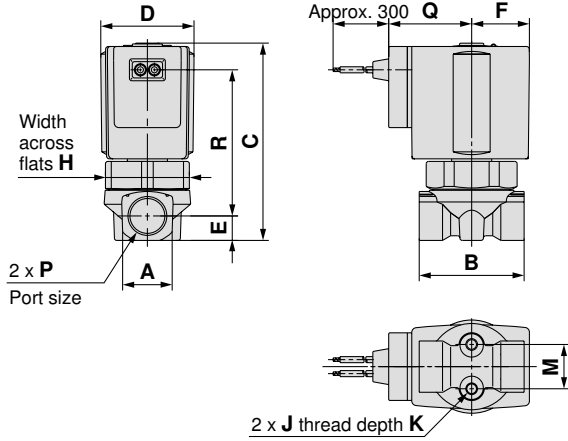
Series VXE21/22/23

For Air/Water/Oil

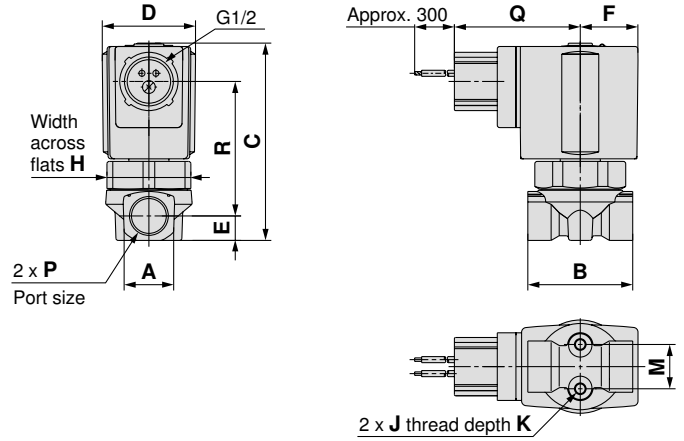
Dimensions: Single Unit/Body Material: Brass (C37), Stainless Steel

VXE21□0/22□0/23□0

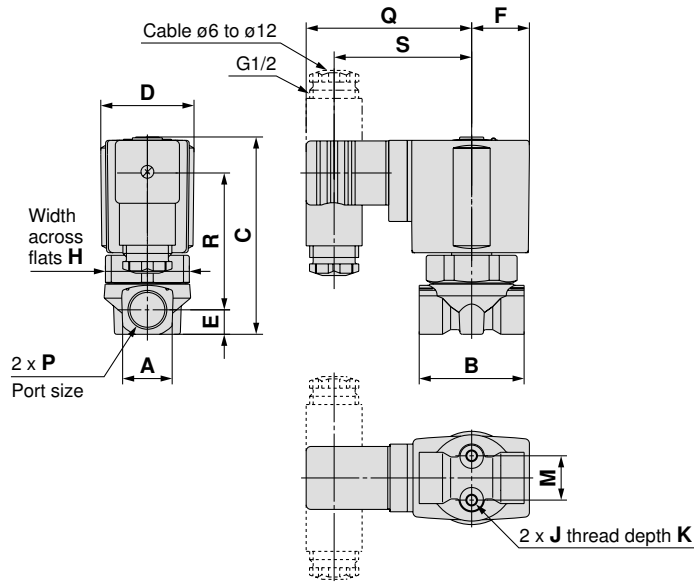
Grommet: G



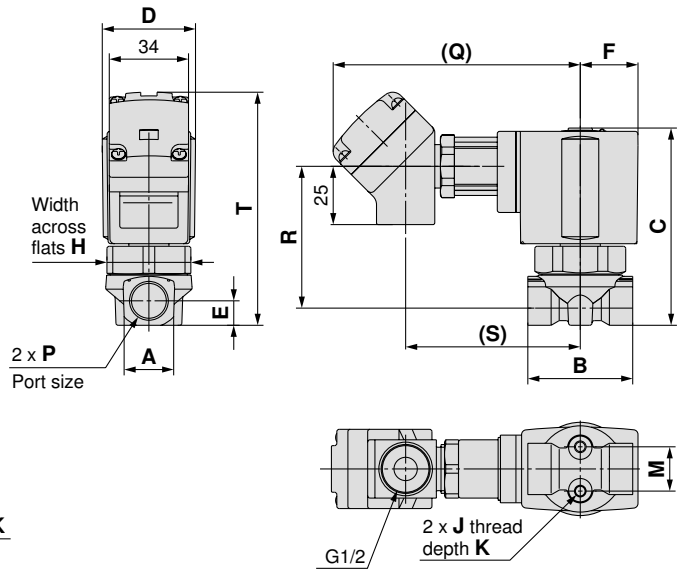
Conduit: C



DIN terminal: D



Conduit terminal: T



(mm)

| Model | Orifice diameter | Port size P | A | B | C | D | E | F | H | Mounting dimension | | Electrical entry | | | | | | | | | | | |
|---------|------------------|---------------|----|----|------|----|------|------|----|--------------------|---|------------------|----|---------|------|--------------|------|----|------|------------------|----|------|------|
| | | | | | | | | | | | | Grommet | | Conduit | | DIN terminal | | | | Conduit terminal | | | |
| | | | | | | | | | | J | K | M | Q | R | Q | R | Q | R | S | Q | R | S | T |
| VXE21□0 | ø2, ø3, ø4.5 | 1/8, 1/4 | 18 | 40 | 68 | 30 | 9 | 19.5 | 27 | M4 | 6 | 12.8 | 30 | 46 | 48.5 | 41 | 65.5 | 42 | 53.5 | 100.5 | 41 | 69.5 | 82 |
| VXE22□0 | ø3, ø4.5, ø6 | 1/4, 3/8 | 22 | 45 | 78 | 35 | 10.5 | 22.5 | 32 | M5 | 8 | 19 | 33 | 56 | 51.5 | 51 | 68.5 | 52 | 56.5 | 103.5 | 51 | 72.5 | 93.5 |
| VXE22□0 | ø8, ø10 | 1/4, 3/8, 1/2 | 30 | 50 | 85 | | | | | M5 | 8 | 23 | 33 | 59 | 51.5 | 54 | 68.5 | 55 | 56.5 | 103.5 | 54 | 72.5 | 100 |
| VXE23□0 | ø3, ø4.5, ø6 | 1/4, 3/8 | 22 | 45 | 85.5 | 40 | 10.5 | 25 | 36 | M5 | 8 | 19 | 36 | 62 | 54 | 57 | 71 | 58 | 59 | 106 | 57 | 75 | 99.5 |
| VXE23□0 | ø8, ø10 | 1/4, 3/8, 1/2 | 30 | 50 | 92 | | | | | M5 | 8 | 23 | 36 | 65 | 54 | 60 | 71 | 61 | 59 | 106 | 60 | 75 | 106 |

Dimensions: Single Unit/Body Material: Brass (C37), Stainless Steel

VXE21□0/22□0/23□0

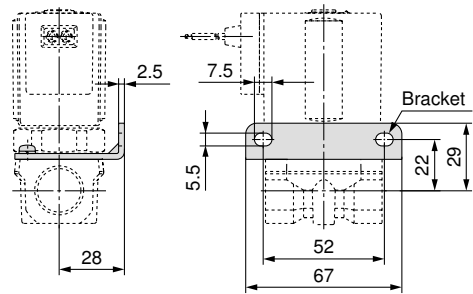
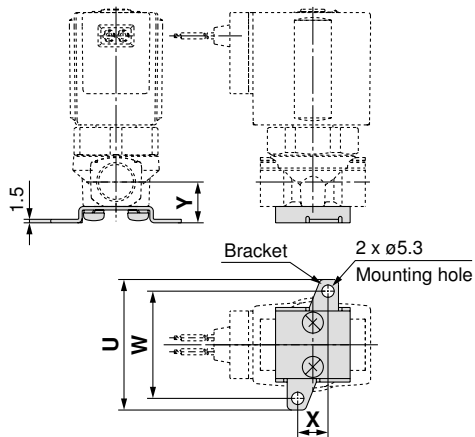
Specifications with bracket

Orifice: $\phi 2$, $\phi 3$, $\phi 4.5$, $\phi 6$

(Packed in the same container)

Orifice: $\phi 8$, $\phi 10$

(Assembled at the shipment)



(mm)

| Model N.C. | Orifice diameter | Port size P | Bracket mounting dimension | | | |
|---------------|----------------------------------|----------------|----------------------------|----|----|------|
| | | | U | W | X | Y |
| VXE21□0 | $\phi 2$, $\phi 3$, $\phi 4.5$ | 1/8, 1/4 | 46 | 36 | 11 | 15 |
| VXE22□0 | $\phi 3$, $\phi 4.5$, $\phi 6$ | 1/4, 3/8 | 56 | 46 | 13 | 17.5 |
| VXE22□0 | $\phi 8$, $\phi 10$ | 1/4, 3/8, 1/2 | — | — | — | — |
| VXE23□0 | $\phi 3$, $\phi 4.5$, $\phi 6$ | 1/4, 3/8 | 56 | 46 | 13 | 17.5 |
| VXE23□0 | $\phi 8$, $\phi 10$ | 1/4, 3/8, 1/2 | — | — | — | — |

Model

VXE2

VXED2

VXEZ2

Specifications

Applications

For Air

For Water

For Oil

Construction

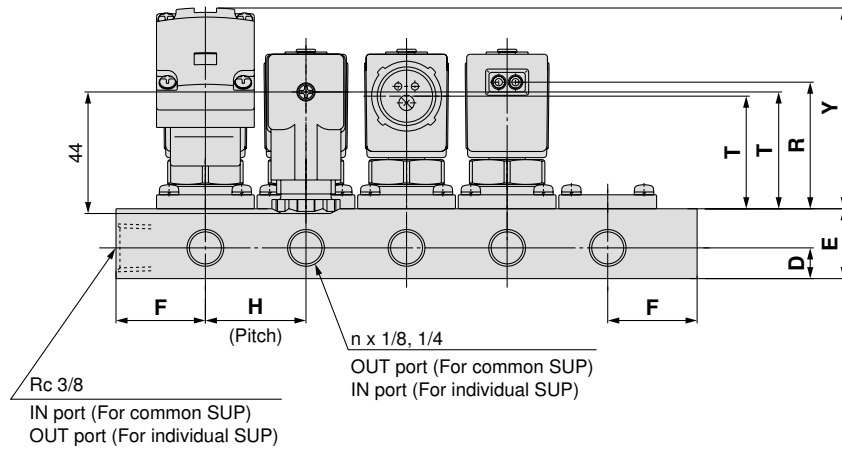
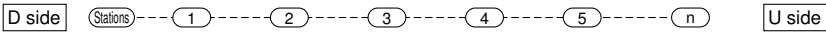
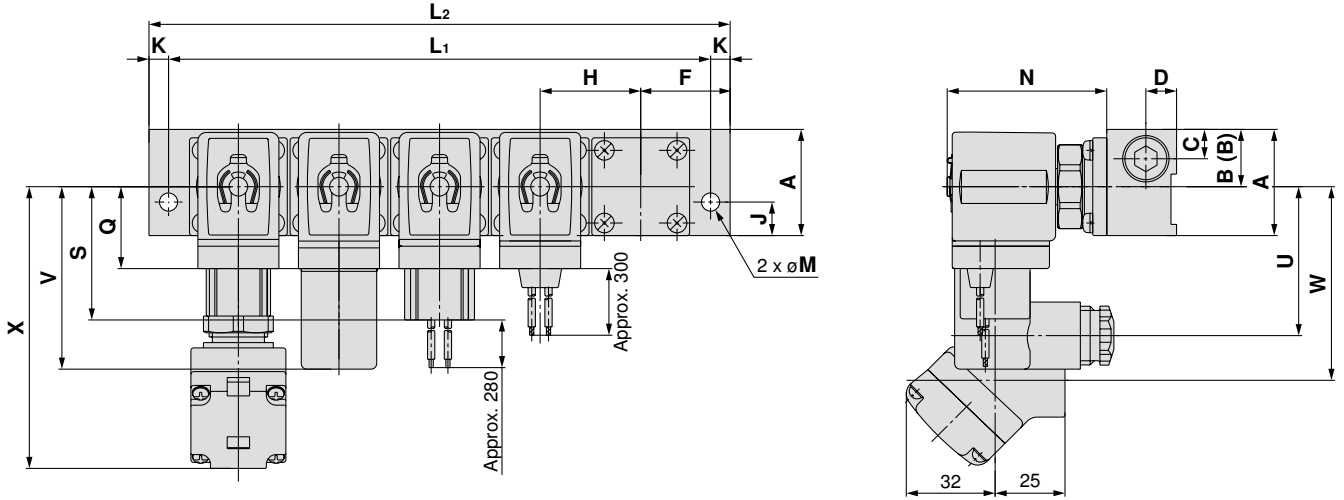
Dimensions

Series VXE21/22/23

For Air

Dimensions: Manifold/Base Material: Aluminum

Normally closed (N.C.): VXE21/22/23



(mm)

| Model | Dimension | n (stations) | | | | | | | | |
|--------|----------------|--------------|-----|-----|-----|-----|-----|-----|-----|-----|
| | | 2 | 3 | 4 | 5 | 6 | 7 | 8 | 9 | 10 |
| VVXE21 | L ₁ | 86 | 122 | 158 | 194 | 230 | 266 | 302 | 338 | 374 |
| | L ₂ | 100 | 136 | 172 | 208 | 244 | 280 | 316 | 352 | 388 |
| VVXE22 | L ₁ | 108 | 154 | 200 | 246 | 292 | 338 | 384 | 430 | 476 |
| VVXE23 | L ₂ | 126 | 172 | 218 | 264 | 310 | 356 | 402 | 448 | 494 |

(mm)

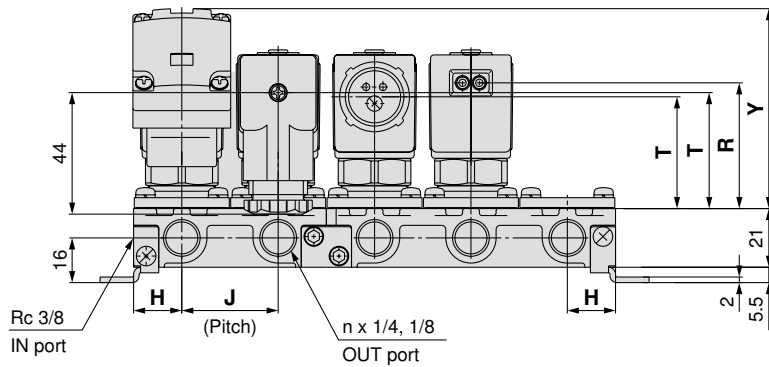
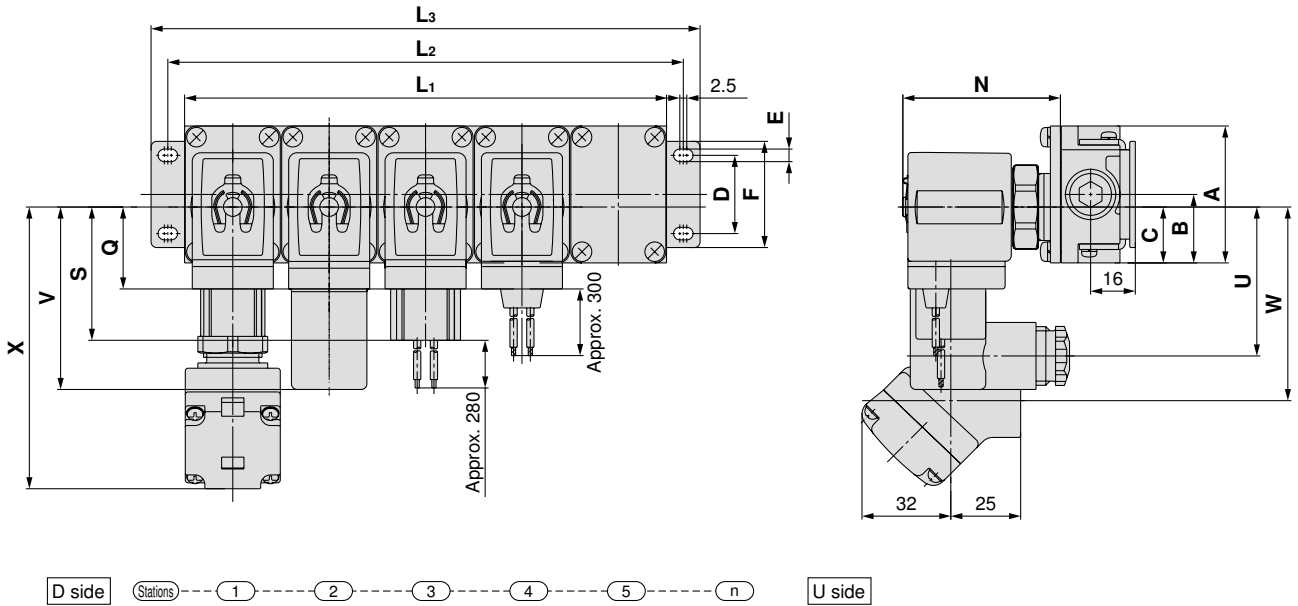
| Model | A | B | (B) Individual SUP | C | D | E | F | H | J | K | M | N | Electrical entry | | | | | | | | | |
|--------|----|------|--------------------------|------|----|----|----|----|----|---|-----|------|------------------|------|---------|----|--------------|------|----|------------------|-------|----|
| | | | | | | | | | | | | | Grommet | | Conduit | | DIN terminal | | | Conduit terminal | | |
| | | | | | | | | | | | | | Q | R | S | T | U | V | T | W | X | Y |
| VVXE21 | 38 | 20.5 | 17.5 | 10.5 | 11 | 25 | 32 | 36 | 12 | 7 | 6.5 | 57.5 | 30 | 44.5 | 48.5 | 40 | 53.5 | 65.5 | 41 | 69.5 | 100.5 | 72 |
| VVXE22 | 49 | 26.5 | 22.5 | 13 | 13 | 30 | 40 | 46 | 15 | 9 | 8.5 | 66.5 | 33 | 54.5 | 51.5 | 50 | 56.5 | 68.5 | 51 | 72.5 | 103.5 | 82 |
| VVXE23 | 49 | 26.5 | 22.5 | 13 | 13 | 30 | 40 | 46 | 15 | 9 | 8.5 | 71.5 | 36 | 59 | 54 | 54 | 59 | 71 | 55 | 75 | 106 | 86 |

Direct Operated 2 Port Solenoid Valve *Series VXE21/22/23*

For Water/Oil

Dimensions: Manifold/Base Material: Brass (C37), Stainless Steel

VXE21/22/23



(mm)

| Model | Dimension | n (stations) | | | | | | | | | |
|-----------------------|----------------|----------------|----------------|----------------|-------------------------|----------------|-----------------------------|-----------------------------|----------------|---------------------------------|--|
| | | 2 | 3 | 4 | 5 | 6 | 7 | 8 | 9 | 10 | |
| VXE21 | L ₁ | 69 | 103.5 | 138 | 172.5 | 207 | 241.5 | 276 | 310.5 | 345 | |
| | L ₂ | 81 | 115.5 | 150 | 184.5 | 219 | 253.5 | 288 | 322.5 | 357 | |
| | L ₃ | 93 | 127.5 | 162 | 196.5 | 231 | 265.5 | 300 | 334.5 | 369 | |
| VXE22 | L ₁ | 77 | 115.5 | 154 | 192.5 | 231 | 269.5 | 308 | 346.5 | 385 | |
| | L ₂ | 89 | 127.5 | 166 | 204.5 | 243 | 281.5 | 320 | 358.5 | 397 | |
| | L ₃ | 101 | 139.5 | 178 | 216.5 | 255 | 293.5 | 332 | 370.5 | 409 | |
| VXE23 | L ₁ | 83 | 124.5 | 166 | 207.5 | 249 | 290.5 | 332 | 373.5 | 415 | |
| | L ₂ | 95 | 136.5 | 178 | 219.5 | 261 | 302.5 | 344 | 385.5 | 427 | |
| | L ₃ | 107 | 148.5 | 190 | 231.5 | 273 | 314.5 | 356 | 397.5 | 439 | |
| Manifold construction | | 2 stations x 1 | 3 stations x 1 | 2 stations x 2 | 2 stations + 3 stations | 3 stations x 2 | 2 stations x 2 + 3 stations | 2 stations + 3 stations x 2 | 3 stations x 3 | 2 stations x 2 + 3 stations x 2 | |

(mm)

| Model | A | B | C | D | E | F | H | J | N | Electrical entry | | | | | | | | | |
|-------|----|------|------|----|-----|----|------|------|------|------------------|------|---------|------|--------------|------|------|------------------|-------|----|
| | | | | | | | | | | Grommet | | Conduit | | DIN terminal | | | Conduit terminal | | |
| | | | | | | | | | | Q | R | S | T | U | V | T | W | X | Y |
| VXE21 | 49 | 24.5 | 20 | 28 | 4.5 | 38 | 17.3 | 34.5 | 56 | 30 | 43 | 48.5 | 38 | 53.5 | 65.5 | 39 | 69.5 | 100.5 | 70 |
| VXE22 | 57 | 28.5 | 25.5 | 30 | 5.5 | 42 | 19.3 | 38.5 | 64.5 | 33 | 52.5 | 51.5 | 47.5 | 56.5 | 68.5 | 48.5 | 72.5 | 103.5 | 80 |
| VXE23 | 57 | 28.5 | 25.5 | 30 | 5.5 | 42 | 20.8 | 41.5 | 72.5 | 36 | 60 | 54 | 55 | 59 | 71 | 56 | 75 | 106 | 87 |

Model

VXE2

VXED2

VXE2

Specifications

Applications

For Air

For Water

For Oil

Construction

Dimensions