

! Contact our sales office for delivery dates and prices as this is a special model.

Specialized Product **P.G.** Point to Group information

# Pilot Check Valve with State Detection

## XT34-303-□

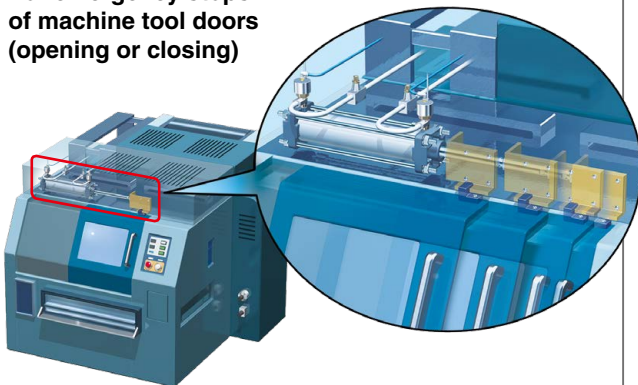
### Features

- The use of positive overlap ensures that signals are output only after the valve has closed completely.  
\* Positive overlap: Structure that ensures a completely closed state by slightly displacing the position of the valve after it has fully closed (to eliminate the effects of hysteresis)
- The open or closed position of the check valve is detected by the auto switch.
- Wide size variations  
Body size: 5 types  
Port size: M5, G1/8, G1/4, G3/8, G1/2

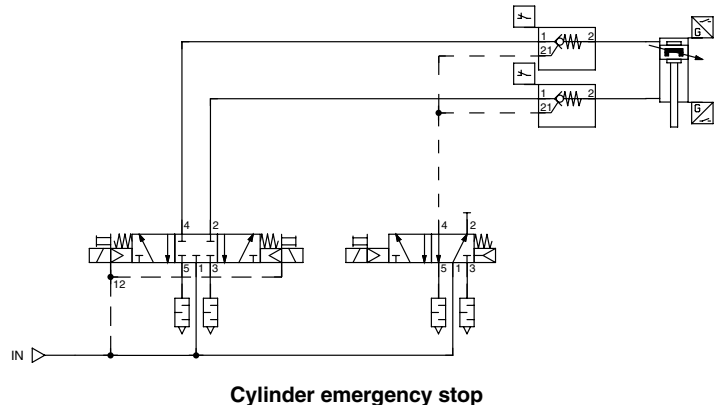


### Application Example

For emergency stops of machine tool doors (opening or closing)



### Circuit Example



### Caution

To ensure the safest possible operation of this product, please be sure to thoroughly read the "Safety Instructions" in our "Best Pneumatics" catalog before use.

SMC Corporation 4-14-1, SOTO-KANDA, CHIYODA-KU, TOKYO 101-0021, JAPAN URL: <http://www.smcworld.com>  
©2018 SMC Corporation All Rights Reserved



SP173X-020E  
P: WX