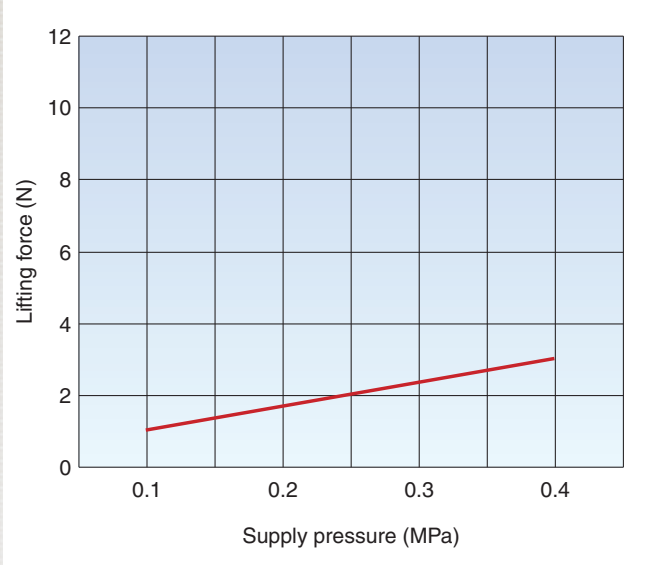
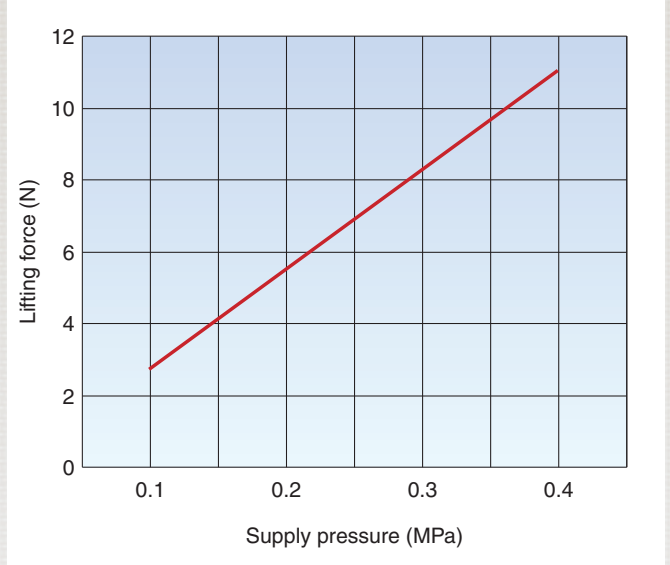


Lifting Force

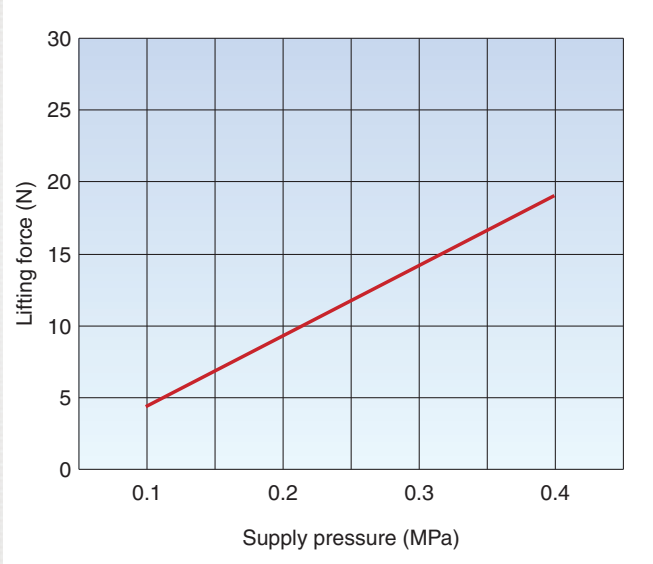
XT661-2A



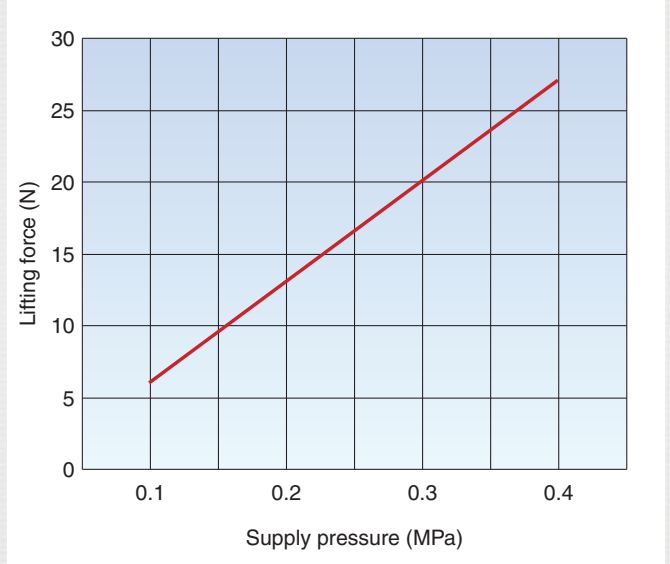
XT661-4A



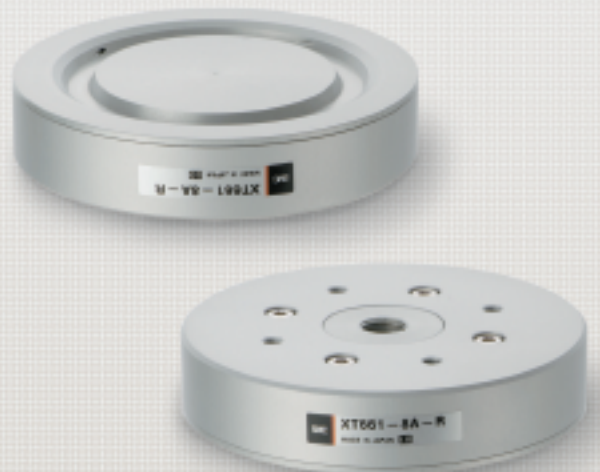
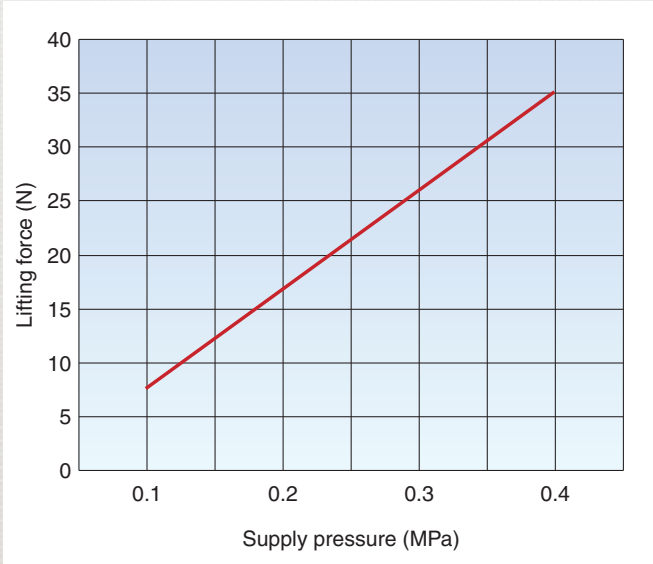
XT661-6A



XT661-8A



XT661-10A



How to Order

XT661-4A-R

Outer body diameter

2A	20 mm
4A	40 mm
6A	60 mm
8A	80 mm
10A	100 mm

Direction of whirling air

R	Clockwise
L	Counterclockwise

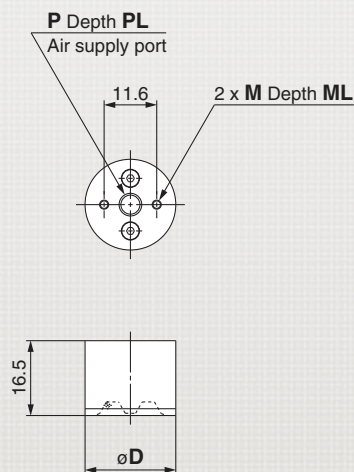
Specifications

Outer body diameter (mm)	20	40	60	80	100
Piping port size	M5 x 0.8			Rc1/8	
Fluid	Air*				
Operating pressure	0.01 to 0.5 MPa				
Proof pressure	0.75 MPa				
Ambient and operating temperature	-5 to 60°C (with no condensation)				
Grease	Grease-free				

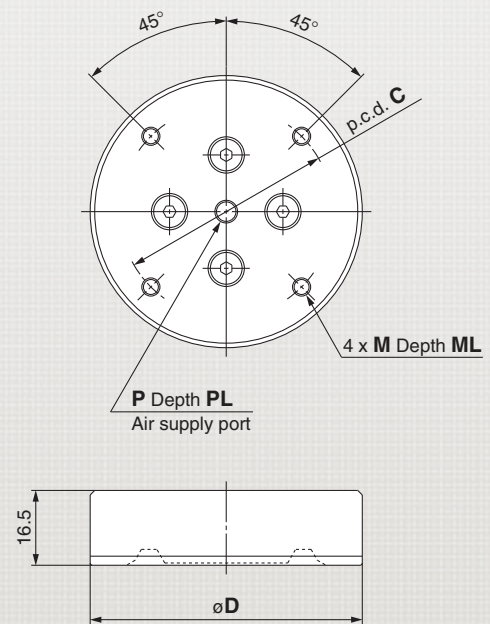
* Air purification rating: JIS B 8392-1 (ISO8573-1) Quality Degree 4, 4, 2

Dimensions

XT661-20-R (L)



XT661-□-R (L)



(mm)

Model	P	PL	M	ML	C	D
XT661-20-R (L)	M5 x 0.8	5	M2 x 0.4	3.2	—	20
XT661-40-R (L)	M5 x 0.8	5	M4 x 0.7	5	32.8	40
XT661-60-R (L)	M5 x 0.8	5	M4 x 0.7	5	47	60
XT661-80-R (L)	Rc1/8	—	M4 x 0.7	5	47	80
XT661-100-R (L)	Rc1/8	—	M4 x 0.7	5	47	100

Provide a guide in accordance with the application and/or configuration of a workpiece.

① **Holding/Positioning a Workpiece**

Due to non-contact, a workpiece may slide during conveyance.
To hold the workpiece, provide a guide, etc. for the side of the workpiece.

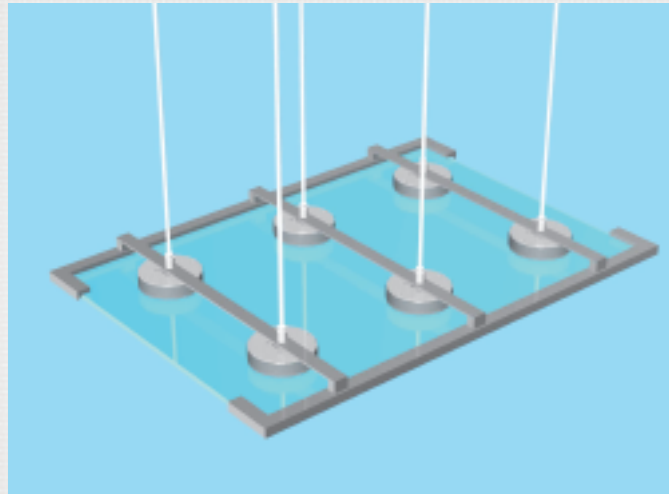
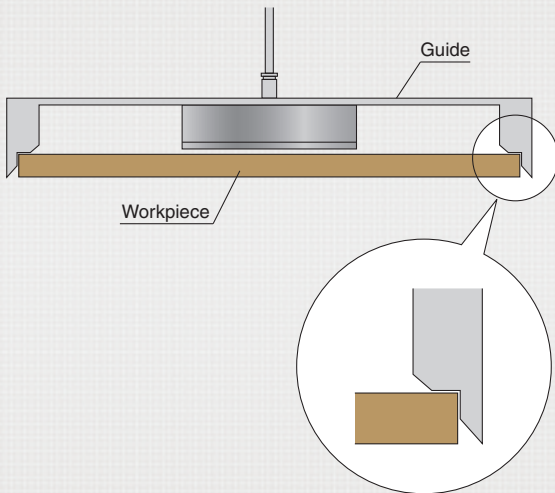
② **Preventing Contact**

Depending on the operating conditions, the workpiece surface may contact the pad when lifted.
To prevent contact, provide a guide to distance the workpiece.

③ **Preventing Rotation**

- 1) When using a single pad, the workpiece tends to rotate due to the cyclone effect.
Provide a guide to prevent the workpiece from rotating.
- 2) When using more than one pad, use even numbered, clockwise or counterclockwise whirling pads.
This can prevent the workpiece from rotating.

Example of Guide Installation



• Example of Vacuum Pad Application

The cyclone pad can reduce the amount of surface contact while fixing the workpiece.

