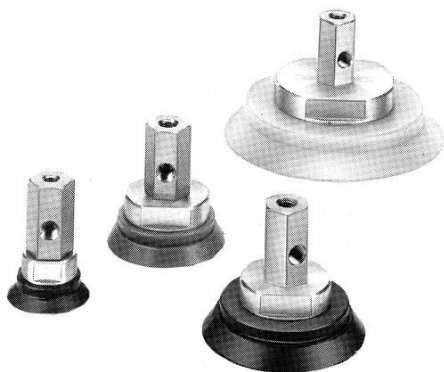


Vacuum Pad: Large/Heavy Duty Type

Lateral Vacuum Entry

Without Buffer

Series ZPX



Specifications

Mounting	Vacuum entry direction		Lateral
	Connection		Female thread
	Thread dia.	ø40, ø50	M8 x 1.25, M10 x 1.5
		ø63, ø80	M10 x 1.5, M12 x 1.75
		ø100, ø125	M10 x 1.5, M12 x 1.75
Vacuum entry port		Rc 1/8	

Pad Type

Pad diameter (mm)	ø40, ø50, ø63, ø80, ø100, ø125
Material (Color)	NBR (Black), Silicon rubber (White), Urethane rubber (Brown), Fluoro rubber (Black with mark F), EPR (Black with mark E)
Durometer	NBR/Silicone rubber/EPR (50°), Urethane/Fluoro rubber (60°)

Weight

(g)

Pad dia.	Silicon rubber	Urethane rubber	Fluoro rubber	EPR
ø40	-1	0	5	-1
ø50	-1	0	8	0
ø63	-2	0	16	0
ø80	-3	1	27	-1
ø100	-5	1	53	-1
ø125	-8	3	84	0

Weight (NBR)

Model	Weight (g)	Model	Weight (g)
ZPX40H□-B01-B8	148	ZPX100H□-B01-B10	418
ZPX40H□-B01-B10	150	ZPX100H□-B01-B12	414
ZPX50H□-B01-B8	160	ZPX125H□-B01-B10	482
ZPX50H□-B01-B10	158	ZPX125H□-B01-B12	478
ZPX63H□-B01-B10	229		
ZPX63H□-B01-B12	219		
ZPX80H□-B01-B10	258		
ZPX80H□-B01-B12	254		

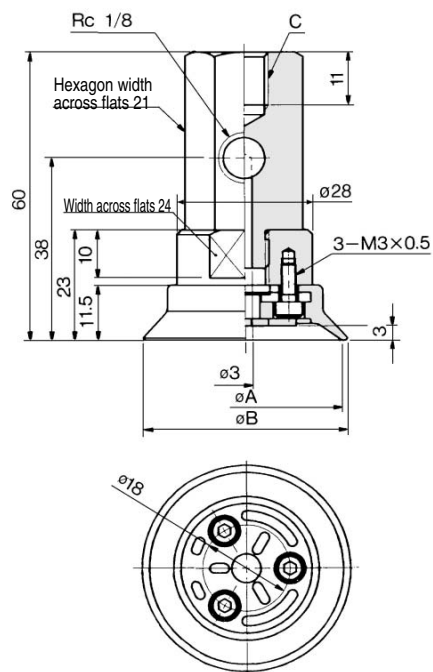
Add or deduct the weight shown in the table on the left for other materials.

How to Order

ZPX 40 H N - B01 - B8			
Pad diameter (mm)	40	ø40	
	50	ø50	
	63	ø63	
	80	ø80	
	100	ø100	
	125	ø125	
Mounting thread	B8	M8 x 1.25	●
	B10	M10 x 1.5	●
	B12	M12 x 1.75	—
			●
Vacuum entry	B01	Rc 1/8	
Pad type		Material	
H		N	NBR
		S	Silicon rubber
		U	Urethane rubber
		F	Fluoro rubber
		E	EPR

Series ZPX

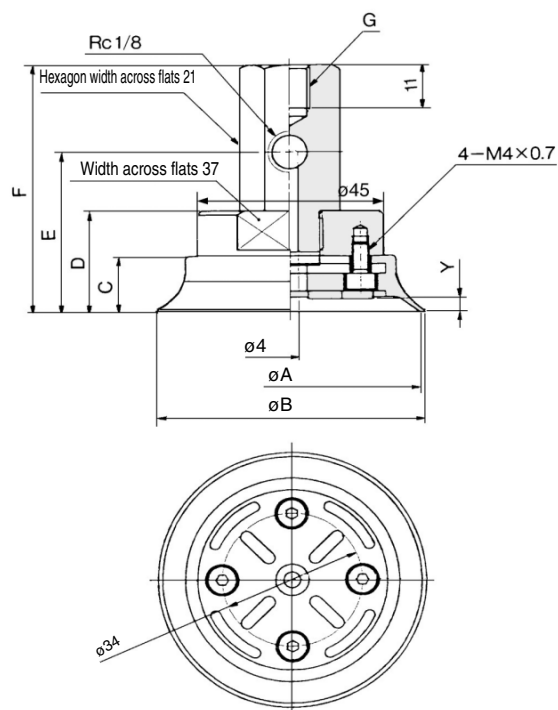
ZPX₄₀⁵⁰ H□-B01-B□ (Female thread)



(mm)

Model	øA	øB	C
ZPX40H□-B01-B8	40	42	M8 x 1.25
ZPX40H□-B01-B10	40	42	M10 x 1.5
ZPX50H□-B01-B8	50	52	M8 x 1.25
ZPX50H□-B01-B10	50	52	M10 x 1.5

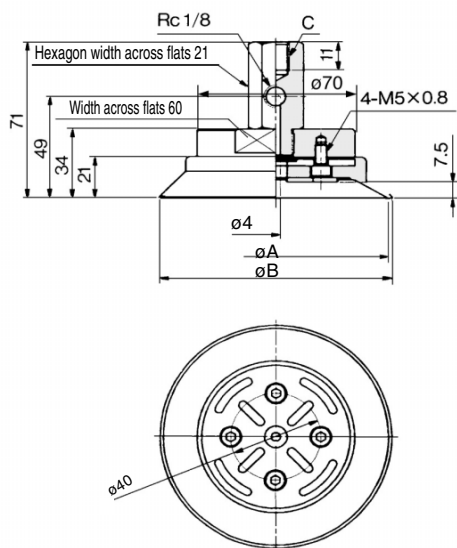
ZPX₆₃⁸⁰ H□-B01-B□ (Female thread)



(mm)

Model	øA	øB	C	D	E	F	Y	G
ZPX63H□-B01-B10	63	65	14.5	26	41	63	3.5	M10 x 1.5
ZPX63H□-B01-B12	63	65	14.5	26	41	63	3.5	M12 x 1.75
ZPX80H□-B01-B10	80	82	16.5	28	43	65	4.5	M10 x 1.5
ZPX80H□-B01-B12	80	82	16.5	28	43	65	4.5	M12 x 1.75

ZPX₁₀₀¹²⁵ H□-B01-B□ (Female thread)



(mm)

Model	øA	øB	C
ZPX100H□-B01-B10	100	103	M10 x 1.5
ZPX100H□-B01-B12	100	103	M12 x 1.75
ZPX125H□-B01-B10	125	128	M10 x 1.5
ZPX125H□-B01-B12	125	128	M12 x 1.75