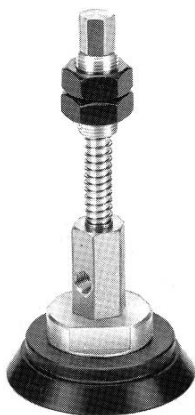


Vacuum Pad: Large/Heavy Duty Type Lateral Vacuum Entry With Buffer

Series ZPX



Specifications

| | | | |
|-------------------|------------------------|-------------|-----------|
| Mounting | Vacuum entry direction | Vertical | |
| | Connection | Male thread | |
| | Thread dia. | ø40, ø50 | M18 x 1.5 |
| | | ø63, ø80 | M18 x 1.5 |
| ø100, ø125 | | M22 x 1.5 | |
| Vacuum entry port | | Rc 1/8 | |

| | | |
|---------------|------------|-----------------------------|
| Buffer type | | Rotating (J) |
| Buffer stroke | ø40 to ø80 | 25 mm, 50 mm, 75 mm |
| | ø100, ø125 | 25 mm, 50 mm, 75 mm, 100 mm |

Pad Type

| | |
|-------------------|--------------------------------------------------------------------------------------------------------------------------------------------------------------------------|
| Pad diameter (mm) | ø40, ø50, ø63, ø80, ø100, ø125 |
| Material (Color) | NBR (Black), Silicon rubber (White), Urethane rubber (Brown), Fluoro rubber (Black with mark $\text{\textcircled{F}}$), EPR (Black with mark $\text{\textcircled{E}}$) |
| Durometer | NBR/Silicone rubber/EPR (50°), Urethane/Fluoro rubber (60°) |

Weight

(g)

| Pad dia. | Silicon rubber | Urethane rubber | Fluoro rubber | EPR |
|----------|----------------|-----------------|---------------|-----|
| ø40 | -1 | 0 | 5 | -1 |
| ø50 | -1 | 0 | 8 | 0 |
| ø63 | -2 | 0 | 16 | 0 |
| ø80 | -3 | 1 | 27 | -1 |
| ø100 | -5 | 1 | 53 | -1 |
| ø125 | -8 | 3 | 84 | 0 |

Weight (NBR)

| Model | Weight (g) | Model | Weight (g) |
|--------------------|------------|----------------------|------------|
| ZPX40HNJ25-B01-A18 | 266 | ZPX80HNJ50-B01-A18 | 401 |
| ZPX40HNJ50-B01-A18 | 287 | ZPX80HNJ75-B01-A18 | 424 |
| ZPX40HNJ75-B01-A18 | 310 | ZPX100HNJ25-B01-A22 | 638 |
| ZPX50HNJ25-B01-A18 | 278 | ZPX100HNJ50-B01-A22 | 677 |
| ZPX50HNJ50-B01-A18 | 299 | ZPX100HNJ75-B01-A22 | 721 |
| ZPX50HNJ75-B01-A18 | 322 | ZPX100HNJ100-B01-A22 | 760 |
| ZPX63HNJ25-B01-A18 | 351 | ZPX125HNJ25-B01-A22 | 702 |
| ZPX63HNJ50-B01-A18 | 372 | ZPX125HNJ50-B01-A22 | 741 |
| ZPX63HNJ75-B01-A18 | 395 | ZPX125HNJ75-B01-A22 | 785 |
| ZPX80HNJ25-B01-A18 | 380 | ZPX125HNJ100-B01-A22 | 824 |

Add or deduct the weight shown in the table on the left for other materials.

How to Order

ZPX 40 H N J 25 — B01 — A18

Pad diameter (mm)

| | |
|-----|------|
| 40 | ø40 |
| 50 | ø50 |
| 63 | ø63 |
| 80 | ø80 |
| 100 | ø100 |
| 125 | ø125 |

Pad type

| | |
|---|------------|
| H | Heavy duty |
|---|------------|

Material

| | |
|---|-----------------|
| N | NBR |
| S | Silicon rubber |
| U | Urethane rubber |
| F | Fluoro rubber |
| E | EPR |

Mounting thread

| | |
|-----|------------------------|
| A18 | M18 x 1.5 (ø40 to ø80) |
| A22 | M22 x 1.5 (ø100, ø125) |

Vacuum entry

| | |
|-----|--------|
| B01 | Rc 1/8 |
|-----|--------|

Buffer stroke (Rotating)

| Stroke | ø40 | ø50 | ø63 | ø80 | ø100 | ø125 |
|--------|-----|-----|-----|-----|------|------|
| 25 | ● | ● | ● | ● | ● | ● |
| 50 | ● | ● | ● | ● | ● | ● |
| 75 | ● | ● | ● | ● | ● | ● |
| 100 | — | — | — | — | ● | ● |

Spring Force

| Pad diameter | ø40 to ø80 | ø100, ø125 |
|----------------------|------------|------------|
| First mounting load | 6.9 N | 10 N |
| Second mounting load | 11.8 N | 15 N |

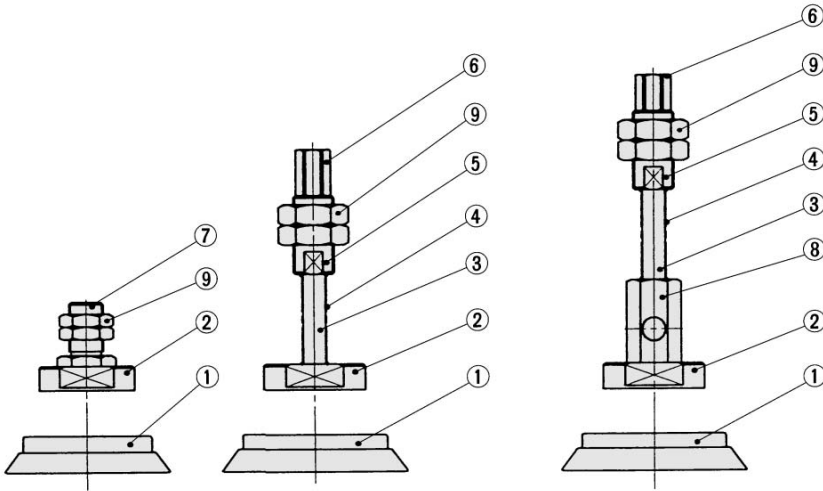
ZX
ZR
ZM
ZH
ZU
ZL
ZY
ZQ
ZF
ZP
ZCU
AMJ
Misc.

Vacuum Pads for Heavy Duty Material Handling **Series ZPT/ZPX**

Construction

Series ZPT

Series ZPX



Component Parts

| No. | Description | Material | Surface treatment |
|-----|----------------|-----------------------------------------------------------|---------------------------|
| ① | Pad | NBR, Silicone rubber, Urethane rubber, Fluoro rubber, EPR | — |
| ② | Adapter plate | Aluminum | — |
| ③ | Piston rod | Carbon steel | Hard chrome plated |
| ④ | Spring | Stainless steel | — |
| ⑤ | Buffer body | Aluminum | — |
| ⑥ | Buffer adaptor | Brass | Electroless nickel plated |
| ⑦ | Adaptor A | Brass | Electroless nickel plated |
| ⑧ | X type adaptor | Brass | Electroless nickel plated |
| ⑨ | Mounting nut | Rolled steel | Black zinc chromated |

Replacement Parts/Pad Unit

How to Order Pad Unit

ZP 40 H N

Pad dia. (mm) | Material

| Pad dia. (mm) | Material |
|---------------|-----------------|
| 40 | NBR |
| 50 | Silicon rubber |
| 63 | Urethane rubber |
| 80 | Fluoro rubber |
| 100 | EPR |
| 125 | |

Pad type: **H** Heavy duty

Pad Unit Weight

(NBR)

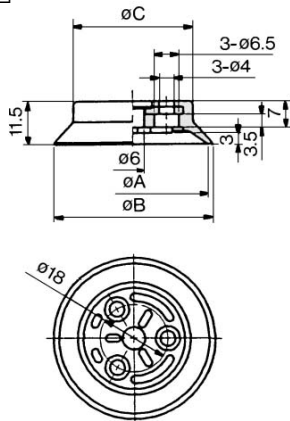
| Model | Weight (g) |
|---------|------------|
| ZP40HN | 15 |
| ZP50HN | 27 |
| ZP63HN | 57 |
| ZP80HN | 86 |
| ZP100HN | 160 |
| ZP125HN | 224 |

Add NBR weight to the table on the right for other materials.

| Pad dia. | Silicon rubber | Urethane rubber | Fluoro rubber | EPR |
|----------|----------------|-----------------|---------------|-----|
| ø40 | -1 | 0 | 5 | -1 |
| ø50 | -1 | 0 | 8 | 0 |
| ø63 | -2 | 0 | 16 | 0 |
| ø80 | -3 | 1 | 27 | -1 |
| ø100 | -5 | 1 | 53 | -1 |
| ø125 | -8 | 3 | 84 | 0 |

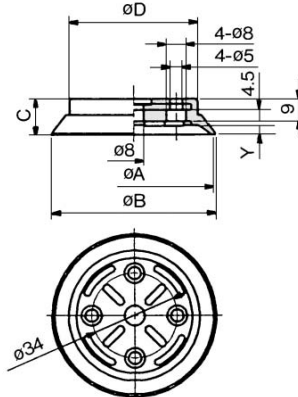
Dimensions

ZP₅₀⁴⁰H□



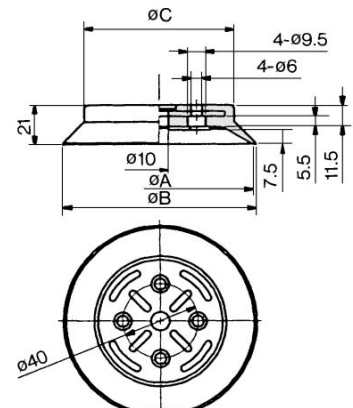
| Model | øA | øB | øC |
|--------|----|----|----|
| ZP40H□ | 40 | 42 | 32 |
| ZP50H□ | 50 | 52 | 42 |

ZP₈₀⁶³H□



| Model | øA | øB | C | D | Y |
|--------|----|----|------|----|-----|
| ZP63H□ | 63 | 65 | 14.5 | 50 | 3.5 |
| ZP80H□ | 80 | 82 | 16.5 | 61 | 4.5 |

ZP₁₂₅¹⁰⁰H□



| Model | øA | øB | øC |
|---------|-----|-----|-----|
| ZP100H□ | 100 | 103 | 80 |
| ZP125H□ | 125 | 128 | 104 |

ZX

ZR

ZM

ZH

ZU

ZL

ZY

ZQ

ZF

ZP

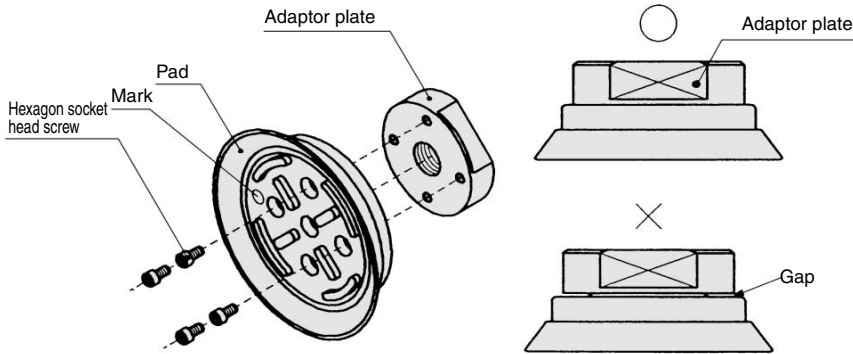
ZCU

AMJ

Misc.

Series ZPT/ZPX

How to Assemble/Disassemble



Remove bolts with a hex. key wrench from the pad underside. Tighten new pad with the bolts ensuring there is no gap between the adaptor plate and the pad.

How to Distinguish Different Pad Materials

Checking the mark on the pad's interior surface as shown in the figure on the left.

| Material | Color | Mark |
|-----------------|-------|------|
| NBR | Black | — |
| Silicon rubber | White | — |
| Urethane rubber | Brown | — |
| Fluoro rubber | Black | ⓕ |
| EPR | Black | ⓔ |

Replacement Parts/Mounting Nut

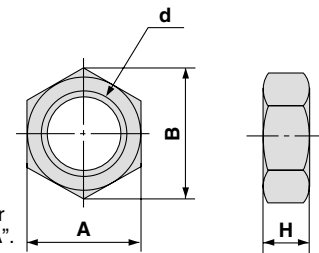
How to Order

ZPNA—M16

Mounting thread

| | |
|------------|-----------|
| M16 | M16 x 1.5 |
| M18 | M18 x 1.5 |
| M22 | M22 x 1.5 |

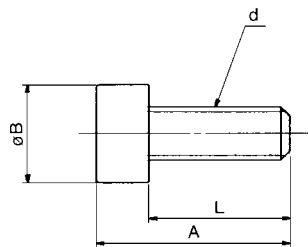
Mounting nut part number for "M14 x 1" is "SN-015A".



| Model | A | B | d | H |
|----------|----|------|-----------|---|
| SN-015A | 19 | 21.9 | M14 x 1 | 5 |
| ZPNA-M16 | 22 | 25.4 | M16 x 1.5 | 6 |
| ZPNA-M18 | 27 | 31.2 | M18 x 1.5 | 9 |
| ZPNA-M22 | 30 | 34.6 | M22 x 1.5 | 8 |

Bolts

Dimensions



| A | øB | d | L |
|----|-----|----------|----|
| 11 | 5.5 | M3 x 0.5 | 8 |
| 12 | 7 | M4 x 0.7 | 8 |
| 15 | 8.5 | M5 x 0.8 | 10 |