
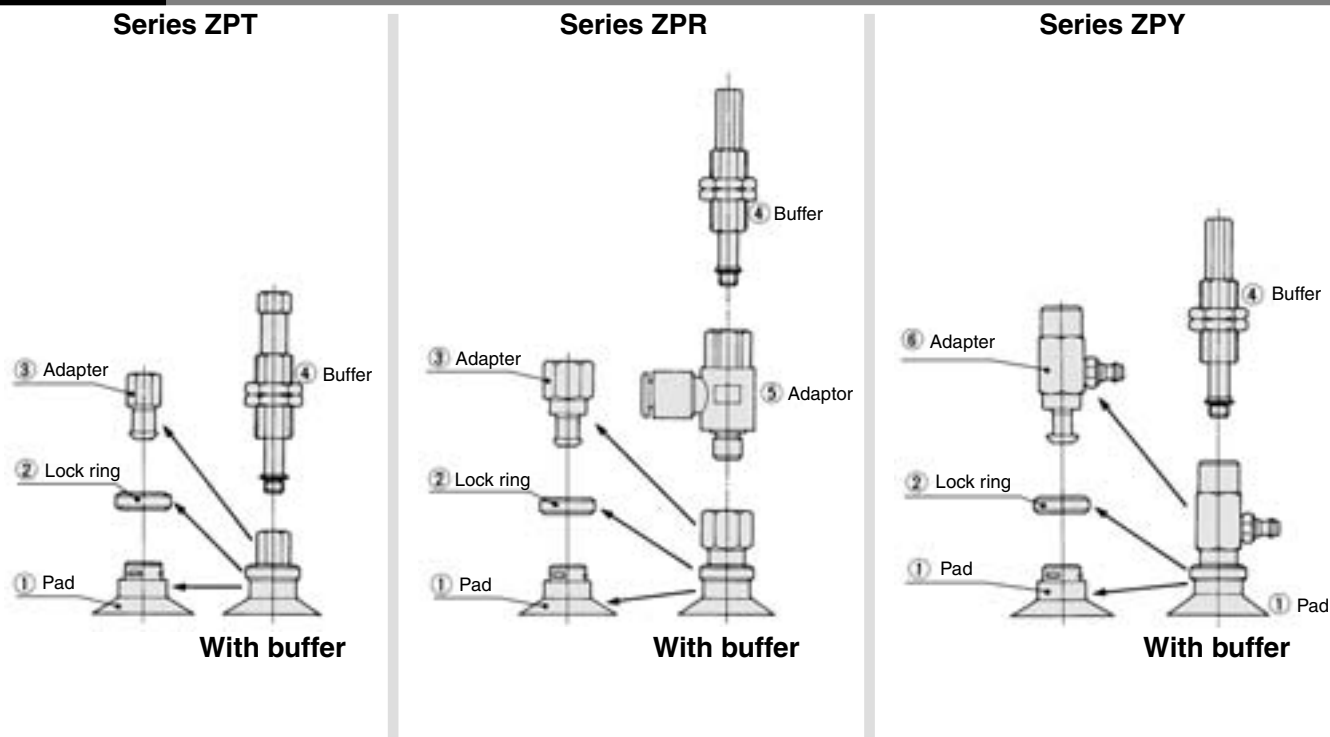


## Vacuum Pad/Components

 Refer to pages 1182 to 1187 for part numbers of ③ to ⑥.

### Construction

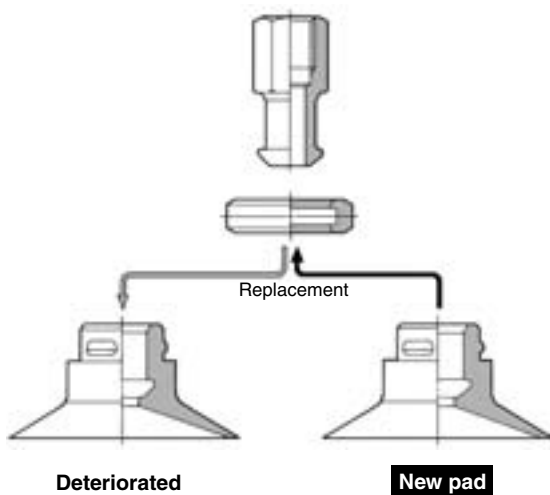


### Component Parts

No.	Description	Material	Note
1	Pad	Conductive NBR, Conductive silicon rubber, NBR, Silicon rubber, Urethane rubber, Fluoro rubber	
2	Lock ring	Brass	Electroless nickel plated
3	Adapter	Brass	Electroless nickel plated
4	Buffer	Brass	Electroless nickel plated
5	Adapter (with one-touch fitting)	Brass, PBT	Electroless nickel plated
6	Adapter (with barb fitting)	Brass	Electroless nickel plated

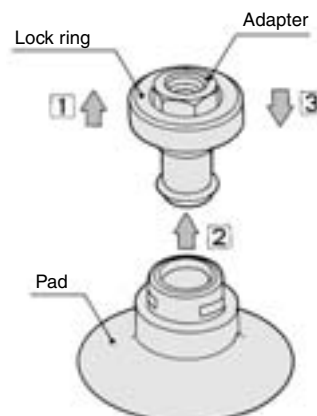
### Maintenance of Pad

Since pads are essentially rubber, deterioration is unavoidable. The rate of deterioration depends upon factors such as conditions of use, environment and temperature. Regular maintenance should be performed. If any damage, splitting, cracking or abrasion has occurred in a pad which appears to be harmful, replace it immediately. Also, take care not to damage the outside surface of the pad.



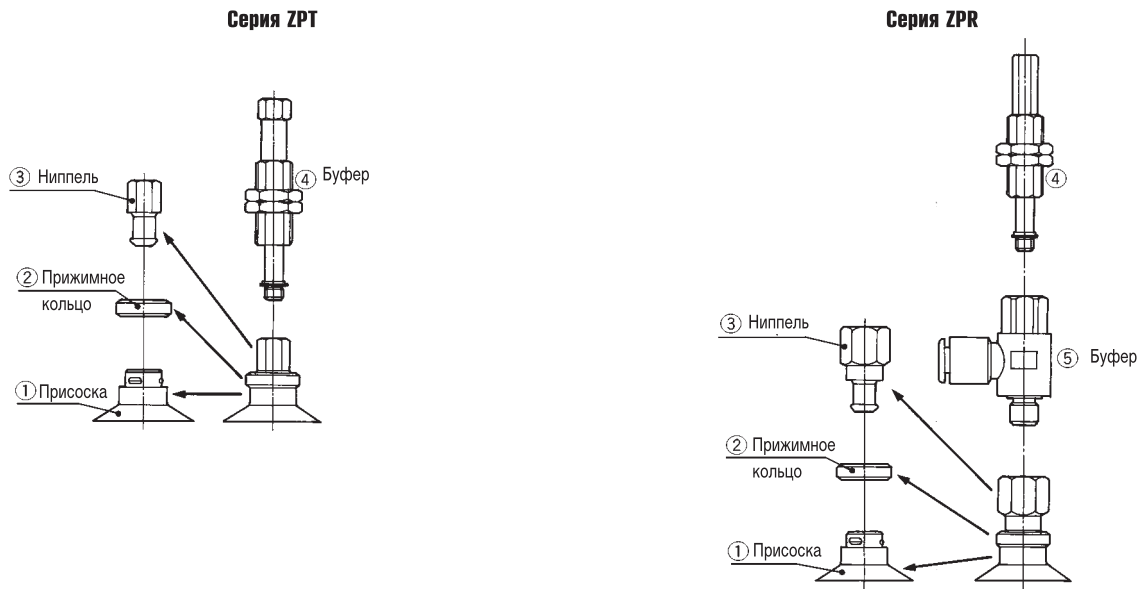
### How to Replace

1. Pull the lock ring upward, and after lifting it to the adapter, remove the old pad by pulling it downward.
2. While holding the lock ring in the raised position, place a new pad onto the adapter.
3. Confirm that the pad is securely in place, and then return the lock ring to its original position.



# Вакуумные присоски ZPT/ZPR

## Конструкция

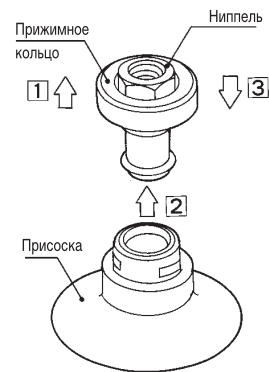
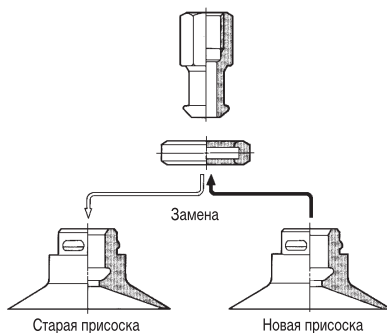


## Замена присосок

В зависимости от условий эксплуатации, в той или иной степени происходит износ присоски. В связи с этим необходимо регулярно производить замену присоски.

### Инструкция по замене присосок

1. Потянуть прижимное кольцо вверх, затем снять старую присоску
2. Удерживая старое кольцо в верхнем положении, установить новую присоску.
3. Удерживая присоску, опустить прижимное кольцо в исходное положение.



## Принадлежности

### Номер для заказа запасной присоски

ZP 10 U N - X19

Диаметр (мм)	
02	ø2
04	ø4
06	ø6
08	ø8
10	ø10
13	ø13
16	ø16
20	ø20
25	ø25
32	ø32
40	ø40
50	ø50

Тип	
U	Плоская
C	Плоская с ребрами
D	Глубокий тип
B	Сильфонный тип

Прижимное кольцо	
-	С прижимным кольцом
-X19	Без приж. кольца (10 и более)

Материал	
N	NBR
S	Силикон

\*Другие материалы - по запросу

### Номер для заказа прижимного кольца

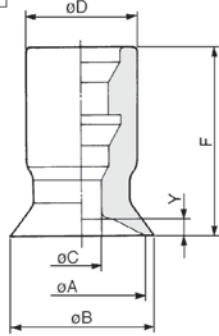
ZPL 1

Диаметр присоски (мм)		
1	ø10	ø16
2	ø20	ø32
3	ø40,	ø50

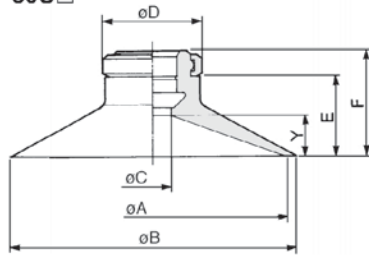
## Размеры

### Плоская (U) / с прижимным кольцом

ZP02U□ - 08U□



ZP10U□ - 50U□

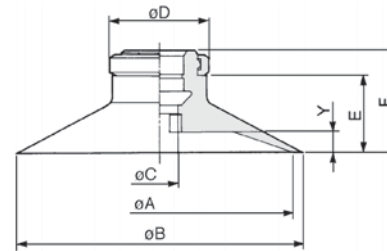


Тип	Размер	øA	øB	øC	øD	E	F	Y
ZP02U□	U02	2	2.6	1.2	7	—	12	0.8
ZP04U□	U04	4	4.8	1.6	7	—	12	0.8
ZP06U□	U06	6	7	2.5	7	—	12	0.8
ZP08U□	U08	8	9	2.5	7	—	12	1
ZP10U□	U10	10	12	4	13	7.7	12	3
ZP13U□	U13	13	15	4	13	7.7	12	3
ZP16U□	U16	16	18	4	13	8.2	12.5	3.5
ZP20U□	U20	20	23	4	15	9.5	14	4
ZP25U□	U25	25	28	4	15	9.5	14	4
ZP32U□	U32	32	35	4	15	10	14.5	4.5
ZP40U□	U40	40	43	7	18	13.7	18.5	6.5
ZP50U□	U50	50	53	7	18	14.7	19.5	7.5

\*□ Материал: N - NBR; S - силикон.

### Плоская с ребрами (C)

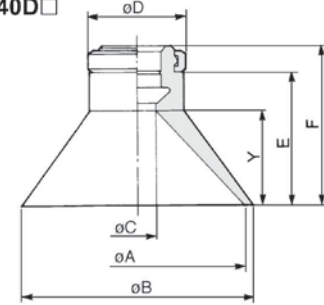
ZP10C□ - 50C□



Тип	Размер	øA	øB	øC	øD	E	F	Y
ZP10C□	C10	10	12	4	13	7.7	12	1.7
ZP13C□	C13	13	15	4	13	7.7	12	1.8
ZP16C□	C16	16	18	4	13	8.2	12.5	1.2
ZP20C□	C20	20	23	4	15	9.5	14	1.7
ZP25C□	C25	25	28	4	15	9.5	14	1.8
ZP32C□	C32	32	35	4	15	10	14.5	2.3
ZP40C□	C40	40	43	7	18	13.7	18.5	3.3
ZP50C□	C50	50	53	7	18	14.7	19.5	3.8

### Глубокий тип (D)

ZP10D□ - 40D□



Тип	Размер	øA	øB	øC	øD	E	F	Y
ZP10D□	D10	10	12	4	13	10.7	15	6
ZP16D□	D16	16	18	4	13	11.7	16	7
ZP25D□	D25	25	28	4	15	15.5	20	10
ZP40D□	D40	40	43	7	18	24.2	29	17

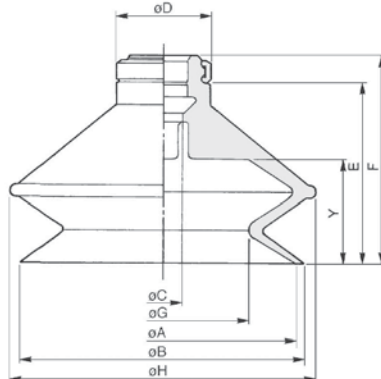
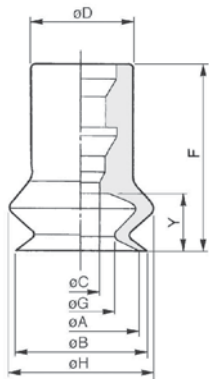
### Сильфонный тип (B) / с прижимным кольцом

Диаметр: 6 - 8

Диаметр: 10 - 50

ZP06B□ - 08B□

ZP10B□ - 50B□



Тип	Размер	øA	øB	øC	øD	E	F	øG	øH	Y
ZP06B□	B06	6	7	2.5	7	—	13	3.3	9.1	4
ZP08B□	B08	8	9	2.5	7	—	13	4.7	10.1	4
ZP10B□	B10	10	12	4	13	11.7	16	5.5	13.8	5.5
ZP13B□	B13	13	15	4	13	14.2	18.5	8.7	19	7.5
ZP16B□	B16	16	18	4	13	15.7	20	9.9	21	8.5
ZP20B□	B20	20	22	4	15	19	23.5	12.4	25	10.5
ZP25B□	B25	25	27	4	15	19.5	24	15.6	28	10.5
ZP32B□	B32	32	34	4	15	24.5	29	18.9	37	14
ZP40B□	B40	40	43	7	18	29.2	34	24.4	48	16
ZP50B□	B50	50	53	7	18	33.2	38	32.4	57	19

\*□ Материал: N - NBR; S - силикон.

**Replacement Parts: Pad Unit (With lock ring/Without lock ring)**

**How to Order/Pad Unit**

Thin flat (UT), Thin flat with ribs (CT)

**ZP 10 UT N**

Pad diameter

10	10
13	13
16	16

Pad type

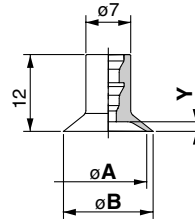
UT	Thin flat
CT	Thin flat with ribs

Material

N	NBR
S	Silicon rubber
U	Urethane rubber
F	Fluororubber
GN	Conductive NBR
GS	Conductive silicon rubber

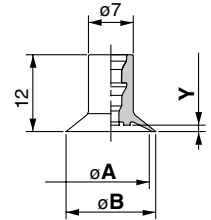
**Dimensions**

Thin flat



ZP□□UT□□

Thin flat with ribs



ZP□□CT□□

Dimensions (mm)

Model	A	B	Y
ZP10UT□□	10	11	1
ZP13UT□□	13	14	1.5
ZP16UT□□	16	17	

Dimensions (mm)

Model	A	B	Y
ZP10CT□□	10	11	0.8
ZP13CT□□	13	14	1
ZP16CT□□	16	17	

Elliptic

**ZP 2004 U N**

Pad diameter (Breadth x Length)

2004	2 x 4
3507	3.5 x 7
4010	4 x 10

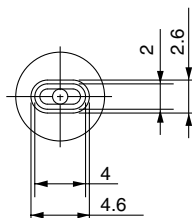
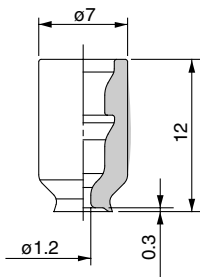
Pad type

U	Flat
---	------

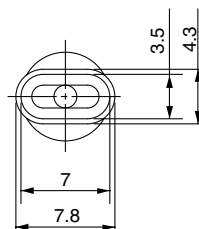
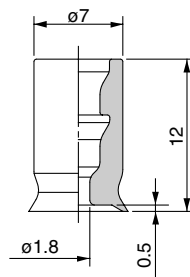
Material

N	NBR
S	Silicon rubber
U	Urethane rubber
F	Fluororubber
GN	Conductive NBR
GS	Conductive silicon rubber

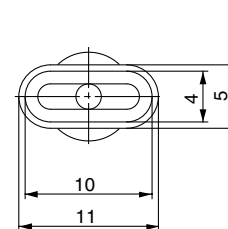
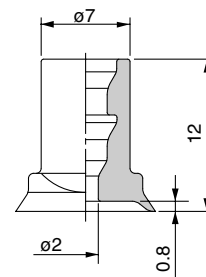
**Dimensions**



ZP2004U□□



ZP3507U□□



ZP4010U□□

- ZA
- ZX
- ZR
- ZM
- ZMA
- ZQ
- ZH
- ZU
- ZL
- ZY□
- ZF□
- ZP□
- SP
- ZCUK
- AMJ
- AMV
- AEP
- HEP

Related Equipment

# Series ZP

## Replacement Parts: Adapter/Buffer (Series ZPT)

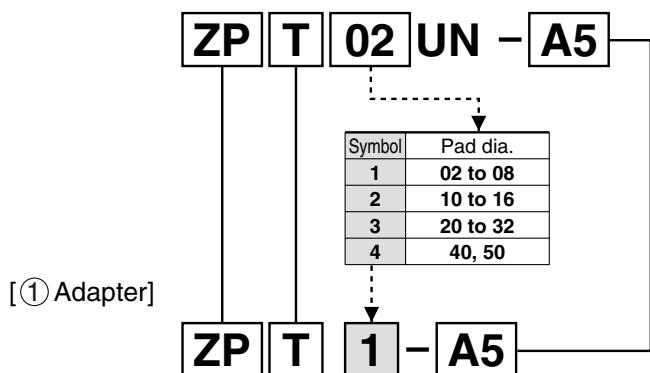
Appropriate adaptor or buffer can be selected for the currently used pad model.

● Without buffer

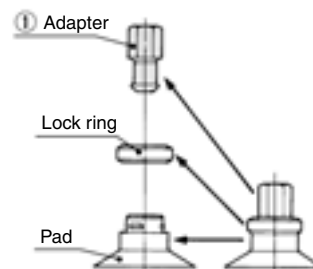
— The same symbol

←···· Replacement of the symbol

[Pad model no.]



## Construction



Applicable pad diameter:  $\phi 2$  to  $\phi 8$

2 x 4, 3.5 x 7, 4 x 10

$\phi 10$  to  $\phi 16$  (Thin section series)

Model	① Adapter
ZPT□□□□-A5	ZPT1-A5
ZPT□□□□-A6	ZPT1-A6
ZPT□□□□-B4	ZPT1-B4
ZPT□□□□-B5	ZPT1-B5

Applicable pad diameter:  $\phi 10$  to  $\phi 16$

Model	① Adapter
ZPT□□□□-A5	ZPT2-A5
ZPT□□□□-A6	ZPT2-A6
ZPT□□□□-B5	ZPT2-B5
ZPT□□□□-B6	ZPT2-B6
ZPT□□□□-B01	ZPT2-B01
ZPT□□□□-N01	ZPT2-N01
ZPT□□□□-T01	ZPT2-T01

Applicable pad diameter:  $\phi 20$  to  $\phi 32$

Model	① Adapter
ZPT□□□□-A6	ZPT3-A6
ZPT□□□□-A8	ZPT3-A8
ZPT□□□□-B5	ZPT3-B5
ZPT□□□□-B6	ZPT3-B6
ZPT□□□□-B8	ZPT3-B8
ZPT□□□□-B01	ZPT3-B01
ZPT□□□□-N01	ZPT3-N01
ZPT□□□□-T01	ZPT3-T01

Applicable pad diameter:  $\phi 40$ ,  $\phi 50$

Model	① Adapter
ZPT□□□□-A6	ZPT4-A6
ZPT□□□□-A8	ZPT4-A8
ZPT□□□□-B6	ZPT4-B6
ZPT□□□□-B8	ZPT4-B8
ZPT□□□□-B01	ZPT4-B01
ZPT□□□□-N01	ZPT4-N01
ZPT□□□□-T01	ZPT4-T01

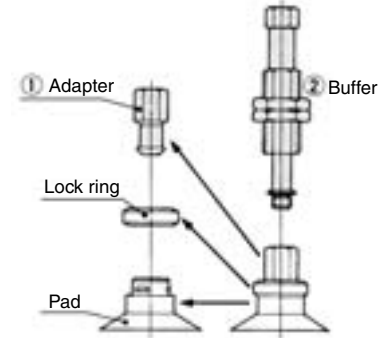
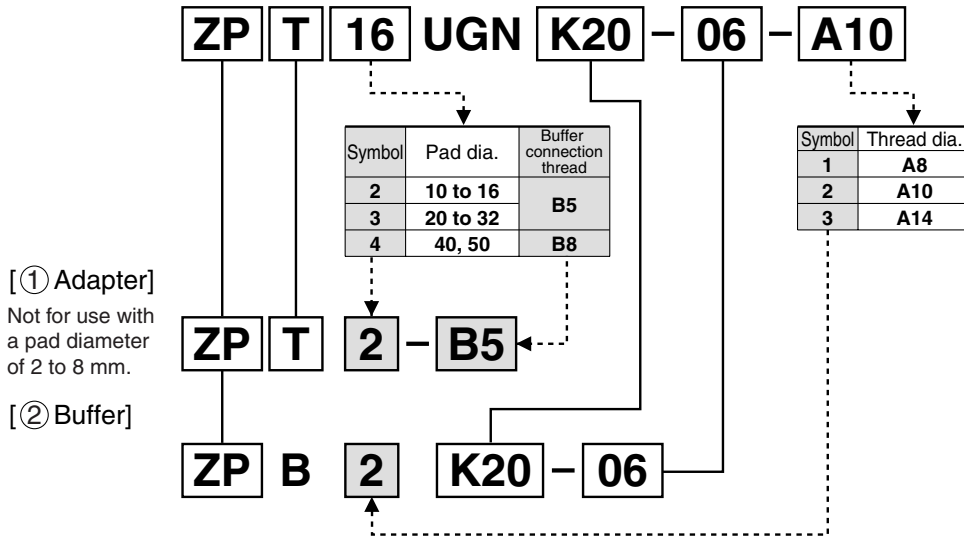
**Replacement Parts: Adapter/Buffer (Series ZPT)**

● With buffer

— The same symbol  
 ←····· Replacement of the symbol

**Construction**

[Pad model no.]



[① Adapter]  
 Not for use with a pad diameter of 2 to 8 mm.

[② Buffer]

\* Refer to ø2 to ø8 for Thin flat, Thin flat with ribs, and Elliptic.

**Applicable pad diameter: ø2 to ø8**  
 2 x 4, 3.5 x 7, 4 x 10  
 ø10 to ø16 (Thin section series)

Model	② Buffer only
ZPT□□□□(J-K)★★-B3-A8	ZPB1(J-K)★★-B3
ZPT□□□□(J-K)★★-B5-A8	ZPB1(J-K)★★-B5
ZPT□□□□(J-K)★★-N4-A8	ZPB1(J-K)★★-N4
ZPT□□□□(J-K)★★-U4-A8	ZPB1(J-K)★★-U4
ZPT□□□□(J-K)★★-04-A8	ZPB1(J-K)★★-04
ZPT□□□□(J-K)★★-06-A8	ZPB1(J-K)★★-06

Note) Applicable buffer stroke (★★): 6, 10, 15, 25 mm

**Applicable pad diameter: ø10 to ø16**

Model	① Adapter	② Buffer
ZPT□□□□(J-K)★★-B5-A10	ZPT2-B5	ZPB2(J-K)★★-B5
ZPT□□□□(J-K)★★-N6-A10	ZPT2-B5	ZPB2(J-K)★★-N6
ZPT□□□□(J-K)★★-U6-A10	ZPT2-B5	ZPB2(J-K)★★-U6
ZPT□□□□(J-K)★★-04-A10	ZPT2-B5	ZPB2(J-K)★★-04
ZPT□□□□(J-K)★★-06-A10	ZPT2-B5	ZPB2(J-K)★★-06

Note) Applicable buffer stroke (★★): 10, 20, 30, 40, 50 mm

**Applicable pad diameter: ø20 to ø32**

Model	① Adapter	② Buffer
ZPT□□□□(J-K)★★-B5-A10	ZPT3-B5	ZPB2(J-K)★★-B5
ZPT□□□□(J-K)★★-N6-A10	ZPT3-B5	ZPB2(J-K)★★-N6
ZPT□□□□(J-K)★★-U6-A10	ZPT3-B5	ZPB2(J-K)★★-U6
ZPT□□□□(J-K)★★-04-A10	ZPT3-B5	ZPB2(J-K)★★-04
ZPT□□□□(J-K)★★-06-A10	ZPT3-B5	ZPB2(J-K)★★-06

Note) Applicable buffer stroke (★★): 10, 20, 30, 40, 50 mm

**Applicable pad diameter: ø40, ø50**

Model	① Adapter	② Buffer
ZPT□□□□(J-K)★★-B5-A14	ZPT4-B8	ZPB3(J-K)★★-B5
ZPT□□□□(J-K)★★-□01-A14	ZPT4-B8	ZPB3(J-K)★★-□01
ZPT□□□□(J-K)★★-N6-A14	ZPT4-B8	ZPB3(J-K)★★-N6
ZPT□□□□(J-K)★★-U6-A14	ZPT4-B8	ZPB3(J-K)★★-U6
ZPT□□□□(J-K)★★-06-A14	ZPT4-B8	ZPB3(J-K)★★-06
ZPT□□□□(J-K)★★-08-A14	ZPT4-B8	ZPB3(J-K)★★-08

Note) Applicable buffer stroke (★★): 10, 20, 30, 50 mm

- ZA
- ZX
- ZR
- ZM
- ZMA
- ZQ
- ZH
- ZU
- ZL
- ZY□
- ZF□
- ZP□
- SP
- ZCUK
- AMJ
- AMV
- AEP
- HEP

Related Equipment

# Series ZP

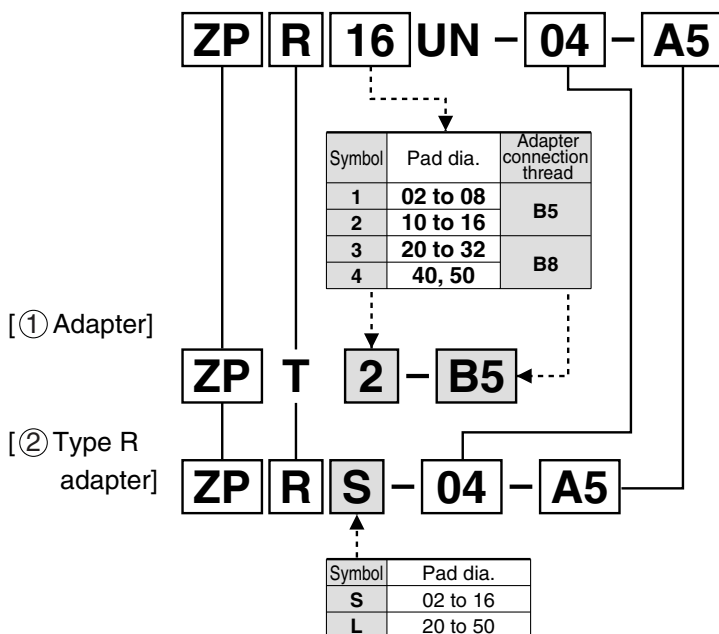
## Replacement Parts: Adapter/Buffer (Series ZPR)

● Without buffer

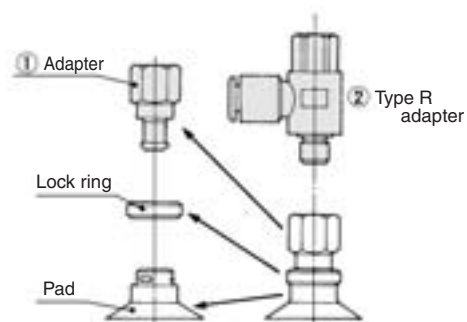
— The same symbol

← Replacement of the symbol

[Pad model no.]



## Construction



Applicable pad diameter:  $\varnothing 2$  to  $\varnothing 8$

2 x 4, 3.5 x 7, 4 x 10

$\varnothing 10$  to  $\varnothing 16$  (Thin section series)

Model	① Type T adapter	② Type R adapter
ZPR□□□□-☆☆-A5	ZPT1-B5	ZPRS-☆☆-A5
ZPR□□□□-☆☆-A6	ZPT1-B5	ZPRS-☆☆-A6
ZPR□□□□-☆☆-B4	ZPT1-B5	ZPRS-☆☆-B4
ZPR□□□□-☆☆-B5	ZPT1-B5	ZPRS-☆☆-B5

Note) Vacuum entry (☆☆): 04, 06

Applicable pad diameter:  $\varnothing 10$  to  $\varnothing 16$

Model	① Type T adapter	② Type R adapter
ZPR□□□□-☆☆-A5	ZPT2-B5	ZPRS-☆☆-A5
ZPR□□□□-☆☆-A6	ZPT2-B5	ZPRS-☆☆-A6
ZPR□□□□-☆☆-B5	ZPT2-B5	ZPRS-☆☆-B5
ZPR□□□□-☆☆-B6	ZPT2-B5	ZPRS-☆☆-B6

Note) Vacuum entry (☆☆): 04, 06

Applicable pad diameter:  $\varnothing 20$  to  $\varnothing 32$

Model	① Type T adapter	② Type R adapter
ZPR□□□□-☆☆-A6	ZPT3-B8	ZPRL-☆☆-A6
ZPR□□□□-☆☆-A8	ZPT3-B8	ZPRL-☆☆-A8
ZPR□□□□-☆☆-B5	ZPT3-B8	ZPRL-☆☆-B5
ZPR□□□□-☆☆-B6	ZPT3-B8	ZPRL-☆☆-B6
ZPR□□□□-☆☆-B8	ZPT3-B8	ZPRL-☆☆-B8

Note) Vacuum entry (☆☆): 04, 06, 08

Applicable pad diameter:  $\varnothing 40$ ,  $\varnothing 50$

Model	① Type T adapter	② Type R adapter
ZPR□□□□-☆☆-A6	ZPT4-B8	ZPRL-☆☆-A6
ZPR□□□□-☆☆-A8	ZPT4-B8	ZPRL-☆☆-A8
ZPR□□□□-☆☆-B6	ZPT4-B8	ZPRL-☆☆-B6
ZPR□□□□-☆☆-B8	ZPT4-B8	ZPRL-☆☆-B8

Note) Vacuum entry (☆☆): 06, 08

## Replacement Parts: Adapter/Buffer (Series ZPR)

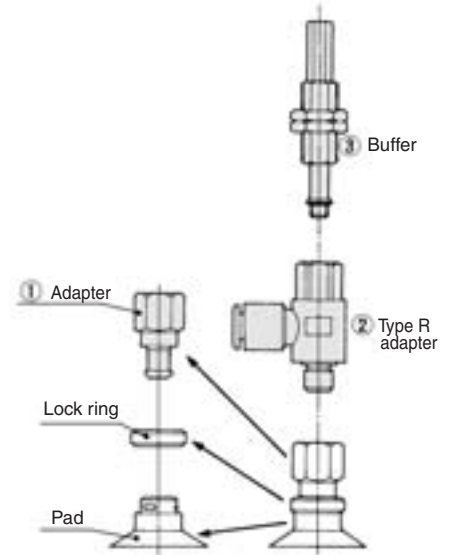
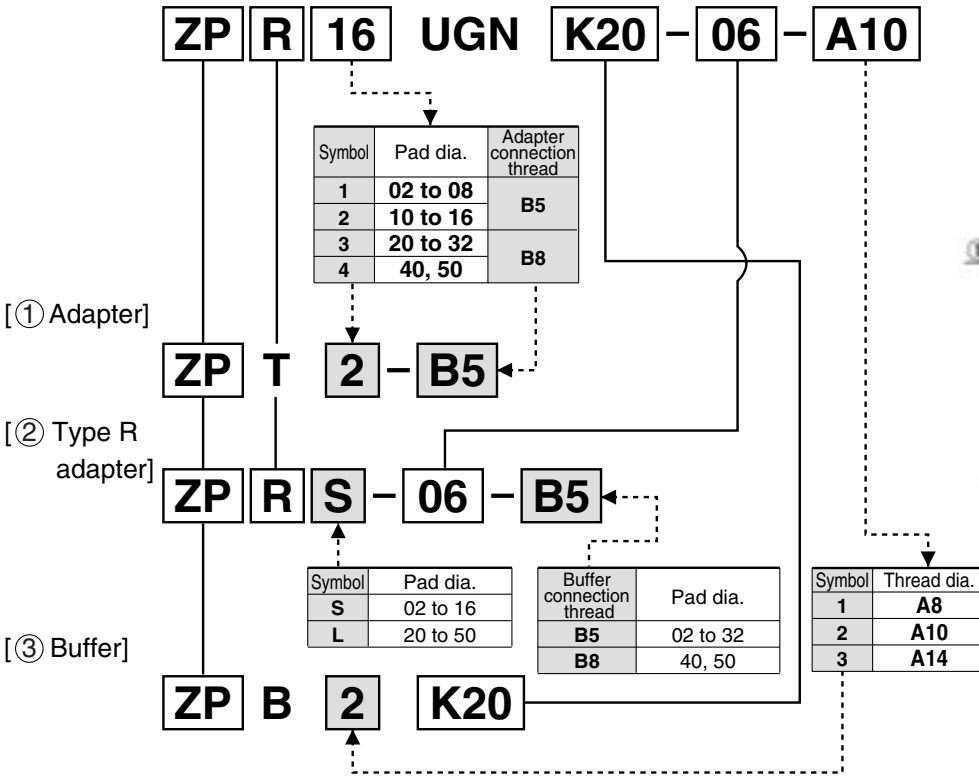
● With buffer

— The same symbol

←···· Replacement of the symbol

### Construction

[Pad model no.]



\* Refer to ø2 to ø8 for Thin flat, Thin flat with ribs, and Elliptic.

**Applicable pad diameter: ø2 to ø8**  
 2 x 4, 3.5 x 7, 4 x 10  
 ø10 to ø16 (Thin section series)

Model	① Type T adapter	② Type R adapter	③ Buffer
ZPR□□□□(J-K)★★-☆☆-A8	ZPT1-B5	ZPRS-☆☆-B5	ZPB1(J-K)★★

Note 1) Applicable buffer stroke (★★): 6, 10, 15, 25 mm  
 Note 2) Vacuum entry (☆☆): 04, 06

**Applicable pad diameter: ø10 to ø16**

Model	① Type T adapter	② Type R adapter	③ Buffer
ZPR□□□□(J-K)★★-☆☆-A10	ZPT2-B5	ZPRS-☆☆-B5	ZPB2(J-K)★★

Note 1) Applicable buffer stroke (★★): 10, 20, 30, 40, 50 mm  
 Note 2) Vacuum entry (☆☆): 04, 06

**Applicable pad diameter: ø20 to ø32**

Model	① Type T adapter	② Type R adapter	③ Buffer
ZPR□□□□(J-K)★★-☆☆-A10	ZPT3-B8	ZPRL-☆☆-B5	ZPB2(J-K)★★

Note 1) Applicable buffer stroke (★★): 10, 20, 30, 40, 50 mm  
 Note 2) Vacuum entry (☆☆): 04, 06, 08

**Applicable pad diameter: ø40, ø50**

Model	① Type T adapter	② Type R adapter	③ Buffer
ZPR□□□□(J-K)★★-☆☆-A14	ZPT4-B8	ZPRL-☆☆-B8	ZPB3(J-K)★★

Note 1) Applicable buffer stroke (★★): 10, 20, 30, 50 mm  
 Note 2) Vacuum entry (☆☆): 06, 08

- ZA
- ZX
- ZR
- ZM
- ZMA
- ZQ
- ZH
- ZU
- ZL
- ZY□
- ZF□
- ZP□
- SP
- ZCUK
- AMJ
- AMV
- AEP
- HEP
- Related Equipment



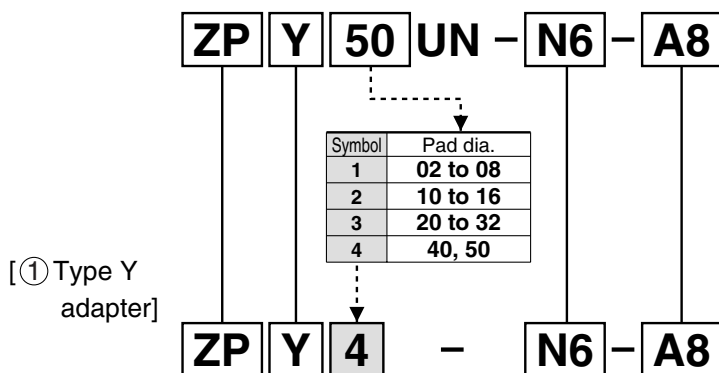
# Series ZP

## Replacement Parts: Adapter/Buffer (Series ZPY)

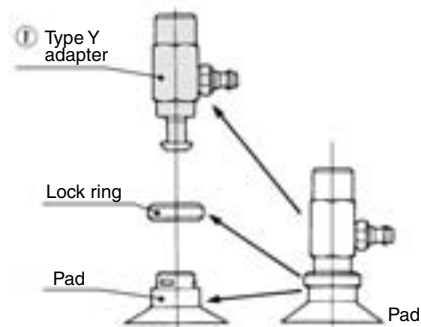
● Without buffer

— The same symbol  
 ◀ Replacement of the symbol

[Pad model no.]



## Construction



Applicable pad diameter:  $\varnothing 2$  to  $\varnothing 8$   
 2 x 4, 3.5 x 7, 4 x 10  
 $\varnothing 10$  to  $\varnothing 16$  (Thin section series)

Model	① Adapter
ZPY□□□□-◆◆-A5	ZPY1-◆◆-A5
ZPY□□□□-◆◆-A6	ZPY1-◆◆-A6
ZPY□□□□-◆◆-B4	ZPY1-◆◆-B4
ZPY□□□□-◆◆-B5	ZPY1-◆◆-B5

Note) Vacuum entry (◆◆): N4, N6, U4, U6

Applicable pad diameter:  $\varnothing 10$  to  $\varnothing 16$

Model	① Adapter
ZPY□□□□-◆◆-A5	ZPY2-◆◆-A5
ZPY□□□□-◆◆-A6	ZPY2-◆◆-A6
ZPY□□□□-◆◆-B5	ZPY2-◆◆-B5
ZPY□□□□-◆◆-B6	ZPY2-◆◆-B6

Note) Vacuum entry (◆◆): N4, N6, U4, U6

Applicable pad diameter:  $\varnothing 20$  to  $\varnothing 32$

Model	① Adapter
ZPY□□□□-◆◆-A6	ZPY3-◆◆-A6
ZPY□□□□-◆◆-A8	ZPY3-◆◆-A8
ZPY□□□□-◆◆-B5	ZPY3-◆◆-B5
ZPY□□□□-◆◆-B6	ZPY3-◆◆-B6
ZPY□□□□-◆◆-B8	ZPY3-◆◆-B8

Note) Vacuum entry (◆◆): N4, N6, U4, U6

Applicable pad diameter:  $\varnothing 40$ ,  $\varnothing 50$

Model	① Adapter
ZPY□□□□-◆◆-A6	ZPY4-◆◆-A6
ZPY□□□□-◆◆-A8	ZPY4-◆◆-A8
ZPY□□□□-◆◆-B6	ZPY4-◆◆-B6
ZPY□□□□-◆◆-B8	ZPY4-◆◆-B8

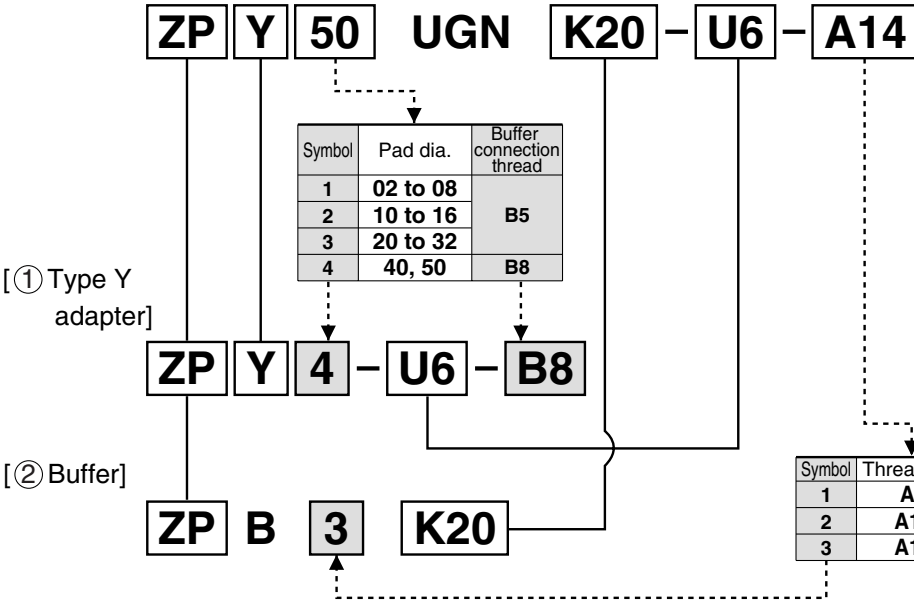
Note) Vacuum entry (◆◆): N6, U6

**Replacement Parts: Adapter/Buffer (Series ZPY)**

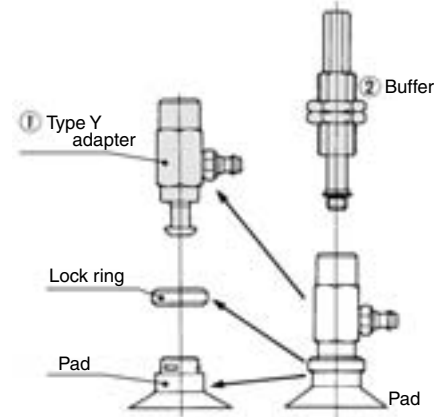
● With buffer

— The same symbol  
 ← Replacement of the symbol

[Pad model no.]



**Construction**



\* Refer to ø2 to ø8 for Thin flat, Thin flat with ribs, and Elliptic.

**Applicable pad diameter: ø2 to ø8**  
 2 x 4, 3.5 x 7, 4 x 10  
 ø10 to ø16 (Thin section series)

Model	① Adapter	② Buffer
ZPY□□□□(J-K)★★-◆◆-A8	ZPY1-◆◆-B5	ZPB1(J-K)★★

Note 1) Applicable buffer stroke (★★): 6, 10, 15, 25 mm  
 Note 2) Vacuum entry (◆◆): N4, N6, U4, U6

**Applicable pad diameter: ø10 to ø16**

Model	① Adapter	② Buffer
ZPY□□□□(J-K)★★-◆◆-A10	ZPY2-◆◆-B5	ZPB2(J-K)★★

Note 1) Applicable buffer stroke (★★): 10, 20, 30, 40, 50 mm  
 Note 2) Vacuum entry (◆◆): N4, N6, U4, U6

**Applicable pad diameter: ø20 to ø32**

Model	① Adapter	② Buffer
ZPY□□□□(J-K)★★-◆◆-A10	ZPY3-◆◆-B5	ZPB2(J-K)★★

Note 1) Applicable buffer stroke (★★): 10, 20, 30, 40, 50 mm  
 Note 2) Vacuum entry (◆◆): N4, N6, U4, U6

**Applicable pad diameter: ø40, ø50**

Model	① Adapter	② Buffer
ZPY□□□□(J-K)★★-◆◆-A14	ZPT4-B8	ZPB3(J-K)★★

Note 1) Applicable buffer stroke (★★): 10, 20, 30, 50 mm  
 Note 2) Vacuum entry (◆◆): N6, U6

- ZA
- ZX
- ZR
- ZM
- ZMA
- ZQ
- ZH
- ZU
- ZL
- ZY□
- ZF□
- ZP□
- SP
- ZCUK
- AMJ
- AMV
- AEP
- HEP

Related Equipment