

Made to Order Specifications: Solid State Switch With Pre-wired Connector



1 With Pre-wired Connector

- Eliminates the harnessing work by cable with connector specifications
- Adopts global standardized connector (IEC947-5-2)
- IP67 construction



How to Order

D

M9P

S

D

PC

Solid state switch

PNP Output type

Electrical Entry

Nil

In-Line

V

Perpendicular

Cable length

S

0.5 m

M

1.0 m

L

3.0 m

Connector model

D

M12—4 pin

Connector Specifications	
Connector model	M12-4 pin
Pin arrangement	
Conformed standard	JIS C 4524, JIS C 4525, IEC 947-5-2, NECA 0402
Impact resistance	300 m/s²
Enclosure	IP-67 (IEC529 standard)
Insulation resistance	100 MΩ or more at 500 M VDC
Withstand voltage	1500 VAC 1 minute (between contacts), Leak current 1 mA or less

Mounting Bracket Part Numbers				
For D-M9 □ Auto Switches				
Switch Mounting Method	Series	Bore Size (mm)	Adaptor Piece Part No.	Switch Mounting Bracket Part No.
Band Mounting	CD85	10	BJ3-1	BJ2-010
		16		BJ2-016
		20		BM2-020
		25		BM2-025
	CDG1	20		BMA2-020
		25		BMA2-025
		32		BMA2-032
		40		BMA2-040
		50		BMA2-050
		63		BMA2-063
Rail Mounting	CDQ2	12-25	BQ2-012	BQ-1
		32-50		BQ-2
Groove Mounting	MGP	12-100	BMG2-012	—
	MY1	16-63		—
	RSH	20-32		—
	RS1H	50-80		—
Tie-Rod Mounting	CDNS	125	—	BS5-125
		140		BS5-125
		160		BS5-160
	C95SD	32, 40	—	BMB5-032
		50, 63		BA7-040
		80, 100		BA7-063
Rail Mounting	CDR1	30	BQ2-012	BQ-1
		50-100		BQ-2

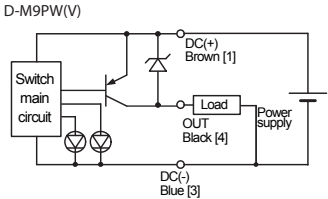
With Pre-wired Connector



Connector Pin Arrangement

Sensor type	Color distinction of lead wire				Meaning of contact number			
	1 pin	2 pin	3 pin	4 pin	1 pin	2 pin	3 pin	4 pin
DC 3-wire type	Brown	—	Blue	Black	DC (+)	—	DC (-)	OUT

M12—4 pin

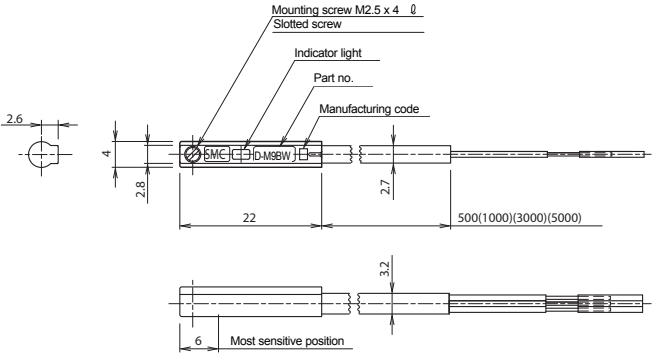


Connector Specifications

Connector model	M12-4 pin
Pin arrangement	
Conformed standard	JIS C 4524, JIS C 4525, IEC 947-5-2, NECA 0402
Impact resistance	300 m/s ²
Enclosure	IP-67 (IEC529 standard)
Insulation resistance	100 MΩ or more at 500 M VDC
Withstand voltage	1500 VAC 1 minute (between contacts), Leak current 1 mA or less

Dimensions

D-M9NW/ D-M9PW / D-M9BW



Connector model	
M12—4 pin	

D-M9NWV / D-M9PWV/ D-M9BWV

