



Automation • Controls • Process



Suitable for Air, Water, Oil and Chemicals



**JSB ANGLE
SEAT VALVES**



**JSX DIRECT OPERATED
2-WAY VALVES**



**JSXD DIRECT
OPERATED 2-WAY
VALVES**



**LFE ELECTROMAGNETIC
LIQUID FLOW
SWITCH**



**PA POLUPROPYLENE
PROCESS PUMP**



**JSXD PILOT OPERATED
2-WAY VALVES**

**LVP
Vinyl Chloride
2-way Valves**



**LVA
Fluoropolymer
2-way Valves**



**LVA
Chemical
2-way Valves**



Compatible with aggressive chemicals: ammonium hydroxide, hydrochloric acid, hydrogen peroxide, nitric acid, phosphoric acid, sodium hydroxide, sulfuric acid, etc.

Consult SMC for concentration levels

Automation Components for Pressing/Folding/Finishing/Stacking

CQ2
Compact Cylinder
300°F (150°C)



NCM
Round Body
Cylinder
300°F (150°C)



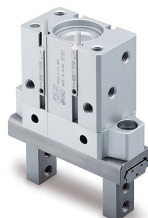
MGP
Guided Cylinder
300°F (150°C)



CY3B
Rodless Cylinder
300°F (150°C)



MHZ
2-Finger Gripper
212°F (100°C)



SY
Directional
Control Solenoid
Valves



U.S. & Canadian Sales Offices

WEST

Austin
Dallas
Denver
El Paso
Los Angeles
Phoenix
Portland
San Jose

CENTRAL

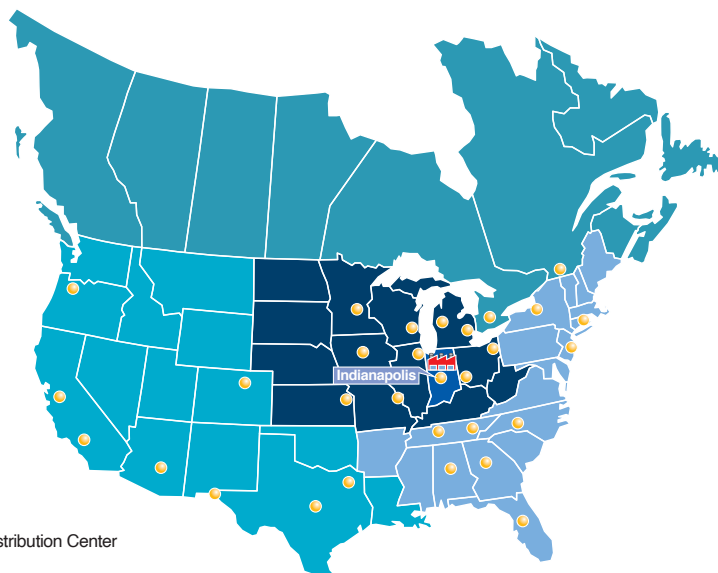
Chicago
Cincinnati
Cleveland
Detroit
Des Moines
Grand Rapids
Indianapolis
Kansas City
Milwaukee
Minneapolis
St. Louis

EAST

Atlanta
Birmingham
Boston
Charlotte
Knoxville
Nashville
New Jersey
Rochester
Tampa

CANADA

Montreal
Toronto



 Sales Offices

 Production/Distribution Center

SMC Corporation of America
10100 SMC Blvd., Noblesville, IN 46060
www.smcusa.com

SMC Automation (Canada) Ltd.
www.smcautomation.ca

(800) SMC.SMC1 (762-7621)
e-mail: sales@smcusa.com
International inquiries: www.smcworld.com