

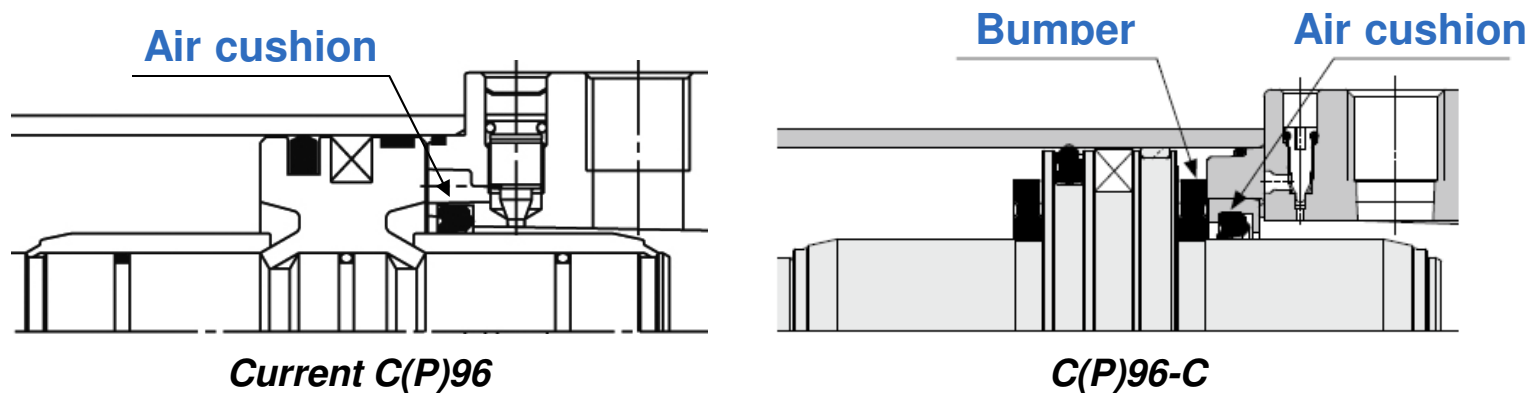


Series CP96/C96-C
ISO 1552 Cylinders

Improved features and related benefits

FEATURE: Double cushioning with an integrated function of the air cushion and the bumper. Reduced impact at the stroke end thanks to the bumper

CUSTOMER BENEFIT: Reduced cycle time as a result of a shortened cushioning time besides reduced noise as there is no metal-metal impact



FEATURE: Weight reduction of up to 17% in the C96-C and up to 15% in the CP96-C by reducing the material in the cover, the thickness of the piston and the sectional area of the square cylinder tube.

CUSTOMER BENEFIT: Lightweight machines.

Technical details

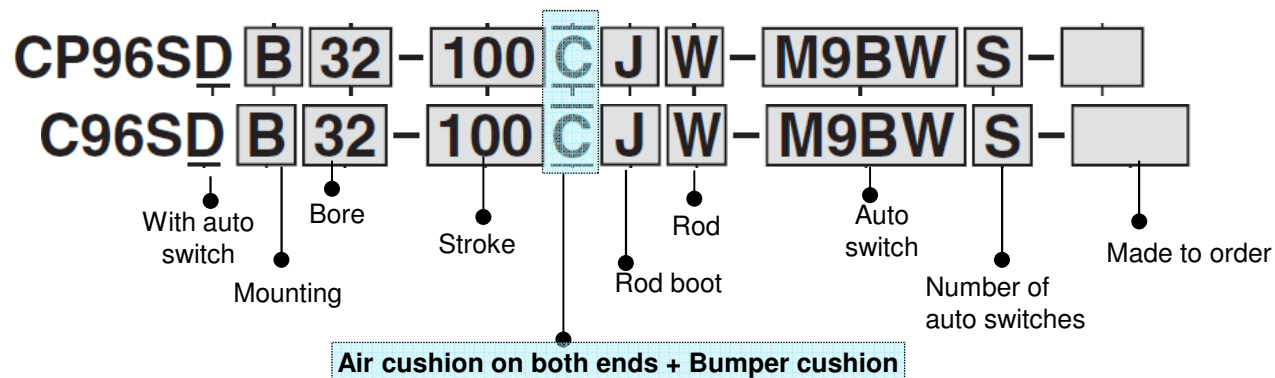
Differences between C(P)96 and C(P)96-C

- **Weight changes** due to a reduction of the material in the cover, the thickness of the piston and the sectional area of the square cylinder tube.

Bore [mm]	Basic Weight [kg]	
	C96	C96-C
32	0.53	0.43
40	0.83	0.64
50	1.33	1.09
63	1.74	1.42
80	2.77	2.32
100	3.69	3.15

Bore [mm]	Basic Weight [kg]	
	CP96	CP96-C
32	0.55	0.46
40	0.84	0.66
50	1.36	1.14
63	1.77	1.48
80	2.84	2.42
100	3.77	3.25

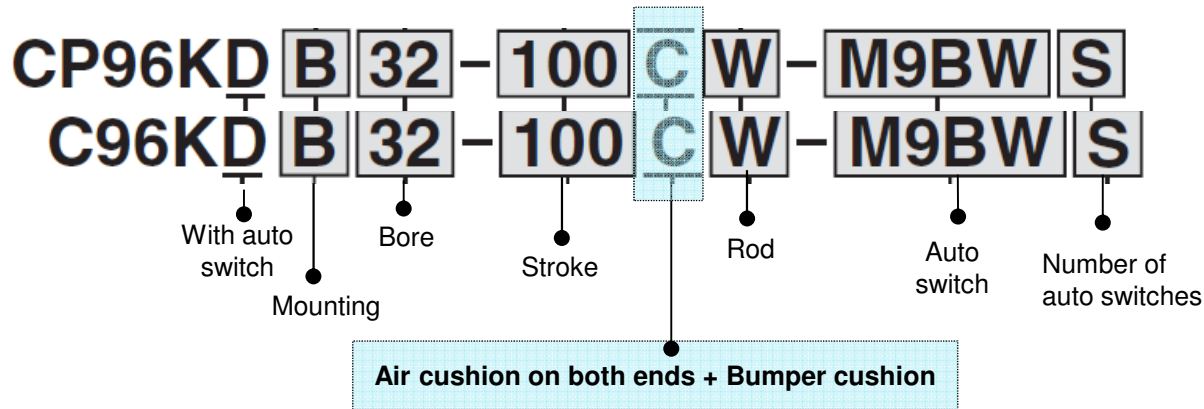
- **How to order Standard type**



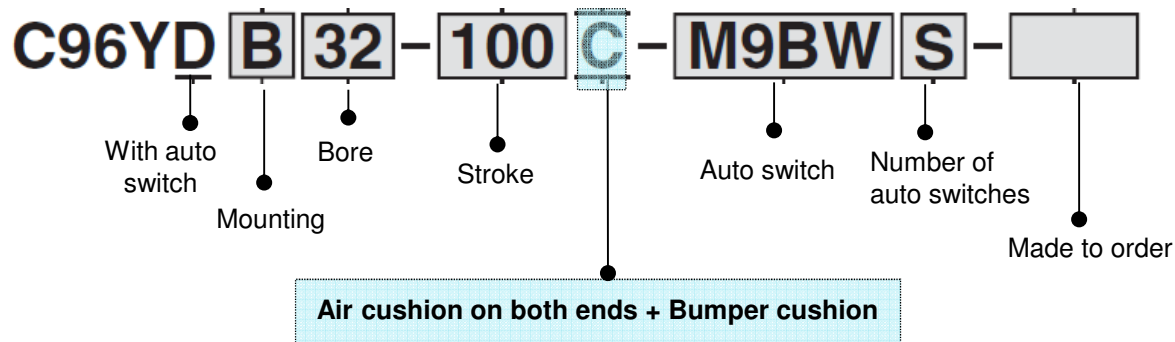
Technical details

C Differences between C(P)96 and C(P)96-C

▪ How to order Non-rotating rod type



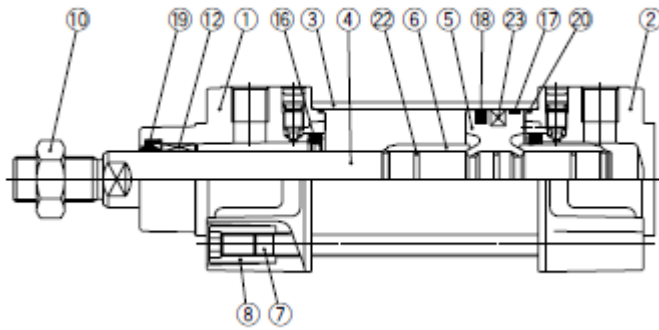
▪ How to order Smooth cylinder



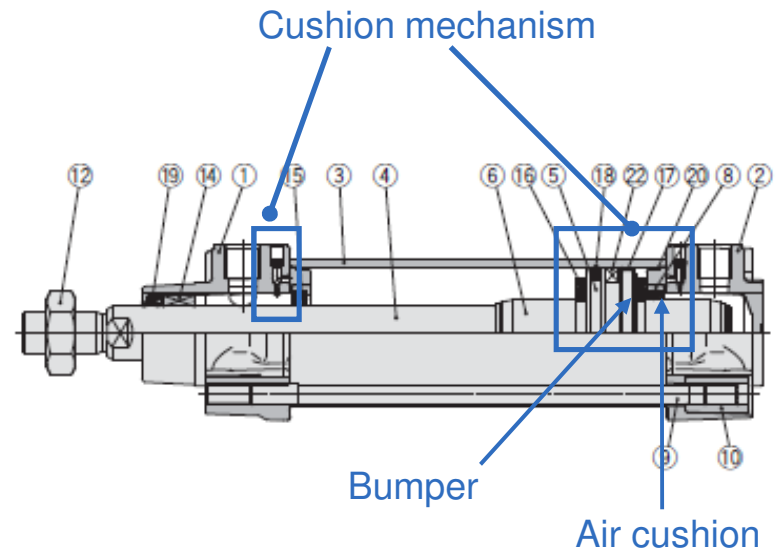
Technical details

- Construction changes

■ Main differences between C96 and C96-C



C96

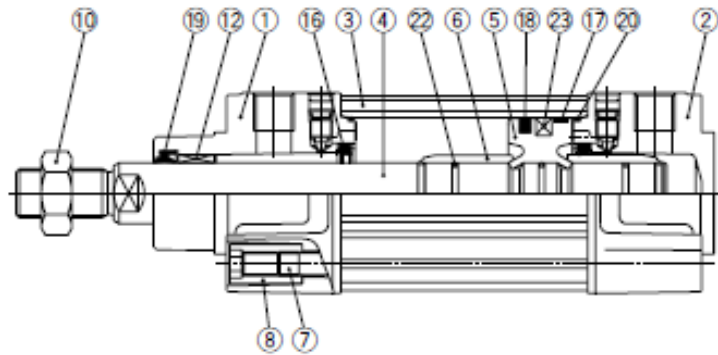


C96-C

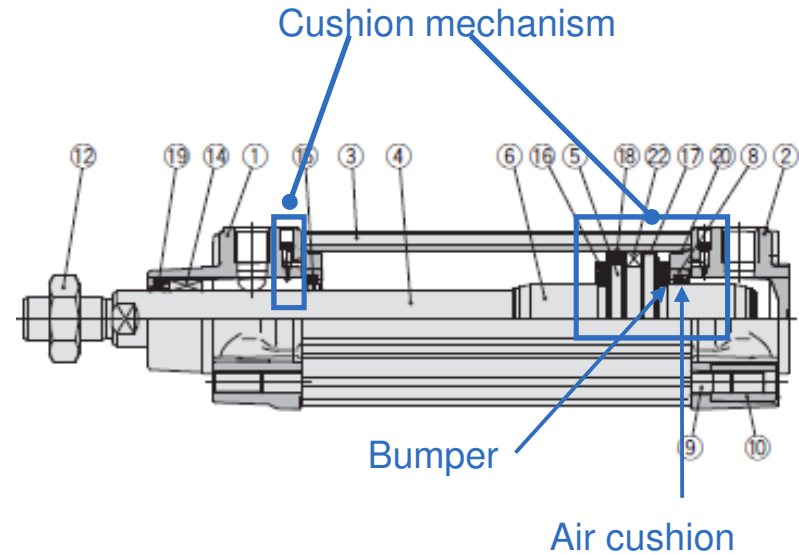
Technical details

- Construction changes

Main differences between CP96 and CP96-C



CP96



C(P)96-C

Technical details

▪ Made-to-order options

Differences between C(P)96 and C(P)96-C

Made to Order Option	Standard type C96-C		Smooth cylinder C96Y-C	Standard type CP96-C	
	Single rod	Double rod	Single rod	Single rod	Double rod
XA	•	•	•	•	•
XC14	•	•	•	-	-
XB6	•	•	-	•	•
XB7	•	•	-	-	-
XC4	•	•	-	•	•
XC7	•	•	•	•	•
XC10	•	-	•	•	-
XC11	•	-	-	•	-
XC22	•	•	-	•	•
XC35	•	•	-	•	•
XC65	•	•	•	•	•
XC68	•	•	•	•	•
XC88	•	•	-	•	•
XC89	•	•	-	•	•