



New CKQG-Z Pin Clamp Cylinder

Improved features and related benefits

FEATURE: The new CQ2-Z has been incorporated as the new base cylinder thus improving auto-switch mounting.

Added the **D-P3DWA** type compact auto-switch

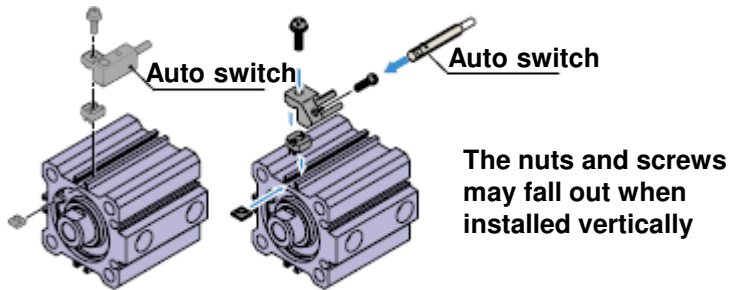
CUSTOMER BENEFIT: Increased the mounting possibilities



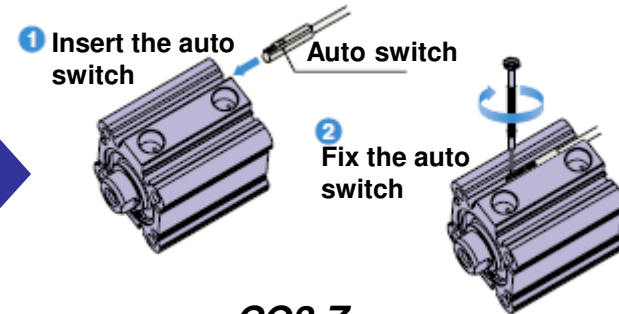
Old C(L)KQG



C(L)KQG-Z



Old CQ2



CQ2-Z

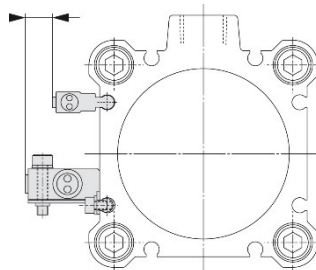
Improved features and related benefits



- **FEATURE:** Possibility to mount on 4 surfaces, 2 auto-switch on the same surface
- **CUSTOMER BENEFITS:** Increased flexibility of system design

- **FEATURE:** Reduction of the auto-switch protrusion
- **CUSTOMER BENEFIT:** Space saving for the designed machines

Shortened by 5 mm



Technical details

■ Weight changes

Differences between C(L)KQG and C(L)KQG-Z

[kg]

Pin Diameter	Weight	CKQGD		CKQGD-Z		CKQGD		CLKQGD-Z	
		low	high	low	high	low	high	low	high
	Ø12.5-13.0	1.66	1.83	1.62	1.79	2.18	2.34	2.14	2.3
Ø14.5-15.0	1.66	1.83	1.62	1.80	2.18	2.34	2.14	2.3	
Ø15.5-16.0	1.67	1.83	1.63	1.81	2.18	2.35	2.14	2.31	
Ø17.5-18.0	1.71	1.88	1.67	1.84	2.22	2.4	2.18	2.36	
Ø19.5-20.0	1.72	1.89	1.68	1.85	2.23	2.41	2.19	2.37	
Ø24.5-25.0	1.78	1.98	1.74	1.94	2.29	2.5	2.25	2.46	
Ø29.5-30.0	1.82	2.02	1.78	1.98	2.33	2.54	2.29	2.5	

[kg]

Pin Diameter	Weight	CKQGU		CKQGU-Z		CKQGU		CLKQGU-Z	
		low	high	low	high	low	high	low	high
	Ø12.5-13.0	1.67	1.84	1.63	1.8	2.19	2.36	2.15	2.32
Ø14.5-15.0	1.67	1.84	1.63	1.8	2.19	2.36	2.15	2.32	
Ø15.5-16.0	1.68	1.85	1.64	1.81	2.19	2.36	2.15	2.32	
Ø17.5-18.0	1.72	1.9	1.68	1.86	2.24	2.41	2.2	2.37	
Ø19.5-20.0	1.73	1.91	1.69	1.87	2.24	2.42	2.2	2.38	
Ø24.5-25.0	1.79	2	1.75	1.96	2.3	2.51	2.26	2.47	
Ø29.5-30.0	1.83	2.04	1.79	2	2.35	2.55	2.31	2.51	

Technical details

Weight changes

 Differences between C(L)KQG and C(L)KQG-Z

[kg]

Pin Diameter	Weight	CKQGK		CKQGK-Z		CKQGK		CLKQGK-Z	
		low	high	low	high	low	high	low	high
	Ø12.5-13.0	1.67	1.84	1.63	1.8	2.19	2.35	2.15	2.32
Ø14.5-15.0	1.67	1.84	1.63	1.8	2.19	2.35	2.15	2.32	
Ø15.5-16.0	1.68	1.84	1.64	1.81	2.19	2.36	2.15	2.32	
Ø17.5-18.0	1.72	1.89	1.68	1.86	2.23	2.41	2.2	2.37	
Ø19.5-20.0	1.73	1.9	1.69	1.87	2.24	2.42	2.2	2.37	
Ø24.5-25.0	1.79	1.99	1.75	1.96	2.3	2.51	2.26	2.38	
Ø29.5-30.0	1.83	2.03	1.79	2	2.34	2.55	2.31	2.51	

[kg]

Pin Diameter	Weight	CKQGM		CKQGM-Z		CLKQGM		CLKQGM-Z	
		low	high	low	high	low	high	low	high
	Ø12.5-13.0	1.67	1.84	1.63	1.8	2.18	2.35	2.14	2.31
Ø14.5-15.0	1.67	1.84	1.63	1.8	2.18	2.35	2.14	2.31	
Ø15.5-16.0	1.67	1.84	1.63	1.8	2.19	2.36	2.15	2.32	
Ø17.5-18.0	1.72	1.89	1.68	1.85	2.23	2.41	2.19	2.37	
Ø19.5-20.0	1.72	1.9	1.68	1.86	2.24	2.42	2.2	2.38	
Ø24.5-25.0	1.78	1.99	1.74	1.95	2.3	2.51	2.26	2.47	
Ø29.5-30.0	1.83	2.03	1.79	1.99	2.34	2.55	2.3	2.51	

Dimensional changes

The general dimensions of the product are the same as the current one.
It can be replaced.