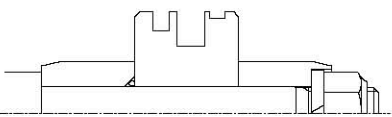
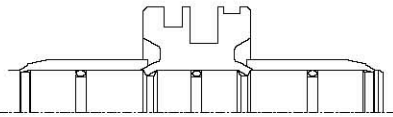
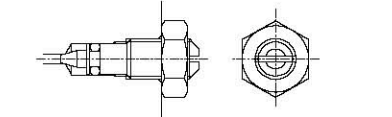
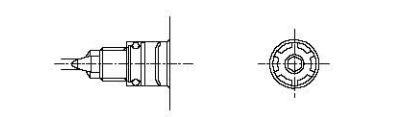
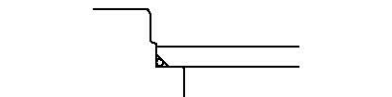
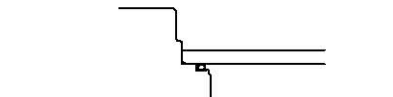
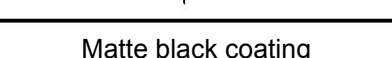
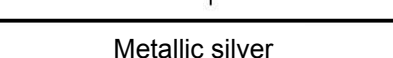
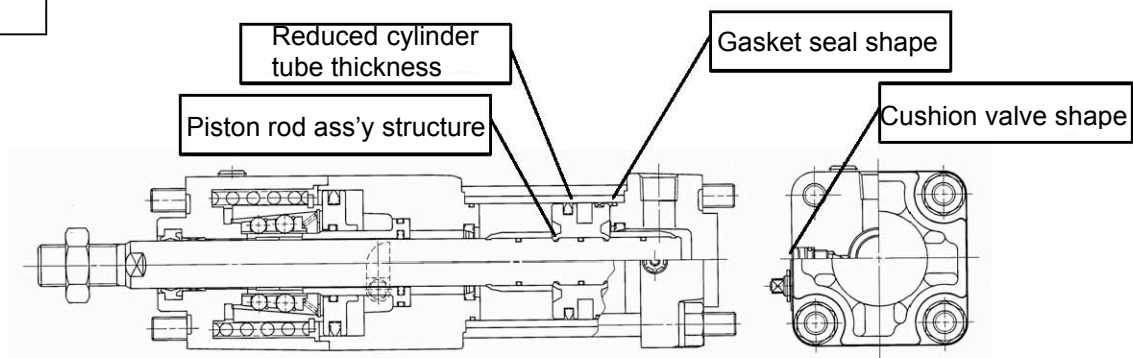


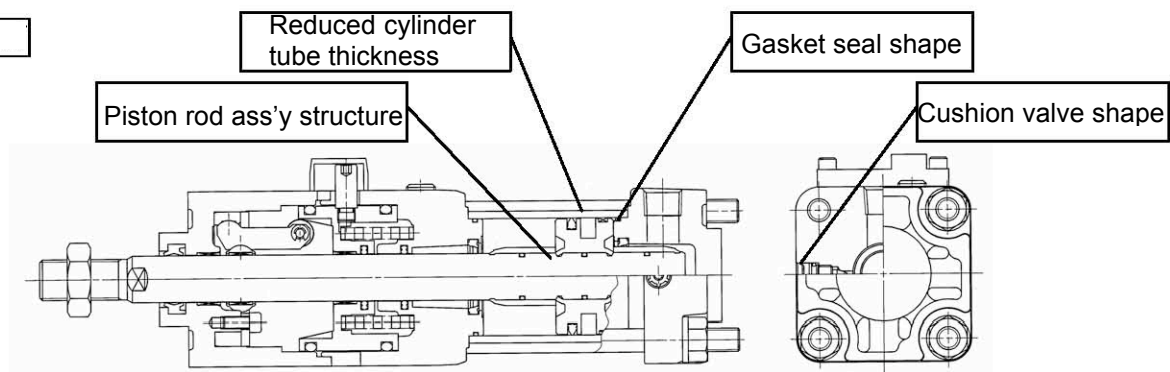
Description

		(GNA/GLA)	(GNA2/GLA2)
1	Connecting structure for piston rod ass'y		
2	Configuration of cushion valve		
3	Thinned cylinder tube	$\phi 40$: 3.5mm / $\phi 50$: 4mm / $\phi 63$: 4.5mm $\phi 80$: 4.5mm / $\phi 100$: 5mm	$\phi 40$: 2.5mm / $\phi 50$: 2.5mm / $\phi 63$: 2.5mm $\phi 80$: 3mm / $\phi 100$: 3.5mm
	Configuration of cylinder tube gasket		
	Configuration of Chamfered cylinder tube		
4	Color	Matte black coating	Metallic silver

CNA2



CLA2



Color

CNA2

CNA

