

Air Cylinder

IB CQ2



New CQ2



						1	2
C(D)Q2	A B	12	Stroke	D	F C M		A7*
		16					
		20					
		25					
		32					
		40					
		50					
		63					
		80					
		100					
C(D)Q2	A B	12	Stroke	D	F C M	Z	M9*
		16					
		20					
		25					
		32					
		40					
		50					
		63					
		80					
		100					

1 Symbol

IB CQ2	New CQ2
	Z

2 Auto Switch

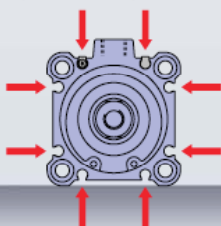
IB CQ2	New CQ2
Rail mounting: A7*	Direct mounting: M9*

Auto switch mounting rail removed.

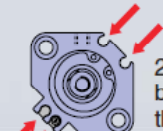
A round slot for mounting small auto switches is provided on 4 surfaces.

NEW

ø32 to ø100



Mountable on 2 surfaces for ø12 to ø25.

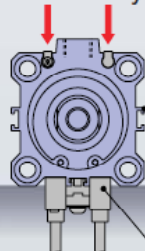


2 switches can be mounted on the same surface.

(One slot for each surface for ø12)

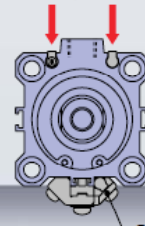
Existing model

Only one surface for ø32 to ø50.

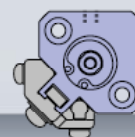
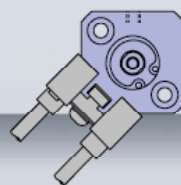


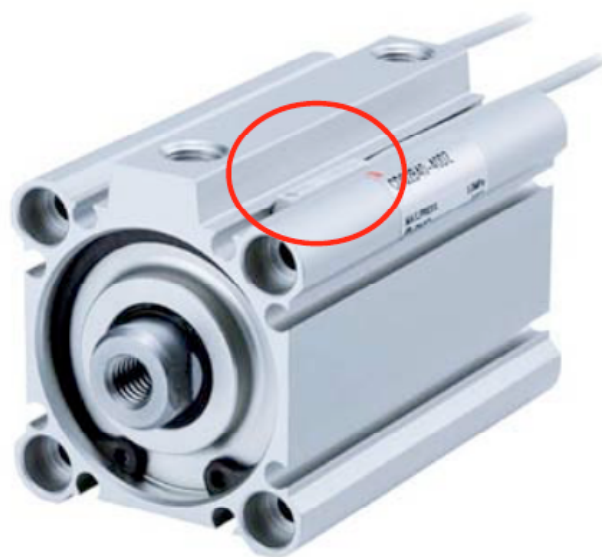
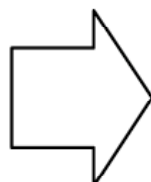
Auto switch rail

Rail mounting type auto switch



Small auto switch





Applicable auto switch	D-F7□/F7□V/J79/J79C/F7□W/J79W/F7□WV D-F7BAL/F7BAVL/F79F/F7NTL D-A7□/A80/A7□H/A80H/A73C/A80C/A79W	
Bore size (mm)	ø12 to ø25	ø32 to ø100
Auto switch mounting bracket part no.	BQ4-012	BQ5-032
Auto switch mounting bracket fitting parts lineup/Mass	① Auto switch mounting screw (M2.5 x 8L) ② Auto switch mounting nut Mass: 1.5 g	① Auto switch fixing screw (M2.5 x 10L) ② Auto switch mounting screw (M3 x 8L) ③ Auto switch spacer ④ Auto switch mounting nut Mass: 3.5 g
	When requesting the enclosure of the auto switch mounting bracket with the cylinder for shipment, add "-BQ" to the end of the cylinder part number. Standard model no. + BQ Example: CDQ2B-30DZ- BQ	
Auto switch mounting surface	Auto switch mounting rail side only	A/B/C side except port side
	ø12 	Port side
	ø16 to ø25 	

■ The auto switch can be replaced with the foot mounted.

NEW

Existing model

