



SWITCHOVER DOCUMENT

PF2MC7 Series
3-Colour, 3-Screen Display
Digital Flow Switch

Feature:

- 3-colour/3-screen display

Customer Benefit:

- More information at a glance
- Flexibility for showing required values



Feature:

- Switchable analogue output (1-5 V or 0-10 V) and switch output (NPN or PNP) for the whole series (only available for IO-Link compatible version in the previous version)

Customer Benefit:

- Reduces the number of stocked items and references
- Flexibility for the customer if machine/installation needs to be redesigned





Feature:

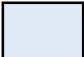
- Response time (Digital filter) can be selected up to 5.0 s for the whole series (the previous version only offered 5.0 s with IO-Link version)

Customer Benefit:

- High productivity and optimum reaction, selecting the required response time depending on the application

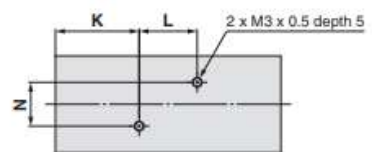
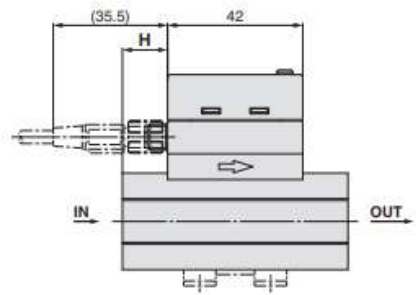
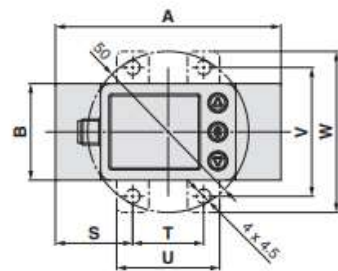
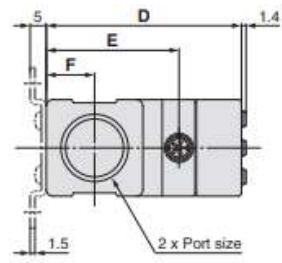
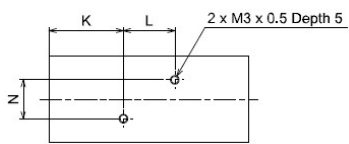
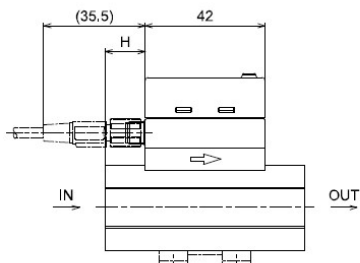
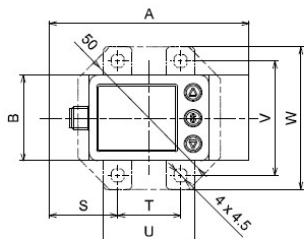
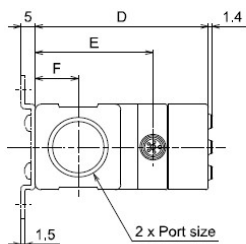
Standard specifications

Series		Current PFMC	New PF2MC7
Picture			
Applicable fluid		Air, N2 (Air quality: ISO8573-1 1.1.2 to 1.6.2)	
Rated flow range		5 to 2000 l/min	
Rated pressure range		0 to 0.8 MPa	
Accumulated flow range		0 to 999,999,990 L	
Response time		Select from 0.05 s, 0.1 s, 0.5 s, 1 s, or 2 s	
Display accuracy		± 3% F.S.	
Output	Switch output	NPN/PNP open collector and IO-Link	NPN/PNP open collector (switchable) and IO-Link
	Analogue output	Voltage (1 to 5 V), analogue (4 to 20 mA)	Voltage output: 1 to 5 VDC, 0 to 10 VDC (only when the power supply voltage is 24 VDC) Current output: 4 to 20 mA
Display		3-colour display // 2-screen display	3-colour display // 3-screen display
Current consumption		55 mA or less	
Power supply voltage		12 to 24 VDC (± 10%) – Switch 18 to 30 VDC (± 10%) – IO-Link	
Operating temperature range		0° to 50°C	
Enclosure		IP65	
Weight		160 to 245 (without lead wire/brackets)	

 Difference in specifications

Dimensions

General dimensions



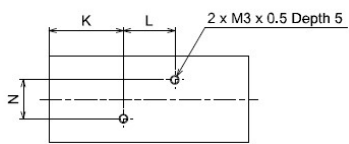
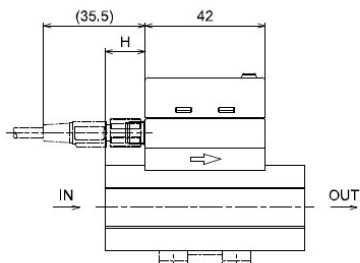
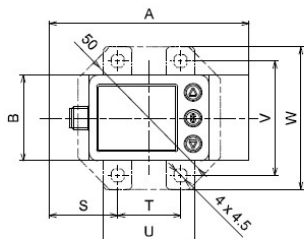
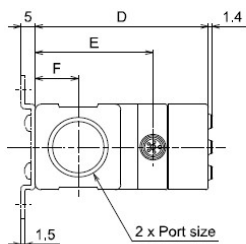
Current PFMC

New PF2MC7

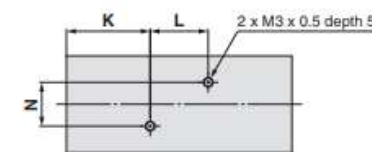
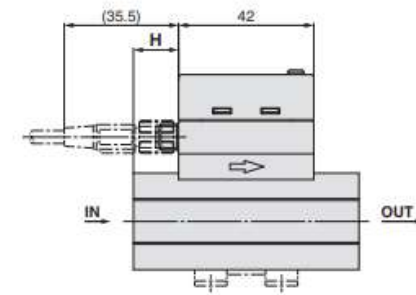
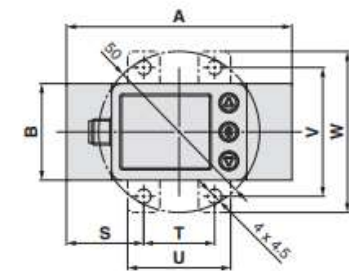
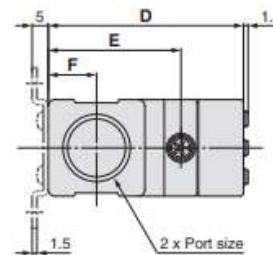
Port size	A [mm]		B [mm]		D [mm]		E [mm]		F [mm]		H [mm]		K [mm]		L [mm]		M [mm]	
	Current	New	Current	New	Current	New	Current	New	Current	New	Current	New	Current	New	Current	New	Current	New
Rc1/2, NPT1/2	70	70	30	30	60.6	60,6	41.2	41.2	15	15	14	14	26	26	18	18	13.6	13.6
Rc3/4, NPT3/4, G3/4	90	90	35	35	66.1	66.1	46.7	46.7	17.5	17.5	24	24	31	31	28	28	16.8	16.8
G1/2	76	76	30	30	60.6	60.6	41.2	41.2	15	15	14	14	29	29	18	18	13.6	13.6

Dimensions

General dimensions



Current PFMC



New PF2MC7

Model	Bracket dimensions									
	S [mm]		T [mm]		U [mm]		V [mm]		W [mm]	
	Current	New	Current	New	Current	New	Current	New	Current	New
PFMC7501/7102(-L)	24	27	22	22	32	32	40	40	50	50
PFMC7202(-L)	30	30	30	30	42	42	48	48	58	58

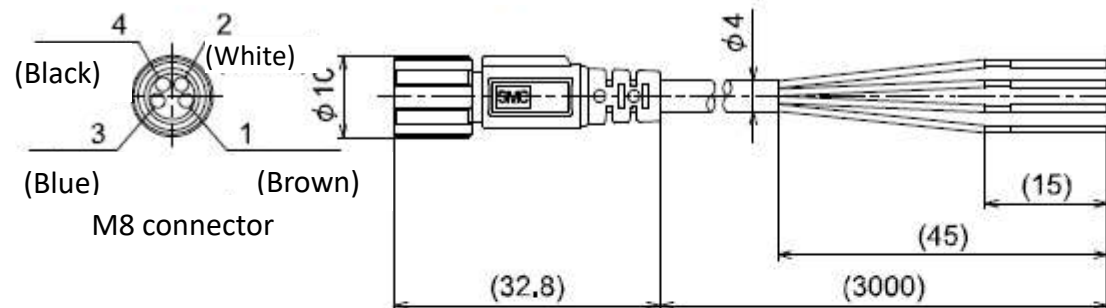
Difference in specifications

Accessories

Brackets, panel mounts and lead wires

	Current PFMC	New PF2MC7
Lead wire with M8 connector	ZS-40-A	ZS-40-A
Bracket	ZS-42-A	ZS-42-A
Bracket	ZS-42-B	ZS-42-B
M12-M8 conversion lead wire	ZS-40-M12M8-A	ZS-40-M12M8-A

Lead wire with M8 connector (ZS-40-A)



M12-M8 conversion lead wire (ZS-40-M12M8-A)

