



SWITCHOVER DOCUMENT

CK1-Z1 Series
Clamp cylinder

Improved features and related benefits

Feature

- Weight reduction. Typically, 7% lower compared to the previous model. The product weight has been reduced by a redesign of the body, head cover shape and magnetic coupling.

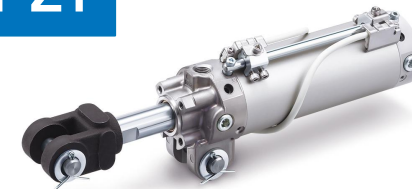
Customer Benefit

- CK1-Z1 contributes to a reduced overall mass of machinery.

CK1-Z



CK1-Z1





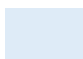
Standard Specifications

All performance specifications are the same as the previous model (CK1-Z).

Appearance

Construction has been updated to include a head cover rather than tube cover:

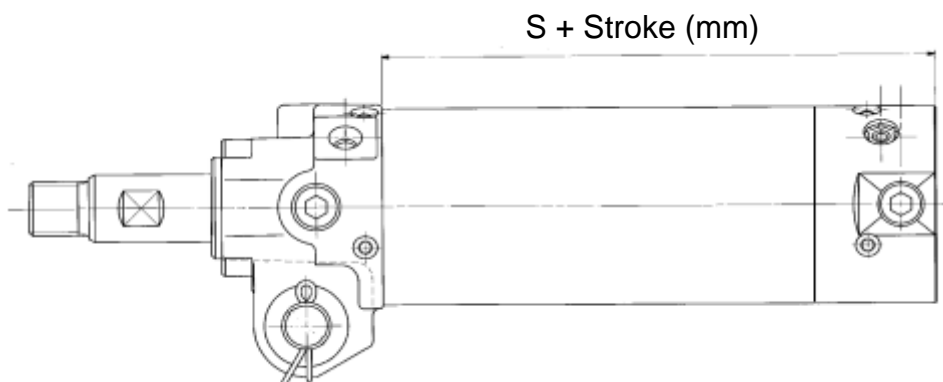
Discontinued product (CK1-Z)	New product (CK1-Z1)
Tube cover (without head cover)	With head cover
	

 Difference in specifications

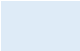
Product Dimensions

Due to the inclusion of the head cover, for CKP1 (built in strong magnet option only) sizes $\varnothing 50$ and $\varnothing 63$, the overall length of CKP1-Z1 has increased by 2 mm. There is no change in overall length for CKP1-Z1 size $\varnothing 40$.

All CK1-Z1 series mounting dimensions are the same as those of the existing equivalent CK1-Z series model.

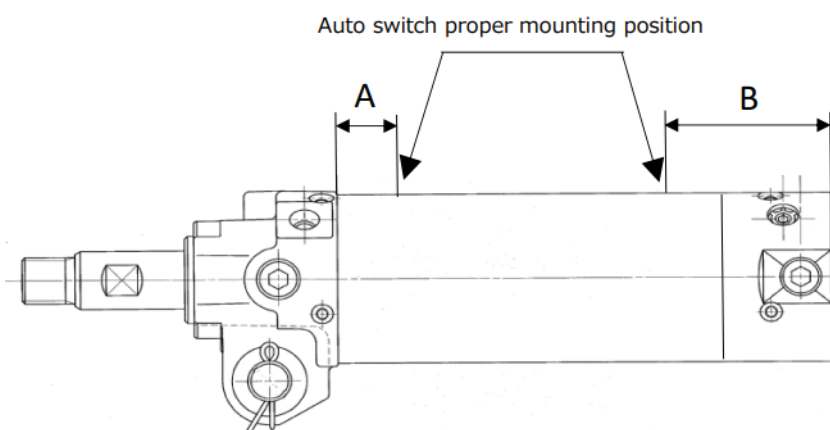


Symbol	Series	$\varnothing 50$	$\varnothing 63$
S (mm)	CKP1-Z	56	
	CKP1-Z1		58

 Difference in specifications

Rod Type Auto Switch Mounting Dimensions

The specified mounting position for rod type auto switches used with CK1-Z1 has changed.

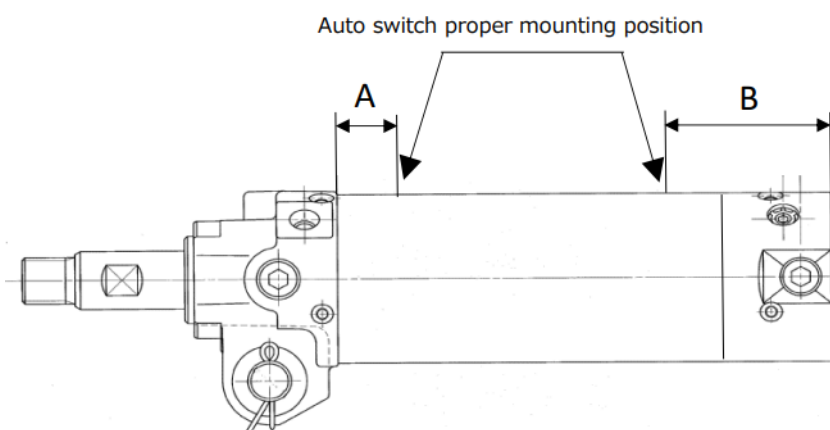


Series	Auto switch	Symbol	Auto switch mounting position (mm)		
			ø40	ø50	ø63
CK1-Z	D-P3DWA□	A	8.5	6	6
		B	23.5	29	29
	D-P4DW□	A	6	3.5	3.5
		B	21	26.5	26.5
	D-P79WSE D-P74□	A	3	0.5	0.5
		B	18	23.5	23.5
	D-M9□ D-M9□W D-M9□A	A	13	10.5	10.5
		B	28	33.5	33.5
	D-A9□	A	9	6.5	6.5
		B	24	29.5	29.5
CK1-Z1	D-P3DWA□	A	6.5	8	8
		B	25.5	27	27
	D-P4DW□	A	4	5.5	5.5
		B	23	24.5	24.5
	D-P79WSE D-P74□	A	0	0	0
		B	26	27	27
	D-M9□ D-M9□W D-M9□A	A	11	12.5	12.5
		B	30	31.5	31.5
	D-A9□	A	7	8.5	8.5
		B	26	27.5	27.5

Difference in specifications

Band Type Auto Switch Mounting Dimensions

The specified mounting position for band type auto switches used with CK1-Z1 has changed. Unlike CK1-Z series, auto switch type D-B54 is not specified for use with CK1-Z1, if a customer enquiries, please check with your local technical support.



Series	Auto switch	Symbol	Auto switch mounting position (mm)		
			ø40	ø50	ø63
CK1-Z	D-P4DW□	A	6	3.5	3.5
		B	21	26.5	26.5
	D-M9□ D-M9□W D-M9□A	A	13	10.5	10.5
		B	28	33.5	33.5
	D-A9□	A	9	6.5	6.5
		B	24	29.5	29.5
	D-B54	A	3.5	1	1
		B	18.5	24	24
CK1-Z1	D-P4DW□	A	4	5.5	5.5
		B	23	24.5	24.5
	D-M9□ D-M9□W D-M9□A	A	11	12.5	12.5
		B	30	31.5	31.5
	D-A9□	A	7	8.5	8.5
		B	26	27.5	27.5

 Difference in specifications

Replacement parts

There is no change to seal kits (any existing seal kit part numbers for CK1-Z are applicable to CK1-Z1).

Mounting brackets

There is no change to mounting or rod end brackets (any existing brackets for CK1-Z are applicable to CK1-Z1).

Special Products Situation

New special products will be based on the CK1-Z1. More common special products have already been made available:

Special specification (X number reference)	CK1-Z part number	CK1-Z1 part number	Interchangeability
X1515 : With air cushion on both ends	CK*1**-*Z-X1515	CK*1**-*Z1-X1515	Compatible
XC88 : Spatter resistant coil scraper, Lube retainer, Grease for welding (Rod parts: Stainless steel 304)	CK*1**-*Z-XC88	CK*1**-*Z1-XC88	Compatible
XC89 : Spatter resistant coil scraper, Lube retainer, Grease for welding (Rod parts: S45C)	CK*1**-*Z-XC89	CK*1**-*Z1-XC89	Compatible
XC91 : Spatter resistant coil scraper, Grease for welding (Rod parts: S45C)	CK*1**-*Z-XC91	CK*1**-*Z1-XC91	Compatible

If a customer requests to re-order a non-standard (special) CK1-Z series product, please check if it has already been made available using CK1-Z1. If there is no availability, please issue a special-order request based on CK1-Z1.