

SWITCHOVER DOCUMENT

VBA-X3145 Series
Energy Saving, Exhaust-Recovery
Booster Regulator

Improved features and related benefits

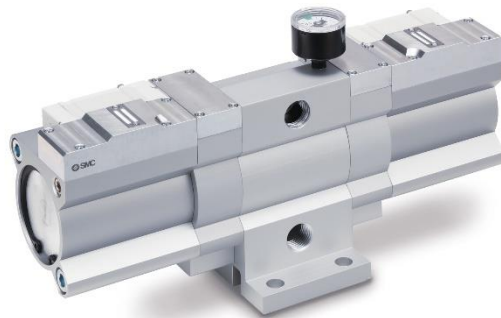
Feature

- Series update

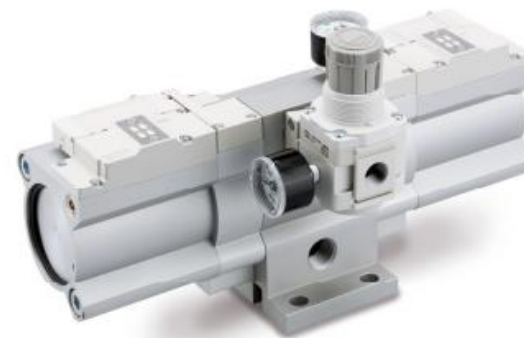
Customer Benefit

- Standardised series
- Optional regulator and auto switch can be mounted

Discontinued series

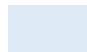


New series

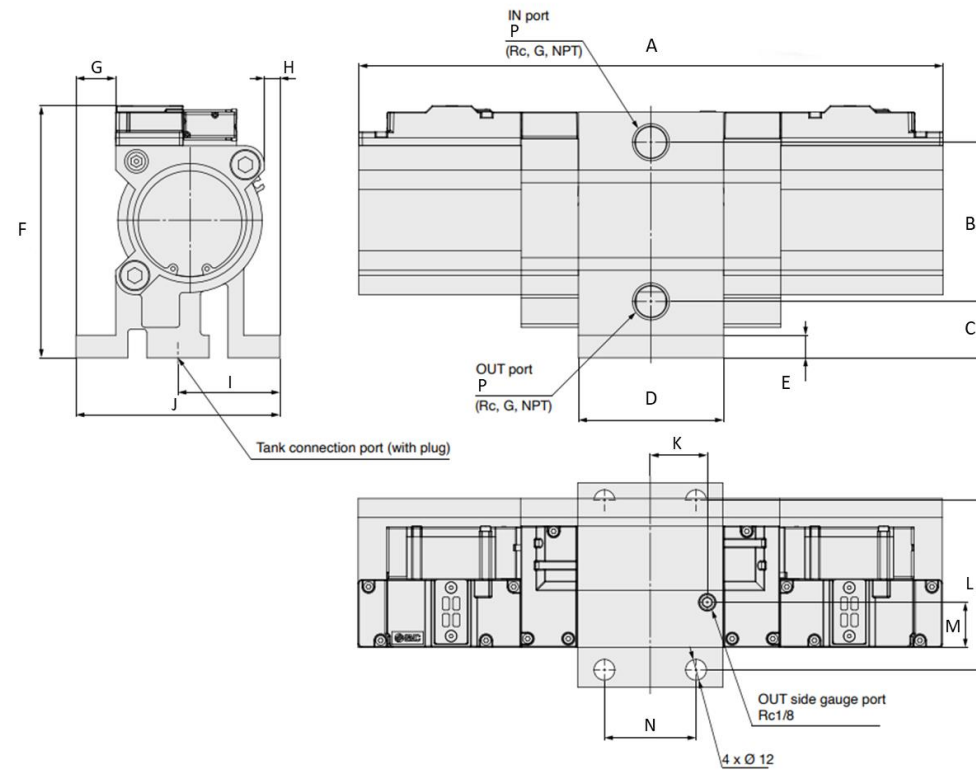


Standard Specification

Model		VBA-X3145	VBAE
Air recycling		Yes	Yes
Regulator option		No	Yes
Air consumption* *Based on amount of outlet air = 1	Inlet	1.72	1.72
	Outlet	1	1
	Exhaust	0.72	0.72
Pressure increase ratio	Size 10	1.7	1.7
	Size 20	1.7	1.7
Mounting position		Any	Any
Max flow rate [l/min (ANR)] Inlet pressure: 0.6 MPa Outlet pressure: 1 MPa	Size 10	230	230
	Size 20	1000	1000
Port size		1/4, 1/2	1/4, 1/2
Set pressure [MPa]		0.3 to 1.2	0.3 to 1.2
Pressure adjustment mechanism		Fixed	Fixed
Built-in silencer		Yes	Yes
Weight [kg]	Size 10	1.2	1.2
	Size 20	5.1	5.0
Filling time [s]	Size 10	41	41
	Size 20	11	11

 Difference in specifications

Dimensions



	B		C		F		N		L	
	VBA-X3145	VBAE	VBA-X3145	VBAE	VBA-X3145	VBAE	VBA-X3145	VBAE	VBA-X3145	VBAE
Size 10	49	49	20	20	84	87.5	40	40	60	60
Size 20	92	92	32.5	32.5	145.5	145.5	53	53	98	98

Difference in specifications